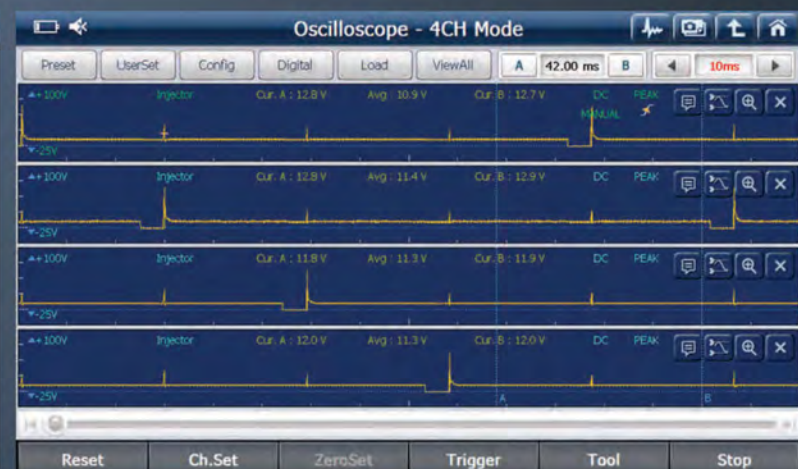
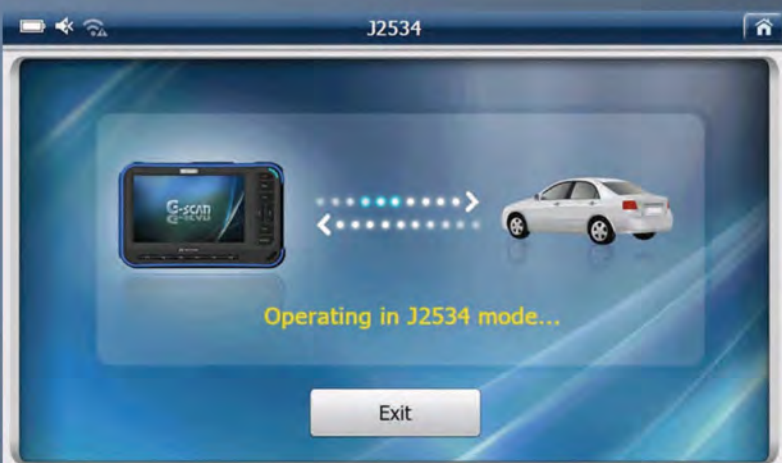


GScan1 / GScan2 Software Release Highlights September 2017



CAS
Connected Automotive Systems

North American Master Distributor
CAS : 1-877-263-4897
www.OEMTools.com



G-scan & G-scan2 Distributor Bulletin

2017 September Update Details

Sep 05, 2017

TOYOTA/LEXUS.....	2	LANCIA.....	43
NISSAN/INFINITI.....	3	PEUGEOT.....	45
HONDA /ACURA.....	6	CITROEN.....	45
MITSUBISHI.....	7	VOLVO.....	66
MAZDA.....	7	EUROPE TRUCKS BETA.....	67
SUZUKI/MARUTI.....	7	FORD USA.....	67
DAIHATSU.....	8	FORD USA (LINCOLN).....	68
SUBARU.....	8	FORD USA (MERCURY).....	69
ISUZU.....	9	GM USA.....	69
SSANGYONG.....	9	CHRYSLER/JEEP/DODGE.....	72
HINO.....	10	PERODUA.....	73
UD.....	10	OPEL / GM BRAZIL.....	73
ASIAN TRUCK/BUS.....	10	MAHINDRA.....	74
AUDI/VW/SEAT/SKODA.....	12	SAIPA.....	75
FORD EU.....	13	TATA.....	76
RENAULT / DACIA.....	14	H O L D E N.....	76
BMW.....	15	PROTON.....	77
MINI.....	19	ETC.....	77
LAND ROVER.....	20		
JAGUAR.....	33		
MERCEDES BENZ.....	36		
FIAT.....	39		
ALFA ROMEO.....	41		

Click on any car line above to jump to that page. Click on [Back to Index] to return back to this page.....



G-scan & G-scan2 Distributor Bulletin

2017 September Update Details

Sep 05, 2017

TOYOTA/LEXUS

TCCS (Engine/AT) System

- Basic Function enhanced
DTC analysis
- Special Function added
Evaporative System Check

Old Type TCCS (Engine/AT) System

- Basic Function added
Freeze Frame Data

New Type TCCS (Engine/AT) System

- Basic Function added
Freeze Frame Data

Electric Parking Brake System

- Special Function added
Check Mode

Transmission (ECT/SMT/MMT)

- Special Function stabilized
A/T Code Reset

Stop and Go System

- Special Function added
Check Mode
Integrated Current Value Initialization

SRS Airbag System

- Special Function added
Check Mode

Hybrid Control System

- Basic Function bug fixed
Data analysis
- Special Function added
Check Mode

Electric Power Steering System

- Special Function added
Check Mode

ARS (Active Rear Steer) System

- Special Function added
Check Mode

New Type Hybrid Vehicle System

- Basic Function added
Freeze Frame Data

New Type Hybrid Vehicle Battery System

- Basic Function added

Freeze Frame Data

New Type Radar Cruise Control (HV) System

- Basic Function added
Freeze Frame Data

Radar Cruise Control (HV) System

- Basic Function added
Freeze Frame Data

New Type Motor Generator System

- Basic Function added
Freeze Frame Data

Air Conditioner System

- Basic Function bug fixed
DTC analysis

Front Recognition Camera System

- Basic Function added
Freeze Frame Data

Pre-crash 2 System

- Basic Function added
Freeze Frame Data

Blind Spot Monitor System

- Basic Function added
Freeze Frame Data

Head Up Display System

- Basic Function added
Freeze Frame Data

Clearance Sonar System

- Basic Function added
Freeze Frame Data

ITS Connect System

- Basic Function added
Freeze Frame Data

Lane Departure Alert System

- Basic Function added
Freeze Frame Data

EV (Electric Vehicle) System

- Basic Function added
Freeze Frame Data

ARS (Active Rear Steer) System

- Basic Function added
Freeze Frame Data

Hybrid Vehicle Battery System



G-scan & G-scan2 Distributor Bulletin

2017 September Update Details

Sep 05, 2017

- Basic Function added
Freeze Frame Data

TVD (Torque Vectoring Differential) System

- Basic Function added
Freeze Frame Data

4WD (4 Wheel Drive) System

- Basic Function added
Freeze Frame Data

VGRS (Variable Gear Ratio Steering) System

- Basic Function added
Freeze Frame Data

Air Suspension/TEMS/AHC System

- Basic Function added
Freeze Frame Data

Plug-in Control (HV) System

- Basic Function added
Freeze Frame Data

Active Sound Control System

- Basic Function added
Freeze Frame Data

Central Gateway System

- Basic Function added
Freeze Frame Data

Driver/Passenger Seat System

- Basic Function added
Freeze Frame Data

Electric Parking Brake System

- Basic Function added
Freeze Frame Data

Left/Right Seat Mirror System

- Basic Function added
Freeze Frame Data

Lane Departure Alert System

- Basic Function added
Freeze Frame Data

Panoramic View Monitor System

- Basic Function added
Freeze Frame Data

Tilt and Telescopic System

- Basic Function added
Freeze Frame Data

TCCS2 System

- Basic Function added
Freeze Frame Data
Data analysis
Actuation Test
- Special Function added
Check Mode

Old Type TCCS System

- Basic Function enhanced
Data analysis
Actuation Test

Combination meter System

- Basic Function enhanced
Actuation Test

[Back to Index](#)



Convertible Roof New System added (CAN)

- Basic Function
Data analysis
Data Analysis
Actuation Test
ECU Information Display
 - Special Function
Trunk Opener
Flipper Door
Roof Latch
Roof State Reset
Roof State Learning
- Corresponding vehicle: 370Z

Air Pressure Monitor Special Function added (CAN)

- Special Function
Switching TPMS Between On and Off
- Corresponding Vehicle: CIMA HYBRID

HV BATTERY New Type added (CAN)

- Basic Function
Data analysis
Data Analysis
ECU Information Display
- Corresponding vehicle: LEAF

METER A/C Special Function added (CAN)

- Special Function
Fuel meter diagnosis (analog pointer)
Warning lamp diagnosis
- Corresponding vehicle: INFINITI G35

EV/HEV New Type added (CAN)



G-scan & G-scan2 Distributor Bulletin

2017 September Update Details

Sep 05, 2017

- Basic Function
 - Data analysis
 - Data Analysis
 - Actuation Test
 - ECU Information Display

- Special Function
 - G-Sensor Calibration
 - Clutch 1 Zero Position Learning
 - CL1 Brake-In Function
- Corresponding vehicle: X-TRAIL

Motor Control New Type added (CAN)

- Basic Function
 - Data analysis
 - Data Analysis
 - ECU Information Display

- Special Function
 - Resolver Offset
- Corresponding vehicle: X-TRAIL

HV BATTERY New Type added (CAN)

- Basic Function
 - Data analysis
 - Data Analysis
 - Actuation Test
 - ECU Information Display

Corresponding vehicle: X-TRAIL

ABS New Type added (CAN)

- Basic Function
 - Data analysis
 - Data Analysis
 - Actuation Test
 - ECU Information Display
- Special Function
 - Steering Angle Sensor Adjustment
 - Deceleration G Sensor Calibration

Corresponding vehicle: SERENA

Airbag New Type added (CAN)

- Basic Function
 - Data analysis
 - Data Analysis
 - ECU Information Display

Corresponding vehicle: SERENA

3ch CAN GATEWAY New System added (CAN)

- Basic Function
 - Data analysis
 - ECU Information Display

Corresponding vehicle: SERENA

Auto Slide Door New Type added (CAN)

- Basic Function
 - Data analysis

- Data Analysis
 - Actuation Test
 - ECU Information Display
 - Special Function
 - Hands Free Sensor Parts Number
- Corresponding vehicle: SERENA

Auto Slide Door Right New Type added (CAN)

- Basic Function
 - Data analysis
 - Data Analysis
 - Actuation Test
 - ECU Information Display
 - Special Function
 - Hands Free Sensor Parts Number
- Corresponding vehicle: SERENA

BCM New Type added (CAN)

- Basic Function
 - Data analysis
 - Data Analysis
 - Actuation Test
 - ECU Information Display
- Special Function
 - Reset Setting Value
 - Reset Setting Value
 - Auto ACC Function (Audio/Navi Set after IGN Off)
 - Unlock Set
 - Auto Unlock Type
 - Auto Lock Function
 - Auto Unlock Function
 - Signature Light Setting
 - Autofold Function
 - Set R-DEF Timer
 - Set I/L D-Unlock Intcon
 - Fog Lamp Override
 - Auto Lock Set
 - Answer Back
 - Answerback Keyless Lock Unlock
 - Welcome Light OP Set
 - Custom A/Light Setting
 - Ill Delay Set
 - Twilight ON
 - Wiper Link
 - Daytime Running Light Setting
 - Wiper Speed Setting
 - Rain Sensor
 - FR RR Drip
 - Rear Wiper Link With Reverse Setting
 - 3-Time Flasher Setting
 - Inside Ant Diagnosis
 - Lock/Unlock By I-Key
 - Engine Start By I-Key
 - Trunk/Glass Hatch Open
 - Auto Lock Set

Short Cranking Output
IGN/ACC Battery Saver
Answer Back
Answer Back I-Key Lock Unlock
Answerback I-Key Lock Unlock
Answerback Keyless Lock Unlock
Welcome Light OP Set
Intelligent Key Link Set
Remote Engine Starter
Touch Sensor Unlock Function Setting
Confirm Dongle ID
Confirm TCU ID
Siren Set
Security Alarm Set
Corresponding vehicle: SERENA

EHS/PKB New Type added (CAN)

- Basic Function
Data analysis
Data Analysis
ECU Information Display
- Special Function
Actuator 0 Point Learning
Parking Brake In (Drag On)
Corresponding vehicle: SERENA

EPS New Type added (CAN)

- Basic Function
Data analysis
Data Analysis
ECU Information Display
Corresponding vehicle: SERENA

HVAC New Type added (CAN)

- Basic Function
Data analysis
Data Analysis
Actuation Test
ECU Information Display
- Special Function
REC Memory Set
FRE Memory Set
Blow Set
Target Evaporator Temp Upper Limit Setting
Stop/Start System Operation Condition Setting
Air Inlet Change Setting
Air Flow Reduction Setting
Corresponding vehicle: SERENA

ICC/ADAS2 New System added (CAN)

- Basic Function
Data analysis
Data Analysis
Actuation Test
ECU Information Display

- Special Function
Cause of Auto-Cancel 2
Corresponding vehicle: SERENA

IPDM New Type added (CAN)

- Basic Function
Data analysis
Data Analysis
Actuation Test
ECU Information Display
- Special Function
Cumulative Sub-Battery Discharge Current Clear
Corresponding vehicle: SERENA

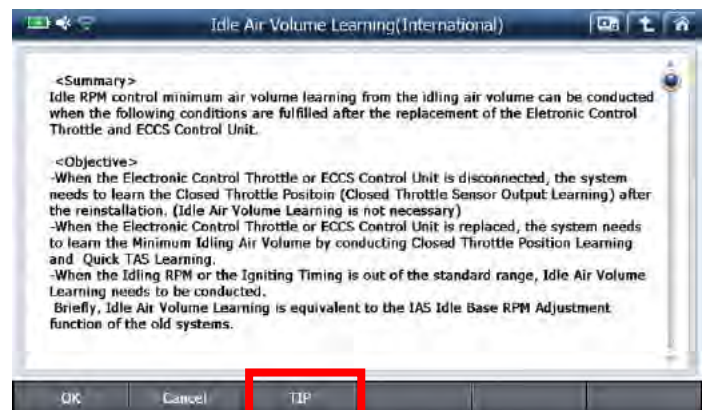
Lane Camera New Type added (CAN)

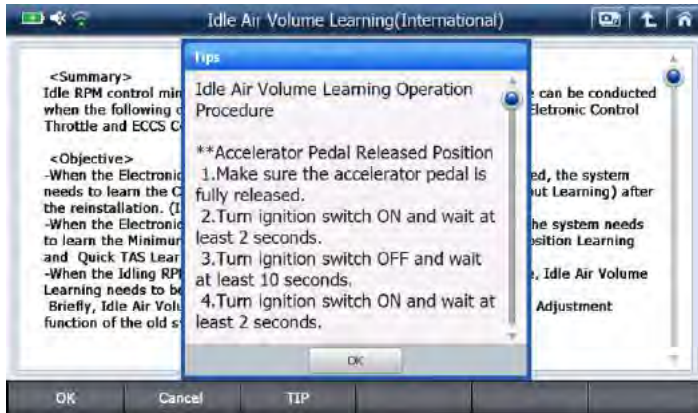
- Basic Function
Data analysis
Data Analysis
ECU Information Display
Corresponding vehicle: SERENA

METER New Type added (CAN)

- Basic Function
Data analysis
Data Analysis
ECU Information Display
Corresponding vehicle: SERENA

Feedback
Engine Idle air volume function (Tip added)





Engine DTC Bug fixed
SERENA (2017) – Field tested in Japan
X-trail HV – Field tested in Japan

[Back to Index](#)

HONDA /ACURA

NEW System Added

BCM_Blind Spot Information

- Basic Function
- DTC analysis
- Data analysis
- Actuation Test

BCM_Multi View Camera System

- Basic Function
- DTC analysis
- Data analysis
- Actuation Test

BCM_Rear Camera Cross Traffic Monitor

- Basic Function
- DTC analysis
- Data analysis
- Actuation Test

NEW TYPE Added

IMA: INS

- Basic Function
- DTC analysis
- Data analysis
- ECU Info

NEW FUNCTION Added

Engine: USA

- Advanced Function
- EVAP Test

EPB: INS

- Advanced Function

Sensor Calibration
Brake Pad Maintenance Mode

Function Improved

Engine (Diesel): Poland

- Basic Function
- DTC analysis extended

Engine: Singapore

- Basic Function
- Data analysis extended

Engine:

- Basic Function
- Data analysis extended

EPB:

- Basic Function
- Data analysis extended

EPS: INS

- Basic Function
- Data analysis extended

SRS: USA

- Basic Function
- DTC analysis extended

VSA: UK

- Basic Function
- Data analysis extended

BCM_Gauge: USA, India

- Basic Function
- DTC analysis extended

BCM_Lighting: USA, India

- Basic Function
- DTC analysis extended

BCM_Doorlocks: USA, India

- Basic Function
- DTC analysis extended

BCM_Wiper : USA, India

- Basic Function
- DTC analysis extended

BCM_Keyless: USA, India

- Basic Function
- DTC analysis extended

BCM_Security: USA, India

- Basic Function
- DTC analysis extended

BCM_HVAC: USA, India

- Basic Function
- DTC analysis extended

Bug Fixed

IMA: INS

- Basic Function
- Data analysis

Engine: INS

- Basic Function
- Data analysis

Engine: Singapore

- Basic Function
 - Data analysis
- TPMS: USA**
- Advanced Function
 - Warning Indicator

[Back to Index](#)

MITSUBISHI

Pajero iO (Feedback from Ecuador)

MPI / GDI / DIESEL

- DTC E583 added

eK-space (B11A, 2016) (Feedback from Japan)

ABS / ASC / ASTC / WSS added

- Basic Function
 - DTC analysis
 - Data analysis
 - Actuation test
 - ECU Information
- Special Function
 - Emission Gas Mode
 - Sensor Calibration

ETACS

- Special Function
 - VIN writing

Entering JDM vehicle's VIN available now

GALANT (Feedback from USA)

TPMS added

- Basic Function
 - DTC analysis
 - Data analysis
 - Actuation test
 - ECU Information
- Special Function
 - Tire Pressure Sensor ID Check

Pajero sport (Feedback from USA)

ETACS

- Special Function
 - Option coding bug fixed

[Back to Index](#)

MAZDA

BT-50(RANGER) 2.3 Gasoline System Added

- RAP (Remote Anti-Theft/Personality Module)

SUZUKI/MARUTI

NEW TYPE Added

Hustler 2016: Japan

EPI

- Basic Function
 - DTC analysis
 - Data analysis
 - Actuation Test
 - ECU Info

ABS

- Basic Function
 - DTC analysis
 - Data analysis
 - ECU Info
- Advanced Function
 - Hydraulic Control Test
 - Sensor Calibration
 - ESP Setting

BCM

- Basic Function
 - DTC analysis
 - Data analysis
 - ECU Info
- Advanced Function
 - Door Mirror Setting
 - Keyless Start System Function
 - Remote Controller Battery Warning
 - Security Alarm Setting
 - Answer-Back Setting (Buzzer Sounding Outside Vehicle)
 - Answer-Back Setting
 - Remote Controller Area Warning

MOCO (MR_Wagon) 2016: Japan

EPI

- Basic Function
 - DTC analysis
 - Data analysis
 - Actuation Test
 - ECU Info

Hustler: Korea

ABS

- Basic Function
 - DTC analysis
 - Data analysis
 - ECU Info
- Advanced Function
 - Hydraulic Control Test
 - Sensor Calibration
 - ESP Setting

Vitara 2016: Korea

ABS

- Basic Function
 - DTC analysis
 - Data analysis
 - ECU Info
- Advanced Function
 - Hydraulic Control Test
 - Sensor Calibration
 - ESP Setting

Swift: Indonesia

EPI

- Basic Function
 - DTC analysis
 - Data analysis
 - Actuation Test
 - ECU Info

Swift: Chile

EPI

- Basic Function
 - DTC analysis
 - Data analysis
 - Actuation Test
 - ECU Info

AT/CVT: Pakistan

- Basic Function
 - DTC analysis
 - Data analysis
 - ECU Info
- Advanced Function
 - CVT G Sensor Calibration
 - Learning Value Initialization

NEW TYPE Added

IMMO: India, Dubai

- Advanced Function
 - Immobilizer

Function Improved

SRS

- Basic Function
 - Data analysis extended

Bug Fixed

EPI:

- Basic Function
 - Data analysis

EPI: India

- Basic Function
 - DTC analysis

EPI: Malaysia (Proton Ertiga)

- Basic Function
 - Actuation

BCM:

- Basic Function
 - Data analysis

IMMO: India

- Advanced Function
 - Immobilizer Change (Register SK Code)
 - ECM Change (Register SKC/PWD)
 - ECU Reset
 - Reset Immobilizer

[Back to Index](#)

DAIHATSU

ABS System

- Communication Stabilized

Feedback: MIRA COCOA, 2011

SUBARU

New system added

AC (Air condition system)

- Basic function
 - DTC Analysis
 - Data Analysis
 - ECU Information Display

BSD-L (Blind spot detection left side)

- Basic function
 - DTC Analysis
 - ECU Information Display

BSD-R (Blind spot detection right side)

- Basic function
 - DTC Analysis
 - ECU Information Display

Infotainment

- Basic function
 - DTC Analysis
 - ECU Information Display

Keyless

- Basic function
 - DTC Analysis
 - Data Analysis

- Actuation Test
- ECU Information Display
- Support function
 - Keyless Access with Push Button Start Check
 - Collation result history Clear

New functions added
AT (Auto Transmission)

- Support function
 - Clear AT learning value

Bug fixed

- ABS/VDC: Special function Stabilized
- PSS: Communication stabilized
- SRS: DTC items added
- Eyesite: Special function stabilized

[Back to Index](#)

ISUZU

New system added

F/G Series Truck: 6W*1 – TC (GEN Thailand Spec)

- Basic function
 - DTC Analysis
 - Data Analysis
 - ECU Information Display

F/G Series Smoother

- Basic function
 - DTC Analysis
 - Data Analysis
 - Actuation Test
 - ECU Information Display
- Support function
 - Reset Learned Values (Beta)

F/G Series Smoother

- Basic function
 - DTC Analysis
 - Data Analysis
 - Actuation Test
 - ECU Information Display
- Support function
 - Clear Clutch Learned Data (Beta)
 - Clear Gear Position Learn (Beta)

F/G Series Wabco EBS (ESC with EBS)

- Basic function
 - DTC Analysis
 - Data Analysis
 - Actuation Test
 - ECU Information Display

New function added

Pick up: ABS

- Basic function
 - Data Analysis

Bug fixed

- Pick up – Immobilizer: communication stabilized
- Pick up – AT: DTC item added

[Back to Index](#)

SSANGYONG

REXTON

- New Function added
 - ECM – D20DTR
 - Advanced Function
 - ECU Replace
 - Engine Multi Calibration
 - Engine Variant Coding

- ECM – D22DTR
 - Advanced Function
 - ECU Replace
 - Engine Multi Calibration
 - Engine Variant Coding

RODIUS/STAVIC/TURISMO

- New Function added
 - ECM – D20DTR
 - Advanced Function
 - ECU Replace
 - Engine Multi Calibration
 - Engine Variant Coding

- ECM – D22DTR
 - Advanced Function
 - ECU Replace
 - Engine Multi Calibration
 - Engine Variant Coding
 - Lock-Up Operation Release

ACTYON/KORAND SUT

- New Function added
 - ECM – D20DTR
 - Advanced Function
 - ECU Replace
 - Engine Multi Calibration
 - Engine Variant Coding

- ECM – D22DTR
 - Advanced Function

ECU Replace
Engine Multi Calibration
Engine Variant Coding

KORANDO C

- New Function added
TCM –AISIN 6AT
Basic Function
Actuation Test

ECM – D20DTF
Advanced Function
Engine Variant Coding

ECM – D22DTF
Advanced Function
ECU Replace
Engine Multi Calibration
Engine Variant Coding

TIVOLI

- New Function added
ECM – G16DF
Advanced Function
ECU Replace

ECM – D16DTF
Advanced Function
ECU Replace
Engine Multi Calibration
Engine Variant Coding

TCM –AISIN 6AT
Basic Function
Actuation Test

[Back to Index](#)

HINO

PROFIA(K13C) New Type added

- Engine

Engine(P11C) New Type added

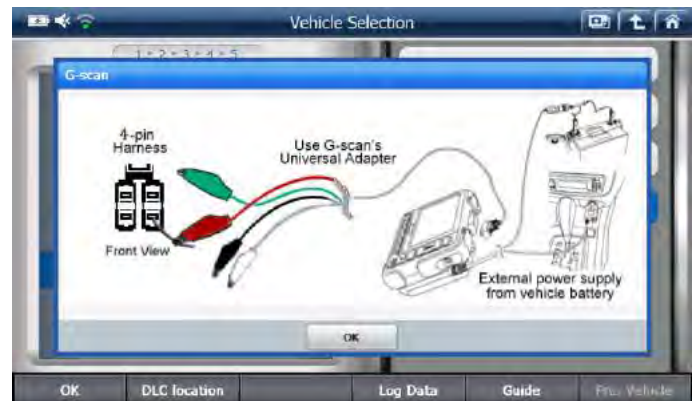
- Engine

[Back to Index](#)

UD

QUON(GE13) New Type added

-WABCO EBS



QUESTER(GH11)) New Type added

- Engine
- VMCU

[Back to Index](#)

ASIAN TRUCK/BUS

New system added

Engine

Diesel > EDC15
Basic function
DTC Analysis
Data Analysis
Actuation Test
ECU Information Display
Special Function
Service Date

Engine

Diesel > EDC16 > EDC 16 BS3
Basic function



G-scan & G-scan2 Distributor Bulletin

2017 September Update Details

Sep 05, 2017

DTC Analysis
Data Analysis
Actuation Test
ECU Information Display
Special Function
Air Heater
Cranking
Starting Torque
Torque Limit
Set Low Idle
PRV Reset
WIF Reset
Service Date
Programming Date

Engine

Diesel > EDC16 > EDC 16 BS4

Basic function
DTC Analysis
Data Analysis
Actuation Test
ECU Information Display
Special Function
Air Heater
Cranking
Starting Torque
Torque Limit
Set Low Idle
PRV Reset
WIF Reset
Service Date
Programming Date

Engine

Diesel > EDC17 > EDC17

Basic function
DTC Analysis
Data Analysis
Actuation Test
ECU Information Display
Special Function
Grid Heater Act
Starting Torque
Torque Limit
Set Idle
PRV Reset
Service Date
Programming Date
Injectors 4 Cyl
KM

Engine

Diesel > EDC17 > EDC 17 EGR

Basic function
DTC Analysis

Data Analysis
Actuation Test
ECU Information Display
Special Function
Grid Heater Act
Starting Torque
Torque Limit
Set Idle
PRV Reset
Service Date
Programming Date
Injectors 4 Cyl
KM

Engine

Diesel > EDC17 > EDC 17 SCR

Basic function
DTC Analysis
Data Analysis
Actuation Test
ECU Information Display
Special Function
Grid Heater Act
Starting Torque
Torque Limit
Set Idle
PRV Reset
Service Date
Programming Date
Injectors 4 Cyl
KM

Engine

Diesel > DELPHI > H3 K-line

Basic function
DTC Analysis
Data Analysis
Actuation Test
ECU Information Display
Special Function
Leak Detection

Engine

Diesel > DELPHI > H4 K-line

Basic function
DTC Analysis
Data Analysis
Actuation Test
ECU Information Display
Special Function
Leak Detection

Engine

Diesel > DELPHI > H4 CAN

Basic function



G-scan & G-scan2 Distributor Bulletin

2017 September Update Details

Sep 05, 2017

DTC Analysis
Data Analysis
Actuation Test
ECU Information Display
Special Function
Leak Detection

DTC Analysis
Data Analysis
Actuation Test
ECU Information Display
Special Function
Workshop Code
Access Date

Engine

CNG > OH6.0
Basic function
DTC Analysis
Data Analysis
Actuation Test
ECU Information Display

Vehicle

ABS > WABCO E4 Basic
Basic function
DTC Analysis
Data Analysis
Actuation Test
ECU Information Display

Engine

CNG > EGC 10
Basic function
DTC Analysis
Data Analysis
Actuation Test
ECU Information Display

Vehicle

Cummins
Basic function
DTC Analysis
Data Analysis
Actuation Test
ECU Information Display

Vehicle

ACU
Basic function
DTC Analysis
Data Analysis
Actuation Test
ECU Information Display

Vehicle

BCU-BUS > Front BCU
Basic function
DTC Analysis
Data Analysis
Actuation Test
ECU Information Display

Vehicle

BCU-Truck > Front BCU
Basic function
DTC Analysis
Data Analysis
Actuation Test
ECU Information Display

Vehicle

BCU-BUS > Rear BCU
Basic function
DTC Analysis
Data Analysis
Actuation Test
ECU Information Display

Vehicle

BCU-Truck > Rear BCU
Basic function
Actuation Test
ECU Information Display

Vehicle

BCU-BUS > Cluster
Basic function
Data Analysis
Actuation Test
ECU Information Display

Vehicle

BCU-Truck > Cluster
Basic function
Data Analysis
Actuation Test
ECU Information Display

[Back to Index](#)

AUDI/VW/SEAT/SKODA

CAN Gateway (CAN Type) New Type Added

- Basic Function
Data analysis

Vehicle

AMT
Basic function

Brake Electronics (CAN Type) New Type Added

- Basic Function
 - ECU information

Engine Electronics (CAN Type) New Type Added

- Basic Function
 - Data analysis
- Special function
 - Basic setting
 - Adaptation
 - Long Adaptation
 - Long Coding
 - Security Access

Transmission Electronics (CAN Type) New Type Added

- Basic Function
 - Data analysis
- Special function
 - Long Coding

Electronic Central Electronics (CAN Type) New Type Added

- Basic Function
 - Data analysis
- Special function
 - Adaptation
 - Long Coding

Central Module Convenience (CAN Type) New Type Added

- Special function
 - Long Adaptation

Engine Electronics (UDS Type) New Type Added

- Basic Function
 - DTC analysis
 - Data analysis
 - Actuation Test
- Special function
 - Basic setting
 - Adaptation
 - Security Access

Transmission Electronics (UDS Type) New Type Added

- Basic Function
 - Data analysis
 - Actuation Test
- Special function
 - Basic setting

Brake Electronics (UDS Type) New Type Added

- Basic Function
 - DTC analysis
 - Data analysis
 - Actuation Test
- Special function
 - Basic setting
 - Adaptation
 - Security Access

Auto HVAC (UDS Type) New Type Added

- Basic Function
 - Data analysis
 - Actuation Test
- Special function
 - Basic setting

Instrument cluster (UDS Type) New Type Added

- Basic Function
 - Data analysis
 - Actuation Test
- Special function
 - Basic setting
 - Adaptation
 - ESI Resetting

Instrument cluster (UDS Type) New Type Added

- Basic Function
 - Data analysis
 - Actuation Test
- Special function
 - Basic setting

Back-up Camera (UDS Type) New Type Added

- Basic Function
 - Data analysis
 - Actuation Test
- Special function
 - Basic setting

CAN Type All System

- Long coding Function improved
- Long Adaptation Function improved

Brake Electronics (TP KWP)

- Communication stabilized

[Back to Index](#)

FORD EU

Explorer 2.3L Eco Boost - Gas Turbocharged Direct Injection 2016 Vehicle Added

- PCM (Powertrain Control Module)

- ABS (Anti-Lock Brake System)
- ACM (Audio Control Module)
- APIM (Accessory Protocol Interface Module)
- ATCM (All Terrain Control Modules)
- BCM (Body Control Module)
- C-CM (Cruise Control Module)
- DACM-C (Digital Audio Control Module C)
- DDM (Driver's Door Module)
- DSM (Driver's Seat Module)
- DSP (Digital Signal Processing Module)
- FCDIM (Front Control/Display Interface Module)
- FCIM-B (Front Controls Interface Module B)
- GFM (Generic Function Module)
- GPSM (Global Positioning System Module)
- GWM (Gateway Module A)
- HCM (Headlamp Control Module)
- HSWM (Heated Steering Wheel Module)
- HUD (Head up Display)
- HVAC (Heating Ventilation Air Conditioning)
- IPC (Instrument Panel Control Module)
- IPM-A (Image Processing Module A)
- IPM-B (Image Processing Module B)
- OCSM (Occupant Classification System Module)
- PAM (Parking Aid Module)
- PDM (Passenger's Door Module)
- PSCM (Power Steering Control Module)
- RCM (Restraint Control Module)
- RGTM (Rear Gate/Trunk Module)
- RHVAC (Rear Heating Ventilation Air Conditioning)
- RTM (Radio Transceiver Module)
- SCCM (Steering Column Control Module)
- SCM-E (Seat Control Module E)
- SCM-G (Seat Control Module G)
- SCM-H (Seat Control Module H)
- SOD-L (Side Obstacle Detection Control Module Left)
- SOD-R (Side Obstacle Detection Control Module Right)

[Back to Index](#)

RENAULT / DACIA

New Model added

- ESPACE IV
- Injection
 - Basic Function
 - DTC analysis
 - Data analysis
 - Actuation test
 - ECU information
- Advanced Function
 - Read configuration
 - Unlock injector control
 - Lock injector control

- Programmed values
- Increment of idle speed
- Decrement idle speed
- Air path programming
- Programming reinitialisation
- Fuel supply prevention
- Stop fuel supply prevention

Engine adaptives

- Instrument panel
 - Basic Function
 - DTC analysis
 - Data analysis
 - Actuation test
 - ECU information
- Advanced Function
 - Read configuration
 - Oil service and odometer miles-km
- Automatic Gearbox
 - Basic Function
 - DTC analysis
 - Data analysis
 - Actuation test
 - ECU information
- Advanced Function
 - Write date of last after sales operation
 - Neutral position programming

A.B.S

- Basic Function
 - DTC analysis
 - Data analysis
 - Actuation test
 - ECU information
- Advanced Function
 - Check target teeth
 - Read configuration
 - Speed index
 - Write date of last after sales operation
 - Steering wheel angle sensor
 - Transverse acceleration sensor
 - Pressure sensor
 - Speed index
 - Prevention of stop lights illumination authorization
 - Auto stop lights illumination authorization
 - Chassis wear programming
 - Hydraulic brake compensation

UCH

- Basic Function
 - DTC analysis
 - Data analysis
 - Actuation test
 - ECU information

Advanced Function
 Read configuration
 Valve set selection
 Following tire change

Airbag / Pre tensioners

Basic Function
 DTC analysis
 Data analysis
 Actuation test
 ECU information

Advanced Function
 Read configuration
 Lock computer
 Unlock computer
 Write date of last after sales operation

Air conditioning

Basic Function
 DTC analysis
 Data analysis
 Actuation test
 ECU information

Advanced Function
 Read configuration

Parking brake

Basic Function
 DTC analysis
 Data analysis
 Actuation test
 ECU information

Advanced Function
 Read configuration
 Write configuration
 Slope initialization

Feed back

UAE: CLIO II – Injection sensor data bug fixed
 ISRAEL: Kangoo MUX – Injector coding Function added

[Back to Index](#)

BMW

System Search function greatly improved for G-scan2*. Searching speed now takes merely few seconds but may take little longer depending on supported systems. This applies to model year 2004 and after.

*G-scan1 is not applicable due to its hardware limitation

3 Series – E46 (1999 – 2005)

Transport mode

- Special Function added
 Transport mode

DME (Digital Engine Electronics)

- Special Function
 CO adjustment
 Fuel consumption display
 Idle speed adjustment

EGS (Electronic transmission management)

- Special Function
 Oil level check

GR (Cruise Control) added

- Basic Function
 DTC analysis
 Data analysis
 Actuation test
 ECU Information

M3 – E46 (1999 – 2005)

DSC (Dynamic stability control)

- Special Function
 Lateral acceleration sensor
 Pressure sensors
 Steering angle sensor
 Brake bleeding procedure
 Brake line mix-up test

5 Series – E39 (1995 – 2003)

Transport mode

- Special Function added
 Transport mode

DME (Digital Engine Electronics)

- Special Function
 CO adjustment
 Fuel consumption display
 Idle speed adjustment

EGS (Electronic transmission management)

- Special Function
 Oil level check

7 Series – E38 (1994 – 2001)

Transport mode

- Special Function added
 Transport mode

DME (Digital Engine Electronics)

- Special Function
 CO adjustment

Fuel consumption display
Idle speed adjustment

- Special Function added
Transport mode

EGS (Electronic transmission management)

- Special Function
Oil level check

1 Series – E81 / E82 / E87 / E88 (2004 - 2010)

Register Battery Replacement

- Special Function added
Evaluate state of battery charge

X3 – E83 (2004 – 2009)

Transport mode

- Special Function added
Transport mode

Evaluate closed-circuit current monitoring

- Special Function added
Evaluate closed-circuit current monitoring

DME (Digital Engine Electronics)

- Special Function
CO adjustment
Fuel consumption display
Idle speed adjustment

CAS (Car Access System)

- Special Function added
Reset starter lock
DME - CAS adjustment

EGS (Electronic transmission management)

- Special Function
Oil level check

DME (Digital Engine Electronics)

- Special Function
CO adjustment
Fuel consumption display
OBD readiness codes

X5 – E53 (2000 – 2006)

Transport mode

- Special Function added
Transport mode

IHKA (Automatic heating/air conditioning)

- Special Function
Newly address the air distribution flap motors

DME (Digital Engine Electronics)

- Special Function
CO adjustment
Fuel consumption display
Idle speed adjustment

3 Series – E90 / E91 / E92 / E93 (2006 - 2011)

Register Battery Replacement

- Special Function added
Evaluate state of battery charge

EGS (Electronic transmission management)

- Special Function
Oil level check

Evaluate closed-circuit current monitoring

- Special Function added
Evaluate closed-circuit current monitoring

Z4 – E85/E86 (2003 – 2008)

Transport mode

- Special Function added
Transport mode

CAS (Car Access System)

- Special Function added
Reset starter lock
DME - CAS adjustment

DME (Digital Engine Electronics)

- Special Function
CO adjustment
Fuel consumption display
Idle speed adjustment

DME (Digital Engine Electronics)

- Special Function
CO adjustment
Fuel consumption display
OBD readiness codes

EGS (Electronic transmission management)

- Special Function
Oil level check

IHKA (Automatic heating/air conditioning)

- Special Function
Newly address the air distribution flap motors

Z8 – E52 (2000 – 2003)

Transport mode

5 Series – E60 / E61 (2004 - 2009)

Register Battery Replacement

- Special Function added
Evaluate state of battery charge

- Evaluate closed-circuit current monitoring**
 - Special Function added
 - Evaluate closed-circuit current monitoring
- CAS (Car Access System)**
 - Special Function added
 - Reset starter lock
 - DME - CAS adjustment
- DME (Digital Engine Electronics)**
 - Special Function
 - CO adjustment
 - Fuel consumption display
 - OBD readiness codes
- IHKA (Automatic heating/air conditioning)**
 - Special Function
 - Operating parameter of evaporator temperature
- 6 Series – E63 / E64 (2004 - 2010)**
- Register Battery Replacement**
 - Special Function added
 - Evaluate state of battery charge
- Evaluate closed-circuit current monitoring**
 - Special Function added
 - Evaluate closed-circuit current monitoring
- CAS (Car Access System)**
 - Special Function added
 - Reset starter lock
 - DME - CAS adjustment
- DME (Digital Engine Electronics)**
 - Special Function
 - CO adjustment
 - Fuel consumption display
 - OBD readiness codes
- RDC (Tire pressure control) added**
 - Basic Function
 - DTC analysis
 - Data analysis
 - Actuation test
 - ECU Information
- HUD (Head-Up Display) added**
 - Basic Function
 - DTC analysis
 - Data analysis
 - Actuation test
 - ECU Information
- IBOC (Digital tuner US) added**
- Basic Function
- DTC analysis
- Data analysis
- Actuation test
- ECU Information
- IHKA (Automatic heating/air conditioning)**
 - Special Function
 - Operating parameter of evaporator temperature
- 7 Series – E65 / E66 (2002 - 2008)**
- CAS (Car Access System)**
 - Special Function added
 - Reset starter lock
 - DME - CAS adjustment
- EMF (Parking brake)**
 - Special Function added
 - Bedding-in workshop
 - Positioning-travel check
- X1 – E84 (2009 - 2015)**
- Register Battery Replacement**
 - Special Function added
 - Evaluate state of battery charge
- Evaluate closed-circuit current monitoring**
 - Special Function added
 - Evaluate closed-circuit current monitoring
- CAS (Car Access System)**
 - Special Function added
 - Reset starter lock
 - DME - CAS adjustment
- X5 – E70 (2007 - 2012)**
- Register Battery Replacement**
 - Special Function added
 - Evaluate state of battery charge
- Evaluate closed-circuit current monitoring**
 - Special Function added
 - Evaluate closed-circuit current monitoring
- CAS (Car Access System)**
 - Special Function added
 - Reset starter lock
 - DME - CAS adjustment
- EHC (Electronic Height Control)**
 - Special Function added
 - Air supply system check
 - Check, compressor relay
 - Delete energy saving mode
 - Draining the air-spring bellows



G-scan & G-scan2 Distributor Bulletin

2017 September Update Details

Sep 05, 2017

Filling the air-spring bellows
Ride height sensor check

X6 – E71 (2008 - 2013)

Register Battery Replacement

- Special Function added
Evaluate state of battery charge

Evaluate closed-circuit current monitoring

- Special Function added
Evaluate closed-circuit current monitoring

CAS (Car Access System)

- Special Function added
Reset starter lock
DME - CAS adjustment

EHC (Electronic Height Control)

- Special Function added
Air supply system check
Check, compressor relay
Delete energy saving mode
Draining the air-spring bellows
Filling the air-spring bellows
Ride height sensor check

Z4 – E89 (2009 – present)

Register Battery Replacement

- Special Function added
Evaluate state of battery charge

Evaluate closed-circuit current monitoring

- Special Function added
Evaluate closed-circuit current monitoring

CAS (Car Access System)

- Special Function added
Reset starter lock
DME - CAS adjustment

1 series – F20 / F21 (2011 - present)

Engine start

- Special Function added
Register starter exchange
Reset starter lock

3 series – F30 / F31 / F34 / F35 / F80 (2012 - present)

Engine start

- Special Function added
Register starter exchange
Reset starter lock

4 series – F32 / F33 / F36 / F82 / F83 (2013 - present)

Engine start

- Special Function added

Register starter exchange
Reset starter lock

5 series – F07 / F10 / F11 / F18 (2010 - 2016)

Engine start

- Special Function added
Register starter exchange
Reset starter lock

6 series – F06 / F12 / F13 (2011 - present)

Engine start

- Special Function added
Register starter exchange
Reset starter lock

7 series – F01 / F02 / F03 / F04 (2009 - 2015)

Engine start

- Special Function added
Register starter exchange
Reset starter lock

X1 – F48 (2016 - present)

Engine start

- Special Function added
Register starter exchange
Reset starter lock

X3 – F25 (2010 - present)

Engine start

- Special Function added
Register starter exchange
Reset starter lock

X4 – F26 (2014 - present)

Engine start

- Special Function added
Register starter exchange
Reset starter lock

X5 – F15 (2013 - present)

Engine start

- Special Function added
Register starter exchange

X6 – F16 (2014 - present)

Engine start

- Special Function added
Register starter exchange
Reset starter lock

2 series: F22 / F23 / F45 / F46 (2014 - present) added

DME (Digital Motor Electronics)
EGS (Electronic transmission management)
EKPS (Electronic fuel-pump control)
GWS (Gear selector switch)

VTG (Transfer box)
 DSC (Dynamic stability control)
 EDC (Vertical dynamics management)
 EPS (Electromechanical power steering)
 ICM (Integrated chassis management)
 ACSM (Crash safety module)
 AMPH (Hi-Fi amplifier)
 ASD (Active Sound Design)
 HU-H (Head unit High)
 CON (Controller)
 CVM (Convertible-top module)
 FEM (Front electronic module)
 IHKA (Integrated automatic heating / air conditioning system)
 KAFAS (Camera-based driver-assistance systems)
 KOMBI (Instrument panel control unit)
 REM (Rear electronic module)
 SINE (Anti-theft alarm system)
 SMFA (Seat module, driver)
 SMBF (Seat module, passenger)
 TBX (Touch box)
 TCB (Telematics Communication Box)
 TRSVC (ALL round-view camera)
 ZGM (Central Gateway Module)

[Back to Index](#)

MINI

System Search function greatly improved for G-scan2*. Searching speed now takes merely few seconds but may take little longer depending on supported systems. This applies to model year 2007 and after.

*G-scan1 is not applicable due to its hardware limitation

MINI Hatch – R50 / R53 (2001 - 2006)

Transport mode

- Special Function added
Transport mode

EGS (Electronic transmission management) added

- Basic Function
DTC analysis
Data analysis
Actuation test
ECU Information

MINI Convertible – R52 (2005 - 2008)

Transport mode

- Special Function added
Transport mode

EGS (Electronic transmission management) added

- Basic Function
DTC analysis
Data analysis
Actuation test
ECU Information

MINI Hatch – R56 (2007 - 2013)

Register Battery Replacement

- Special Function added
Evaluate state of battery charge

Evaluate closed-circuit current monitoring

- Special Function added
Evaluate closed-circuit current monitoring

CAS (Car Access System)

- Special Function added
Reset starter lock
DME - CAS adjustment

DME (Digital Motor Electronics)

- Special Function added
Clear adaptations
Reset VANOS adaptation values
Valvetronic adaptation limit positions
VANOS adaptation

DSC (Dynamic stability control)

- Special Function added
Steering angle sensor
Pressure sensor adjustment
DSC sensor adjustment
Brake bleeding procedure
Brake line mix-up test

RDC (Tire pressure control)

- Special Function added
Initialization of tire pressure control

SHD (Sliding/tilting sunroof)

- Special Function added
Delivery position
Initialize slide/tilt sunroof

MINI Convertible – R57 (2009 -)

Register Battery Replacement

- Special Function added
Evaluate state of battery charge

Evaluate closed-circuit current monitoring

- Special Function added
Evaluate closed-circuit current monitoring

CAS (Car Access System)

- Special Function added

Reset starter lock
 DME - CAS adjustment

DME (Digital Motor Electronics)

- Special Function added
 - Clear adaptations
 - Reset VANOS adaptation values
 - Valvetronic adaptation limit positions
 - VANOS adaptation

DSC (Dynamic stability control)

- Special Function added
 - Steering angle sensor
 - Pressure sensor adjustment
 - DSC sensor adjustment
 - Brake bleeding procedure
 - Brake line mix-up test

RDC (Tire pressure control)

- Special Function added
 - Initialization of tire pressure control

CTM (Soft top module)

- Special Function added
 - Roll-over protection system

MINI Hatch – F55 / F56 (2014 - present)

Engine start

- Special Function added
 - Register starter exchange
 - Reset starter lock

LMV (Longitudinal torque distribution) added

- Basic Function
 - DTC analysis
 - Data analysis
 - Actuation test
 - ECU Information

HU-B added

- Basic Function
 - DTC analysis
 - Data analysis
 - Actuation test
 - ECU Information

KAFAS (Camera-based driver-assistance systems) added

- Basic Function
 - DTC analysis
 - Data analysis
 - Actuation test
 - ECU Information

SAS (Optional extra system) added

- Basic Function
 - DTC analysis
 - Actuation test
 - ECU Information

TRSVIC (ALL round-view camera) added

- Basic Function
 - DTC analysis
 - Data analysis
 - Actuation test
 - ECU Information

[Back to Index](#)

LAND ROVER

NEW SYSTEM ADDED

Freelander 2 (LR2) 2007 ~ 2010

FCDIM (Front Control/Display Interface Module)

- Basic Function
 - DTC Analysis
 - ECU Information

NCM (Navigation Control Module)

- Basic Function
 - DTC Analysis
 - ECU Information

BPM (Bluetooth Phone Module)

- Basic Function
 - DTC Analysis
 - ECU Information

AAM (Audio Amplifier Module)

- Basic Function
 - DTC Analysis
 - ECU Information

ACM (Audio Front Control Module)

- Basic Function
 - DTC Analysis
 - ECU Information

DABM (Digital Audio Broadcast Module)

- Basic Function
 - DTC Analysis
 - ECU Information

DACMC (Digital Audio Control Module C)

- Basic Function
 - DTC Analysis
 - ECU Information

SRM (Satellite Audio Unit Module)

- Basic Function
 - DTC Analysis
 - ECU Information

Freelander 2 (LR2) 2011 ~ 2012

FCDIM (Front Control/Display Interface Module)

- Basic Function
- DTC Analysis
- ECU Information

NCM (Navigation Control Module)

- Basic Function
- DTC Analysis
- ECU Information

BPM (Bluetooth Phone Module)

- Basic Function
- DTC Analysis
- ECU Information

AAM (Audio Amplifier Module)

- Basic Function
- DTC Analysis
- ECU Information

ACM (Audio Front Control Module)

- Basic Function
- DTC Analysis
- ECU Information

DACMC (Digital Audio Control Module C)

- Basic Function
- DTC Analysis
- ECU Information

SRM (Satellite Audio Unit Module)

- Basic Function
- DTC Analysis
- ECU Information

Freelander 2 (LR2) 2013 ~ 2014

PCM (Powertrain Control Module) - GTDI 2.0L

- Basic Function
- DTC Analysis
- ECU Information

NCM (Navigation Control Module)

- Basic Function
- DTC Analysis
- ECU Information

AAM (Audio Amplifier Module)

- Basic Function
- DTC Analysis
- ECU Information

ACM (Audio Front Control Module)

- Basic Function
- DTC Analysis
- ECU Information

DABM (Digital Audio Broadcast Module)

- Basic Function
- DTC Analysis
- ECU Information

SRM (Satellite Audio Unit Module)

- Basic Function
- DTC Analysis
- ECU Information

Discovery 4 (LR4) 2010 ~ 2011

PCM (Powertrain Control Module) - Normally Aspirated V8 5.0L

- Basic Function
- DTC Analysis
- ECU Information
- Advanced Function
- Reset Water in Fuel Detection
- Oxygen Sensor
- Fuel Lift Pump
- Throttle Valve Actuator
- Oxidane Catalyst

PCM (Powertrain Control Module) - Diesel V6 2.7L

- Basic Function
- DTC Analysis
- ECU Information
- Advanced Function
- Reset Water in Fuel Detection
- Oxygen Sensor
- Fuel Lift Pump
- Turbine Shut-off Valve
- Throttle Valve Actuator
- Oxidation Catalyst

PCM (Powertrain Control Module) - Diesel V6 3.0L

- Basic Function
- DTC Analysis
- ECU Information
- Advanced Function
- Reset Water in Fuel Detection
- Oxygen Sensor
- Fuel Lift Pump
- Turbine Shut-off Valve
- Throttle Valve Actuator
- Oxidation Catalyst

AAM (Audio Amplifier Module)

- Basic Function
- DTC Analysis
- ECU Information

ACM (Audio Front Control Module)

- Basic Function
- DTC Analysis
- ECU Information

DABM (Digital Audio Broadcast Module)

- Basic Function
- DTC Analysis
- ECU Information

DACMC (Digital Audio Control Module C)

-
- DTC Analysis
- ECU Information

FEM (Front Entertainment Module)

- Basic Function
- DTC Analysis
- ECU Information

REM (Rear Entertainment Control Module)

- Basic Function
 - DTC Analysis
 - ECU Information
- SPRM (Speech Recognition Control Module)**
- Basic Function
 - DTC Analysis
 - ECU Information
- SRM (Satellite Audio Unit Module)**
- Basic Function
 - DTC Analysis
 - ECU Information
- TVM (Television Module)**
- Basic Function
 - DTC Analysis
 - ECU Information
- Discovery 4 (LR4) 2012 ~ 2013**
- NCM (Navigation Control Module)**
- Basic Function
 - DTC Analysis
 - ECU Information
- AAM (Audio Amplifier Module)**
- Basic Function
 - DTC Analysis
 - ECU Information
- ACM (Audio Front Control Module)**
- Basic Function
 - DTC Analysis
 - ECU Information
- DABM (Digital Audio Broadcast Module)**
- Basic Function
 - DTC Analysis
 - ECU Information
- REM (Rear Entertainment Control Module)**
- Basic Function
 - DTC Analysis
 - ECU Information
- SRM (Satellite Audio Unit Module)**
- Basic Function
 - DTC Analysis
 - ECU Information
- TVM (Television Module)**
- Basic Function
 - DTC Analysis
 - ECU Information
- Discovery Sport 2015**
- PCM (Powertrain Control Module) - Diesel I4 2.2L**
- Basic Function
 - DTC Analysis
 - ECU Information
- Advanced Function
 - Service Interval Reset
- AWDCM (All Wheel Drive Control Module)**
- Basic Function
- TCU (Telematics Control Unit Module)**
- Basic Function
 - DTC Analysis
 - ECU Information
- GPSM (General Proximity Sensor Module)**
- Basic Function
- DTC Analysis
- ECU Information
- CAV (Connect and View Module)**
- Basic Function
 - DTC Analysis
 - ECU Information
- NAV (Navigation Control Module)**
- Basic Function
 - DTC Analysis
 - ECU Information
- AAM (Audio Amplifier Module)**
- Basic Function
 - DTC Analysis
 - ECU Information
- ACM (Audio Front Control Module)**
- Basic Function
 - DTC Analysis
 - ECU Information
- DABM (Digital Audio Broadcast Module)**
- Basic Function
 - DTC Analysis
 - ECU Information
- NCM (Navigation Control Module)**
- Basic Function
 - DTC Analysis
 - ECU Information
- REM (Rear Entertainment Control Module)**
- Basic Function
 - DTC Analysis
 - ECU Information
- SRM (Satellite Audio Unit Module)**
- Basic Function
 - DTC Analysis
 - ECU Information
- TVM (Television Module)**
- Basic Function
 - DTC Analysis
 - ECU Information

- Basic Function
 - DTC Analysis
 - ECU Information
- IPMA (Image Processing Control Module A)**
- Basic Function
 - DTC Analysis
 - ECU Information
- DRDM (Driver's Rear Door Module)**
- Basic Function
 - DTC Analysis
 - ECU Information
- PRDM (Passenger's Rear Door Module)**
- Basic Function
 - DTC Analysis
 - ECU Information
- AUCM (Head up Display Cooling Fan Module)**
- Basic Function
 - DTC Analysis
 - ECU Information
- CAV (Connect and View Module)**
- Basic Function
 - DTC Analysis
 - ECU Information
- HUD (Head up Display)**
- Basic Function
 - DTC Analysis
 - ECU Information
- NAV (Navigation Control Module)**
- Basic Function
 - DTC Analysis
 - ECU Information
- TBM (Deployable Towbar Control Module)**
- Basic Function
 - DTC Analysis
 - ECU Information
- AAM (Audio Amplifier Module)**
- Basic Function
 - DTC Analysis
 - ECU Information
- ACM (Audio Front Control Module)**
- Basic Function
 - DTC Analysis
 - ECU Information
- DABM (Digital Audio Broadcast Module)**
- Basic Function
 - DTC Analysis
 - ECU Information
- NCM (Navigation Control Module)**
- Basic Function
 - DTC Analysis
 - ECU Information
- REM (Rear Entertainment Control Module)**
- Basic Function
 - DTC Analysis
 - ECU Information
- SRM (Satellite Audio Unit Module)**
- Basic Function
 - DTC Analysis
 - ECU Information
- TVM (Television Module)**
- Basic Function
 - DTC Analysis
 - ECU Information
- Range Rover 2010 ~ 2012**
- AAM (Audio Amplifier Module)**
- Basic Function
 - DTC Analysis
 - ECU Information
- ACM (Audio Front Control Module)**
- Basic Function
 - DTC Analysis
 - ECU Information
- DABM (Digital Audio Broadcast Module)**
- Basic Function
 - DTC Analysis
 - ECU Information
- DACMC (Digital Audio Control Module C)**
- Basic Function
 - DTC Analysis
 - ECU Information
- FEM (Front Entertainment Module)**
- Basic Function
 - DTC Analysis
 - ECU Information
- REM (Rear Entertainment Control Module)**
- Basic Function
 - DTC Analysis
 - ECU Information
- SRM (Satellite Audio Unit Module)**
- Basic Function
 - DTC Analysis
 - ECU Information
- TVM (Television Module)**
- Basic Function
 - DTC Analysis
 - ECU Information
- Range Rover 2013**
- PCM (Powertrain Control Module) - Supercharged V8**
- Basic Function
 - DTC Analysis
 - ECU Information
- Advanced Function
 - Oil Service Counter Reset
- PCM (Powertrain Control Module) - Diesel V6 3.0L**
- Basic Function
 - DTC Analysis
 - ECU Information
- Advanced Function

- Oil Service Counter Reset
- PCM (Powertrain Control Module) - Diesel V8 4.4L**
- Basic Function
- DTC Analysis
- ECU Information
- Advanced Function
- Oil Service Counter Reset
- NCM (Navigation Control Module)**
- Basic Function
- DTC Analysis
- ECU Information
- AAM (Audio Amplifier Module)**
- Basic Function
- DTC Analysis
- ECU Information
- ACM (Audio Front Control Module)**
- Basic Function
- DTC Analysis
- ECU Information
- DABM (Digital Audio Broadcast Module)**
- Basic Function
- DTC Analysis
- ECU Information
- REM (Rear Entertainment Control Module)**
- Basic Function
- DTC Analysis
- ECU Information
- SRM (Satellite Audio Unit Module)**
- Basic Function
- DTC Analysis
- ECU Information
- TVM (Television Module)**
- Basic Function
- DTC Analysis
- ECU Information

- Range Rover 2014 ~ 2015**
- PCM (Powertrain Control Module) - Supercharged V6**
- Basic Function
- DTC Analysis
- ECU Information
- Advanced Function
- Service Interval Reset
- Oil Service Counter Reset
- PCM (Powertrain Control Module) - Normally Aspirated V8**
- Basic Function
- DTC Analysis
- ECU Information
- Advanced Function
- Service Interval Reset
- Oil Service Counter Reset
- PCM (Powertrain Control Module) - Supercharged V8**
- Basic Function
- DTC Analysis
- ECU Information
- Advanced Function
- Service Interval Reset
- Oil Service Counter Reset
- PCM (Powertrain Control Module) - Diesel V6 3.0L**
- Basic Function
- DTC Analysis
- ECU Information
- Advanced Function
- Service Interval Reset
- Oil Service Counter Reset
- PCM (Powertrain Control Module) - Diesel V8 4.4L**
- Basic Function
- DTC Analysis
- ECU Information
- Advanced Function
- Service Interval Reset
- Oil Service Counter Reset
- PCM (Powertrain Control Module) - GTDI 2.0L**
- Basic Function
- DTC Analysis
- ECU Information
- Advanced Function
- Service Interval Reset
- Oil Service Counter Reset
- TCU (Telematics Control Unit Module)**
- Basic Function
- DTC Analysis
- ECU Information
- BECM (Battery Energy Control Module)**
- Basic Function
- DTC Analysis
- ECU Information
- EPIC (Electric Power Inverter Converter Module)**
- Basic Function
- DTC Analysis
- ECU Information
- CHCMB (Chassis Control Module B)**
- Basic Function
- DTC Analysis
- ECU Information
- GPSM (General Proximity Sensor Module)**
- Basic Function
- DTC Analysis
- ECU Information
- CRTM (Calf Rest Table Module)**
- Basic Function
- DTC Analysis
- ECU Information
- RLSM (Rear Left Seat Module)**
- Basic Function
- DTC Analysis
- ECU Information
- RRSM (Rear Right Seat Module)**
- Basic Function
- DTC Analysis



G-scan & G-scan2 Distributor Bulletin

2017 September Update Details

Sep 05, 2017

- ECU Information
- AUCM (Head up Display Cooling Fan Module)**
 - Basic Function
 - DTC Analysis
 - ECU Information
- CAV (Connect and View Module)**
 - Basic Function
 - DTC Analysis
 - ECU Information
- FCIMC (Front Controls Interface Module C)**
 - Basic Function
 - DTC Analysis
 - ECU Information
- HUD (Head up Display)**
 - Basic Function
 - DTC Analysis
 - ECU Information
- NAV (Navigation Control Module)**
 - Basic Function
 - DTC Analysis
 - ECU Information
- AAM (Audio Amplifier Module)**
 - Basic Function
 - DTC Analysis
 - ECU Information
- ACM (Audio Front Control Module)**
 - Basic Function
 - DTC Analysis
 - ECU Information
- DABM (Digital Audio Broadcast Module)**
 - Basic Function
 - DTC Analysis
 - ECU Information
- NCM (Navigation Control Module)**
 - Basic Function
 - DTC Analysis
 - ECU Information
- REM (Rear Entertainment Control Module)**
 - Basic Function
 - DTC Analysis
 - ECU Information
- SRM (Satellite Audio Unit Module)**
 - Basic Function
 - DTC Analysis
 - ECU Information
- TVM (Television Module)**
 - Basic Function
 - DTC Analysis
 - ECU Information
- Range Rover 2016**
 - PCM (Powertrain Control Module) - Supercharged V6**
 - Basic Function
 - DTC Analysis
 - ECU Information
 - Advanced Function
 - Service Interval Reset
 - Oil Service Counter Reset
- PCM (Powertrain Control Module) - Normally Aspirated V8**
 - Basic Function
 - DTC Analysis
 - ECU Information
 - Advanced Function
 - Service Interval Reset
 - Oil Service Counter Reset
- PCM (Powertrain Control Module) - Supercharged V8**
 - Basic Function
 - DTC Analysis
 - ECU Information
 - Advanced Function
 - Service Interval Reset
 - Oil Service Counter Reset
- PCM (Powertrain Control Module) - Diesel V6 3.0L**
 - Basic Function
 - DTC Analysis
 - ECU Information
 - Advanced Function
 - Service Interval Reset
 - Oil Service Counter Reset
- PCM (Powertrain Control Module) - Diesel V8 4.4L**
 - Basic Function
 - DTC Analysis
 - ECU Information
 - Advanced Function
 - Service Interval Reset
 - Oil Service Counter Reset
- PCM (Powertrain Control Module) - GTDI 2.0L**
 - Basic Function
 - DTC Analysis
 - ECU Information
 - Advanced Function
 - Service Interval Reset
- TCU (Telematics Control Unit Module)**
 - Basic Function
 - DTC Analysis
 - ECU Information
- BECM (Battery Energy Control Module)**
 - Basic Function
 - DTC Analysis
 - ECU Information
- EPIC (Electric Power Inverter Converter Module)**
 - Basic Function
 - DTC Analysis
 - ECU Information
- Basic Function
 - DTC Analysis
 - ECU Information
- GPSM (General Proximity Sensor Module)**

- Basic Function
 - DTC Analysis
 - ECU Information
- IPMA (Image Processing Control Module A)**
- Basic Function
 - DTC Analysis
 - ECU Information
- CRTM (Calf Rest Table Module)**
- Basic Function
 - DTC Analysis
 - ECU Information
- DRDM (Driver's Rear Door Module)**
- Basic Function
 - DTC Analysis
 - ECU Information
- PRDM (Passenger's Rear Door Module)**
- Basic Function
 - DTC Analysis
 - ECU Information
- AUCM (Head up Display Cooling Fan Module)**
- Basic Function
 - DTC Analysis
 - ECU Information
- CAV (Connect and View Module)**
- Basic Function
 - DTC Analysis
 - ECU Information
- FCIMC (Front Controls Interface Module C)**
- Basic Function
 - DTC Analysis
 - ECU Information
- HUD (Head up Display)**
- Basic Function
 - DTC Analysis
 - ECU Information
- NAV (Navigation Control Module)**
- Basic Function
 - DTC Analysis
 - ECU Information
- AAM (Audio Amplifier Module)**
- Basic Function
 - DTC Analysis
 - ECU Information
- ACM (Audio Front Control Module)**
- Basic Function
 - DTC Analysis
 - ECU Information
- DABM (Digital Audio Broadcast Module)**
- Basic Function
 - DTC Analysis
 - ECU Information
- REM (Rear Entertainment Control Module)**
- Basic Function
 - DTC Analysis
 - ECU Information
- SRM (Satellite Audio Unit Module)**
- Basic Function
 - DTC Analysis
 - ECU Information
- TVM (Television Module)**
- Basic Function
 - DTC Analysis
 - ECU Information
- Range Rover Evoque 2012 ~ 2013**
- NCM (Navigation Control Module)**
- Basic Function
 - DTC Analysis
 - ECU Information
- AAM (Audio Amplifier Module)**
- Basic Function
 - DTC Analysis
 - ECU Information
- ACM (Audio Front Control Module)**
- Basic Function
 - DTC Analysis
 - ECU Information
- DABM (Digital Audio Broadcast Module)**
- Basic Function
 - DTC Analysis
 - ECU Information
- REM (Rear Entertainment Control Module)**
- Basic Function
 - DTC Analysis
 - ECU Information
- SRM (Satellite Audio Unit Module)**
- Basic Function
 - DTC Analysis
 - ECU Information
- TVM (Television Module)**
- Basic Function
 - DTC Analysis
 - ECU Information
- Range Rover Evoque 2014 ~ 2015**
- AWDCM (All Wheel Drive Control Module)**
- Basic Function
 - DTC Analysis
 - ECU Information
- TCU (Telematics Control Unit Module)**
- Basic Function
 - DTC Analysis
 - ECU Information
- GPSM (General Proximity Sensor Module)**
- Basic Function
 - DTC Analysis

ECU Information
AUCM (Head up Display Cooling Fan Module)

- Basic Function
- DTC Analysis
- ECU Information

CAV (Connect and View Module)

- Basic Function
- DTC Analysis
- ECU Information

HUD (Head up Display)

- Basic Function
- DTC Analysis
- ECU Information

NAV (Navigation Control Module)

- Basic Function
- DTC Analysis
- ECU Information

AAM (Audio Amplifier Module)

- Basic Function
- DTC Analysis
- ECU Information

ACM (Audio Front Control Module)

- Basic Function
- DTC Analysis
- ECU Information

DABM (Digital Audio Broadcast Module)

- Basic Function
- DTC Analysis
- ECU Information

NCM (Navigation Control Module)

- Basic Function
- DTC Analysis
- ECU Information

REM (Rear Entertainment Control Module)

- Basic Function
- DTC Analysis
- ECU Information

SRM (Satellite Audio Unit Module)

- Basic Function
- DTC Analysis
- ECU Information

TVM (Television Module)

- Basic Function
- DTC Analysis
- ECU Information

Range Rover Evoque 2016

PCM (Powertrain Control Module) - Diesel I4 2.2L

- Basic Function
- DTC Analysis
- ECU Information

- Advanced Function
- Service Interval Reset

AWDCM (All Wheel Drive Control Module)

- Basic Function

DTC Analysis

ECU Information

TCU (Telematics Control Unit Module)

- Basic Function
- DTC Analysis
- ECU Information

GPSM (General Proximity Sensor Module)

- Basic Function
- DTC Analysis
- ECU Information

IPMA (Image Processing Control Module A)

- Basic Function
- DTC Analysis
- ECU Information

DRDM (Driver's Rear Door Module)

- Basic Function
- DTC Analysis
- ECU Information

PRDM (Passenger's Rear Door Module)

- Basic Function
- DTC Analysis
- ECU Information

AUCM (Head up Display Cooling Fan Module)

- Basic Function
- DTC Analysis
- ECU Information

CAV (Connect and View Module)

- Basic Function
- DTC Analysis
- ECU Information

FCDIM (Front Control/Display Interface Module)

- Basic Function
- DTC Analysis
- ECU Information

HUD (Head up Display)

- Basic Function
- DTC Analysis
- ECU Information

NAV (Navigation Control Module)

- Basic Function
- DTC Analysis
- ECU Information

AAM (Audio Amplifier Module)

- Basic Function
- DTC Analysis
- ECU Information

ACM (Audio Front Control Module)

- Basic Function
- DTC Analysis
- ECU Information

DABM (Digital Audio Broadcast Module)

- Basic Function
- DTC Analysis
- ECU Information

NCM (Navigation Control Module)

- Basic Function
 - DTC Analysis
 - ECU Information
- REM (Rear Entertainment Control Module)**
- Basic Function
 - DTC Analysis
 - ECU Information
- SRM (Satellite Audio Unit Module)**
- Basic Function
 - DTC Analysis
 - ECU Information
- TVM (Television Module)**
- Basic Function
 - DTC Analysis
 - ECU Information
- Range Rover Evoque Convertible 2016**
- PCM (Powertrain Control Module) - Diesel I4 2.2L**
- Basic Function
 - DTC Analysis
 - ECU Information
- Advanced Function
 - Service Interval Reset
- AWDCM (All Wheel Drive Control Module)**
- Basic Function
 - DTC Analysis
 - ECU Information
- TCU (Telematics Control Unit Module)**
- Basic Function
 - DTC Analysis
 - ECU Information
- GPSM (General Proximity Sensor Module)**
- Basic Function
 - DTC Analysis
 - ECU Information
- IPMA (Image Processing Control Module A)**
- Basic Function
 - DTC Analysis
 - ECU Information
- AUCM (Head up Display Cooling Fan Module)**
- Basic Function
 - DTC Analysis
 - ECU Information
- HUD (Head up Display)**
- Basic Function
 - DTC Analysis
 - ECU Information
- DRDM (Driver's Rear Door Module)**
- Basic Function
 - DTC Analysis
 - ECU Information
- PRDM (Passenger's Rear Door Module)**
- Basic Function
 - DTC Analysis
- ECU Information
- Range Rover Sport 2010 ~ 2011**
- PCM (Powertrain Control Module) - Supercharged V8 5.0L**
- Basic Function
 - DTC Analysis
 - ECU Information
- PCM (Powertrain Control Module) - Diesel V6 3.0L**
- Basic Function
 - DTC Analysis
 - ECU Information
- Advanced Function
 - Oil Service Counter Reset
- PCM (Powertrain Control Module) - Diesel V8 3.6L**
- Basic Function
 - DTC Analysis
 - ECU Information
- Advanced Function
 - Oil Service Counter Reset
- AAM (Audio Amplifier Module)**
- Basic Function
 - DTC Analysis
 - ECU Information
- ACM (Audio Front Control Module)**
- Basic Function
 - DTC Analysis
 - ECU Information
- DABM (Digital Audio Broadcast Module)**
- Basic Function
 - DTC Analysis
 - ECU Information
- DACMC (Digital Audio Control Module C)**
- Basic Function
 - DTC Analysis
 - ECU Information
- FEM (Front Entertainment Module)**
- Basic Function
 - DTC Analysis
 - ECU Information
- REM (Rear Entertainment Control Module)**
- Basic Function
 - DTC Analysis
 - ECU Information
- SRM (Satellite Audio Unit Module)**
- Basic Function
 - DTC Analysis
 - ECU Information
- TVM (Television Module)**
- Basic Function
 - DTC Analysis
 - ECU Information
- Range Rover Sport 2012 ~ 2013**
- NCM (Navigation Control Module)**

- Basic Function
 - DTC Analysis
 - ECU Information
- AAM (Audio Amplifier Module)**
- Basic Function
 - DTC Analysis
 - ECU Information
- ACM (Audio Front Control Module)**
- Basic Function
 - DTC Analysis
 - ECU Information
- DABM (Digital Audio Broadcast Module)**
- Basic Function
 - DTC Analysis
 - ECU Information
- REM (Rear Entertainment Control Module)**
- Basic Function
 - DTC Analysis
 - ECU Information
- SRM (Satellite Audio Unit Module)**
- Basic Function
 - DTC Analysis
 - ECU Information
- TVM (Television Module)**
- Basic Function
 - DTC Analysis
 - ECU Information
- Range Rover Sport 2014 ~ 2015**
- PCM (Powertrain Control Module) - GTDI 2.0L**
- Basic Function
 - DTC Analysis
 - ECU Information
- Advanced Function
 - Service Interval Reset
- PCM (Powertrain Control Module) - Diesel V8 4.4L**
- Basic Function
 - DTC Analysis
 - ECU Information
- Advanced Function
 - Service Interval Reset
- PCM (Powertrain Control Module) - Supercharged V8**
- Basic Function
 - DTC Analysis
 - ECU Information
- Advanced Function
 - Service Interval Reset
- PCM (Powertrain Control Module) - Hybrid 3.0L**
- Basic Function
 - DTC Analysis
 - ECU Information
- Advanced Function
 - Service Interval Reset
- TCU (Telematics Control Unit Module)**
- Basic Function
 - DTC Analysis
 - ECU Information
- BECM (Battery Energy Control Module)**
- Basic Function
 - DTC Analysis
 - ECU Information
- EPIC (Electric Power Inverter Converter Module)**
- Basic Function
 - DTC Analysis
 - ECU Information
- CHCMB (Chassis Control Module B)**
- Basic Function
 - DTC Analysis
 - ECU Information
- GPSM (General Proximity Sensor Module)**
- Basic Function
 - DTC Analysis
 - ECU Information
- RLSM (Rear Left Seat Module)**
- Basic Function
 - DTC Analysis
 - ECU Information
- RRSM (Rear Right Seat Module)**
- Basic Function
 - DTC Analysis
 - ECU Information
- AUCM (Head up Display Cooling Fan Module)**
- Basic Function
 - DTC Analysis
 - ECU Information
- CAV (Connect and View Module)**
- Basic Function
 - DTC Analysis
 - ECU Information
- FCIMC (Front Controls Interface Module C)**
- Basic Function
 - DTC Analysis
 - ECU Information
- HUD (Head up Display)**
- Basic Function
 - DTC Analysis
 - ECU Information
- NAV (Navigation Control Module)**
- Basic Function
 - DTC Analysis
 - ECU Information
- AAM (Audio Amplifier Module)**
- Basic Function
 - DTC Analysis
 - ECU Information
- ACM (Audio Front Control Module)**
- Basic Function
 - DTC Analysis
 - ECU Information



G-scan & G-scan2 Distributor Bulletin

2017 September Update Details

Sep 05, 2017

- Basic Function

DTC Analysis

ECU Information

NCM (Navigation Control Module)

- Basic Function

DTC Analysis

ECU Information

REM (Rear Entertainment Control Module)

- Basic Function

DTC Analysis

ECU Information

SRM (Satellite Audio Unit Module)

- Basic Function

DTC Analysis

ECU Information

TVM (Television Module)

- Basic Function

DTC Analysis

ECU Information

Range Rover Sport 2016 ~

PCM (Powertrain Control Module) - GTDI 2.0L

- Basic Function

DTC Analysis

ECU Information

- Advanced Function

Service Interval Reset

PCM (Powertrain Control Module) - Diesel V8 4.4L

- Basic Function

DTC Analysis

ECU Information

- Advanced Function

Service Interval Reset

PCM (Powertrain Control Module) - Supercharged V8 5.0L

- Basic Function

DTC Analysis

ECU Information

- Advanced Function

Service Interval Reset

PCM (Powertrain Control Module) - Hybrid 3.0L

- Basic Function

DTC Analysis

ECU Information

- Advanced Function

Service Interval Reset

TCU (Telematics Control Unit Module)

- Basic Function

DTC Analysis

ECU Information

BECM (Battery Energy Control Module)

- Basic Function

DTC Analysis

ECU Information

EPIC (Electric Power Inverter Converter Module)

- Basic Function

DTC Analysis

ECU Information

CHCMB (Chassis Control Module B)

- Basic Function

DTC Analysis

ECU Information

GPSM (General Proximity Sensor Module)

- Basic Function

DTC Analysis

ECU Information

IPMA (Image Processing Control Module A)

- Basic Function

DTC Analysis

ECU Information

DRDM (Driver's Rear Door Module)

- Basic Function

DTC Analysis

ECU Information

PRDM (Passenger's Rear Door Module)

- Basic Function

DTC Analysis

ECU Information

AUCM (Head up Display Cooling Fan Module)

- Basic Function

DTC Analysis

ECU Information

CAV (Connect and View Module)

- Basic Function

DTC Analysis

ECU Information

FCIMC (Front Controls Interface Module C)

- Basic Function

DTC Analysis

ECU Information

HUD (Head up Display)

- Basic Function

DTC Analysis

ECU Information

NAV (Navigation Control Module)

- Basic Function

DTC Analysis

ECU Information

AAM (Audio Amplifier Module)

- Basic Function

DTC Analysis

ECU Information

ACM (Audio Front Control Module)

- Basic Function

DTC Analysis

ECU Information

DABM (Digital Audio Broadcast Module)

- Basic Function

DTC Analysis

ECU Information



G-scan & G-scan2 Distributor Bulletin

2017 September Update Details

Sep 05, 2017

NCM (Navigation Control Module)

- Basic Function
- DTC Analysis
- ECU Information

REM (Rear Entertainment Control Module)

- Basic Function
- DTC Analysis
- ECU Information

SRM (Satellite Audio Unit Module)

- Basic Function
- DTC Analysis
- ECU Information

TVM (Television Module)

- Basic Function
- DTC Analysis
- ECU Information

NEW FUNCTIONS ADDED

Defender 2011

ABS (ABS Control Module)

- Advanced Function
- Brake Bleed

Defender 2012 ~ 2015

ABS (ABS Control Module)

- Advanced Function
- Brake Bleed

Freelander 2 (LR2) 2007 ~ 2010

BCM (Body Control Module)

- Advanced Function
- Battery Replacement

Freelander 2 (LR2) 2011 ~ 2012

BCM (Body Control Module)

- Advanced Function
- Battery Replacement

Freelander 2 (LR2) 2013 ~ 2014

PCM (Powertrain Control Module) - Diesel I4

- Advanced Function
- Oil Service Counter Reset

BCM (Body Control Module)

- Advanced Function
- Battery Replacement

PBM (Parking Brake Control Module)

- Advanced Function
- Parking Brake Pad Replacement - Release to Service Position
- Parking Brake Pad Replacement - Exit Maintenance Mode Application
- Parking Brake Activation

Discovery 4 (LR4) 2010 ~ 2011

ABS (ABS Control Module)

- Advanced Function
- Brake Bleed

BCM (Body Control Module)

- Advanced Function
- Battery Replacement

IPC (Instrument Cluster Control Module)

- Advanced Function
- Service Interval Reset

Discovery 4 (LR4) 2012 ~ 2013

PCM (Powertrain Control Module) - 306DT - V6 3.0 Hi Pwr Diesel non cDPF

- Advanced Function
- Oil Service Counter Reset

PCM (Powertrain Control Module) - 306DT - V6 3.0 Hi Pwr Diesel with cDPF

- Advanced Function
- Oil Service Counter Reset

PCM (Powertrain Control Module) - 306DT - V6 3.0 Lo Pwr Diesel with cDPF

- Advanced Function
- Oil Service Counter Reset

ABS (ABS Control Module)

- Advanced Function
- Brake Bleed

BCM (Body Control Module)

- Advanced Function
- Battery Replacement

IPC (Instrument Cluster Control Module)

- Advanced Function
- Service Interval Reset

PBM (Parking Brake Control Module)

- Advanced Function
- Drive The Parking Brake To The Mounting Position

Parking Brake Unjam Procedure

Discovery 4 (LR4) 2014 ~ 2015

PCM (Powertrain Control Module) - Supercharged V6

- Advanced Function
- Service Interval Reset
- Oil Service Counter Reset

ABS (ABS Control Module)

- Advanced Function
- Brake Bleed

PBM (Parking Brake Control Module)

- Advanced Function
- Drive The Parking Brake To The Mounting Position
- Drive The Parking Brake To The Latching Position
- Parking Brake Unjam Procedure

GWM (Gateway Module)

- Advanced Function
- Battery Replacement - Main Battery
- Battery Replacement - Second Battery

Battery Replacement - Both Battery

Discovery Sport 2015

PCM (Powertrain Control Module) - GTDI 2.0L

- Advanced Function
- Service Interval Reset

RANGE ROVER 2006

VDM (Vehicle dynamics module (ABS))

- Advanced Function
- Brake Bleed (Petrol Only)

RLM (Ride Level Control Module)

- Advanced Function
- Air-suspension deflation
- Air-suspension inflation

RANGE ROVER 2007 ~ 2009

VDM (Vehicle dynamics module (ABS))

- Advanced Function
- Brake Bleed (Diesel Only)
- Brake Bleed (Petrol Only)

PBM (Parking Brake Control Module)

- Advanced Function
- Parking Brake - Drive The Parking Brake To The Mounting Position
- Parking Brake - Drive The Parking Brake To The Latching Position
- Parking Brake - Parking Brake Unjam Procedure

RLM (Ride Level Control Module)

- Advanced Function
- Air-suspension deflation
- Air-suspension inflation

RANGE ROVER 2010 ~ 2012

ABS (ABS Control Module)

- Advanced Function
- Brake Bleed

BCM (Body Control Module)

- Advanced Function
- Battery Replacement

IPC (Instrument Cluster Control Module)

- Advanced Function
- Service Interval Reset

PBM (Parking Brake Control Module)

- Advanced Function
- Parking Brake - Drive The Parking Brake To The Mounting Position
- Parking Brake - Drive The Parking Brake To The Latching Position
- Parking Brake - Parking Brake Unjam Procedure

RLM (Ride Level Control Module)

- Advanced Function
- Air-suspension deflation
- Air-suspension inflation
- Set/un-set air suspension geometry set-up

RANGE ROVER 2013

PCM (Powertrain Control Module) - Normally Aspirated V8

- Advanced Function
- Oil Service Counter Reset

ABS (ABS Control Module)

- Advanced Function
- Brake Bleed

IPC (Instrument Cluster Control Module)

- Advanced Function
- Service Interval Reset

GWM (Gateway Module)

- Advanced Function
- Battery Replacement - Main Battery
- Battery Replacement - Second Battery
- Battery Replacement - Both Battery

PBM (Parking Brake Control Module)

- Advanced Function
- Parking Brake Pad Replacement - Release to Service Position
- Parking Brake Pad Replacement - Exit Maintenance Mode Application
- Parking Brake Activation

RANGE ROVER 2014 ~ 2015

PCM (Powertrain Control Module) - Hybrid 3.0L

- Advanced Function
- Oil Service Counter Reset

ABS (ABS Control Module)

- Advanced Function
- Brake Bleed

PBM (Parking Brake Control Module)

- Advanced Function
- Parking Brake Activation

GWM (Gateway Module)

- Advanced Function
- Battery Replacement - Main Battery
- Battery Replacement - Second Battery
- Battery Replacement - Both Battery

RANGE ROVER 2016

PCM (Powertrain Control Module) - Hybrid 3.0L

- Advanced Function
- Service Interval Reset (Diesel)

PBM (Parking Brake Control Module)

- Advanced Function
- Parking Brake Pad Replacement - Release to Service Position
- Parking Brake Pad Replacement - Exit Maintenance Mode Application
- Parking Brake Activation

Range Rover Evoque 2012 ~ 2013

BCM (Body Control Module)

- Advanced Function

Battery Replacement

Range Rover Evoque 2014 ~ 2015

PBM (Parking Brake Control Module)

- Advanced Function
 - Parking Brake Pad Replacement - Release to Service Position
 - Parking Brake Pad Replacement - Exit Maintenance Mode Application
 - Parking Brake Activation

GWM (Gateway Module)

- Advanced Function
 - Battery Replacement - Main Battery
 - Battery Replacement - Second Battery
 - Battery Replacement - Both Battery

Range Rover Sport 2006 ~ 2009

PCM (Powertrain Control Module) - 276DT - V6 2.7 Diesel

- Advanced Function
 - Oil Service Counter Reset

PCM (Powertrain Control Module) - 276DT - V6 2.7 Diesel non cDPF

- Advanced Function
 - Oil Service Counter Reset

Range Rover Sport 2010 ~ 2011

ABS (ABS Control Module)

- Advanced Function
 - Brake Bleed

BCM (Body Control Module)

- Advanced Function
 - Battery Replacement

Range Rover Sport 2012 ~ 2013

PCM (Powertrain Control Module) - 306DT - V6 3.0 Diesel

- Advanced Function
 - Oil Service Counter Reset

PCM (Powertrain Control Module) - 306DT - V6 3.0 Diesel with cDPF

- Advanced Function
 - Oil Service Counter Reset

PCM (Powertrain Control Module) - 368DT - V8 3.6 Diesel

- Advanced Function
 - Oil Service Counter Reset

ABS (ABS Control Module)

- Advanced Function
 - Brake Bleed

BCM (Body Control Module)

- Advanced Function
 - Battery Replacement

IPC (Instrument Cluster Control Module)

- Advanced Function

Service Interval Reset

PBM (Parking Brake Control Module)

- Advanced Function
 - Drive The Parking Brake To The Mounting Position
 - Drive The Parking Brake To The Latching Position
 - Parking Brake Unjam Procedure

HVAC (Heating Ventilation and Air Conditioning Control Module)

- Advanced Function
 - Stepper Motor Initialization
 - Actuators end stop detection

Range Rover Sport 2014 ~ 2015

ABS (ABS Control Module)

- Advanced Function
 - Brake Bleed

PBM (Parking Brake Control Module)

- Advanced Function
 - Parking Brake Pad Replacement - Release to Service Position
 - Parking Brake Pad Replacement - Exit Maintenance Mode Application
 - Parking Brake Activation

GWM (Gateway Module)

- Advanced Function
 - Battery Replacement - Main Battery
 - Battery Replacement - Second Battery
 - Battery Replacement - Both Battery

Range Rover Sport 2016 ~

PBM (Parking Brake Control Module)

- Advanced Function
 - Parking Brake Pad Replacement - Release to Service Position
 - Parking Brake Pad Replacement - Exit Maintenance Mode Application
 - Parking Brake Activation

[Back to Index](#)

JAGUAR

NEW SYSTEM ADDED

XF 2010 ~ 2011

PCM (Powertrain Control Module) - Normally Aspirated V8 4.2L

- Basic Function
 - DTC Analysis
 - Data Analysis
 - ECU Information
- Advanced Function
 - Fuel Prime Routine

Fuel Lift Pump
PCM (Powertrain Control Module) - Normally Aspirated V8 5.0L

- Basic Function
 - DTC Analysis
 - Data Analysis
 - ECU Information
- Advanced Function
 - Fuel Prime Routine
 - Fuel Lift Pump

PCM (Powertrain Control Module) - Supercharged V8 5.0L

- Basic Function
 - DTC Analysis
 - Data Analysis
 - ECU Information
- Advanced Function
 - Fuel Prime Routine
 - Fuel Lift Pump

XF 2012

PCM (Powertrain Control Module) - Normally Aspirated V8

- Basic Function
 - DTC Analysis
 - Data Analysis
 - ECU Information
- Advanced Function
 - Fuel Prime Routine
 - Fuel Lift Pump

PCM (Powertrain Control Module) - Supercharged V8

- Basic Function
 - DTC Analysis
 - Data Analysis
 - ECU Information
- Advanced Function
 - Fuel Prime Routine
 - Fuel Lift Pump

PCM (Powertrain Control Module) - V6 Diesel

- Basic Function
 - DTC Analysis
 - Data Analysis
 - ECU Information
- Advanced Function
 - Diesel particulate filter replacement
 - Diesel Particulate Filter Dynamic Regeneration
 - Fuel Lift Pump

NEW FUNCTION ADDED

F-Type 2014 ~ 2015

GWM (Gateway Module)

- Advanced Function
 - Battery Replacement - Main Battery
 - Battery Replacement - Second Battery

Battery Replacement - Both Battery

F-Type 2016 ~

PBM (Parking Brake Control Module)

- Advanced Function
 - Parking brake pad replacement - Release to service position
 - Parking brake pad replacement - Exit maintenance mode application
 - Parking brake activation

GWM (Gateway Module)

- Advanced Function
 - Battery Replacement - Main Battery
 - Battery Replacement - Second Battery

XF 2008 ~ 2009 ~

PCM (Powertrain Control Module) - Petrol

- Advanced Function
 - Fuel Prime Routine
 - Fuel Lift Pump

PCM (Powertrain Control Module) - Diesel

- Advanced Function
 - Fuel Lift Pump

BCMB (Body Control Module B)

- Advanced Function
 - Battery Replacement

XF 2010 ~ 2011

PCM (Powertrain Control Module) - Normally Aspirated V6

- Basic Function
 - Data Analysis
- Advanced Function
 - Fuel Prime Routine
 - Fuel Lift Pump

PCM (Powertrain Control Module) - Diesel

- Basic Function
 - Data Analysis
- Advanced Function
 - Fuel Lift Pump

BCMB (Body Control Module B)

- Advanced Function
 - Battery Replacement

XF 2012

PCM (Powertrain Control Module) - Normally Aspirated V6

- Basic Function
 - Data Analysis
- Advanced Function
 - Fuel Prime Routine
 - Fuel Lift Pump

PCM (Powertrain Control Module) - I4 Diesel

- Basic Function
 - Dat



G-scan & G-scan2 Distributor Bulletin

2017 September Update Details

Sep 05, 2017

- Advanced Function
Fuel Lift Pump

BCMB (Body Control Module B)

- Advanced Function
Battery Replacement

XF 2013 ~ 2015

PCM (Powertrain Control Module) - Supercharged V6

- Basic Function
Data Analysis

PCM (Powertrain Control Module) - Supercharged V8

- Basic Function
Data Analysis

PCM (Powertrain Control Module) - I4 Diesel

- Basic Function
Data Analysis

PCM (Powertrain Control Module) - V6 Diesel

- Basic Function
Data Analysis

PCM (Powertrain Control Module) - GTDi

- Basic Function
Data Analysis

GWM (Gateway Module)

- Advanced Function
Battery Replacement - Main Battery
Battery Replacement - Second Battery
Battery Replacement - Both Battery

PCM (Powertrain Control Module) - Supercharged V6

- Basic Function
Data Analysis

PCM (Powertrain Control Module) - I4 Diesel

- Basic Function
Data Analysis

PCM (Powertrain Control Module) - V6 Diesel

- Basic Function
Data Analysis

PCM (Powertrain Control Module) - GTDi

- Basic Function
Data Analysis

ABS (ABS Control Module)

- Advanced Function
Parking brake pad replacement - Release to service position
Parking brake pad replacement - Exit maintenance mode application
Parking brake activation
Brake bleed

GWM (Gateway Module)

- Advanced Function
Battery Replacement

XJ Series 2010 ~ 2012

BCM (Body Control Module)

- Advanced Function
Battery Replacement

RLM (Ride Level Control Module)

- Advanced Function
Air-suspension deflation
Air-suspension inflation

XJ Series 2013 ~ 2015

GWM (Gateway Module)

- Advanced Function
Battery Replacement - Main Battery
Battery Replacement - Second Battery
Battery Replacement - Both Battery

XJ Series 2016 ~

PBM (Parking Brake Control Module)

- Advanced Function
Parking brake pad replacement - Release to service position
Parking brake pad replacement - Exit maintenance mode application
Parking brake activation

GWM (Gateway Module)

- Advanced Function
Battery Replacement

XK Series 2010 ~2015

BCMB (Body Control Module B)

- Advanced Function
Battery Replacement

XE 2016 ~

ABS (ABS Control Module)

- Advanced Function
Parking brake pad replacement - Release to service position
Parking brake pad replacement - Exit maintenance mode application
Parking brake activation
Brake bleed

GWM (Gateway Module)

- Advanced Function
Battery Replacement

F-PACE 2017 ~

ABS (ABS Control Module)

- Advanced Function
Parking brake pad replacement - Release to service position
Parking brake pad replacement - Exit maintenance mode application
Parking brake activation
Brake bleed

GWM (Gateway Module)

- Advanced Function

Battery Replacement

[Back to Index](#)

MERCEDES BENZ

New function added

A-CLASS(176)/AMGGT(190)/B-CLASS(246)/C-CLASS(204)/CLA-CLASS(117)/CL-CLASS(216)/CLS-CLASS(218)/E-CLASS(207)/E-CLASS(212)/G-CLASS(463)/GLA-CLASS(156)/GL-CLASS(166)/GLE-CLASS(292)/R-CLASS(251)/S-CLASS(221)/SL-CLASS(231)/SLK-CLASS(172)

FSCU/FSCU-L - Control unit Fuel pump

- Basic function
 - Actuation Test
- Support function
 - Empty fuel tank

A-CLASS(176)/B-CLASS(246)/C-CLASS(204)/C-CLASS(205)/CLA-CLASS(117)/CLS-CLASS(218)/E-CLASS(207)/E-CLASS(212)/GLA-CLASS(156)/GLC-CLASS(253)

ME/CDI/CNG - Engine control unit

- Support function
 - Activation of fuel pump
 - Teach in of throttle valve stop
 - Teach in of EGR actuator
 - Teach in of positions for camshafts
 - Resetting of adaptation values
 - Perform teach in process sensor rotor adaptation
 - Enabling of engine start after crash event

A-CLASS (176)/B-CLASS (246)/CLA-CLASS (117)/GLA-CLASS (156)

ME/CDI/CNG - Engine control unit

- Basic function
 - Data Analysis
 - Actuation Test
- Support function
 - Diagnostic glowing test
 - DPF Regeneration heater booster control unit test
 - Status of teach-in processes
 - Regeneration of the DPF while driving
 - Injector injection quantity adjustment
 - Road test for adaptation of fuel injectors
 - Teach in Throttle valve actuator
 - Teach in Exhaust gas recirculation actuator, high pressure

- Teach in Exhaust gas recirculation actuator, low pressure
- Teach in Exhaust flap controller
- Resetting of Fuel injectors learned value
- Resetting of Rail pressure sensor learned value
- Resetting of Fuel system high pressure pump learned value
- Resetting of Differential pressure sensor (DPF) learned value
- Resetting of O2 Sensor upstream of catalytic converter learned value
- Resetting of Turbocharger learned value
- Resetting of DPF filter learned value
- Activation of Fuel pump

A-CLASS (176)/CLA-CLASS (117)/GLA-CLASS (156)

ME/CDI/CNG - Engine control unit

- Basic function
 - Data Analysis
 - Actuation Test
- Support function
 - Activation of fuel pump
 - Teach in of throttle valve stop
 - Teach in of positions for camshafts
 - Resetting of adaptation values

C-CLASS (203)

EZS/EIS - Electronic ignition lock

- Support function
 - Read coding and change if necessary
 - Writing of the VIN

C-CLASS(203)/C-CLASS(204)/CL-CLASS(215)/CL-CLASS(216)/CLK-CLASS(209)/CLS-CLASS(218)/CLS-CLASS(219)/E-CLASS(207)/E-CLASS(211)/E-CLASS(212)/G-CLASS(463)/GL-CLASS(164)/GL-CLASS(166)/GLE-CLASS(292)/R-CLASS(251)/S-CLASS(220)/S-CLASS(221)/SL-CLASS(230)/SLK-CLASS(171)/SLK-CLASS(172)

ETC - Electronic transmission control

- Support function
 - Display adaptation data
 - Reverse gear reset
 - Adaptation of torque converter lockup clutch
 - Performing adaptation (SHIFT)

C-CLASS (203)/CLK-CLASS (209)

SAM-F/SAM-D - Signal acquisition and actuation module front/driver side

- Support function
 - Read coding and change if necessary

- Support function
 - Teach in of drive authorization system

- C-CLASS (203)/CLK-CLASS (209)/G-CLASS (463)
EZS/EIS - Electronic ignition lock
 - Support function
 - Read coding and change if necessary
 - Writing of the VIN

- C-CLASS (203)/G-CLASS (461)
CGW - Central gateway
 - Support function
 - Read coding and change if necessary

- C-CLASS(204)/C-CLASS(205)/CL-CLASS(216)/CLS-CLASS(218)/E-CLASS(207)/E-CLASS(212)/G-CLASS(463)/GLC-CLASS(253)/GL-CLASS(166)/GLE-CLASS(292)/R-CLASS(251)/S-CLASS(217)/S-CLASS(221)/S-CLASS(222)/SL-CLASS(231)/SLK-CLASS(172)
ME/CDI/CNG - Engine control unit
 - Basic function
 - Actuation Test
 - Support function
 - Activate fuel pump
 - Teach in of throttle valve stop
 - Resetting of adaptation values
 - Teach in process after replacement of the combustion engine
 - Enabling of engine start after crash event

- C-CLASS(204)/CL-CLASS(216)/CLK-CLASS(209)/CLS-CLASS(218)/CLS-CLASS(219)/E-CLASS(211)/E-CLASS(212)/GL-CLASS(164)/R-CLASS(251)/S-CLASS(221)/SL-CLASS(230)/SLS-CLASS(197)
ME/CDI/CNG - Engine control unit
 - Support function
 - Teach in drive authorization system

- C-CLASS (204)/CL-CLASS (216)/CLS-CLASS (218)/E-CLASS (207)/E-CLASS (212)/S-CLASS (221)/SLS-CLASS (197)
WSS - Weight sensing system
 - Support function
 - Perform zero point setting

- C-CLASS (204)/CLS-CLASS (218)/E-CLASS (207)/E-CLASS (212)
ME/CDI/CNG - Engine control unit
 - Support function
 - Regeneration of the DPF while driving
 - Injector injection quantity adjustment
 - Teach in of DPF after replacement of CDI control unit
 - Perform teach in process for DPF
 - Teach in of throttle valve stop

- Teach in of Oxidation catalytic converter
- Teach in of Differential pressure sensor (DPF)
- Teach in of Transmission neutral position sensor
- Teach in of Oxygen sensor upstream of catalytic converter
- Teach in of Pressure regulating valve
- Teach in of Quantity control valve
- Quick teach in of values of zero quantity calibration
- Resetting of contamination level of air filter
- Reset values of HFM drift compensation
- Reset values of quantity mean value adaptation
- Activate fuel pump
- Teach in of intake port shutoff

- C-CLASS (204)/CLS-CLASS (218)/E-CLASS (207)/E-CLASS (212)/G-CLASS (463)/GL-CLASS (164)/GL-CLASS (166)/R-CLASS (251)/S-CLASS (221)
SCR - Selective catalytic reduction
 - Support function
 - AdBlue(R) return flow
 - Refill AdBlue
 - Erasing adaptation values after replacement of AdBlue fluid
 - Teach-in process after replacement of component Y129 (AdBlue(R) metering valve)
 - Cancellation of limitation of engine starts/remaining distance
 - Reset of fault message 'Fault in AdBlue system' in instrument cluster

- C-CLASS (204)/CLS-CLASS (218)/E-CLASS (207)/E-CLASS (212)/GL-CLASS (164)/GL-CLASS (166)/R-CLASS (251)/S-CLASS (221)
ME/CDI/CNG - Engine control unit
 - Support function
 - Adjustment of injector injection quantities
 - Regeneration of DPF when driving
 - Teaching in the DPF after replacing the ECU
 - Teach-in after replace of DPF
 - Learning of the throttle valve stop
 - Oxidation catalytic converter
 - Teach-in after replace of Pressure differ. Sensor
 - Teach-in after replace of O2 sensor. upstream of KAT
 - Teach-in after replace of Pressure control valve
 - Activate fuel pump
 - Reset quantity mean value adaptation data
 - Rapid teach-in of zero quantity calibration values
 - Reset values for HFM drift compensation
 - Resetting air filter learn value after replacement

- C-CLASS (204)/CLS-CLASS (218)/E-CLASS (207)/E-CLASS (212)/SLK-CLASS (172)
ME/CDI/CNG - Engine control unit
 - Support function
 - Activate fuel pump

Teach in of throttle valve stop
 Intake manifold swirl flap actuator motor
 Reset of mixture adaptation values
 Acceleration of sensor rotor adaptation

C-CLASS (205)

ME/CDI/CNG - Engine control unit

- Basic function
- Data Analysis
- Actuation Test

CL-CLASS (215)/S-CLASS (220)

EZS/EIS - Electronic ignition lock

- Support function
- Read coding and change if necessary

CL-CLASS (215)/S-CLASS (220)/SL-CLASS (230)/SLR-CLASS (199)

CGW - Central gateway

- Support function
- Read coding and change if necessary

CL-CLASS (215)/S-CLASS (220)/SL-CLASS (230)/SLR-CLASS (199)

EZS/EIS - Electronic ignition lock

- Support function
- Read coding and change if necessary

CL-CLASS (215)/S-CLASS (220)/SL-CLASS (230)/SLR-CLASS (199)

SCM [MRM] - Steering column module

- Basic function
- Data Analysis

CL-CLASS (216)/S-CLASS (221)

AAC - Automatic air conditioning

- Support function
- Normalizing of positioning motors

CL-CLASS (216)/S-CLASS (221)

ABS/ESP - Electronic stability program

- Support function
- Road test
- Erase zero point offset error of steering angle sensor
- Calibration of ESP control unit

CL-CLASS (216)/S-CLASS (221)

Suspension

- Support function
- Level calibration
- Reset compressor operating time

CL-CLASS (216)/S-CLASS (221)

ASSYST PLUS - PLUS Active Service System

- Support function

Confirm overall maintenance
 Reset mistakenly confirmed overall maintenance

CL-CLASS (216)/S-CLASS (221)

DCM-FL - Door control module front left

- Support function
- Denormalize power window
- Normalize power window

CL-CLASS (216)/S-CLASS (221)

DCM-FR - Door control module front right

- Support function
- Denormalize power window
- Normalize power window

CLS-CLASS (219)/E-CLASS (211)

CGW - Central gateway

- Support function
- Read coding and change if necessary

CLS-CLASS (219)/E-CLASS (211)

SAM-F/SAM-D - Signal acquisition and actuation module front/driver side

- Support function
- Read coding and change if necessary

CLS-CLASS (219)/E-CLASS (211)

SAM-P- Passenger-side signal acquisition and actuation module

- Support function
- Read coding and change if necessary

CLS-CLASS (219)/E-CLASS (211)

SAM-R/BSN - Rear signal acquisition and actuation module/Battery sensor

- Support function
- Read coding and change if necessary

CLS-CLASS (219)/E-CLASS (211)/SLK-CLASS (171)

EZS/EIS - Electronic ignition lock

- Support function
- Writing of the VIN

G-CLASS (461)

ME/CDI/CNG - Engine control unit

- Basic function
- Data Analysis

GL-CLASS (164)/MAYBACH (240)/R-CLASS (251)

AB - Airbag

- Support function
- Read coding and change if necessary

GL-CLASS (164)/R-CLASS (251)

EZS/EIS - Electronic ignition lock

- Support function
 - Read coding and change if necessary
 - Writing of the VIN

GL-CLASS (164)/R-CLASS (251)
EZS/EIS - Electronic ignition lock

- Support function
 - Read coding and change if necessary
 - Writing of the VIN

GL-CLASS (164)/R-CLASS (251)
ME/CDI/CNG - Engine control unit

- Basic function
 - Data Analysis

S-CLASS (221)
DCM-RL - Door control module rear left

- Support function
 - Denormalize power window
 - Normalize power window

S-CLASS (221)
DCM-RR - Door control module rear right

- Support function
 - Denormalize power window
 - Normalize power window

Transporter (906)/Transporter (907)
ME/CDI/CNG - Engine control unit

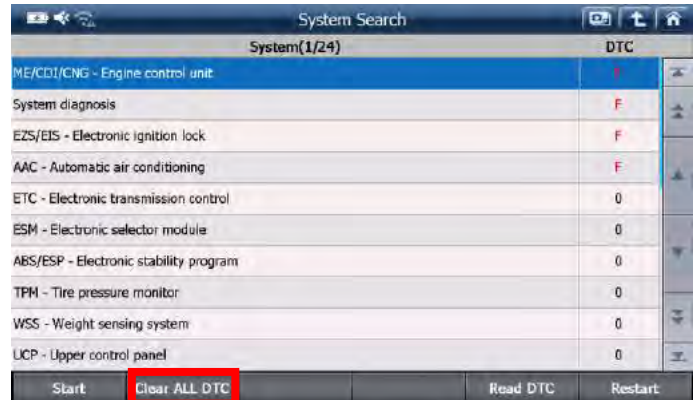
- Basic function
 - Data Analysis
 - Actuation Test

V-CLASS (447)
TPM - Tire pressure monitor

- Basic function
 - Data Analysis

Function improved

- System Search function greatly improved:
- Searching speed accelerated up to 5 times.
 - Applicable for only CAN-Bus type models.
 - G-scan1 is not applicable due to its hardware limitations.
 - New function, **Clear ALL DTC**, added. It literally clears all 'present' DTCs with single button as shown below.



Bug fixed

- ME/CDI/CNG - Engine control unit
- ABS/ESP - Electronic stability program
- SBC - Sensotronic Brake Control
- KG/RFL - KEYLESS GO/Radio frequency locking/Electric central locking

[Back to Index](#)

FIAT

New system added
Autoliv MY06 Airbag

- Basic function
 - DTC Analysis
 - Data Analysis
 - Actuation Test
 - ECU Information Display

Marelli 8DF CF5/EOBD Diesel Injection (1.3)

- Basic function
 - DTC Analysis
 - Data Analysis
 - Actuation Test
 - ECU Information Display
 - Support function
 - Oil change (only for version with DPF)
 - Reset self-learned functions
 - Particle filter replacement (only for version with DPF)
 - Particle filter regeneration (only for version with DPF)
 - Replacement of control unit and injectors
 - Rail pressure sensor replacement
 - Differential pressure sensor replacement (only for version with DPF)
 - Replacement of Lambda sensor
 - Air flow meter sensor replacement
 - Phonic wheel replacement
 - Glow plug preheating circuit test
 - Neutral signal learn
 - Injector programming

Bosch Motronic MeD7.6.2 CF4/EOBD Injection (3.2)

- Basic function
 - DTC Analysis
 - Data Analysis
 - Actuation Test
 - ECU Information Display
- Support function
 - Self-adaptation

Visteon CF4/EOBD Diesel Injection (2.2)

- Basic function
 - DTC Analysis
 - Data Analysis
 - Actuation Test
 - ECU Information Display
- Support function
 - Oil change
 - Reset self-learnt functions
 - High pressure pump replacement
 - Pilot injection learn
 - Injector programming
 - Speed limit

Hitachi MPI injection (EOBD)

- Basic function
 - DTC Analysis
 - Data Analysis
 - Actuation Test
 - ECU Information Display

Bosch Motronic ME7.3H4M EOBD Injection

- Basic function
 - DTC Analysis
 - Data Analysis
 - Actuation Test
 - ECU Information Display
- Support function
 - Self-adaptation reset

Bosch Motronic ME 3.1 EOBD (3.0 V6)

- Basic function
 - DTC Analysis
 - Data Analysis
 - Actuation Test
 - ECU Information Display

Bosch Motronic MeD17.3.1 CF5/EOBD Injection (1.8)

- Basic function
 - DTC Analysis
 - Data Analysis
 - Actuation Test
 - ECU Information Display
- Support function
 - Reset self-learnt functions

- Self-adaptation parameters reset
- Oil change

Bosch EDC16C39 CF5/EOBD Diesel Injection (2.0 16V)

- Basic function
 - DTC Analysis
 - Data Analysis
 - Actuation Test
 - ECU Information Display
- Support function
 - Oil change (only for version with DPF)
 - Reset self-learnt functions
 - Replacement of particulate filter with built-in pre-catalyzer (only for versions with DPF)
 - Particle filter replacement (only for version with DPF)
 - Particle filter regeneration
 - Replacement of control unit and injectors
 - Rail pressure sensor replacement
 - Pre-catalyzer replacement (only for version with DPF)
 - Differential pressure sensor replacement (only for version with DPF)
 - Replacement of Lambda sensor
 - Air flow meter sensor replacement
 - EGR valve replacement
 - Glow plug preheating circuit test
 - Neutral signal learn
 - Injector programming

Marelli 9DF CF6/EOBD Diesel Injection (1.3)

- Basic function
 - DTC Analysis
 - Data Analysis
 - Actuation Test
 - ECU Information Display
- Support function
 - Oil change (only for version with DPF)
 - Reset self-learnt functions
 - Particle filter replacement (only for version with DPF)
 - Particle filter regeneration
 - Replacement of control unit and injectors
 - Rail pressure sensor replacement
 - Differential pressure sensor replacement (only for version with DPF)
 - Replacement of Lambda sensor
 - Air flow meter sensor replacement
 - Low pressure EGR valve learn
 - Phonic wheel replacement
 - Glow plug preheating circuit test
 - Replacement of intelligent alternator (IAM)
 - Clutch pedal learning
 - Neutral signal learn

Magneti Marelli IAW 8GSF CF5/EOBD Injection (0.9)

- Basic function

- DTC Analysis
- Data Analysis
- Actuation Test
- ECU Information Display
- Support function
 - Reset self-learnt functions
 - Self-adaptation parameters reset
 - Oil change
 - Phonic wheel learn reset
 - Throttle position learning
 - Replacement of UniAir module
 - Replacement of timing sensor or cam
 - Replacement of RPM sensor or distribution belt
 - Replacement of oil temperature sensor
 - Replacement of intelligent alternator (IAM)
 - UniAir actuator dispersion correction
 - Neutral signal learn
 - Performance limiting deactivation

TRW Electric Power Steering (2)

- Basic function
 - DTC Analysis
 - Data Analysis
 - ECU Information Display
- Support function
 - Vehicle type learn reset
 - Steering angle calibration

Delphi Electric Steering

- Basic function
 - DTC Analysis
 - Data Analysis
 - ECU Information Display
- Support function
 - Position sensor calibration
 - Steering angle calibration

TRW Airbag 2 (Ep - PROXI)

- Basic function
 - DTC Analysis
 - Data Analysis
 - Actuation Test
 - ECU Information Display

Marelli climate control (Dual zone)

- Basic function
 - DTC Analysis
 - Data Analysis
 - Actuation Test
 - ECU Information Display
 - Support function
 - Flap actuators learning

Lucas EPIC DCU3F Diesel Injection

- Basic function
 - DTC Analysis
 - Data Analysis
 - Actuation Test
 - ECU Information Display

Bug fixed

- Bosch Motronic Me7.9.10 CF5/EOBD Injection (1.4 16V) :
 - Calculation formula error fixed

[Back to Index](#)

ALFA ROMEO

New system added

Autoliv MY06 Airbag

- Basic function
 - DTC Analysis
 - Data Analysis
 - Actuation Test
 - ECU Information Display

Marelli 8DF CF5/EOBD Diesel Injection (1.3)

- Basic function
 - DTC Analysis
 - Data Analysis
 - Actuation Test
 - ECU Information Display
 - Support function
 - Oil change (only for version with DPF)
 - Reset self-learnt functions
 - Particle filter replacement (only for version with DPF)
 - Particle filter regeneration (only for version with DPF)
 - Replacement of control unit and injectors
 - Rail pressure sensor replacement
 - Differential pressure sensor replacement (only for version with DPF)
 - Replacement of Lambda sensor
 - Air flow meter sensor replacement
 - Phonic wheel replacement
 - Glow plug preheating circuit test
 - Neutral signal learn
 - Injector programming

Bosch Motronic MeD7.6.2 CF4/EOBD Injection (3.2)

- Basic function
 - DTC Analysis
 - Data Analysis
 - Actuation Test
 - ECU Information Display
 - Support function
 - Self-adaptation

Visteon CF4/EOBD Diesel Injection (2.2)

- Basic function
 - DTC Analysis
 - Data Analysis
 - Actuation Test
 - ECU Information Display
 - Support function
 - Oil change
 - Reset self-learnt functions
 - High pressure pump replacement
 - Pilot injection learn
 - Injector programming
 - Speed limit
- Hitachi MPI injection (EOBD)**
 - Basic function
 - DTC Analysis
 - Data Analysis
 - Actuation Test
 - ECU Information Display
- Bosch Motronic ME7.3H4M EOBD Injection**
 - Basic function
 - DTC Analysis
 - Data Analysis
 - Actuation Test
 - ECU Information Display
 - Support function
 - Self-adaptation reset
- Bosch Motronic ME 3.1 EOBD (3.0 V6)**
 - Basic function
 - DTC Analysis
 - Data Analysis
 - Actuation Test
 - ECU Information Display
- Bosch Motronic MeD17.3.1 CF5/EOBD Injection (1.8)**
 - Basic function
 - DTC Analysis
 - Data Analysis
 - Actuation Test
 - ECU Information Display
 - Support function
 - Reset self-learnt functions
 - Self-adaptation parameters reset
 - Oil change
- Bosch EDC16C39 CF5/EOBD Diesel Injection (2.0 16V)**
 - Basic function
 - DTC Analysis
 - Data Analysis
 - Actuation Test
 - ECU Information Display
 - Support function
 - Oil change (only for version with DPF)
- Reset self-learnt functions
- Replacement of particulate filter with built-in pre-catalyzer (only for versions with DPF)
- Particle filter replacement (only for version with DPF)
- Particle filter regeneration
- Replacement of control unit and injectors
- Rail pressure sensor replacement
- Pre-catalyzer replacement (only for version with DPF)
- Differential pressure sensor replacement (only for version with DPF)
- Replacement of Lambda sensor
- Air flow meter sensor replacement
- EGR valve replacement
- Glow plug preheating circuit test
- Neutral signal learn
- Injector programming
- Marelli 9DF CF6/EOBD Diesel Injection (1.3)**
 - Basic function
 - DTC Analysis
 - Data Analysis
 - Actuation Test
 - ECU Information Display
 - Support function
 - Oil change (only for version with DPF)
 - Reset self-learnt functions
 - Particle filter replacement (only for version with DPF)
 - Particle filter regeneration
 - Replacement of control unit and injectors
 - Rail pressure sensor replacement
 - Differential pressure sensor replacement (only for version with DPF)
 - Replacement of Lambda sensor
 - Air flow meter sensor replacement
 - Low pressure EGR valve learn
 - Phonic wheel replacement
 - Glow plug preheating circuit test
 - Replacement of intelligent alternator (IAM)
 - Clutch pedal learning
 - Neutral signal learn
 - Injector programming
- Magneti Marelli IAW 8GSF CF5/EOBD Injection (0.9)**
 - Basic function
 - DTC Analysis
 - Data Analysis
 - Actuation Test
 - ECU Information Display
 - Support function
 - Reset self-learnt functions
 - Self-
 - Oil change
 - Phonic wheel learn reset
 - Throttle position learning

Replacement of UniAir module
 Replacement of timing sensor or cam
 Replacement of RPM sensor or distribution belt
 Replacement of oil temperature sensor
 Replacement of intelligent alternator (IAM)
 UniAir actuator dispersion correction
 Neutral signal learn
 Performance limiting deactivation

TRW Electric Power Steering (2)

- Basic function
 - DTC Analysis
 - Data Analysis
 - ECU Information Display
- Support function
 - Vehicle type learn reset
 - Steering angle calibration

Delphi Electric Steering

- Basic function
 - DTC Analysis
 - Data Analysis
 - ECU Information Display
- Support function
 - Position sensor calibration
 - Steering angle calibration

TRW Airbag 2 (Ep - PROXI)

- Basic function
 - DTC Analysis
 - Data Analysis
 - Actuation Test
 - ECU Information Display

Marelli climate control (Dual zone)

- Basic function
 - DTC Analysis
 - Data Analysis
 - Actuation Test
 - ECU Information Display
- Support function
 - Flap actuators learning

Lucas EPIC DCU3F Diesel Injection

- Basic function
 - DTC Analysis
 - Data Analysis
 - Actuation Test
 - ECU Information Display

Bug fixed

Bosch Motronic Me7.9.10 CF5/EOBD Injection (1.4 16V):
 - Calculation formula error fixed

[Back to Index](#)

LANCIA

New system added

Autoliv MY06 Airbag

- Basic function
 - DTC Analysis
 - Data Analysis
 - Actuation Test
 - ECU Information Display

Marelli 8DF CF5/EOBD Diesel Injection (1.3)

- Basic function
 - DTC Analysis
 - Data Analysis
 - Actuation Test
 - ECU Information Display
- Support function
 - Oil change (only for version with DPF)
 - Reset self-learnt functions
 - Particle filter replacement (only for version with DPF)
 - Particle filter regeneration (only for version with DPF)
 - Replacement of control unit and injectors
 - Rail pressure sensor replacement
 - Differential pressure sensor replacement (only for version with DPF)
 - Replacement of Lambda sensor
 - Air flow meter sensor replacement
 - Phonic wheel replacement
 - Glow plug preheating circuit test
 - Neutral signal learn
 - Injector programming

Bosch Motronic MeD7.6.2 CF4/EOBD Injection (3.2)

- Basic function
 - DTC Analysis
 - Data Analysis
 - Actuation Test
 - ECU Information Display
- Support function
 - Self-adaptation

Visteon CF4/EOBD Diesel Injection (2.2)

- Basic function
 - DTC Analysis
 - Data Analysis
 - Actuation Test
 - ECU Information Display
- Support function
 - Oil change
 - Reset self-learnt functions
 - High pressure pump replacement
 - Pilot injection learn

Injector programming
 Speed limit

Hitachi MPI injection (EOBD)

- Basic function
 - DTC Analysis
 - Data Analysis
 - Actuation Test
 - ECU Information Display

Bosch Motronic ME7.3H4M EOBD Injection

- Basic function
 - DTC Analysis
 - Data Analysis
 - Actuation Test
 - ECU Information Display
- Support function
 - Self-adaptation reset

Bosch Motronic ME 3.1 EOBD (3.0 V6)

- Basic function
 - DTC Analysis
 - Data Analysis
 - Actuation Test
 - ECU Information Display

Bosch Motronic MeD17.3.1 CF5/EOBD Injection (1.8)

- Basic function
 - DTC Analysis
 - Data Analysis
 - Actuation Test
 - ECU Information Display
- Support function
 - Reset self-learnt functions
 - Self-adaptation parameters reset
 - Oil change

Bosch EDC16C39 CF5/EOBD Diesel Injection (2.0 16V)

- Basic function
 - DTC Analysis
 - Data Analysis
 - Actuation Test
 - ECU Information Display
 - Support function
 - Oil change (only for version with DPF)
 - Reset self-learnt functions
 - Replacement of particulate filter with built-in pre-catalyzer (only for versions with DPF)
 - Particle filter replacement (only for version with DPF)
 - Particle filter regeneration
 - Replacement of control unit and injectors
 - Rail pressure sensor replacement
 - Pre-catalyzer replacement (only for version with DPF)
 - Differential pressure sensor replacement (only for version with DPF)

Replacement of Lambda sensor
 Air flow meter sensor replacement
 EGR valve replacement
 Glow plug preheating circuit test
 Neutral signal learn
 Injector programming

Marelli 9DF CF6/EOBD Diesel Injection (1.3)

- Basic function
 - DTC Analysis
 - Data Analysis
 - Actuation Test
 - ECU Information Display
- Support function
 - Oil change (only for version with DPF)
 - Reset self-learnt functions
 - Particle filter replacement (only for version with DPF)
 - Particle filter regeneration
 - Replacement of control unit and injectors
 - Rail pressure sensor replacement
 - Differential pressure sensor replacement (only for version with DPF)
 - Replacement of Lambda sensor
 - Air flow meter sensor replacement
 - Low pressure EGR valve learn
 - Phonic wheel replacement
 - Glow plug preheating circuit test
 - Replacement of intelligent alternator (IAM)
 - Clutch pedal learning
 - Neutral signal learn
 - Injector programming

Magneti Marelli IAW 8GSF CF5/EOBD Injection (0.9)

- Basic function
 - DTC Analysis
 - Data Analysis
 - Actuation Test
 - ECU Information Display
- Support function
 - Reset self-learnt functions
 - Self-
 - Oil change
 - Phonic wheel learn reset
 - Throttle position learning
 - Replacement of UniAir module
 - Replacement of timing sensor or cam
 - Replacement of RPM sensor or distribution belt
 - Replacement of oil temperature sensor
 - Replacement of intelligent alternator (IAM)
 - UniAir actuator dispersion correction
 - Neutral signal learn
 - Performance limiting deactivation

TRW Electric Power Steering (2)

- Basic function

- DTC Analysis
- Data Analysis
- ECU Information Display
- Support function
- Vehicle type learn reset
- Steering angle calibration

Delphi Electric Steering

- Basic function
- DTC Analysis
- Data Analysis
- ECU Information Display
- Support function
- Position sensor calibration
- Steering angle calibration

TRW Airbag 2 (Ep - PROXI)

- Basic function
- DTC Analysis
- Data Analysis
- Actuation Test
- ECU Information Display

Marelli climate control (Dual zone)

- Basic function
- DTC Analysis
- Data Analysis
- Actuation Test
- ECU Information Display
- Support function
- Flap actuators learning

Lucas EPIC DCU3F Diesel Injection

- Basic function
- DTC Analysis
- Data Analysis
- Actuation Test
- ECU Information Display

Bug fixed

Bosch Motronic Me7.9.10 CF5/EObd Injection (1.4 16V) :

- Calculation formula error fixed

[Back to Index](#)

PEUGEOT

308 AL4 AT /DTC Analysis Bug fixed

BIPPER Engine (HDI_8DF3) Bug fixed

407 ESP/Steering wheel angle sensor calibration

Function improved

301 Engine (9HP-DV6DTEd-92 CV) System added

- Basic function
- DTC Analysis
- Data Analysis
- Actuation Test
- ECU Information
- Special Function
- Forced Regeneration Of The Particle Filter Vehicle Stationary
- Change of EGR Valve
- Replacement Of The EGR Exchanger
- Change Of Air Mixer
- Replacement Of The Turbo
- Replacement Of The Additive Reservoir Of Pump Or Pipes
- Replacement Of The High Pressure Pump Or Regulation Valve
- Replacement Of The Exhaust Manifold
- Replacement Of The Cylinder Head
- Replacement Of The Diesel High Pressure Rail
- Replacement Of The Particle Emission Filter
- Filling Of The Diesel Additive Tank
- Replacement Of The Oxygen Sensor

308 Engine (RHF DCM 3.4)

- Special Function added
- Forced regeneration vehicle stationary
- Forced Regeneration Of The Particle Filter Vehicle moving
- Filling of the diesel additive adding reservoir
- Replacement of the diesel additive reservoir of the pump or of the pipes
- Replacement of the particle emission filter
- EGR electrovalve replacement
- Replacement of the turbo
- Air flow sensor replacement
- Replacement of the differential pressure sensor
- Replacement of the high pressure pump or the flow regulation valve
- Replacement of the additive reservoir of the pump or of the pipes
- Replacement of the particle emission filter
- Initialization of the EGR electrovalve
- Initialization of the turbo
- Initialization of the differential pressure sensor
- Initialization of the high pressure pump
- Initialization of the air flowmeter

[Back to Index](#)

CITROEN

C3 (A51) Vehicle Added

Engine (MEV17_4_2 EP6C)

- Basic function
 - DTC Analysis
 - Data Analysis
 - Actuation Test
 - ECU Information
- Special Function
 - Initialization of auto adaptative
 - Motorised throttle unit
 - Upstream and downstream oxygen sensors
 - Accelerator pedal sensor
 - Injectors
 - Catalytic converter
 - Fuel sender/pump module
 - Inlet and exhaust camshaft phase sensor
 - Inlet and exhaust camshaft dephasing electrovalve
 - Inlet pressure sensor
 - Variable valve lift motor
 - Variable valve lift system position sensor
 - Canister discharge electrovalve
 - Timing

Engine (MEV17_4_2 EP3C)

- Basic function
 - DTC Analysis
 - Data Analysis
 - Actuation Test
 - ECU Information
- Special Function
 - Initialization of auto adaptative
 - Motorized throttle unit
 - Upstream and downstream oxygen sensors
 - Accelerator pedal sensor
 - Injectors
 - Catalytic converter
 - Fuel sender/pump module
 - Inlet and exhaust camshaft phase sensor
 - Inlet and exhaust camshaft dephasing electrovalve
 - Inlet pressure sensor
 - Variable valve lift motor
 - Variable valve lift system position sensor
 - Canister discharge electrovalve
 - Timing

Engine (MEV17_4_2 EP3CM)

- Basic function
 - DTC Analysis
 - Data Analysis
 - Actuation Test

- ECU Information
- Special Function
 - Initialization of auto adaptative
 - Motorized throttle unit
 - Upstream and downstream oxygen sensors
 - Accelerator pedal sensor
 - Injectors
 - Catalytic converter
 - Fuel sender/pump module
 - Inlet and exhaust camshaft phase sensor
 - Inlet and exhaust camshaft dephasing electrovalve
 - Inlet pressure sensor
 - Variable valve lift motor
 - Variable valve lift system position sensor
 - Canister discharge electrovalve
 - Timing

Engine (MEV17_4_2 EP3CGAZ)

- Basic function
 - DTC Analysis
 - Data Analysis
 - Actuation Test
 - ECU Information
- Special Function
 - Initialization of auto adaptative
 - Motorized throttle unit
 - Upstream and downstream oxygen sensors
 - Accelerator pedal sensor
 - Injectors
 - Catalytic converter
 - Fuel sender/pump module
 - Inlet and exhaust camshaft phase sensor
 - Inlet and exhaust camshaft dephasing electrovalve
 - Inlet pressure sensor
 - Variable valve lift motor
 - Variable valve lift system position sensor
 - Canister discharge electrovalve
 - Timing

Engine (MEV17_4_EURO5 5FS)

- Basic function
 - DTC Analysis
 - Data Analysis
 - Actuation Test
 - ECU Information
- Special Function
 - Initialization of auto adaptative
 - Motorized throttle unit
 - Upstream and downstream oxygen sensors
 - Accelerator pedal sensor
 - Injectors
 - Catalytic converter
 - Fuel sender/pump module
 - Inlet and exhaust camshaft phase sensor
 - Inlet and exhaust camshaft dephasing electrovalve



G-scan & G-scan2 Distributor Bulletin

2017 September Update Details

Sep 05, 2017

- Inlet pressure sensor
 - Variable valve lift motor
 - Variable valve lift system position sensor
 - Canister discharge electrovalve
 - Timing
- Engine (MEV17_4_EURO5 8FR)
- Basic function
 - DTC Analysis
 - Data Analysis
 - Actuation Test
 - ECU Information
 - Special Function
 - Initialization of auto adaptative
 - Motorized throttle unit
 - Upstream and downstream oxygen sensors
 - Accelerator pedal sensor
 - Injectors
 - Catalytic converter
 - Fuel sender/pump module
 - Inlet and exhaust camshaft phase sensor
 - Inlet and exhaust camshaft dephasing electrovalve
 - Inlet pressure sensor
 - Variable valve lift motor
 - Variable valve lift system position sensor
 - Canister discharge electrovalve
 - Timing
- Engine (MEV17_4_EURO5 8FP)
- Basic function
 - DTC Analysis
 - Data Analysis
 - Actuation Test
 - ECU Information
 - Special Function
 - Initialization of auto adaptative
 - Motorized throttle unit
 - Upstream and downstream oxygen sensors
 - Accelerator pedal sensor
 - Injectors
 - Catalytic converter
 - Fuel sender/pump module
 - Inlet and exhaust camshaft phase sensor
 - Inlet and exhaust camshaft dephasing electrovalve
 - Inlet pressure sensor
 - Variable valve lift motor
 - Variable valve lift system position sensor
 - Canister discharge electrovalve
 - Timing
- Engine (9HX-DV6ATED4-90CV)
- Basic function
 - DTC Analysis
 - Data Analysis
 - Actuation Test
- ECU Information
- Special Function
 - Change of EGR valve
 - EGR mixer butterfly replacement
- Engine (EDC17C10 9HP)
- Basic function
 - DTC Analysis
 - Data Analysis
 - Actuation Test
 - ECU Information
 - Special Function
 - Forced Regeneration Of The Particle Filter Vehicle
- Stationary
- Change of EGR Valve
 - Replacement Of The EGR Exchanger
 - Change Of Air Mixer
 - Replacement Of The Turbo
 - Replacement Of The Additive Reservoir Of Pump Or
- Pipes
- Replacement Of The High Pressure Pump Or Regulation Valve
 - Replacement Of The Exhaust Manifold
 - Replacement Of The Cylinder Head
 - Replacement Of The Diesel High Pressure Rail
 - Replacement Of The Particle Emission Filter
 - Filling Of The Diesel Additive Tank
 - Replacement Of The Oxygen Sensor
- Engine (EDC17C10 8HR)
- Basic function
 - DTC Analysis
 - Data Analysis
 - Actuation Test
 - ECU Information
 - Special Function
 - Forced Regeneration Of The Particle Filter Vehicle
- Stationary
- Change of EGR Valve
 - Replacement Of The EGR Exchanger
 - Change Of Air Mixer
 - Replacement Of The Turbo
 - Replacement Of The Additive Reservoir Of Pump Or
- Pipes
- Replacement Of The High Pressure Pump Or Regulation Valve
 - Replacement Of The Exhaust Manifold
 - Replacement Of The Cylinder Head
 - Replacement Of The Diesel High Pressure Rail
 - Replacement Of The Particle Emission Filter
 - Filling Of The Diesel Additive Tank
 - Replacement Of The Oxygen Sensor
- Engine (EDC17C10_BR2 9HP - DV6DTE4 - 92 CV)
- Basic function

<ul style="list-style-type: none"> DTC Analysis Data Analysis Actuation Test ECU Information - Special Function <ul style="list-style-type: none"> Forced Regeneration Of The Particle Filter Vehicle Stationary Change of EGR Valve Replacement Of The EGR Exchanger Change Of Air Mixer Replacement Of The Turbo Replacement Of The Additive Reservoir Of Pump Or Pipes Replacement Of The High Pressure Pump Or Regulation Valve Replacement Of The Exhaust Manifold Replacement Of The Cylinder Head Replacement Of The Diesel High Pressure Rail Replacement Of The Particle Emission Filter Filling Of The Diesel Additive Tank Replacement Of The Oxygen Sensor 	<ul style="list-style-type: none"> Replacement Of The Particle Emission Filter Filling Of The Diesel Additive Tank
<p>Engine (EDC17C10_BR2 9HJ - DV6DTEDM - 90 CV)</p> <ul style="list-style-type: none"> - Basic function <ul style="list-style-type: none"> DTC Analysis Data Analysis Actuation Test ECU Information - Special Function <ul style="list-style-type: none"> Change of EGR Valve Replacement Of The EGR Exchanger Replacement Of The Turbo Replacement Of The High Pressure Pump Or Regulation Valve Replacement Of The Exhaust Manifold Replacement Of The Cylinder Head Replacement Of The Diesel High Pressure Rail Replacement Of The Particle Emission Filter Filling Of The Diesel Additive Tank 	<p>Engine (EDC17C10_BR2 8HR - DV4CTED - 70 CV)</p> <ul style="list-style-type: none"> - Basic function <ul style="list-style-type: none"> DTC Analysis Data Analysis Actuation Test ECU Information - Special Function <ul style="list-style-type: none"> Change of EGR Valve Replacement Of The EGR Exchanger Replacement Of The Turbo Replacement Of The High Pressure Pump Or Regulation Valve Replacement Of The Exhaust Manifold Replacement Of The Cylinder Head Replacement Of The Diesel High Pressure Rail Replacement Of The Particle Emission Filter Filling Of The Diesel Additive Tank
<p>Engine (EDC17C10_BR2 9HK - DV6ETEDM - 75 CV)</p> <ul style="list-style-type: none"> - Basic function <ul style="list-style-type: none"> DTC Analysis Data Analysis Actuation Test ECU Information - Special Function <ul style="list-style-type: none"> Change of EGR Valve Replacement Of The EGR Exchanger Replacement Of The Turbo Replacement Of The High Pressure Pump Or Regulation Valve Replacement Of The Exhaust Manifold Replacement Of The Cylinder Head Replacement Of The Diesel High Pressure Rail 	<p>Engine (EDC17C10_BR2 8HP - DV4CTED - 70 CV)</p> <ul style="list-style-type: none"> - Basic function <ul style="list-style-type: none"> DTC Analysis Data Analysis Actuation Test ECU Information - Special Function <ul style="list-style-type: none"> Change of EGR Valve Replacement Of The EGR Exchanger Replacement Of The Turbo Replacement Of The High Pressure Pump Or Regulation Valve Replacement Of The Exhaust Manifold Replacement Of The Cylinder Head Replacement Of The Diesel High Pressure Rail Replacement Of The Particle Emission Filter Filling Of The Diesel Additive Tank
<ul style="list-style-type: none"> Replacement Of The Diesel High Pressure Rail 	<p>Engine (V341 HFV)</p> <ul style="list-style-type: none"> - Basic function <ul style="list-style-type: none"> DTC Analysis Data Analysis Actuation Test
<ul style="list-style-type: none"> Replacement Of The Diesel High Pressure Rail 	<p>Engine (V341 KFT)</p> <ul style="list-style-type: none"> - Basic function <ul style="list-style-type: none"> DTC Analysis Data Analysis Actuation Test ECU Information
<ul style="list-style-type: none"> Replacement Of The Diesel High Pressure Rail 	<p>Engine (J34P KFW)</p> <ul style="list-style-type: none"> - Basic function



G-scan & G-scan2 Distributor Bulletin

2017 September Update Details

Sep 05, 2017

- DTC Analysis
 - Data Analysis
 - Actuation Test
 - ECU Information
- Engine (J34P KFV)
- Basic function
 - DTC Analysis
 - Data Analysis
 - Actuation Test
 - ECU Information
- Engine (HDI_SID807 9HR)
- Basic function
 - DTC Analysis
 - Data Analysis
 - Actuation Test
 - ECU Information
 - Special Function
 - Forced regeneration vehicle stationary
 - Change of high pressure pump with its fuel flow regulator
 - Replacement of the EGR valve
 - Change of air mixer
 - Replacement of the turbo
 - Replacement of the air flow sensor
 - Replacement of the engine block without the air flow sensor
 - Replacement of the engine block with the air flow sensor
 - Replacement of the additive reservoir of the pump or of the pipes
 - Replacement of the particle emission filter
 - Replacement of the oxygen sensor
- Engine (HDI_SID807 9HL)
- Basic function
 - DTC Analysis
 - Data Analysis
 - Actuation Test
 - ECU Information
 - Special Function
 - Forced regeneration vehicle stationary
 - Change of high pressure pump with its fuel flow regulator
 - Replacement of the EGR valve
 - Change of air mixer
 - Replacement of the turbo
 - Replacement of the air flow sensor
 - Replacement of the engine block without the air flow sensor
 - Replacement of the engine block with the air flow sensor
 - Replacement of the additive reservoir of the pump or of the pipes
- Replacement of the particle emission filter
- Replacement of the oxygen sensor
- Engine (HDI_SID807_BR2 9HR)
- Basic function
 - DTC Analysis
 - Data Analysis
 - Actuation Test
 - ECU Information
 - Special Function
 - Forced regeneration vehicle stationary
 - Replacement of the EGR valve
 - Change of air mixer
 - Replacement of the turbo
 - Replacement of the engine block without the air flow sensor
 - Replacement of the engine block with the air flow sensor
 - Replacement of the additive reservoir of the pump or of the pipes
 - Replacement of the particle emission filter
 - Replacement of the oxygen sensor
 - Temporary reactivation of the stop and start function (For a maximum distance of 10 km)
 - Replacement of diesel high pressure pump
 - Replacement of the fuel flow regulator
 - Replacement of the EGR exchanger
 - Change to the air flowmeter
 - Filling of the diesel additive adding reservoir
 - Replacement of the ancillary drive belt
 - Replacement of the exhaust manifold
- Engine (HDI_SID807_BR2 9HL)
- Basic function
 - DTC Analysis
 - Data Analysis
 - Actuation Test
 - ECU Information
 - Special Function
 - Forced regeneration vehicle stationary
 - Replacement of the EGR valve
 - Change of air mixer
 - Replacement of the turbo
 - Replacement of the engine block without the air flow sensor
 - Replacement of the engine block with the air flow sensor
 - Replacement of the additive reservoir of the pump or of the pipes
 - Replacement of the particle emission filter
 - Replacement of the oxygen sensor
 - Temporary reactivation of the stop and start function (For a maximum distance of 10 km)
 - Replacement of diesel high pressure pump
 - Replacement of the fuel flow regulator

<ul style="list-style-type: none"> Replacement of the EGR exchanger Change to the air flowmeter Filling of the diesel additive adding reservoir Replacement of the ancillary drive belt Replacement of the exhaust manifold 	<ul style="list-style-type: none"> Gearbox ECU (CFC300P) <ul style="list-style-type: none"> - Basic function DTC Analysis Data Analysis Actuation Test ECU Information
<p>Engine (VD46)</p> <ul style="list-style-type: none"> - Basic function <ul style="list-style-type: none"> DTC Analysis Data Analysis Actuation Test ECU Information - Special Function <ul style="list-style-type: none"> Replacement of the exhaust manifold Initialization of the auto adaptive values Temporary reactivation of the stop and start function (for a maximum distance of 10 km) Work on the ancillaries' battery Replacement of one or more petrol injectors Replacement of the inlet camshaft dephaser Replacement of the exhaust camshaft dephaser Cylinder head replacement Replacement of the turbocharger Replacement of the ancillary's battery Replacement of starter motor Replacement of the clutch Replacement of the alternator Replacement of the turbocharging pressure regulation valve Replacement of the engine flywheel Replacement of the accelerator pedal Replacement of the motorized butterfly housing 	<ul style="list-style-type: none"> Gearbox ECU (MAPS_UDS) <ul style="list-style-type: none"> - Basic function DTC Analysis Data Analysis Actuation Test ECU Information Multiplexed additive adding pump ECU <ul style="list-style-type: none"> - Basic function DTC Analysis Data Analysis Actuation Test ECU Information Built-In system interface <ul style="list-style-type: none"> - Basic function DTC Analysis ECU Information ABS/ESP (ABS MK 70.2) <ul style="list-style-type: none"> - Basic function DTC Analysis Data Analysis Actuation Test ECU Information
<p>Gearbox ECU (BVA_AL4)</p> <ul style="list-style-type: none"> - Basic function <ul style="list-style-type: none"> DTC Analysis Data Analysis Actuation Test ECU Information 	<ul style="list-style-type: none"> ABS/ESP (ABS MK100) <ul style="list-style-type: none"> - Basic function DTC Analysis Data Analysis Actuation Test ECU Information - Special Function <ul style="list-style-type: none"> Bleeding of the hydraulic block ABS MK100
<p>Gearbox ECU (BVMP_MA)</p> <ul style="list-style-type: none"> - Basic function <ul style="list-style-type: none"> DTC Analysis Data Analysis Actuation Test ECU Information - Special Function <ul style="list-style-type: none"> Sequence of programming operations (gearbox and clutch actuators) Gearbox actuator programming operations Clutch actuator programming operations Initialization of the gearbox actuator Setting of the gearbox actuator to the removal position Setting of the gearbox actuator to the fitting position 	<ul style="list-style-type: none"> ABS/ESP (ESP_MK100) <ul style="list-style-type: none"> - Basic function DTC Analysis Data Analysis Actuation Test ECU Information - Special Function <ul style="list-style-type: none"> Bleeding of the hydraulic block ESP MK100 Calibration of the gyrometer / accelerometer sensor Replacement of the ESP ECU - Basic function

Data Analysis Actuation Test ECU Information	C5 Vehicle Added
Rain and light sensor (PLUIE_LUMINOSITE) - Basic function DTC Analysis ECU Information	Built-in systems interface - Basic function DTC Analysis Data Analysis Actuation Test ECU Information - Special Function Resetting to zero Programming of the Confidential Code of the BSI Programming of keys
High frequency receiver (RHF) - Basic function DTC Analysis Data Analysis ECU Information	Instrument panel - Basic function DTC Analysis Data Analysis Actuation Test ECU Information
Service module independent telematic unit (BTA_2) - Basic function DTC Analysis Data Analysis Actuation Test ECU Information - Special Function Configuration of the vehicle's electrical architecture	Parking aid - Basic function DTC Analysis Data Analysis Actuation Test ECU Information
Hands-free starting access electronic module (BML) - Basic function DTC Analysis Data Analysis Actuation Test ECU Information	CD player - Basic function DTC Analysis Data Analysis Actuation Test ECU Information
Electronic key reader (LCE) - Basic function DTC Analysis Data Analysis ECU Information	Alarm - Basic function DTC Analysis Actuation Test ECU Information - Special Function Alarm Configuration
Electric steering lock (AVE) - Basic function DTC Analysis Data Analysis Actuation Test ECU Information	Switch module at the steering wheel - Basic function DTC Analysis Data Analysis ECU Information
Seat driver position memory module (BDMC) - Basic function DTC Analysis Data Analysis Actuation Test ECU Information	Airbags - Basic function DTC Analysis ECU Information
Battery charge status unit (BECB_GEN2) - Basic function Data Analysis ECU Information	Petrol engine (2.0L RFN MM48P)



G-scan & G-scan2 Distributor Bulletin

2017 September Update Details

Sep 05, 2017

- Basic function
 - DTC Analysis
 - Data Analysis
 - Actuation Test
 - ECU Information
 - Special Function
 - Initializing the auto adaptive
- Petrol engine (RFN MM6LP)
- Basic function
 - DTC Analysis
 - Data Analysis
 - Actuation Test
 - ECU Information
- Petrol engine (3.0L XFX BOSCH ME746)
- Basic function
 - DTC Analysis
 - Data Analysis
 - Actuation Test
 - ECU Information
 - Special Function
 - Initializing the auto adaptive
 - Configuration
- Petrol engine (1.8L 6FZ SAGEM S2000P)
- Basic function
 - DTC Analysis
 - Data Analysis
 - Actuation Test
 - ECU Information
 - Special Function
 - Initializing the auto adaptive
 - Configuration View Only
- Petrol engine (6FZ SAGEM S2000PM1)
- Basic function
 - DTC Analysis
 - Data Analysis
 - Actuation Test
 - ECU Information
- Diesel engine (2.2 L 4HX BOSCH EDC15C2)
- Basic function
 - DTC Analysis
 - Data Analysis
 - Actuation Test
 - ECU Information
- Diesel engine (2.0 L RHY BOSCH EDC15C2)
- Basic function
 - DTC Analysis
 - Data Analysis
 - Actuation Test
 - ECU Information
- Diesel engine (2.0 L RHZ BOSCH EDC15C2)
- Basic function
 - DTC Analysis
 - Data Analysis
 - Actuation Test
 - ECU Information
- Diesel engine (2.0 L RHS BOSCH EDC15C2)
- Basic function
 - DTC Analysis
 - Data Analysis
 - Actuation Test
 - ECU Information
- Diesel engine (RHY SIEMENS SID801)
- Basic function
 - DTC Analysis
 - Data Analysis
 - Actuation Test
 - ECU Information
- Anti-lock brake system (ABS MK60)
- Basic function
 - DTC Analysis
 - Data Analysis
 - Actuation Test
 - ECU Information
- Anti-lock brake system (ESP MK60)
- Basic function
 - DTC Analysis
 - Data Analysis
 - Actuation Test
 - ECU Information
- Gearbox (Auto gearbox AL4)
- Basic function
 - DTC Analysis
 - Data Analysis
 - Actuation Test
 - ECU Information
 - Special Function
 - AT Initializing the autoadaptive
 - Oil wear counter
- Gearbox ECU (4HP20)
- Basic function
 - DTC Analysis
 - Data Analysis
 - Actuation Test
 - ECU Information
 - Special Function
 - Initializing the auto adaptive
- Display



G-scan & G-scan2 Distributor Bulletin

2017 September Update Details

Sep 05, 2017

- Basic function DTC Analysis	Initialization of auto adaptative
Radio	Engine (5FH MEV17.4.2 EURO5)
- Basic function DTC Analysis Data Analysis Actuation Test ECU Information	- Basic function DTC Analysis Data Analysis Actuation Test ECU Information - Special Function Initialization of auto adaptative
Driving school	Engine (5FV MED 17.4.2 EURO5)
- Basic function DTC Analysis Data Analysis Actuation Test ECU Information	- Basic function DTC Analysis Data Analysis Actuation Test ECU Information - Special Function Initialization of auto adaptative
Rain sunlight sensor	Engine (5FN MED17.4.2 EURO5)
- Basic function DTC Analysis ECU Information	- Basic function DTC Analysis Data Analysis Actuation Test ECU Information - Special Function Initialization of auto adaptative
C5(X7) Vehicle Added	Engine (5FM MED17.4.2 EURO5)
Engine (9HP-DV6DTED-92 CV)	- Basic function DTC Analysis Data Analysis Actuation Test ECU Information - Special Function Initialization of auto adaptative
- Basic function DTC Analysis Data Analysis Actuation Test ECU Information	Engine (5FE MED17.4.2 EURO5)
- Special Function Forced Regeneration Of The Particle Filter Vehicle Stationary Change of EGR Valve Replacement Of The EGR Exchanger Change Of Air Mixer Replacement Of The Turbo Replacement Of The Additive Reservoir Of Pump Or Pipes Replacement Of The High Pressure Pump Or Regulation Valve Replacement Of The Exhaust Manifold Replacement Of The Cylinder Head Replacement Of The Diesel High Pressure Rail Replacement Of The Particle Emission Filter Filling Of The Diesel Additive Tank Replacement Of The Oxygen Sensor	- Basic function DTC Analysis Data Analysis Actuation Test ECU Information - Special Function Initialization of auto adaptative
Engine (5FS MEV17.4.2 EURO5)	Engine (5FC MED17.4.2 EURO5)
- Basic function DTC Analysis Data Analysis Actuation Test ECU Information	- Basic function Data Analysis Actuation Test ECU Information - Special Function Initialization of auto adaptative
- Special Function	

<p>Engine (SID201 UHZ)</p> <ul style="list-style-type: none"> - Basic function <ul style="list-style-type: none"> DTC Analysis Data Analysis Actuation Test ECU Information - Special Function <ul style="list-style-type: none"> Forced Regeneration Of The Particle Filter Vehicle Stationary Change of EGR Valve Replacement Of The Additive Reservoir Of Pump Or Pipes <p>Replacement Of The Particle Emission Filter</p> <p>Filling Of The Additive Reservoir</p> <p>Top Up Diesel Additive Tank</p> <p>Replacement of diesel additive tank and fuel tank</p> <p>Engine (RHR DCM 3.4)</p> <ul style="list-style-type: none"> - Basic function <ul style="list-style-type: none"> DTC Analysis Data Analysis Actuation Test ECU Information - Special Function <ul style="list-style-type: none"> Forced regeneration vehicle stationary Replacement of the turbo Replacement of the additive reservoir of the pump or of the pipes Replacement of the particle emission filter Filling of the diesel additive adding reservoir Forced Regeneration Of The Particle Filter Vehicle moving Replacement of the diesel additive reservoir of the pump or of the pipes EGR electrovalve replacement Air flow sensor replacement Replacement of the differential pressure sensor Replacement of the high pressure pump or the flow regulation valve Initialization of the EGR electrovalve Initialization of the turbo Initialization of the differential pressure sensor Initialization of the high pressure pump Initialization of the air flowmeter <p>Engine (RHF DCM 3.4)</p> <ul style="list-style-type: none"> - Basic function <ul style="list-style-type: none"> DTC Analysis Data Analysis Actuation Test ECU Information - Special Function <ul style="list-style-type: none"> Forced regeneration vehicle stationary Replacement of the turbo 	<ul style="list-style-type: none"> Replacement of the additive reservoir of the pump or of the pipes Replacement of the particle emission filter Filling of the diesel additive adding reservoir Forced Regeneration Of The Particle Filter Vehicle moving Replacement of the diesel additive reservoir of the pump or of the pipes EGR electrovalve replacement Air flow sensor replacement Replacement of the differential pressure sensor Replacement of the high pressure pump or the flow regulation valve Initialization of the EGR electrovalve Initialization of the turbo Initialization of the differential pressure sensor Initialization of the high pressure pump Initialization of the air flowmeter <p>Engine (RHH DCM 3.5)</p> <ul style="list-style-type: none"> - Basic function <ul style="list-style-type: none"> DTC Analysis Data Analysis Actuation Test ECU Information - Special Function <ul style="list-style-type: none"> Forced Regeneration Of The Particle Filter Vehicle Stationary Change of EGR Valve Replacement Of The Additive Reservoir Of Pump Or Pipes Replacement Of The Particle Emission Filter Filling Of The Additive Reservoir Top Up Diesel Additive Tank Replacement of diesel additive tank and fuel tank <p>Engine (EDC17CP11 X8Z)</p> <ul style="list-style-type: none"> - Basic function <ul style="list-style-type: none"> DTC Analysis Data Analysis Actuation Test ECU Information <p>Engine (HDI_SID807_BR2 9HL)</p> <ul style="list-style-type: none"> Basic function <ul style="list-style-type: none"> DTC Analysis Data Analysis Actuation Test ECU Information - Special Function <ul style="list-style-type: none"> Forced regeneration vehicle stationary Change of high pressure pump with its fuel flow regulator Replacement of the EGR valve Change of air mixer
---	--

Replacement of the turbo
 Replacement of the air flow sensor
 Replacement of the engine block without the air flow sensor
 Replacement of the engine block with the air flow sensor
 Replacement of the additive reservoir of the pump or of the pipes
 Replacement of the particle emission filter
 Replacement of the oxygen sensor

Engine (HDI_SID807_BR2 9HR)

- Basic function
 - DTC Analysis
 - Data Analysis
 - Actuation Test
 - ECU Information
- Special Function
 - Forced regeneration vehicle stationary
 - Change of high pressure pump with its fuel flow regulator
 - Replacement of the EGR valve
 - Change of air mixer
 - Replacement of the turbo
 - Replacement of the air flow sensor
 - Replacement of the engine block without the air flow sensor
 - Replacement of the engine block with the air flow sensor
 - Replacement of the additive reservoir of the pump or of the pipes
 - Replacement of the particle emission filter
 - Replacement of the oxygen sensor

Engine (EDC17CP42)

- Basic function
 - DTC Analysis
 - Data Analysis
 - Actuation Test
 - ECU Information

Engine (HDI_SID807 9HR)

- Basic function
 - DTC Analysis
 - Data Analysis
 - Actuation Test
 - ECU Information
- Special Function
 - Forced regeneration vehicle stationary
 - Change of high pressure pump with its fuel flow regulator
 - Replacement of the EGR valve
 - Change of air mixer
 - Replacement of the turbo
 - Replacement of the air flow sensor

Replacement of the engine block without the air flow sensor
 Replacement of the engine block with the air flow sensor
 Replacement of the additive reservoir of the pump or of the pipes
 Replacement of the particle emission filter
 Replacement of the oxygen sensor

Engine (HDI_SID807 9HL)

- Basic function
 - DTC Analysis
 - Data Analysis
 - Actuation Test
 - ECU Information
- Special Function
 - Forced regeneration vehicle stationary
 - Change of high pressure pump with its fuel flow regulator
 - Replacement of the EGR valve
 - Change of air mixer
 - Replacement of the turbo
 - Replacement of the air flow sensor
 - Replacement of the engine block without the air flow sensor
 - Replacement of the engine block with the air flow sensor
 - Replacement of the additive reservoir of the pump or of the pipes
 - Replacement of the particle emission filter
 - Replacement of the oxygen sensor

Engine (DCM6.2)

- Basic function
 - DTC Analysis
 - Data Analysis
 - Actuation Test
 - ECU Information
- Special Function
 - Replacement of the EGR valve
 - Replacement of the engine block with the air flow sensor
 - Replacement of the fuel flow regulator
 - Replacement of the ancillary drive belt
 - Replacement of the exhaust manifold
 - Replacement of the turbocharger
 - Replacement of starter motor
 - Replacement of the clutch
 - Replacement of the engine flywheel
 - Replacement of the diesel high pressure rail
 - Programming the air mixer stops
 - Programming the EGR valve stops
 - Programming of the stops of the turbocharger
 - Cleaning the EGR valve
 - Particle filter regeneration

Filling of the additive reservoir or pouch	- Basic function
Filling of the urea reservoir	DTC Analysis
Draining and filling of the urea solution reservoir	Actuation Test
Replacement of the low pressure fuel pump+ of the fuel filter or of the pipes	ECU Information
Replacement of the high pressure pump	Parking assistance (AAS)
Replacement of the air mixer	- Basic function
Particle filter replacement	DTC Analysis
Replacement of the precatlyser	Data Analysis
Replacement of the cylinder block	Actuation Test
Replacement of the battery	ECU Information
Replacement of the flowmeter	Parking assistance (AAS_UDS)
Cleaning the EGR exchanger bypass	- Basic function
Initialization of the deNox system faults	DTC Analysis
Temporary reactivation of the stop and start function	Data Analysis
Replacement of the particle emission filter differential pressure sensor	Actuation Test
Replacement of the Nox sensor	ECU Information
Replacement of the deNox catalytic converter	Lane departure warning system (AFIL)
Replacement of the reservoir of the gauge pump module of the deNox system pipes or of the urea injector	- Basic function
Replacement of the cylinder head without the air flow sensor	DTC Analysis
Replacement of the cylinder head with the air flow sensor	Data Analysis
Replacement of the engine block without the flowmeter	Actuation Test
Replacement of the camshaft	ECU Information
Replacement of the reversible alternator	Anti-theft alarm (ALARME)
Replacement of the power accumulator or of the voltage retaining device	- Basic function
	DTC Analysis
	Data Analysis
	Actuation Test
	ECU Information
Built-In system interface	Windscreen wiper (MOTEV)
- Basic function	- Basic function
DTC Analysis	Actuation Test
ECU Information	ECU Information
- Special Function	Rain sensor Brightness (PLUIE LUMINOSITE)
Reset to zero of the counter for the number of restarts	- Basic function
	DTC Analysis
	ECU Information
Instrument panel (COMBINE)	Seat driver position memory module (BDMC)
- Basic function	- Basic function
DTC Analysis	DTC Analysis
Data Analysis	Data Analysis
Actuation Test	Actuation Test
ECU Information	ECU Information
Radio (RD45)	Airbag ECU (SAC AUTOLIV)
- Basic function	- Basic function
DTC Analysis	DTC Analysis
Data Analysis	Data Analysis
Actuation Test	Actuation Test
ECU Information	ECU Information
CD player	

- Special Function	Actuation Test
Locking	ECU Information
Unlocking	
Configuration	
Driver's door module (PDPC)	Gearbox ECU (CFC300P)
- Basic function	- Basic function
DTC Analysis	DTC Analysis
Data Analysis	Data Analysis
Actuation Test	Actuation Test
ECU Information	ECU Information
Multifunction screen (TYPE 'C' (DOT matrix))	Gearbox ECU (BVA_AM6)
- Basic function	- Basic function
DTC Analysis	DTC Analysis
Data Analysis	Data Analysis
Actuation Test	Actuation Test
ECU Information	ECU Information
- Special Function	
Configuration and display mode	
Configuration of options	
Remote Control Configuration	
Customer language configuration	
Configuration of the customer parameter setting menu	
Multifunction screen (TYPE 'C color'(DOT matrix))	Gearbox ECU (BVA_AM6_AT6_EURO5)
- Basic function	- Basic function
DTC Analysis	DTC Analysis
ECU Information	Data Analysis
- Special Function	Actuation Test
Customer configuration	ECU Information
Vehicle configuration	- Special Function
Configuration of the personalization menu	Programming of the neutral position
Anti-lock brake system (ESP8.1_BOSCH)	Replacement of the automatic gearbox oil
- Basic function	
DTC Analysis	Gearbox ECU (BVA_AM6_AT6_UDS)
Data Analysis	- Basic function
Actuation Test	DTC Analysis
ECU Information	Data Analysis
- Special Function	Actuation Test
Calibration of the steering wheel angle sensor	ECU Information
Air Bleeding	- Special Function
Reactivation of automatic application of the electric parking brake	Programming of the neutral position
Longitudinal Acceleration Sensor Calibration	Replacement of the automatic gearbox oil
Deactivation of the automatic application of the electric parking brake function	Partial realignment of the programmed values
Clutch pedal sensor calibration	Full realignment of the programmed values
Gearbox ECU (AL4)	Controls under the steering wheel (VCCF)
- Basic function	- Basic function
DTC Analysis	DTC Analysis
Data Analysis	Data Analysis
	Actuation Test
	ECU Information
	Dynamic headlamp height adjuster (Projectors)
	- Basic function
	DTC Analysis
	Data Analysis
	Actuation Test
	ECU Information
	- Special Function
	Calibration
	Vehicle height sensor programming



G-scan & G-scan2 Distributor Bulletin

2017 September Update Details

Sep 05, 2017

Hands Free Kit (KML) <ul style="list-style-type: none">- Basic function<ul style="list-style-type: none">DTC AnalysisData AnalysisActuation TestECU Information	Data Analysis ECU Information
Hands Free Kit (BOITIER_NOMADE) <ul style="list-style-type: none">- Basic function<ul style="list-style-type: none">DTC AnalysisData AnalysisActuation TestECU Information	Radio amplifier (AMPLI AUDIO) <ul style="list-style-type: none">- Basic function<ul style="list-style-type: none">DTC AnalysisActuation TestECU Information
Air conditioning (CLIM_REGULEE) <ul style="list-style-type: none">- Basic function<ul style="list-style-type: none">DTC AnalysisData AnalysisActuation TestECU Information	C6 Vehicle Added Engine (XFU BOSCH ME747) <ul style="list-style-type: none">- Basic function<ul style="list-style-type: none">DTC AnalysisData AnalysisActuation TestECU Information- Special Function<ul style="list-style-type: none">Initializing the auto adaptive Configuration
Trailer relay unit (BSR) <ul style="list-style-type: none">- Basic function<ul style="list-style-type: none">DTC Analysis	Engine (XFV BOSCH ME747) <ul style="list-style-type: none">- Basic function<ul style="list-style-type: none">DTC AnalysisData AnalysisActuation TestECU Information- Special Function<ul style="list-style-type: none">Initializing the auto adaptive Configuration
Engine relay unit (BSM) <ul style="list-style-type: none">- Basic function<ul style="list-style-type: none">DTC Analysis	Engine (4HP BOSCH EDC16CP39 DW12BTED4) <ul style="list-style-type: none">- Basic function<ul style="list-style-type: none">DTC AnalysisData AnalysisActuation TestECU Information- Special Function<ul style="list-style-type: none">Forced regeneration vehicle stationaryReplacement of the additive reservoir of the pump or of the pipesReplacement of the particle emission filterFilling of the diesel additive adding reservoirReplacement of the diesel additive reservoir of the pump or of the pipesEGR electrovalve replacementInitialization of the EGR valveInitialization of the turbocharger2 turbine valve (VT2)Initialization of the EGR butterflyInitialization of the air flow sensorInitialization of the engine ECUO2 sensor initializationEGR butterfly replacementReplacement of the turbocharger turbine valve 2Filling of the additive reservoir
Telematics (SMEG_PLUS) <ul style="list-style-type: none">- Basic function<ul style="list-style-type: none">DTC AnalysisData AnalysisActuation TestECU Information	
Service module (BTA_2) <ul style="list-style-type: none">- Basic function<ul style="list-style-type: none">DTC AnalysisData AnalysisActuation TestECU Information- Special Function<ul style="list-style-type: none">Configuration of the vehicle's electrical architecture	
Motorized boot ECU (COFFRE MOTORISE) <ul style="list-style-type: none">- Basic function<ul style="list-style-type: none">DTC AnalysisData AnalysisActuation TestECU Information	
High frequency receiver (RHF) <ul style="list-style-type: none">- Basic function<ul style="list-style-type: none">DTC Analysis	

Engine (4HR BOSCH EDC16CP39 DW12BTED4)

- Basic function
 - DTC Analysis
 - Data Analysis
 - Actuation Test
 - ECU Information
- Special Function
 - Forced regeneration vehicle stationary
 - Replacement of the additive reservoir of the pump or of the pipes
 - Replacement of the particle emission filter
 - Filling of the diesel additive adding reservoir
 - Replacement of the diesel additive reservoir of the pump or of the pipes
 - EGR electrovalve replacement
 - Initialization of the EGR valve
 - Initialization of the turbocharger2 turbine valve (VT2)
 - Initialization of the EGR butterfly
 - Initialization of the air flow sensor
 - Initialization of the engine ECU
 - O2 sensor initialization
 - EGR butterfly replacement
 - Replacement of the turbocharger turbine valve 2
 - Filling of the additive reservoir

Engine (4HS BOSCH EDC16CP39 DW12BTED4)

- Basic function
 - DTC Analysis
 - Data Analysis
 - Actuation Test
 - ECU Information
- Special Function
 - Forced regeneration vehicle stationary
 - Replacement of the additive reservoir of the pump or of the pipes
 - Replacement of the particle emission filter
 - Filling of the diesel additive adding reservoir
 - Replacement of the diesel additive reservoir of the pump or of the pipes
 - EGR electro valve replacement
 - Initialization of the EGR valve
 - Initialization of the turbocharger2 turbine valve (VT2)
 - Initialization of the EGR butterfly
 - Initialization of the air flow sensor
 - Initialization of the engine ECU
 - O2 sensor initialization
 - EGR butterfly replacement
 - Replacement of the turbocharger turbine valve 2
 - Filling of the additive reservoir

Engine (4HT BOSCH EDC16CP39 DW12BTED4)

- Basic function
 - DTC Analysis
 - Data Analysis

Actuation Test

ECU Information

- Special Function
 - Forced regeneration vehicle stationary
 - Replacement of the additive reservoir of the pump or of the pipes
 - Replacement of the particle emission filter
 - Filling of the diesel additive adding reservoir
 - Replacement of the diesel additive reservoir of the pump or of the pipes
 - EGR electrovalve replacement
 - Initialization of the EGR valve
 - Initialization of the turbocharger2 turbine valve (VT2)
 - Initialization of the EGR butterfly
 - Initialization of the air flow sensor
 - Initialization of the engine ECU
 - O2 sensor initialization
 - EGR butterfly replacement
 - Replacement of the turbocharger turbine valve 2
 - Filling of the additive reservoir

Engine (UHZ SIEMENS SID201)

- Basic function
 - DTC Analysis
 - Data Analysis
 - Actuation Test
 - ECU Information
- Special Function
 - Forced Regeneration Of The Particle Filter Vehicle Stationary
 - Change of EGR Valve
 - Replacement Of The Additive Reservoir Of Pump Or Pipes
 - Replacement Of The Particle Emission Filter
 - Filling Of The Additive Reservoir
 - Top Up Diesel Additive Tank
 - Replacement of diesel additive tank and fuel tank

Engine (X8Z-DT20C EDC17CP11)

- Basic function
 - DTC Analysis
 - Data Analysis
 - Actuation Test
 - ECU Information

Gearbox (BVA_AM6)

- Basic function
 - DTC Analysis
 - Data Analysis
 - Actuation Test
 - ECU Information

Gearbox (BVA AM6_AT6 Euro5)

- Basic function
 - DTC Analysis



G-scan & G-scan2 Distributor Bulletin

2017 September Update Details

Sep 05, 2017

- Data Analysis
- Actuation Test
- ECU Information
- Special Function
 - Programming of the neutral position
 - Replacement of the automatic gearbox oil
- Airbag
 - Basic function
 - DTC Analysis
 - Data Analysis
 - ECU Information
 - Special Function
 - Configuration
 - Locking
- Anti-lock brake system (ESP8.1_BOSCH)
 - Basic function
 - DTC Analysis
 - Data Analysis
 - Actuation Test
 - ECU Information
 - Special Function
 - Calibration of the steering wheel angle sensor
- Anti-lock brake system (ESP VSC440)
 - Basic function
 - DTC Analysis
 - Data Analysis
 - Actuation Test
 - ECU Information
 - Special Function
 - Calibration of the steering wheel angle sensor bleeding
- Instrument panel
 - Basic function
 - DTC Analysis
 - Data Analysis
 - Actuation Test
 - ECU Information
- Instrument panel
 - Basic function
 - DTC Analysis
 - Data Analysis
 - Actuation Test
 - ECU Information
- Radio
 - Basic function
 - DTC Analysis
 - Data Analysis
 - Actuation Test
 - ECU Information
- CD player
 - Basic function
 - DTC Analysis
 - Actuation Test
 - ECU Information
- Parking assistance
 - Basic function
 - DTC Analysis
 - Data Analysis
 - Actuation Test
 - ECU Information
- Air conditioning
 - Basic function
 - DTC Analysis
 - Data Analysis
 - Actuation Test
 - ECU Information
- Built-in Systems interface
 - Basic function
 - DTC Analysis
- Rear air conditioning table
 - Basic function
 - DTC Analysis
 - Data Analysis
 - Actuation Test
 - ECU Information
- Lane departure warning system
 - Basic function
 - DTC Analysis
 - Data Analysis
 - Actuation Test
 - ECU Information
- Alarm
 - Basic function
 - DTC Analysis
 - Data Analysis
 - Actuation Test
 - ECU Information
- Windscreen wiper
 - Basic function
 - Actuation Test
 - ECU Information
- Controls under the steering wheel
 - Basic function
 - DTC Analysis
 - Data Analysis



G-scan & G-scan2 Distributor Bulletin

2017 September Update Details

Sep 05, 2017

Actuation Test ECU Information	menu
Driver's door module - Basic function DTC Analysis Data Analysis Actuation Test ECU Information	Multifunction screen (TYPE 'C color'(DOT matrix)) - Basic function DTC Analysis ECU Information - Special Function Customer configuration Vehicle configuration Configuration of the personalization menu
Passenger's door module - Basic function DTC Analysis Data Analysis Actuation Test ECU Information	Pedestrian impact detection - Basic function DTC Analysis Data Analysis ECU Information
Rain sensor Brightness - Basic function DTC Analysis ECU Information	Moving panel deflector - Basic function DTC Analysis Data Analysis Actuation Test ECU Information
Driver's seat memorizing unit - Basic function DTC Analysis Data Analysis Actuation Test ECU Information	Directional headlamps - Basic function DTC Analysis Data Analysis Actuation Test ECU Information
Passenger's seat memorizing unit - Basic function DTC Analysis Actuation Test ECU Information	Hands Free Kit (KML) - Basic function DTC Analysis Data Analysis Actuation Test ECU Information
Engine relay unit - Basic function DTC Analysis	Hands Free Kit (BOITIER_NOMADE) - Basic function DTC Analysis Data Analysis Actuation Test ECU Information
Trailer relay unit - Basic function DTC Analysis	High Head Vision - Basic function DTC Analysis Data Analysis Actuation Test ECU Information
Multifunction screen (TYPE 'C' (DOT matrix)) - Basic function DTC Analysis Data Analysis Actuation Test ECU Information - Special Function Configuration and display mode Configuration of options Remote Control Configuration Customer language configuration Configuration of the customer parameter setting	C8 Vehicle Added Engine (RFJ MM6LPB)

- Basic function
 - DTC Analysis
 - Data Analysis
 - Actuation Test
 - ECU Information
- Special Function
 - Re-centering of autoadaptive systems
- Engine (4HP BOSCH EDC16CP39 DW12BTED4)
 - Basic function
 - DTC Analysis
 - Data Analysis
 - Actuation Test
 - ECU Information
 - Special Function
 - Forced regeneration vehicle stationary
 - Replacement of the additive reservoir of the pump or of the pipes
 - Replacement of the particle emission filter
- Filling of the diesel additive adding reservoir
 - Replacement of the diesel additive reservoir of the pump or of the pipes
 - EGR electrovalve replacement
 - Initialization of the EGR valve
 - Initialization of the turbocharger2 turbine valve (VT2)
 - Initialization of the EGR butterfly
 - Initialization of the air flow sensor
 - Initialization of the engine ECU
 - O2 sensor initialization
 - EGR butterfly replacement
 - Replacement of the turbocharger turbine valve 2
 - Filling of the additive reservoir
- Engine (4HR BOSCH EDC16CP39 DW12BTED4)
 - Basic function
 - DTC Analysis
 - Data Analysis
 - Actuation Test
 - ECU Information
 - Special Function
 - Forced regeneration vehicle stationary
 - Replacement of the additive reservoir of the pump or of the pipes
 - Replacement of the particle emission filter
 - Filling of the diesel additive adding reservoir
 - Replacement of the diesel additive reservoir of the pump or of the pipes
 - EGR electrovalve replacement
 - Initialization of the EGR valve
 - Initialization of the turbocharger2 turbine valve (VT2)
 - Initialization of the EGR butterfly
 - Initialization of the air flow sensor
 - Initialization of the engine ECU
 - O2 sensor initialization
 - EGR butterfly replacement
 - Replacement of the turbocharger turbine valve 2
- Filling of the additive reservoir
 - Replacement of the additive reservoir of the pump or of the pipes
 - Replacement of the particle emission filter
 - Initialization of the EGR valve
 - Initialization of the turbocharger2 turbine valve (VT2)
 - Initialization of the EGR butterfly
 - Initialization of the air flow sensor
 - Initialization of the engine ECU
 - O2 sensor initialization
 - EGR butterfly replacement
 - Replacement of the turbocharger turbine valve 2
 - Filling of the additive reservoir
- Engine (4HS BOSCH EDC16CP39 DW12BTED4)
 - Basic function
 - DTC Analysis
 - Data Analysis
 - Actuation Test
 - ECU Information
 - Special Function
 - Forced regeneration vehicle stationary
 - Replacement of the additive reservoir of the pump or of the pipes
 - Replacement of the particle emission filter
 - Filling of the diesel additive adding reservoir
 - Replacement of the diesel additive reservoir of the pump or of the pipes
 - EGR electrovalve replacement
 - Initialization of the EGR valve
 - Initialization of the turbocharger2 turbine valve (VT2)
 - Initialization of the EGR butterfly
 - Initialization of the air flow sensor
 - Initialization of the engine ECU
 - O2 sensor initialization
 - EGR butterfly replacement
 - Replacement of the turbocharger turbine valve 2
 - Filling of the additive reservoir
- Engine (4HT BOSCH EDC16CP39 DW12BTED4)
 - Basic function
 - DTC Analysis
 - Data Analysis
 - Actuation Test
 - ECU Information
 - Special Function
 - Forced regeneration vehicle stationary
 - Replacement of the additive reservoir of the pump or of the pipes
 - Replacement of the particle emission filter
 - Filling of the diesel additive adding reservoir
 - Replacement of the diesel additive reservoir of the pump or of the pipes
 - EGR electrovalve replacement
 - Initialization of the EGR valve
 - Initialization of the turbocharger2 turbine valve (VT2)
 - Initialization of the EGR butterfly
 - Initialization of the air flow sensor
 - Initialization of the engine ECU
 - O2 sensor initialization
 - EGR butterfly replacement
 - Replacement of the turbocharger turbine valve 2
 - Filling of the additive reservoir
- Engine (2.2 L 4HW BOSCH EDC15C2)
 - Basic function
 - DTC Analysis



G-scan & G-scan2 Distributor Bulletin

2017 September Update Details

Sep 05, 2017

Data Analysis Actuation Test ECU Information	Stationary Replacement Of The Particle Emission Filter Initialization of the additive level when filling or replacing the additive reservoir Replacement Of The Diesel Additive Reservoir Of Pump/Pipes
Engine (2.0 L RHT BOSCH EDC15C2) - Basic function DTC Analysis Data Analysis Actuation Test ECU Information	Engine (RHH DCM3.5) - Basic function DTC Analysis Data Analysis Actuation Test ECU Information - Special Function Forced Regeneration Of The Particle Filter Vehicle Stationary Replacement Of The Particle Emission Filter Forced Regeneration Of The Particle Filter Vehicle moving Initialization of the additive level when filling or replacing the additive reservoir
Engine (2.0 L RHW BOSCH EDC15C2) - Basic function DTC Analysis Data Analysis Actuation Test ECU Information	Engine (RHD DCM3.5) - Basic function DTC Analysis Data Analysis Actuation Test ECU Information - Special Function Forced Regeneration Of The Particle Filter Vehicle Stationary Replacement Of The Particle Emission Filter Forced Regeneration Of The Particle Filter Vehicle moving Initialization of the additive level when filling or replacing the additive reservoir
Engine (2.0 RHZ BOSCH EDC15C2) - Basic function DTC Analysis Data Analysis Actuation Test ECU Information	Engine (RHM DCM3.5) - Basic function DTC Analysis Data Analysis Actuation Test ECU Information - Special Function Forced Regeneration Of The Particle Filter Vehicle Stationary Replacement Of The Particle Emission Filter Forced Regeneration Of The Particle Filter Vehicle moving Initialization of the additive level when filling or replacing the additive reservoir
Engine (2.0 L RHM BOSCH EDC15C2) - Basic function DTC Analysis Data Analysis Actuation Test ECU Information	Engine (RHR SIEMENS SID803A) - Basic function DTC Analysis Data Analysis Actuation Test ECU Information - Special Function Forced Regeneration Of The Particle Filter Vehicle Stationary Replacement Of The Particle Emission Filter Initialization of the additive level when filling or replacing the additive reservoir Replacement Of The Diesel Additive Reservoir Of Pump/Pipes
Engine (RHR SIEMENS SID803A) - Basic function DTC Analysis Data Analysis Actuation Test ECU Information - Special Function Forced Regeneration Of The Particle Filter Vehicle Stationary Replacement Of The Particle Emission Filter Initialization of the additive level when filling or replacing the additive reservoir Replacement Of The Diesel Additive Reservoir Of Pump/Pipes	Gearbox ECU (Auto gearbox AL4) - Basic function DTC Analysis Data Analysis Actuation Test ECU Information
Engine (RHK SIEMENS SID803A) - Basic function DTC Analysis Data Analysis Actuation Test ECU Information - Special Function Forced Regeneration Of The Particle Filter Vehicle	Gearbox ECU (Auto gearbox AM6) - Basic function DTC Analysis Data Analysis Actuation Test ECU Information
	Gearbox ECU (BVA AM6 Euro5) - Basic function DTC Analysis Data Analysis Actuation Test

ECU Information	DTC Analysis
Airbag	Data Analysis
- Basic function	Actuation Test
DTC Analysis	ECU Information
Data Analysis	Alarm
ECU Information	- Basic function
Anti-lock brake system (ESP 8.1)	DTC Analysis
- Basic function	Data Analysis
DTC Analysis	Actuation Test
Data Analysis	ECU Information
Actuation Test	Switch module at the steering wheel
ECU Information	- Basic function
- Special Function	DTC Analysis
Calibration of the steering wheel angle sensor	Data Analysis
Anti-lock brake system (ESP8_BOSCH)	Actuation Test
- Basic function	ECU Information
DTC Analysis	Diesel fuel additive control unit
Data Analysis	- Basic function
Actuation Test	DTC Analysis
ECU Information	Data Analysis
- Special Function	Actuation Test
Calibration of the steering wheel angle sensor	ECU Information
Instrument panel	- Special Function
- Basic function	Cleaning or replacement of the particulate emission filter
DTC Analysis	Filling of the reservoir+ light of the low additive level warning light
Data Analysis	Replacement of the metering pump or replacement of the reservoir
Actuation Test	
ECU Information	
Radio	Sliding side doors module
- Basic function	- Basic function
DTC Analysis	DTC Analysis
Data Analysis	Data Analysis
Actuation Test	Actuation Test
ECU Information	ECU Information
CD player	Driver's door module
- Basic function	- Basic function
DTC Analysis	DTC Analysis
Actuation Test	Data Analysis
ECU Information	Actuation Test
	ECU Information
Parking aid	Passenger's door module
- Basic function	- Basic function
DTC Analysis	DTC Analysis
Data Analysis	Data Analysis
Actuation Test	Actuation Test
ECU Information	
Air conditioning	
- Basic function	Rain sensor Brightness

- Basic function DTC Analysis ECU Information	Actuation Test ECU Information
Front sunroof - Basic function DTC Analysis Data Analysis Actuation Test ECU Information	Additional heating - Basic function DTC Analysis Data Analysis Actuation Test ECU Information
Rear sunroof - Basic function DTC Analysis Data Analysis Actuation Test ECU Information	Power steering - Basic function DTC Analysis Data Analysis Actuation Test ECU Information
Middle sunroof - Basic function DTC Analysis Data Analysis Actuation Test ECU Information	Right-hand headlamp - Basic function DTC Analysis Data Analysis Actuation Test ECU Information
Memory unit - Basic function DTC Analysis Data Analysis Actuation Test ECU Information	Left-hand headlamp - Basic function DTC Analysis Data Analysis Actuation Test ECU Information
Telematic receiver command - Basic function Data Analysis ECU Information	Deflation detection - Basic function DTC Analysis ECU Information
Multifunction display - Basic function DTC Analysis Data Analysis Actuation Test ECU Information - Special Function Configuration and display mode Configuration of options Remote Control Configuration Customer language configuration Configuration of the customer parameter setting menu	Hands Free Kit - Basic function DTC Analysis Data Analysis Actuation Test ECU Information
Telematic - Basic function DTC Analysis Data Analysis	Built-in Systems interface - Basic function DTC Analysis

[Back to Index](#)

VOLVO

V70 2002 ECM (Engine Control Module) / Data Analysis Bug fixed

XC70 2008~2015 BCM (Brake Control Module)

- Special Function added Calibration

[Back to Index](#)

EUROPE TRUCKS BETA

Scania New System added

- EMS(Engine Management System)
- GMS(Transmission Control System)
- BMS(Brake Management System)
- SMS(Suspension Control System)
- ICL(Instrument Panel)
- APS(Compressed Air Supply)
- CCS(Smart Climate Control System)
- COO(Coordinator)
- VIS(Lighting System)
- BCS(Bus Chassis System)
- TCO(Mileage Recorder)
- LAS(Locking And Alarm System)

[Back to Index](#)

FORD USA

F150 3.5L EcoBoost - Gas Turbocharged Direct Injection 2015 - 2016 Vehicle Added

- PCM (Powertrain Control Module)
- ABS (Anti-Lock Brake System)
- ACM (Audio Control Module)
- APIM (Accessory Protocol Interface Module)
- BCM (Body Control Module)
- C-CM (Cruise Control Module)
- DACM-C (Digital Audio Control Module C)
- DDM (Driver's Door Module)
- DSM (Driver's Seat Module)
- DSP (Digital Signal Processing Module)
- FCDIM (Front Control/Display Interface Module)
- FCIM (Front Controls Interface Module)
- GPSM (Global Positioning System Module)
- GWM (Gateway Module A)
- HSWM (Heated Steering Wheel Module)
- HUD (Head up Display)
- IPC (Instrument Panel Control Module)

- IPM-A (Image Processing Module A)
- IPM-B (Image Processing Module B)
- OCSM (Occupant Classification System Module)
- PAM (Parking Aid Module)
- PBM (Parking Brake Control Module)
- PDM (Passenger's Door Module)
- PSCM (Power Steering Control Module)
- RBM (Running Board Control Module)
- RCM (Restraint Control Module)
- RTM (Radio Transceiver Module)
- SCCM (Steering Column Control Module)
- SCM-E (Seat Control Module E)
- SCM-G (Seat Control Module G)
- SCM-H (Seat Control Module H)
- SOD-L (Side Obstacle Detection Control Module Left)
- SOD-R (Side Obstacle Detection Control Module Right)
- TBM (Tracking And Blocking Module)
- TCCM (Transfer Case Control Module)
- TRM (Trailer Module)

F150 3.5L EcoBoost - Gas Turbocharged Direct Injection 2017 Vehicle Added

- PCM (Powertrain Control Module)
- ABS (Anti-Lock Brake System)
- ACM (Audio Control Module)
- APIM (Accessory Protocol Interface Module)
- BCM (Body Control Module)
- C-CM (Cruise Control Module)
- DACM-C (Digital Audio Control Module C)
- DCDC (DC to DC Converter Control Module)
- DDM (Driver's Door Module)
- DSM (Driver's Seat Module)
- DSP (Digital Signal Processing Module)
- FCDIM (Front Control/Display Interface Module)
- FCIM (Front Controls Interface Module)
- GPSM (Global Positioning System Module)
- GWM (Gateway Module A)
- HSWM (Heated Steering Wheel Module)
- HUD (Head up Display)
- IPC (Instrument Panel Control Module)
- IPM-A (Image Processing Module A)
- IPM-B (Image Processing Module B)
- OCSM (Occupant Classification System Module)
- PAM (Parking Aid Module)
- PBM (Parking Brake Control Module)
- PDM (Passenger's Door Module)
- PSCM (Power Steering Control Module)
- RBM (Running Board Control Module)
- RCM (Restraint Control Module)
- RTM (Radio Transceiver Module)
- SCCM (Steering Column Control Module)
- SCM-E (Seat Control Module E)
- SCM-G (Seat Control Module G)
- SCM-H (Seat Control Module H)
- SOD-L (Side Obstacle Detection Control Module Left)

- SOD-R (Side Obstacle Detection Control Module Right)
- TBM (Tracking and Blocking Module)
- TCCM (Transfer Case Control Module)
- TRM (Trailer Module)

F150 5.0L TiVCT 2015 ~ Vehicle Added

- PCM (Powertrain Control Module)
- ABS (Anti-Lock Brake System)
- ACM (Audio Control Module)
- APIM (Accessory Protocol Interface Module)
- BCM (Body Control Module)
- C-CM (Cruise Control Module)
- DACM-C (Digital Audio Control Module C)
- DDM (Driver's Door Module)
- DSM (Driver's Seat Module)
- DSP (Digital Signal Processing Module)
- FCDIM (Front Control/Display Interface Module)
- FCIM (Front Controls Interface Module)
- GPSM (Global Positioning System Module)
- GWM (Gateway Module A)
- HSWM (Heated Steering Wheel Module)
- HUD (Head up Display)
- IPC (Instrument Panel Control Module)
- IPM-A (Image Processing Module A)
- IPM-B (Image Processing Module B)
- OCSM (Occupant Classification System Module)
- PAM (Parking Aid Module)
- PBM (Parking Brake Control Module)
- PDM (Passenger's Door Module)
- PSCM (Power Steering Control Module)
- RBM (Running Board Control Module)
- RCM (Restraint Control Module)
- RTM (Radio Transceiver Module)
- SCCM (Steering Column Control Module)
- SCM-E (Seat Control Module E)
- SCM-G (Seat Control Module G)
- SCM-H (Seat Control Module H)
- SOD-L (Side Obstacle Detection Control Module Left)
- SOD-R (Side Obstacle Detection Control Module Right)
- TBM (Tracking and Blocking Module)
- TCCM (Transfer Case Control Module)
- TRM (Trailer Module)

F150 2.7L EcoBoost - Gas Turbocharged Direct Injection 2015 ~ 2016 Vehicle Added

- PCM (Powertrain Control Module)
- ABS (Anti-Lock Brake System)
- ACM (Audio Control Module)
- APIM (Accessory Protocol Interface Module)
- BCM (Body Control Module)
- C-CM (Cruise Control Module)
- DACM-C (Digital Audio Control Module C)
- DDM (Driver's Door Module)
- DSM (Driver's Seat Module)
- DSP (Digital Signal Processing Module)

- FCDIM (Front Control/Display Interface Module)
- FCIM (Front Controls Interface Module)
- GPSM (Global Positioning System Module)
- GWM (Gateway Module A)
- HSWM (Heated Steering Wheel Module)
- HUD (Head up Display)
- IPC (Instrument Panel Control Module)
- IPM-A (Image Processing Module A)
- IPM-B (Image Processing Module B)
- OCSM (Occupant Classification System Module)
- PAM (Parking Aid Module)
- PBM (Parking Brake Control Module)
- PDM (Passenger's Door Module)
- PSCM (Power Steering Control Module)
- RBM (Running Board Control Module)
- RCM (Restraint Control Module)
- RTM (Radio Transceiver Module)
- SCCM (Steering Column Control Module)
- SCM-E (Seat Control Module E)
- SCM-G (Seat Control Module G)
- SCM-H (Seat Control Module H)
- SOD-L (Side Obstacle Detection Control Module Left)
- SOD-R (Side Obstacle Detection Control Module Right)
- TBM (Tracking Blocking Module)
- TCCM (Transfer Case Control Module)
- TRM (Trailer Module)

Windstar 3.0L V6 ~ 2000 Vehicle Added

- PCM (Powertrain Control Module)
- ABS (Anti-Lock Brake System)
- DDM (Driver's Door Module)
- IC (Instrument Cluster)
- NGSC (Next Generation Speed Control Module)
- FEM (Front Electronic Module)
- MC (Message Center)
- REM (Rear Electronic Module)
- RCM (Restraint Control Module)
- LPSDM (Left Power Sliding Module)
- RPSDM (Right Power Sliding Module)
- PAM (Parking Aid Module)

Windstar 3.8L V6 ~ 2003 Vehicle Added

- PCM (Powertrain Control Module)
- ABS (Anti-Lock Brake System)
- DDM (Driver's Door Module)
- IC (Instrument Cluster)
- NGSC (Next Generation Speed Control Module)
- FEM (Front Electronic Module)
- MC (Message Center)
- REM (Rear Electronic Module)
- RCM (Restraint Control Module)
- LPSDM (Left Power Sliding Module)
- RPSDM (Right Power Sliding Module)
- PAM (Parking Aid Module)

[Back to Index](#)

FORD USA (LINCOLN)

Blackwood 5.4L 4V 2002 ~ 2003 Vehicle Added

- PCM(Powertrain Control Module)
- ABS(Anti-Lock Brake System)
- DSM(Driver's Seat Module)
- GEM(Generic Electronic Module)
- HEC(Hybrid Electrical Cluster)
- LTM(Liftgate/Trunk Module)
- PAM(Parking Aid Module)
- RAP(Remote Anti-Theft/Personality Module)
- RASM(Rear Air Suspension Module)
- RCM(Restraint Control Module)
- EATC(Electronic Automatic Temperature Control)
- PATS(Passive Anti Theft System)

MKT 3.7L 4V 2010 ~ 2012 Vehicle Added

- PCM (Powertrain Control Module)
- 4X4 (4x4 Control Module)
- ABS (Anti-Lock Brake System)
- ACM (Audio Control Module)
- APIM (Accessory Protocol Interface Module)
- C-CM (Cruise Control Module)
- DCSM (Driver-Dual Climate Control Seat Module)
- DDM (Driver's Door Module)
- DSM (Driver's Seat Module)
- DSP (Digital Signal Processing Module)
- FCIM (Front Controls Interface Module)
- FDIM (Front Display Interface Module)
- GEM/SJB (Generic Electronic Module/Smart Junction

Box)

- HCM (Headlamp Control Module)
- HCM-2(Headlamp Control Module2)
- HUD (Head up Display)
- HVAC (Heating Ventilation Air Conditioning)
- ILCM (Interior Lighting Control Module)
- IPC (Instrument Panel Control Module)
- LTM (Liftgate/Trunk Module)
- OCSM (Occupant Classification System Module)
- PAM (Parking Aid Module)
- PCSM-2(Passenger Climate Control Seat Module 2)
- PSCM (Power Steering Control Module)
- RCM (Restraint Control Module)
- RETM (Rear Entertainment Module)
- RFA (Remote Function Actuator)
- RHVAC (Rear Heating Ventilation Air Conditioning)
- M (Steering Angle Sensor Module)
- SOD-L (Side Obstacle Detection Control Module Left)
- SOD-R (Side Obstacle Detection Control Module Right)

Mark LT 5.4L 3V 2006 ~ 2008 Vehicle Added

- PCM (Powertrain Control Module)
- 4X4 (4x4 Control Module)

- ABS (Anti-Lock Brake System)
- RIM (Remote Immobilizer Module)
- GEM (Generic Electronic Module)
- DSM (Driver's Seat Module)
- HVAC (Heating Ventilation Air Conditioning)
- IC (Instrument Cluster)
- PAM (Parking Aid Module)
- RCM (Restraint Control Module)
- VSM (Vehicle Security Module)
- PATS (Passive Anti-Theft System)

[Back to Index](#)

FORD USA (MERCURY)

Mark LT 3.0L 2V 2003 Vehicle Added

- PCM (Powertrain Control Module)
- ABS (Anti-Lock Brake System)
- EATC (Electronic Automatic Temperature Control)
- GEM (Generic Electronic Module)
- IC (Instrument Cluster)
- RCM (Restraint Control Module)

Mark LT 3.0L 4V 2003 Vehicle Added

- PCM (Powertrain Control Module)
- ABS (Anti-Lock Brake System)
- EATC (Electronic Automatic Temperature Control)
- GEM (Generic Electronic Module)
- IC (Instrument Cluster)
- RCM (Restraint Control Module)

[Back to Index](#)

GM USA

New Model & System added

- Buick

Allure 2010 Engine Sensor Added

- 2.4L LAF Engine Control Module
- 3.0L LF1 Engine Control Module
- 3.6L LLT Engine Control Module

Cascada 2016 Engine Sensor Added

- 1.6L LWC Engine Control Module

Enclave 2014~2016 Engine Sensor Added

- 3.6L LLT Engine Control Module

Encore 2013~2016 Engine Sensor Added

- 1.4L LUV Engine Control Module Automatic Transmission



G-scan & G-scan2 Distributor Bulletin

2017 September Update Details

Sep 05, 2017

1.4L LUV Engine Control Module Manual Transmission
1.4L LUJ Engine Control Module Automatic Transmission
1.4L LUJ Engine Control Module Manual Transmission
1.4L LE2 Engine Control Module Automatic Transmission
1.4L LE2 Engine Control Module Manual Transmission

Envision 2016 Engine Sensor Added

2.0L LTG Engine Control Module
2.5L LCV Engine Control Module

Lacrosse 2010~2016 Engine Sensor Added

2.4L LAF Engine Control Module
3.0L LF1 Engine Control Module
3.6L LLT Engine Control Module
2.4L LUK Engine Control Module
3.0L LFW Engine Control Module
3.6L LFX Engine Control Module

Regal 2011~2016 Engine Sensor Added

2.0L LHU Engine Control Module
2.4L LAF Engine Control Module
2.0L LTD Engine Control Module
2.4L LEA Engine Control Module
2.4L LUK Engine Control Module
2.0L LTG Engine Control Module

Verano 2012~2016 Engine Sensor Added

2.4L LEA Engine Control Module
2.0L LHU Engine Control Module Automatic Transmission
2.0L LHU Engine Control Module Manual Transmission

- Cadillac

ATS 2013~2016 Engine Sensor Added

2.0L LTG Engine Control Module
2.0L LTG Engine Control Module Automatic Transmission
2.0L LTG Engine Control Module Manual Transmission
2.5L LCV Engine Control Module
2.5L LCV Engine Control Module Automatic Transmission
2.5L LCV Engine Control Module Manual Transmission
3.6L LF4 Engine Control Module Automatic Transmission
3.6L LF4 Engine Control Module Manual Transmission
3.6L LFX Engine Control Module
3.6L LFX Engine Control Module Automatic Transmission
3.6L LFX Engine Control Module Manual Transmission
3.6L LGX Engine Control Module Automatic Transmission
3.6L LGX Engine Control Module Manual Transmission

CT6 2016 Engine Sensor Added

2.0L LTG Engine Control Module
3.0L LGW Engine Control Module
3.6L LGX Engine Control Module

CTS 2014~2016 Engine Sensor Added

2.0L LTG Engine Control Module Automatic Transmission
2.0L LTG Engine Control Module Manual Transmission

3.6L LF3 Engine Control Module
3.6L LFX Engine Control Module Automatic Transmission
3.6L LFX Engine Control Module Manual Transmission
6.2L LSA Engine Control Module Automatic Transmission
6.2L LSA Engine Control Module Manual Transmission
2.0L LTG Engine Control Module
3.6L LFX Engine Control Module
3.6L LGX Engine Control Module
6.2L LT4 Engine Control Module

ELR 2014~2016 Engine Sensor Added

Engine Control Module

Escalade 2014~2016 Engine Sensor Added

6.2L L94 Engine Control Module

Escalade EVS 2014~2016 Engine Sensor Added

6.2L L94 Engine Control Module

SRX 2010~2016 Engine Sensor Added

2.8L LAU Engine Control Module
3.0L LF1 Engine Control Module
2.8L LAU Engine Control Module
3.0L LFW Engine Control Module
3.6L LFX Engine Control Module

XTS 2013~2016 Engine Sensor Added

3.6L LFX Engine Control Module
3.6L LF3 Engine Control Module
2.0L LTG Engine Control Module

- Chevrolet

Aveo 2012~2016 Engine Sensor Added

1.2L LDC Engine Control Module Automatic Transmission
1.2L LDC Engine Control Module Manual Transmission
1.2L LMU Engine Control Module
1.2L LWD Engine Control Module Automatic Transmission
1.2L LWD Engine Control Module Manual Transmission
1.3L LDV Engine Control Module Automatic Transmission
1.3L LDV Engine Control Module Manual Transmission
1.3L LSF Engine Control Module Automatic Transmission
1.3L LSF Engine Control Module Manual Transmission
1.4L L2N Engine Control Module Automatic Transmission
1.4L L2N Engine Control Module Manual Transmission
1.4L L95 Engine Control Module
1.4L LDD Engine Control Module Automatic Transmission
1.4L LDD Engine Control Module Manual Transmission
1.4L LDT Engine Control Module Automatic Transmission
1.4L LDT Engine Control Module Manual Transmission
1.4L LUJ Engine Control Module Automatic Transmission
1.4L LUJ Engine Control Module Manual Transmission
1.4L LUV Engine Control Module Automatic Transmission
1.4L LUV Engine Control Module Manual Transmission
1.5L LV8 Engine Control Module
1.6L LDE Engine Control Module Automatic Transmission



G-scan & G-scan2 Distributor Bulletin

2017 September Update Details

Sep 05, 2017

1.6L LDE Engine Control Module Manual Transmission
1.6L LED Engine Control Module Automatic Transmission
1.6L LED Engine Control Module Manual Transmission
1.6L LFJ Engine Control Module Automatic Transmission
1.6L LFJ Engine Control Module Manual Transmission
1.6L LXT Engine Control Module
1.8L LUW Engine Control Module Automatic Transmission
1.8L LUW Engine Control Module Manual Transmission

Beat 2010~2016 Engine Sensor Added

1.0L LEB Engine Control Module Automatic Transmission
1.0L LEB Engine Control Module Manual Transmission
1.19L LC5 Engine Control Module
1.0L LEB Engine Control Module

Camaro 2010~2016 Engine Sensor Added

3.6L LLT Engine Control Module Automatic Transmission
3.6L LLT Engine Control Module Manual Transmission
6.2L L99 Engine Control Module Automatic Transmission
6.2L L99 Engine Control Module Manual Transmission
6.2L LS3 Engine Control Module Automatic Transmission
6.2L LS3 Engine Control Module Manual Transmission
3.6L LFX Engine Control Module Automatic Transmission
3.6L LFX Engine Control Module Manual Transmission
6.2L LSA Engine Control Module Automatic Transmission
6.2L LSA Engine Control Module Manual Transmission
7.0L LS7 Engine Control Module Automatic Transmission
7.0L LS7 Engine Control Module Manual Transmission
2.0L LTG Engine Control Module Automatic Transmission
2.0L LTG Engine Control Module Manual Transmission
3.6L LGX Engine Control Module Automatic Transmission
3.6L LGX Engine Control Module Manual Transmission
6.2L LT1 Engine Control Module Automatic Transmission
6.2L LT1 Engine Control Module Manual Transmission

Caprice 2012~2016 Engine Sensor Added

3.6L LFX Engine Control Module Automatic Transmission
3.6L LFX Engine Control Module Manual Transmission
6.0L L77 Engine Control Module Automatic Transmission
6.0L L77 Engine Control Module Manual Transmission

Captiva 2011~2016 Engine Sensor Added

2.0L LFS Engine Control Module Automatic Transmission
2.0L LFS Engine Control Module Manual Transmission
2.0L LNP Engine Control Module Automatic Transmission
2.0L LNP Engine Control Module Manual Transmission
2.2L LNQ Engine Control Module Automatic Transmission
2.2L LNQ Engine Control Module Manual Transmission
2.4L LE5 Engine Control Module Automatic Transmission
2.4L LE5 Engine Control Module Manual Transmission
2.4L LE9 Engine Control Module Automatic Transmission
2.4L LE9 Engine Control Module Manual Transmission
2.4L LEA Engine Control Module
2.4L LEA Engine Control Module Automatic Transmission
2.4L LEA Engine Control Module Manual Transmission
3.0L LF1 Engine Control Module Automatic Transmission

3.0L LF1 Engine Control Module Manual Transmission
3.0L LFW Engine Control Module
3.0L LFW Engine Control Module Automatic Transmission
3.0L LFW Engine Control Module Manual Transmission

Cheyenne 2014~2016 Engine Sensor Added

4.3L LV1 Engine Control Module
4.3L LV3 Engine Control Module
5.3L L83 Engine Control Module
6.0L L96 Engine Control Module
6.2L L86 Engine Control Module

Corvette 2014~2016 Engine Sensor Added

6.2L LT1 Engine Control Module Automatic Transmission
6.2L LT1 Engine Control Module Manual Transmission
6.2L LT4 Engine Control Module Automatic Transmission
6.2L LT4 Engine Control Module Manual Transmission

Equinox 2010~2016 Engine Sensor Added

2.4L LAF Engine Control Module
2.4L LEA Engine Control Module
3.0L LF1 Engine Control Module
3.0L LFW Engine Control Module
3.6L LFX Engine Control Module

Express 2014~2016 Engine Sensor Added

4.3L LU3 Engine Control Module
4.8L L20 Engine Control Module
5.3L LMF Engine Control Module
6.0L L96 Engine Control Module
6.0L LC8 Engine Control Module
6.6L LGH Engine Control Module

Impala 2014~2016 Engine Sensor Added

2.4L LUK Engine Control Module
2.5L LCV Engine Control Module
2.5L LKW Engine Control Module
3.6L LFR Engine Control Module
3.6L LFX Engine Control Module

Malibu 2012~2016 Engine Sensor Added

1.5L LFV Engine Control Module
2.0L LBN Engine Control Module
ransmission
2.0L LBS Engine Control Module Manual Transmission
2.0L LBY Engine Control Module Automatic Transmission
2.0L LBY Engine Control Module Manual Transmission
2.0L LTD Engine Control Module
2.0L LTG Engine Control Module
2.0L LTG Engine Control Module Automatic Transmission
2.0L LTG Engine Control Module Manual Transmission
2.4L LE9 Engine Control Module Automatic Transmission
2.4L LE9 Engine Control Module Manual Transmission
2.4L LUK Engine Control Module
2.5L LCV Engine Control Module Automatic Transmission



G-scan & G-scan2 Distributor Bulletin

2017 September Update Details

Sep 05, 2017

2.5L LCV Engine Control Module Manual Transmission
2.5L LKW Engine Control Module Automatic Transmission
2.5L LKW Engine Control Module Manual Transmission
3.0L LFW Engine Control Module Automatic Transmission
3.0L LFW Engine Control Module Manual Transmission

Savana 2014~2016 Engine Sensor Added

4.3L LU3 Engine Control Module
4.8L L20 Engine Control Module
5.3L LMF Engine Control Module
6.0L L96 Engine Control Module
6.0L LC8 Engine Control Module
6.6L LGH Engine Control Module

Silverado 2014~2016 Engine Sensor Added

4.3L LV1 Engine Control Module
4.3L LV3 Engine Control Module
5.3L L83 Engine Control Module
6.0L L96 Engine Control Module
6.0L LC8 Engine Control Module
6.2L L86 Engine Control Module
6.6L LML Engine Control Module

Suburban 2014~2016 Engine Sensor Added

5.3L L83 Engine Control Module
5.3L LC9 Engine Control Module
5.3L LMG Engine Control Module
6.0L L96 Engine Control Module
6.2L L86 Engine Control Module

Tahoe 2014~2016 Engine Sensor Added

5.3L LMG Engine Control Module
5.3L L83 Engine Control Module
6.2L L86 Engine Control Module

Traverse 2014~2016 Engine Sensor Added

3.6L LLT Engine Control Module

Volt 2011~2016 Engine Sensor Added

Engine Control Module

Acadia 2014~2016 Engine Sensor Added

3.6L LLT Engine Control Module

Canyon 2015~2016 Engine Sensor Added

2.5L LCV Engine Control Module Automatic Transmission
2.5L LCV Engine Control Module Manual Transmission
3.6L LFX Engine Control Module
3.6L LFX Engine Control Module Automatic Transmission
3.6L LFX Engine Control Module Manual Transmission

Savana 2014~2016 Engine Sensor Added

4.3L LU3 Engine Control Module
4.8L L20 Engine Control Module
5.3L LMF Engine Control Module

6.0L L96 Engine Control Module
6.0L LC8 Engine Control Module
6.6L LGH Engine Control Module

Sierra 2014~2016 Engine Sensor Added

4.3L LV1 Engine Control Module
4.3L LV3 Engine Control Module
5.3L L83 Engine Control Module
6.0L L96 Engine Control Module
6.0L LC8 Engine Control Module
6.2L L86 Engine Control Module
6.6L LML Engine Control Module

Sierra HD 2014 Engine Sensor Added

6.0L L96 Engine Control Module
6.0L LC8 Engine Control Module
6.6L LML Engine Control Module

Terrain 2010~2016 Engine Sensor Added

2.4L LAF Engine Control Module
2.4L LEA Engine Control Module
3.0L LF1 Engine Control Module
3.0L LFW Engine Control Module
3.6L LFX Engine Control Module

Yukon 2014~2016 Engine Sensor Added

5.3L L83 Engine Control Module
5.3L LMG Engine Control Module
6.2L L86 Engine Control Module
6.2L L94 Engine Control Module

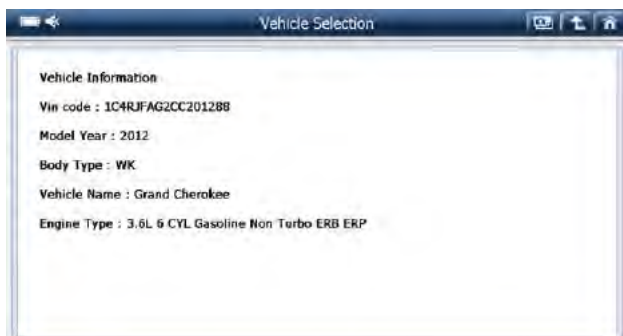
Yukon XL 2014~2016 Engine Sensor Added

5.3L L83 Engine Control Module
5.3L LC9 Engine Control Module
5.3L LMG Engine Control Module
6.2L L86 Engine Control Module
6.2L L94 Engine Control Module

[Back to Index](#)

CHRYSLER/JEEP/DODGE

Auto selection Function Added (2005 ~ 2016 year)



Wrangler (2007~2016) New System added

- ASBS (Auto Sway Bar System)
 - Basic Function
 - DTC Analysis
 - ECU Info
 - Special Function
 - Actuate Smart bar Motor

GRAND CHEROKEE (2012) New Function added

- CGW (Central Gateway)
 - Special Function

Module Installation
Relearn TIPM VIN

Wrangler (2015~2016) New Function added

- ABS (Anti Brake System)
 - Special Function
 - Bleed brakes

Wrangler (2000~2005) New Function added

- PCM (Power Control Module)
 - Special Function
 - Check VIN (VIN writing)

Wrangler (2007~2016) New Function added

- CGW (Central Gateway)
 - Special Function
 - Program Tire Size

Feedback

- AUS: Caliber - PCM Bug fixed
- USA: Avenger - PCM Misfire sensor data added
- USA: RAM 2500 - DPF regeneration added
- AUS: Wrangler - PCM Injector coding added
- USA: 300 - PCM Misfire sensor data added
- IRAQ: Grand Cherokee - VIN writing function added
- AUS: Wrangler - Injector coding bug fixed
- JPN: Wrangle - ORC, CCN, and WCM sensor data bug fixed
- USA: Ram 3500 - PCM sensor data bug fixed, ABS sensor data added

[Back to Index](#)

PERODUA

Menu Structure Modified

EFI System

- Special Function added
 - Reset Memory

Feedback: VIVA, EJ-VE, L251

[Back to Index](#)

OPEL / GM BRAZIL

New Model & System added

- Astra-G / Zafira New Type added
Engine X 20 DTL
- Astra-H New Type added
Engine Z 19 DT
- Astra-G New Type added
Engine X 16 XEL
- Corsa-D New Type added
Immobiliser
Central Door Lock
Anti Theft Warning System
Heating Ventilation and Air Cond.
Wipers/Washer
Interior Lighting
Exterior Lighting
BCM (Body Control Module)

- Astra-J New Type added (2014)

- Powertrain
- Engine Control Module 1.3L (LSF)
 - Engine Control Module 1.4L (LDD)
 - Engine Control Module 1.4L (LUJ)
 - Engine Control Module 1.6L (LDE)
 - Engine Control Module 1.6L (LLU)
 - Engine Control Module 1.6L (LVL)
 - Engine Control Module 1.6L (LVM)
 - Engine Control Module 1.6L (LVP)
 - Engine Control Module 1.6L (LWC)
 - Engine Control Module 1.7L (LKR)
 - Engine Control Module 1.7L (LUD)
 - Engine Control Module 1.7L (LUE)
 - Engine Control Module 1.8L (2H0)
 - Engine Control Module 2.0L (LBS)
 - Engine Control Module 2.0L (LBX)
 - Engine Control Module 2.0L (LBY)
 - Engine Control Module 2.0L (LHU)

- Insignia New Type added(2014,2015,2016,2017)

- Powertrain
- Engine Control Module 1.4L (LUJ)
 - Engine Control Module 1.6L (LVP)
 - Engine Control Module 1.6L (LWC)
 - Engine Control Module 1.8L (2H0)
 - Engine Control Module 2.0L (LBQ)
 - Engine Control Module 2.0L (LBR)
 - Engine Control Module 2.0L (LBS)
 - Engine Control Module 2.0L (LBY)
 - Engine Control Module 2.0L (LHV)
 - Engine Control Module 2.0L (LTG)

- Engine Control Module 2.0L (LFS)
- Engine Control Module 2.8L (LAU)
- Engine Control Module 1.6L (LVL)

- Zafira-C New Type added

- Powertrain
Chassis Control Module
- Chassis
Electronic Brake Control Module
Distance Sensing Cruise Control Module
Parking Brake Control Module
Multi-Axis Acceleration Sensor Module
Power Steering Control Module
Steering Wheel Angle Sensor Module
Suspension Control Module
- Body
Body Control Module
Inflatable Restraint Sensing and Diagnostic Module
Instrument Cluster
Trailer Interface Control Module
Radio
Headlamp Control Module
Chime Alarm Control Module
Trailer Interface Control Module
Remote Heater and Air Conditioning
Parking Assist Control Module
Vehicle Direction Camera Control
HVAC Control Module
Front Seat Heating Control Module
Frontview Camera Module

Feedback

- Astra-G / Zafira Engine New Type Added : Requested by Israel
- Astra-H engine New Type Added : Requested by Belgium
- Astra-G Engine New Type Added : Requested by UAE
- Corsa-D New Type Added : Requested by South Africa
- Astra-J 2014 Engine : Requested by Israel

[Back to Index](#)

MAHINDRA

New function added

- SECURITY SYSTEM
IMMOBILIZER
Special Function
Key Assignment

Mahindra Commercial added

- ENGINE
MTBL A34

Basic function
 DTC Analysis
 Data Analysis
 ECU Information Display
 Special Function
 Write Vehicle Speed Set Point
 Write VIN

DTC Analysis
 Data Analysis

ABS
 Hydraulic
 Basic function
 DTC Analysis
 Data Analysis

ENGINE

MTBLA36
 Basic function
 DTC Analysis
 Data Analysis
 ECU Information Display
 Special Function
 Write Vehicle Speed Set Point
 Write VIN
 Write Engine Serial Number

ABS
 KB
 Basic function
 DTC Analysis
 Data Analysis

[Back to Index](#)

SAIPA

ENGINE

LCV CRDe
 Special Function
 Write Speed Limit

CHANGAN CS35

ENGINE

- Special Function
 Write VIN
 Hardware reset
 On-Off key reset
 Reset all learn values of ECU
 Reset long term fuel trim learn values

ENGINE

MDI LLCR
 Special Function
 Write Speed Limit

AT

- Special Function added
 Write VIN
 Write ECU installation date
 Clear EEPROM data-Learned value

ENGINE

C39 C08
 Basic function
 DTC Analysis
 Data Analysis
 Actuation Test
 ECU Information Display
 Special Function
 Write VIN
 Read IQA Code
 Write IQA Code

ABS

- Special Function added

ENGINE

Delphi DCM 2.5
 Basic function
 DTC Analysis
 Data Analysis
 Actuation Test
 ECU Information Display
 Special Function
 Write Parameter
 Write C3I Values

SRS

- Special Function added
 Write date of last service
 Write VIN
 Write Enable/disable firing of ECU
 Write date of production
 Write ECU configuration
 Software reset

ABS

Pneumatic
 Basic function

BCM

- Special Function added
 Self-test
 Steering angle sensor calibration
 ECU reset

Write VIN

CHANGAN EADO ENGINE

- Special Function
 - Repair ship code or tester serial number
 - Programming date
 - ECU reset
 - Write VIN

AT

- Special Function added
 - Write VIN
 - Write ECU installation date
 - Clear EEPROM data-Learned value

ABS

- Special Function added
 - Vehicle configuration
 - IIS calibration
 - Hardware reset
 - Hydraulic filling indicator
 - Supplier identification
 - Programming date

SRS

- Special Function added
 - ECU reset
 - Write date of production
 - Write VIN
 - Write ECU configuration

- Electronic Stability Program
- Infotainment System
- Window Winder Control System
- Reverse Parking System

INDICA added

- Engine Management System
- Anti-Lock Braking System

INDICO added

- Engine Management System
- Anti-Lock Braking System

MANZA added

- Engine Management System
- Body Control Module
- Antitheft System
- Airbag System
- Anti-Lock Braking System

MANZA CLUB CLASS added

- Engine Management System
- Body Control Module
- Antitheft System
- Airbag System
- Anti-Lock Braking System

TIAGO added

- Engine Management System
- Instrument Panel Cluster System
- Electrical Power Assisted Steering

- Body Control Module
- Head Unit Control System
- Airbag System
- Anti-Lock Braking System
- Park Distance Control System

ZEST added

- Engine Management System
- Instrument Panel Cluster System
- Electrical Power Assisted Steering
- Antitheft System
- Body Control Module
- Head Unit Control System
- Airbag System
- Anti-Lock Braking System
- Fully Automatic Temperature Control System
- Park Distance Control System

[Back to Index](#)

TATA

New model added

BOLT added

- Engine Management System
- Instrument Panel Cluster System
- Electrical Power Assisted Steering
- Antitheft System
- Body Control Module
- Head Unit Control System
- Airbag System
- Anti-Lock Braking System
- Fully Automatic Temperature Control System

HEXA added

- Engine Management System
- Anti-Theft Management System
- Body Control Management System
- Instrument Cluster Management System
- Airbag Management System

[Back to Index](#)

HOLDEN

New system added

VE Commodore V6 SIDI

- Basic function
 - DTC Analysis
 - Data Analysis
 - Actuation Test
 - ECU Information Display
- Support function
 - Program immobilizer function
 - ECM Reset
 - Fuel trim reset
 - Idle learn reset
 - Oil life reset
 - Crankshaft position system variant

New functions added

ABS

- Basic function
 - Data Analysis

Bug fixed

AT: Communication stabilized

[Back to Index](#)

PROTON

New Model & System added

- Persona NFE

- Immo
 - Special Function
 - Immo and Alarm Coding

- SAGA NFE

- Immo
 - Special Function
 - Immo and Alarm Coding

- IRIZ

- Immo
 - Special Function
 - Immo and Alarm Coding

[Back to Index](#)

ETC.

G-scan2

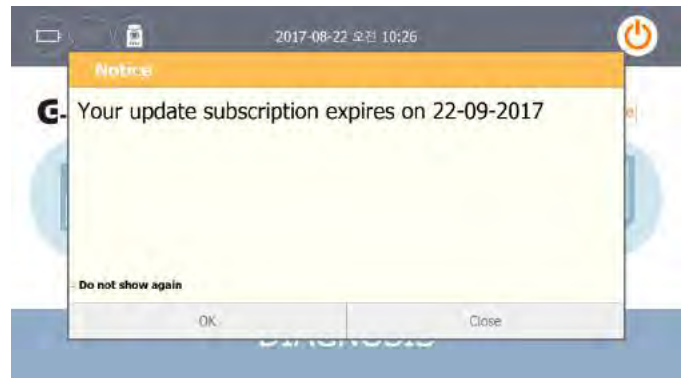
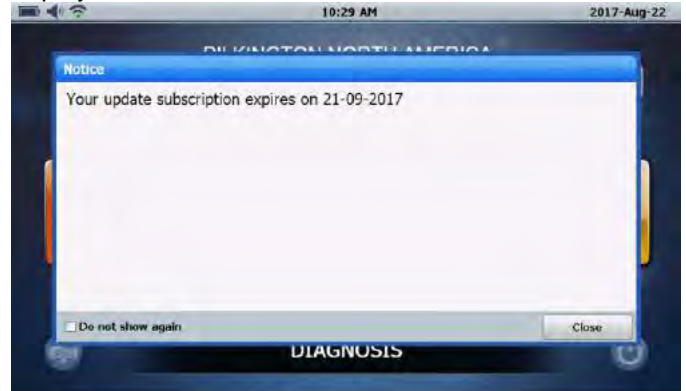
Wifi network improved

G-scanTab

Firmware Update function improved

G-scan2 / G-scanTab

Update subscription expiry date will be alarmed and displayed



[Back to Index](#)

END