



MAGNETI MARELLI ALL MAKES DIAGNOSTIC SCAN TOOLS

SPECIAL FUNCTIONS

Magneti Marelli's diagnostic scan tools include monthly software updates and outstanding coverage for domestic and import vehicles.

Easy Fix

Provides wiring diagrams and a dynamic service manual, that guides the user step by step to the solution reducing the time required to identify vehicle concerns.

OK Functions

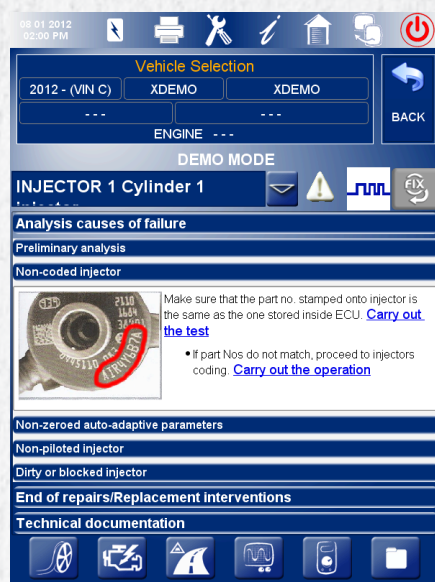
Allows users to simply select an activity (i.e. the TPMS re-learn, steering wheel reset, etc.) and the tool will automatically perform the correct procedure.

Easy Scope

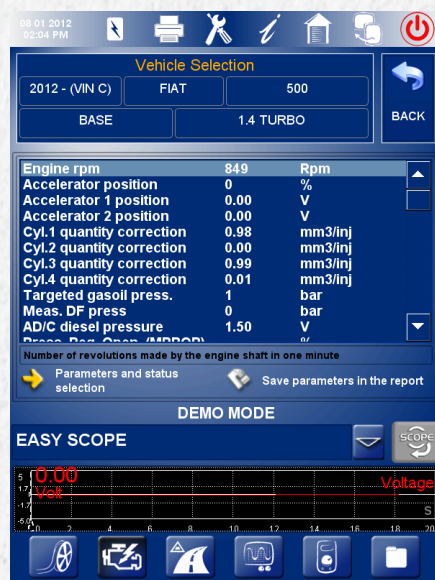
Features built-in benchmark parameters which enable technicians to compare the correct wave forms to verify the accuracy of the data. Also includes a guide for the automatic configuration of the scope / multimeter.

Plus +

Provides reference data to enable technicians to immediately compare their results with the correct parameters.



Easy Fix



Easy Scope



MAGNETI MARELLI ALL MAKES DIAGNOSTIC SCAN TOOLS



**Magneti Marelli Holding U.S.A., Inc.,
d/b/a: Magneti Marelli Aftermarket**

3900 Automation Avenue
Auburn Hills, MI 48326 USA

email: aftermarket-diagnostics-us@magnetimarelli.com
www.magnetimarelli-aftermarket.us

Magneti Marelli now offers high quality vehicle diagnostic scan tools for all vehicle makes & models. Developed with technician's needs in mind, Magneti Marelli's easy-to-use testers enable you to quickly identify, isolate and repair a variety of vehicle concerns.

Created by leveraging years of Magneti Marelli worldwide technical know-how, these new diagnostic tools pack a variety of special features into lightweight compact designs, perfect for automotive repair facilities.

All Magneti Marelli diagnostic products are provided with monthly updates and include coverage on Domestic, European and Asian vehicles. Best coverage in the market (2010-2012).

Magneti Marelli FLEX

The Magneti Marelli Flex has been chosen by the Chrysler Training Academy for conducting vehicle diagnosis and training future technicians on all makes and models in every Chrysler Training Center across the US. It features:

- State-of-the-art built-in 2 channel high speed oscilloscope and multimeter.
- J2534-1 and J2534-2 compliant.
- Full professional grade diagnostics: parameters, statuses, error codes, activations, encoding of components, technical schematics, reports, recording of tests.
- The oscilloscope can capture the wave form for later PC analysis and comparison.
- Professional Scope Kit and Accessories.
- Lightweight and compact unit with anti-skid, shock resistant, dust resistant, moisture resistant (IP 54).
- VCI with stand-alone capability through a 3" screen.
- Innovative, integrated, diagnostic system with oscilloscope/multimeter and split screen.
- Connects to PC via USB, Bluetooth, or WiFi.

Magneti Marelli VISION

This fully independent hand held portable diagnostic scan tool device features:

- Built-in 4 channel oscilloscope and multimeter with graphical results presentation.
- J2534-1 and J2534-2 compliant.
- 8" Touch screen
- Bluetooth capability.
- Full professional grade diagnostics: parameters, statuses, error codes, activations, encoding of components, technical schematics, reports, recording of tests.
- Displaying for images from an external endoscope directly on the Vision tester screen (optional).
- Linux operating system.
- Innovative, integrated, diagnostic system with oscilloscope/multimeter and split screen.
- Lightweight and compact unit with anti-skid, rubber protection, shock resistant, dust resistant, moisture resistant (IP 54).
- Internal battery charge via OBDII diagnostic connector and through a power supply adapter.



ALL MAKES DIAGNOSTIC SCAN TOOLS

Quick and Easy Diagnosis



Magneti Marelli SMART

This fully independent and compact diagnostic scan tool features:

- Full professional grade diagnostic capabilities
- Clear and easy-to-read color LCD display

Magneti Marelli LOGIC

This diagnostic scan tool features:

- Full professional grade diagnostic capabilities
- VCI-PC-ready
- Bluetooth / USB capability
- Built-in electronic multiplexer

Magneti Marelli OBD ROAD

This on-board "flight recorder" saves parameters and errors while the vehicle is in operation and features:

- Real time OBD2 diagnosis
- Recording capability of 8 parameters (sampling time 5 seconds) for a period of 170 hours
- USB 2.0 port for PC connection

For information on Product availability, distribution and technical features, please email us at:
aftermarket-diagnostics-us@magnetimarelli.com