

G-scan2 / G-scan3 / G-scanTab

Software Release Highlights

September 2020



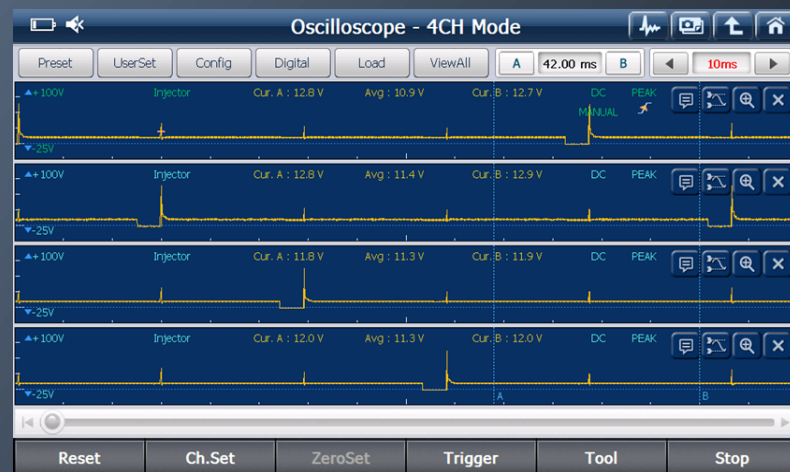
G-scan 3



G-scanTab



G-scan 2



North American Master Distributor

CAS : 1-877-263-4897

www.OEMTools.com



G-scan2 & G-scan3 Software Release Bulletin

September 2020 Update

Sep 15, 2020

TOYOTA/LEXUS	2	CHRYSLER/JEEP/DODGE	2
NISSAN/INFINITI.....	2	OPEL / VAUXHALL.....	2
HONDA /ACURA	2	HOLDEN.....	2
MITSUBISHI.....	2	MERCEDES COMMERCIAL	2
MAZDA	2	SSANGYONG.....	2
SUZUKI/MARUTI.....	2	SMART	2
SUBARU	2	ASIAN TRUCKS.....	2
ISUZU.....	2	TATA	2
FUSO.....	2	New Features and Functions.....	2
AUDI/VW/SEAT/SKODA.....	2		
FORD EU	2		
RENAULT / DACIA	2		
BMW	2		
LAND ROVER	2		
JAGUAR.....	2		
MERCEDES BENZ.....	2		
FIAT / ALFA ROMEO / LANCIA.....	2		
PEUGEOT.....	2		
CITROEN.....	2		
VOLVO	2		
PORSCHE	2		
FORD USA	2		
GM USA.....	2		

For more information, please email sales@OEMTools.com or call 1-877-263-4897

TOYOTA/LEXUS

New type system & function added (Total 7 system)

- Engine
- Four Wheel Drive
- Tire Pressure Monitor
- AHS
- Rear Motor Generator
- Radar Cruise1
- EMPS

[Back to Index](#)

Improved function & bug fixed

[Back to Index](#)

MITSUBISHI

New type system & function added (5 Vehicles)

- ASX
- DELICA D:5
- eK-SPACE
- MIRAGE / SPACE STAR
- PAJERO / MONTERO

[Back to Index](#)

NISSAN/INFINITI

New type engine system added (2 vehicles)

- QASHQAI
- X-TRAIL

Improved function & bug fixed

[Back to Index](#)

MAZDA

- FSC Aiming
- Part Number added

[Back to Index](#)

HONDA /ACURA

New type system & function added (Total 16 system)

- Engine
- IDSS (Integrated Driver Support System)
- IMA : Japan
- BCM_Gauge : Costa Rica
- BCM_HF LINK TEL : Costa Rica

FIT GR1 : Japan

- BCM_Telematics

CIVIC 2018 : AU

- BCM_Lighting
- BCM_Doorlocks
- BCM_Keyless
- BCM_Security
- BCM_Wiper
- BCM_HVAC
- BCM_Auto Light Leveling
- BCM_Parking Sensor
- BCM_Seat Heater

CITY 2020 : Taiwan

- BCM_HVAC

SUZUKI/MARUTI

New type system & function added (Total 22 system)

- Engine New Type added (CAN) 4 Types
- CNG/LPG
- AT/CVT/AGS
- ABS(VST/ESP)
- EPS(Electric Power Steering)
- SRS Airbag
- Air Conditioner
- BCM(Body Control Module)
- Keyless Start
- Meter
- TPMS(Tire Pressure Monitoring System)
- Radar Brake Support/Adaptive Cruise Control
- Idling Stop
- Dual Camera Brake Support
- Dual Sensor Brake Support
- Sonar
- ISG
- Auxiliary Power Module
- Auto Leveling

Improved function & bug fixed

[Back to Index](#)

SUBARU

Improved function & bug fixed

[Back to Index](#)

ISUZU

New type system & function added (Total 31 system)

- D-MAX 4JJ3-TCX ECM
- D-MAX 0152 4JK1 R3 R4
- D-MAX 4JK1 GRE
- D-MAX Idling stop system
- D-MAX Intelligent Battery Sensor
- D-MAX 4JJ3 – TCX AT
- D-MAX Transfer case module
- D-MAX Differential lock module
- D-MAX ABS_ESC
- D-MAX ABS_ESC R2
- D-MAX ABS_ESC R3
- D-MAX 4JJ3-TCX BCM
- D-MAX Central gateway
- D-MAX SRS Airbag
- D-MAX Meter
- D-MAX Navigation
- D-MAX Auto A/C
- D-MAX Parking aid
- D-MAX Radar sensor left
- D-MAX Radar sensor right
- D-MAX Headlamp
- D-MAX WAM_T1
- D-MAX WAM_T2
- D-MAX WAM_T3
- N Series VN73 4JJ1 Euro 4 CAN
- N Series VF61/VF62 4HK1 CAN Engine
- F/G Series ABS_ESC
- F/G Series ABS_ESC_AEBS
- F/G Series 6HK1 R15/R16
- F/G Series 6UZ1 B2.1 Engine R3
- C/E Series Smoother Gx

Improved function & bug fixed

[Back to Index](#)

FUSO

New vehicle & system added (3 vehicles)

- SUPER GREAT (17MODEL~) -
- SUPER GREAT (19.5MODEL)
- AERO ACE

[Back to Index](#)

AUDI/VW/SEAT/SKODA

New type system & function added (Total 7 system)

- 01-Engine Electronics (UDS)
- 03-Brake Electronics (UDS)
- 08-Auto HVAC (UDS)
- 55-Headlight Range Control (UDS)
- 5F-Information Electronics (UDS)
- 75-Telematics (UDS)
- 8B-Adaptive Cruise 2 (UDS)

New Maintenance function added (Total 2 system)

- Steering angle Learning
- Windshield camera

Improved function & bug fixed

[Back to Index](#)

FORD EU

New vehicle & system added (2 vehicles)

- ECOSPORT 1. EcoBoost - Gas Turbocharged Direct Injection 2016 ~ Vehicle Added
- FOCUS 1.5L EcoBoost - Gas Turbocharged Direct Injection 2020 ~ Vehicle Added

[Back to Index](#)

RENAULT / DACIA

New type system & function added (2 vehicles)

- Lodgy
- Dokker

Improved function & bug fixed

[Back to Index](#)

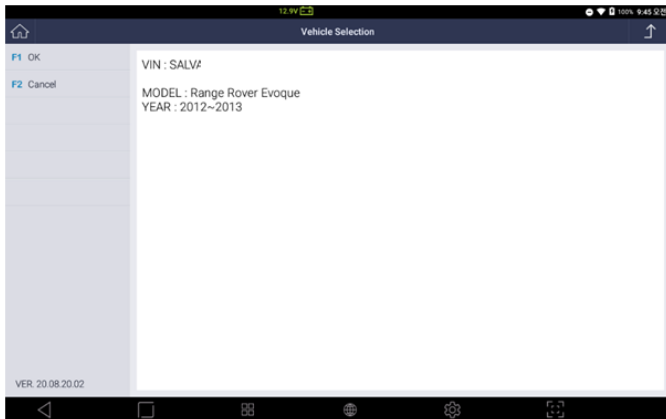
BMW

New type system & function added (13 vehicles)

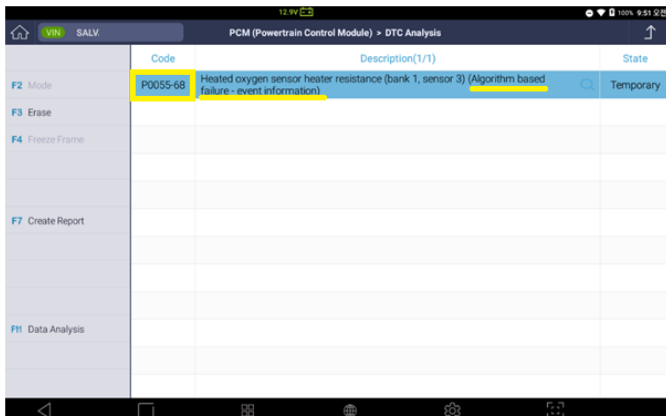
- 7 series - E38 (1994 - 2001)
- 1 series - E81 (2004 - 2010)
- 3 series - E90 (2006 - 2011)
- 5 series - E60 (2004 - 2009)
- 6 series - E63 (2004 - 2010)
- 1 series - F20/F21 (2011 - present)
- 2 series - F22/F23 (2014 - present)
- 2 series - F45/F46 (2014 - present)
- 3 series - F30/F31 (2012 - 2018)
- M4 - F82/F83 (2013 - present)
- M5 - F10 (2010 - 2016)
- 5 series - G30 (2017 - present)
- 7 series - G11/G12 (2016 - present)

[Back to Index](#)

LAND ROVER



Vehicle Auto Select function added



For more information, please email sales@OEMTools.com or call 1-877-263-4897

DTC Analysis function improved

- Sub-code & related information added
- All system DTC list added

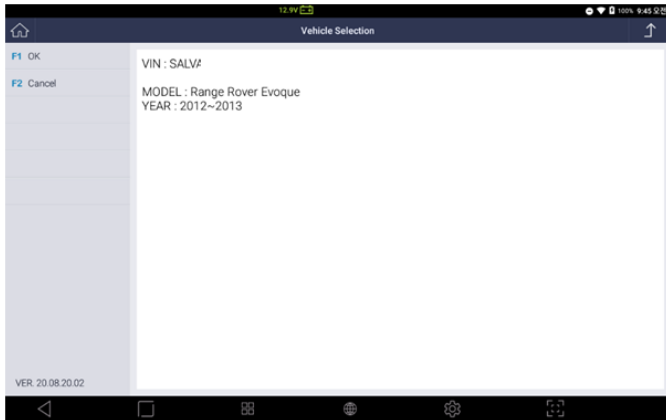
New type system & function added (17 vehicles)

- Range Rover 2007~2009
- Range Rover 2010~2012
- Range Rover 2013
- Range Rover 2014 ~ 2015
- Range Rover 2016
- Range Rover Sport 2006~2009
- Range Rover Evoque 2016
- Freelander2(LR2) 2007~2010
- Freelander2(LR2) 2011~2012
- Freelander2(LR2) 2013~2014
- Discovery 3 (LR3) 2005~2009
- Discovery 4 (LR4) 2010~2011
- Discovery 4 (LR4) 2012~2013
- Discovery 4 (LR4) 2014~2015
- Discovery 4 (LR4) 2016
- Discovery Sport 2015~2016
- Discovery Sport 2017

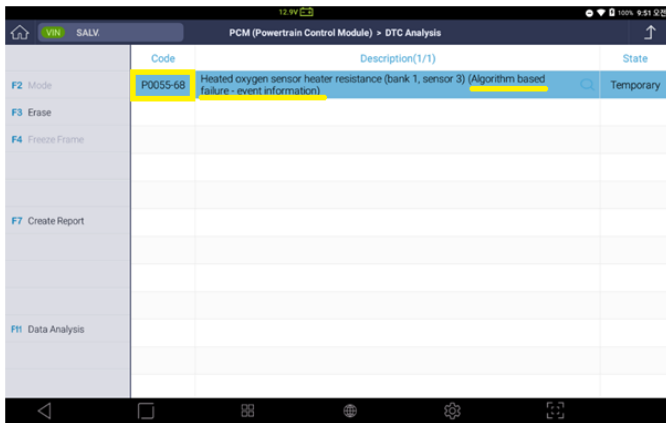
Improved function & bug fixed

[Back to Index](#)

JAGUAR



Vehicle Auto Select function added



DTC Analysis function improved

- Sub-code & related information added
- XF 2013 ~ 2015, Engine system DTC list added

[Back to Index](#)

MERCEDES BENZ

New type Chassis & function added (3 vehicles)

- EQA/EQB-CLASS (243)
- EQC-CLASS (293)
- AMG (298)

New type system & function added (33 vehicles)

- A-CLASS (177)
- B-CLASS (247)
- C-CLASS (204)
- C-CLASS (205)
- E-CLASS (207)
- E-CLASS (212)
- E-CLASS (213)
- E-CLASS (238)
- S-CLASS (221)

- S-CLASS (217)
- S-CLASS (222)
- G-CLASS (463 - 16P Connector)
- GLA-CLASS (247)
- GLB-CLASS (247)
- GLK-CLASS (204)
- GLC-CLASS (253)
- GLE-CLASS (167)
- GLS-CLASS (167)
- GL-CLASS (164)
- GL-CLASS (166)
- M-CLASS (164)
- M-CLASS (166)
- R-CLASS (251)
- CLA-CLASS (118)
- CLS-CLASS (218)
- CLS-CLASS (257)
- CL-CLASS (216)
- CL-CLASS (217)
- AMG GT (190)
- AMG GT (290)
- Sprinter (907)
- V-CLASS (447)
- X-CLASS (470/471)

Improved function & bug fixed

[Back to Index](#)

FIAT / ALFA ROMEO / LANCIA

DTC Analysis function improved

- Sub code & Status added

New type system & function added (Total 48 system)

- GIULIA ECM #1
- GIULIA ECM #2
- GIULIA ECM #3
- GIULIA ECM #4
- GIULIA EPS
- GIULIA ESM #1
- GIULIA ESM #2
- EGEA/TIPO ECM #1
- EGEA/TIPO ECM #2
- EGEA/TIPO ECM #3
- EGEA/TIPO ECM #4
- EGEA/TIPO ECM #5
- EGEA/TIPO EPS
- EGEA/TIPO IPC #1
- EGEA/TIPO IPC #2
- EGEA/TIPO HVAC
- 500X ECM #1

- 500X ECM #2
- 500X ECM #3
- 500X TCM
- 500X IPC
- 500X ETM
- 500X ESL
- 500X CSWM
- 500X ORC
- 500L ECM
- 500L TCM
- DUCATO ECM #1
- DUCATO ECM #2
- DUCATO ORC #1
- DUCATO ORC #2
- Cinquecento ECM
- Cinquecento IPC
- Cinquecento BCM
- DOBLO ECM #1
- DOBLO ECM #2
- DOBLO IPC
- PUNTO EVO ECM
- Fiorino/Qubo ECM
- Fiorino/Qubo BCM
- Fiorino/Qubo ORC
- MITO ECM
- TORO PCM
- TORO ORC
- PANDA PCM
- Ypsilon ECM
- Ypsilon IPC #1
- Ypsilon IPC #2

Improved function & bug fixed

[Back to Index](#)

PEUGEOT

New vehicle & system added (3 vehicles)

- 508L (R83) (2017~)
- 2008 (P24) (2017~)
- TRAVELLER (2016~)

[Back to Index](#)

CITROEN

Improved function & bug fixed

[Back to Index](#)

VOLVO

Improved function & bug fixed

[Back to Index](#)

PORSCHE

New vehicle & system added (4 vehicles)

- 911 (992) (2019 ~)
- Cayenne (9YA) (2018~)
- Cayman(981) (2013~2016)
- Boxster(981) (2012~2016)

[Back to Index](#)

FORD USA

New vehicle & system added (1 vehicle)

- FOCUS 2.3L EcoBoost - Gas Turbocharged Direct Injection 2015 ~

[Back to Index](#)

GM USA

New vehicle & system added

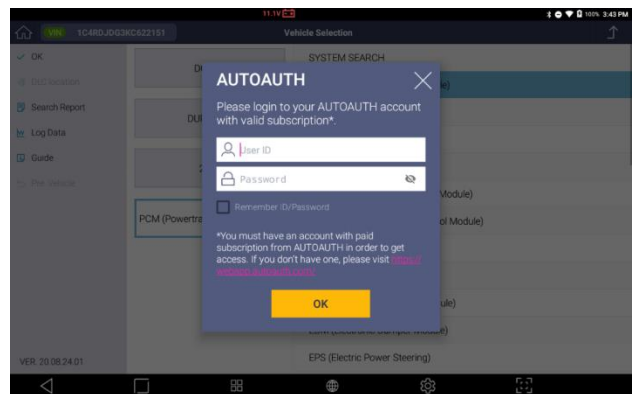
- CHEVROLET (66 vehicles)
- Aveo 3G1 2020
- Aveo 8LA 2020
- Aveo 8Z1 2020
- Aveo 9GA 2020
- Aveo KL1JD 2020
- Aveo KL1JJ 2020
- Aveo KL1JH 2020
- Aveo KL1JM 2020
- Aveo KL1SA 2020
- Aveo KL1TA 2020
- Aveo KL1TD 2020
- Aveo KL1TF 2020
- Aveo KL1TJ 2020
- Aveo KL1TM(Sedan) 2020
- Aveo KL1TM(Hatchback) 2020
- Aveo KLA 2020

- Aveo LSG 2020
- Aveo RLL 2020
- Aveo XUF 2020
- Beat 2020
- Blazer 2020
- Bolt 2020
- Camaro 2020
- Cavalier 2020
- Cobalt 2020
- Colorado 1GC 2020
- Colorado 1GB 2020
- Colorado MMM 2020
- Cruze 2020
- Damas 2020
- Equinox 2020
- Express 2020
- Impala 2020
- Labo 2020
- Labo 2020
- Malibu 2020
- Max 2020
- Move 2020
- Onix 2020
- Optra 2020
- Prisma 2020
- S10 2020
- Sail 8LA 2020
- Sail 9GA 2020
- Sail LSGSA 2020
- Sail LSGHD 2020
- Sail MA6 2020
- Sonic 2020
- Sonic 2020
- Spark 9GAMM 2020
- Spark 9GAMF 2020
- Spark ADM 2020
- Spark KL1 2020
- Spark KL8 2020
- Spark KLY 2020
- Spark MA6C 2020
- Spark MA6M 2020
- Spark RLL 2020
- Spark XWB 2020
- Spin 2020
- Suburban 2020
- Tahoe 2020
- Tracker 2020
- Trailblazer 2020
- Traverse 2020
- Trax 2020
- Buick (5 vehicles)
- Enclave 2020
- Encore M Product Line 2020
- Encore C Product Line 2020

- Envision 2020
- Regal 2020
- Cadillac (7 vehicles)
- CT6 2020
- Escalade 2020
- Escalade ESV 2020
- XTS 2020
- XT4 2020
- XT5 2020
- XT6 2020
- GMC (7 vehicles)
- Acadia 2020
- Canyon 2020
- Savana 2020
- Sierra 2020
- Terrain 2020
- Yukon 2020
- Yukon XL 2020

[Back to Index](#)

CHRYSLER/JEEP/DODGE



SGW (Security Gateway) access function added

- 2018/2019/2020 300
- 2018/2019/2020 PACIFICA
- 2018/2019/2020 DURANGO
- 2018/2019/2020 GRAND CHEROKEE
- 2018/2019/2020 CHARGER
- 2018/2019/2020 JOURNEY
- 2018/2019/2020 CHALLENGER
- 2018/2019/2020 GRAND CARAVAN
- 2018/2019/2020 RAM1500
- 2018/2019/2020 RAM2500
- 2018/2019/2020 RAM3500
- 2018/2019/2020 CHEROKEE
- 2018/2019/2020 WRANGLER
- 2019/2020 GLADIATOR

For more information, please email sales@OEMTools.com or call 1-877-263-4897

- 2018/2019/2020 RENEGADE

* Available in the U.S.A. only

New vehicle & function added (16 vehicles)

- 2018-2020 300
- 2018-2020 PACIFICA
- 2020 DURANGO
- 2018-2020 CHARGER
- 2018-2020 JOURNEY
- 2018-2020 CHALLENGER
- 2018-2020 GRAND CARAVAN
- 2018-2020 RAM1500
- 2017-2020 RAM2500
- 2018-2020 RAM3500
- 2019-2020 CHREOKEE
- 2020 GRAND CHEROKEE
- 2019-2020 WRANGLER
- 2019-2020 GLADIATOR
- 2019-2020 COMPASS
- 2019-2020 RENEGADE

Improved function & bug fixed

[Back to Index](#)

OPEL / VAUXHALL

New type system & function added (74 vehicles)

- Agila Engine (Z 13 DT)
- Agila Engine (Z 12 XEP)
- Corsa-C Engine (Z 13 DT)
- Corsa-D Engine (A 12 XEL)
- Corsa-D Engine (A 12 XER)
- Corsa-D Engine (A 13 DTR)
- Corsa-D Engine (A 14 XER)
- Corsa-D Engine (Z 16 LER)
- Vectra-C Engine (Y 22 DTR)
- 2010 Astra-J Engine (1.6L LDE)
- 2011 Astra-J Engine (1.6L LDE)
- 2013 Antara Engine (2.2L LNQ)
- 2013 Insignia Engine (1.4L LUJ)
- 2013 Insignia Engine (2.0 LBY)
- 2013 Insignia Engine (2.0 LHU)
- 2013 Insignia Engine (2.0L LHV)
- 2013 Insignia Suspension control Module
- 2013 Insignia Transmission Control Module
- 2013 Mokka Engine (1.4L LUJ)
- 2014 Meriva-B Digital Radio Receiver Control Module
- 2014 Meriva-B Engine (1.3L LDV)
- 2014 Meriva-B Engine (1.3L LSF)
- 2014 Meriva-B Engine (1.4L LUH)
- 2014 Meriva-B Engine (1.4L LUJ)

- 2014 Meriva-B Engine (1.6L LVL)
- 2014 Meriva-B Engine (1.6L LVM)
- 2014 Meriva-B Engine (1.7L LPL)
- 2014 Meriva-B Front Seat Heating Control Module
- 2014 Meriva-B Fuel Injector Control Module
- 2014 Meriva-B Headlamp Control Module
- 2014 Meriva-B Parking Assist Control Module
- 2014 Meriva-B Power Steering Control Module
- 2014 Meriva-B Radio (Chime UL5)
- 2014 Meriva-B Radio (Radio)
- 2014 Meriva-B Trailer Interface Control Module
- 2014 Meriva-B Transmission Control Module
- 2014 Mokka Engine (1.4L LUJ)
- 2015 Corsa-E Electronic Brake Control Module
- 2015 Corsa-E Engine (1.0L LE1)
- 2015 Corsa-E Engine (1.3L LKU)
- 2015 Corsa-E Engine (1.3L LKV)
- 2015 Corsa-E Engine (1.4L LUJ)
- 2015 Corsa-E Engine (1.6L LLU)
- 2015 Corsa-E Engine (Sensor 1.2L LDC)
- 2015 Corsa-E Engine (Sensor 1.4L LDD)
- 2015 Corsa-E Engine (Switch_E80W 1.2L LDC)
- 2015 Corsa-E Engine (Switch_E80W 1.4L LDD)
- 2016 Astra-K Electronic Brake Control Module
- 2016 Corsa-E Electronic Brake Control Module
- 2016 Corsa-E Engine (1.0L LE1)
- 2016 Corsa-E Engine (1.4L LDD)
- 2016 Corsa-E Engine (1.4L LUJ)
- 2016 Corsa-E Engine (1.6L LLU)
- 2016 Corsa-E Power Steering Control Module
- 2016 Mokka Engine (1.4L LUJ)
- 2016 Mokka Engine (1.8L 2H0)
- 2017 Corsa-E Engine 1.6L LLU
- 2017 Corsa-E Engine 1.0L LE1
- 2017 Corsa-E Engine 1.2L LDC
- 2017 Corsa-E Engine 1.3L LKU
- 2017 Corsa-E Engine 1.3L LKV
- 2017 Corsa-E Engine 1.4L LDD
- 2017 Corsa-E Engine 1.4L LUJ
- 2017 Corsa-E Engine Not Equipped / Other 1.0L LE1
- 2017 Corsa-E Engine Not Equipped / Other 1.2L LDC
- 2017 Corsa-E Engine Not Equipped / Other 1.3L LKU
- 2017 Corsa-E Engine Not Equipped / Other 1.3L LKV
- 2017 Corsa-E Engine Not Equipped / Other 1.4L LUJ
- 2018 Corsa-E Engine 1.0L LE1
- 2018 Corsa-E Engine 1.2L LDC
- 2018 Corsa-E Engine 1.3L LKU
- 2018 Corsa-E Engine 1.4L LDD
- 2018 Corsa-E Engine 1.4L LUJ
- 2018 Corsa-E Engine 1.6L LLU

Improved function & bug fixed

[Back to Index](#)

HOLDEN

New type system & function added (Total 2 system)

- VE Commodore IPC
- VE Commodore V8 engine

Improved function & bug fixed

[Back to Index](#)

- SML Isuzu > BSIV CNG A34 Engine : India
- SML Isuzu > BSIV CNG A36 Engine : India
- SML Isuzu > ABS Air : India
- SML Isuzu > ABS Hydraulic : India

[Back to Index](#)

MERCEDES COMMERCIAL

Improved function & bug fixed

[Back to Index](#)

TATA

DTC Analysis function improved (1 vehicle)

STORME : India

- DTC Current/History function added

[Back to Index](#)

SSANGYONG

New type system & function added (1 vehicle)

KORANDO C

- AIRBAG - Continental

[Back to Index](#)

SMART

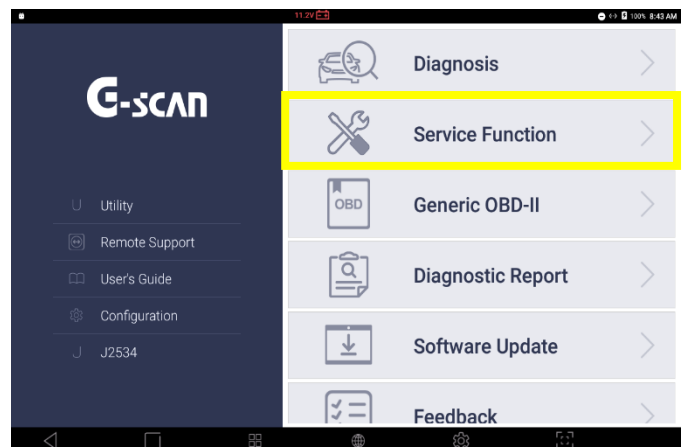
New type system & function added (3 vehicles)

- FORTWO (450)
- ROADSTER (452)
- FORFOUR (454)

Improved function & bug fixed

[Back to Index](#)

New Features and Functions

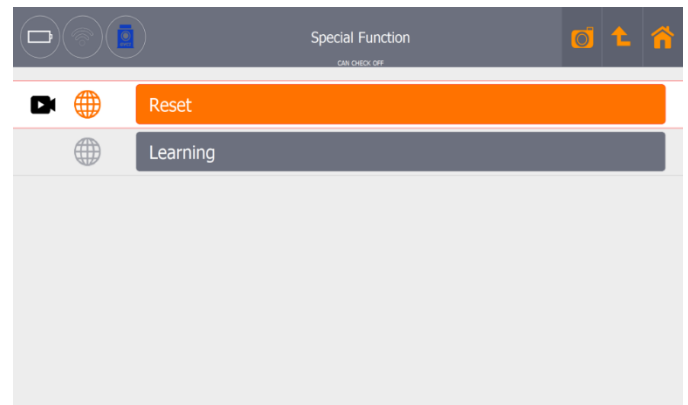
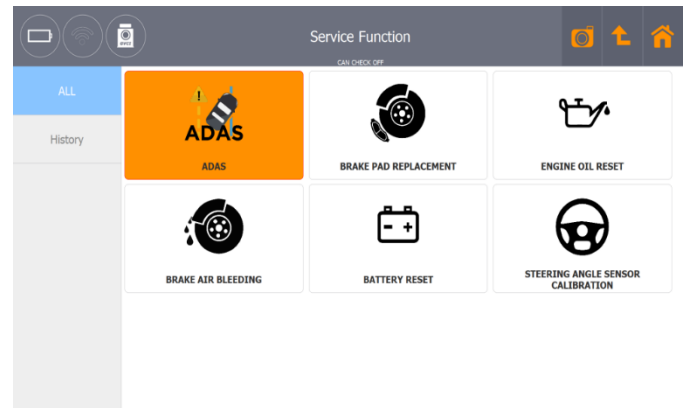
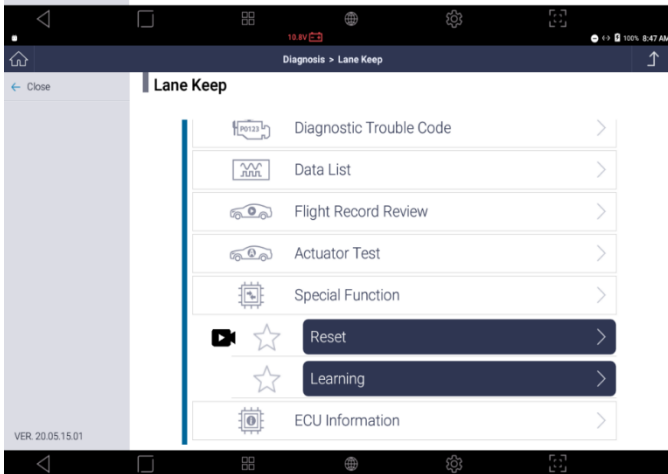
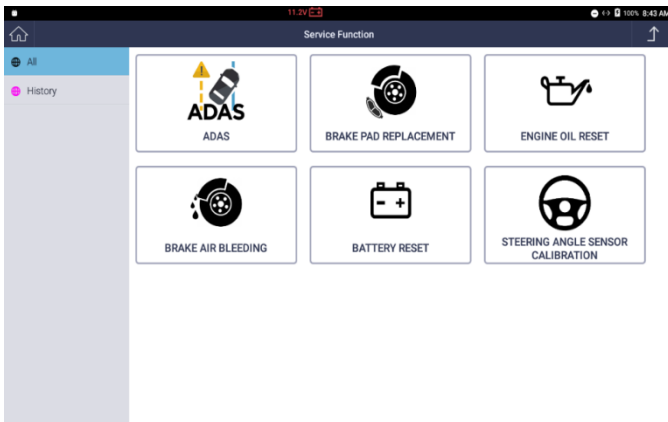


ASIAN TRUCKS

New type system added (Total 7 system)

- Bharat Benz > BSIII EMS Engine : India
- Bharat Benz > BSIV EMS Engine : India
- SML Isuzu > BSIV Diesel Engine : India

For more information, please email sales@OEMTools.com or call 1-877-263-4897

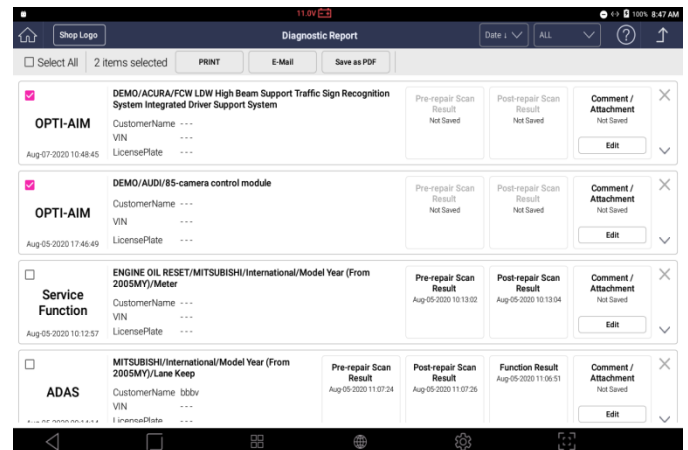


G-scan3 Service Function added

- If tutorial video is available for specific function, video icon is displayed in front of the function. The icon contains the link to the video.


G-scanTab Service Function added

- If tutorial video is available for specific function, video icon is displayed in front of the function. The icon contains the link to the video.

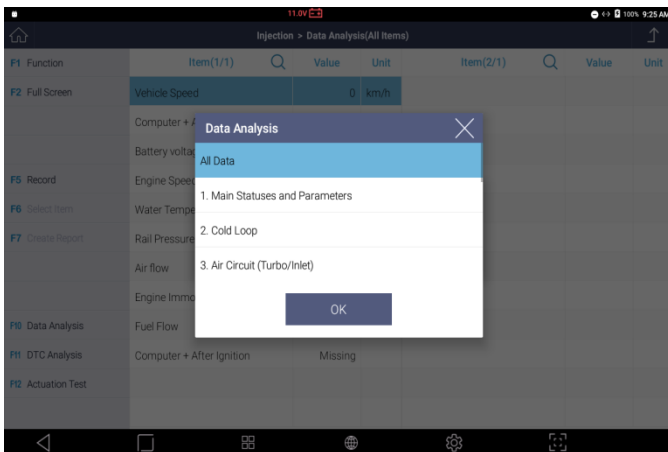


Diagnostic Report function improved

- You can now select multiple reports and send them via E-mails, print them and save as PDF format at once.



F1 Function	Item(1/12)	Value	Unit	Item(2/12)	Value	Unit
F2 Full Screen	Vehicle Speed	0	km/h	Air Conditioning Authorisation		
	Computer + After Ignition	Missing		Water Temperature	190	°C
	Battery voltage	4.63	V	Coolant Temperature Sensor Voltage	2.30	V
F5 Record	Engine Speed	1000	rpm	Refrigerant Pressure		bar
F6 Select Item	Water Temperature	190	°C	Refrigerant Pressure Sensor Voltage		V
F7 Create Report	Rail Pressure	6	bar	Vehicle Speed	0	km/h
	Air flow	0.0	kg/h	Engine Speed	1000	rpm
	Engine Immobiliser	Inactive		Water Temperature	190	°C
	Fuel Flow		mg/st	Inlet air temperature		°C
F10 Data Analysis	Idle Speed Reference		rpm	Atmospheric Pressure		mbar
F11 DTC Analysis	Engine Speed	1000	rpm	Boost pressure reference value	752	mbar
F12 Actuation Test	Vehicle Speed	0	km/h	Boost pressure	749	mbar



Data Analysis function improved

- Re-selecting sensor group is now more convenient than before.

[Back to Index](#)