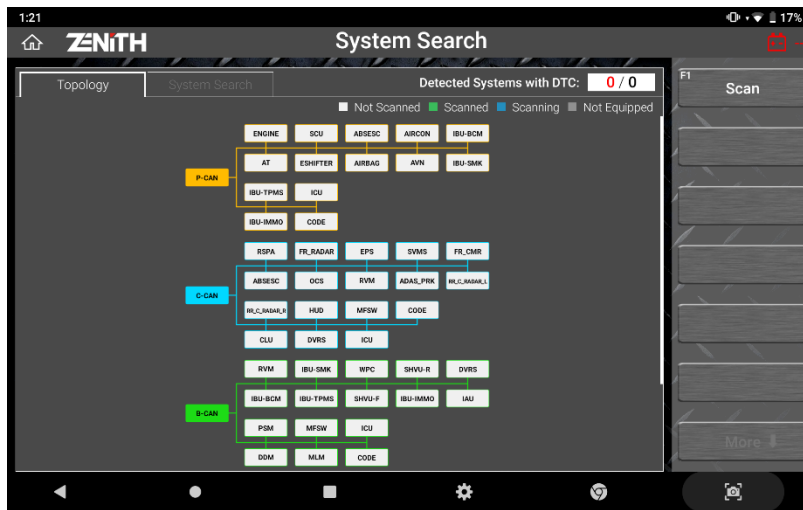


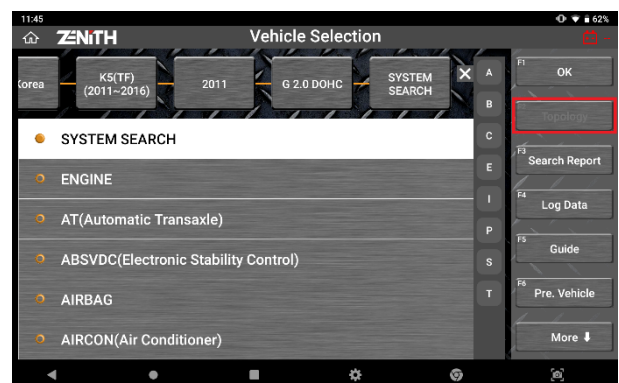
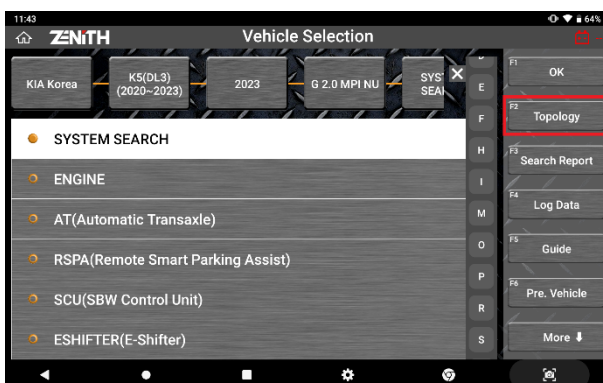
Zenith Z5 Topology Function



The Topology function supported by Zenith Z5 visualizes the structure and hierarchy of the in-vehicle network control modules and check the fault codes of each system (Z5 Only).

Supported Carlines

When the May 2023 update applies to a Zenith Z5, Topology function will be supported for the following carlines: AUDI/VW, BMW/MINI, CHRYSLER/JEEP/DODGE, FIAT/ALFA ROMEO/LANCIA, FORD EU, FORD USA, HYUNDAI/GENESIS, KIA, JAGUAR, LAND ROVER, MERCEDES BENZ.



The [Topology] button will be activated on the system selection screen when the vehicle model that supports Topology is selected. If not, the Topology button will remain deactivated.



CONNECTED AUTOMOTIVE SYSTEMS

PHONE: 877-263-4897

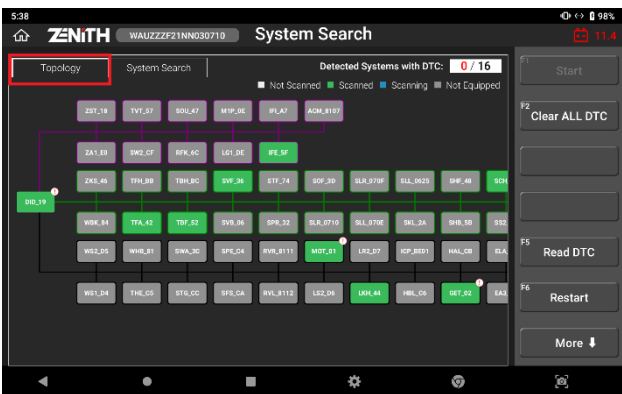
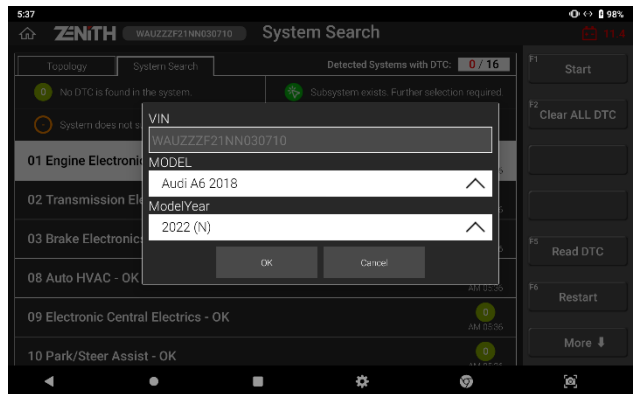
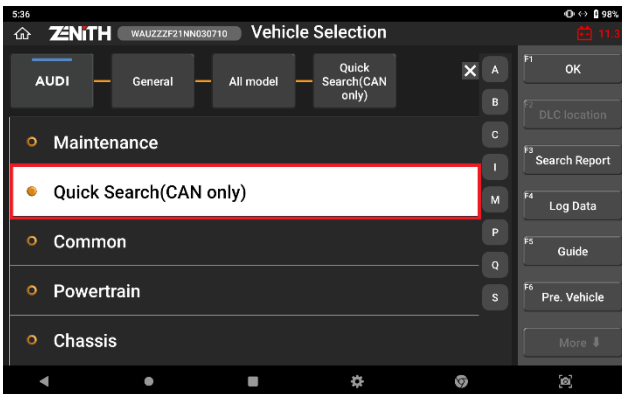
87 EASTMAN STREET, 2ND FLOOR

EASTON, MA 02375

WWW.OEMTOOLS.COM

AUDI/VW

Due to unique software structure of AUDI/VW, the function on these German carlines is designed to work differently from the others - you will be required to check and confirm the VIN, model name and model year of the vehicle to ensure that they are all correct. Then you can select the [Topology] tab in the upper left corner of the screen.



CONNECTED AUTOMOTIVE SYSTEMS

PHONE: 877-263-4897
87 EASTMAN STREET, 2ND FLOOR
EASTON, MA 02375
WWW.OEMTOOLS.COM