

G-scan 3 / Zenith Z5 / Zenith Z7 Release Highlights

January 2025



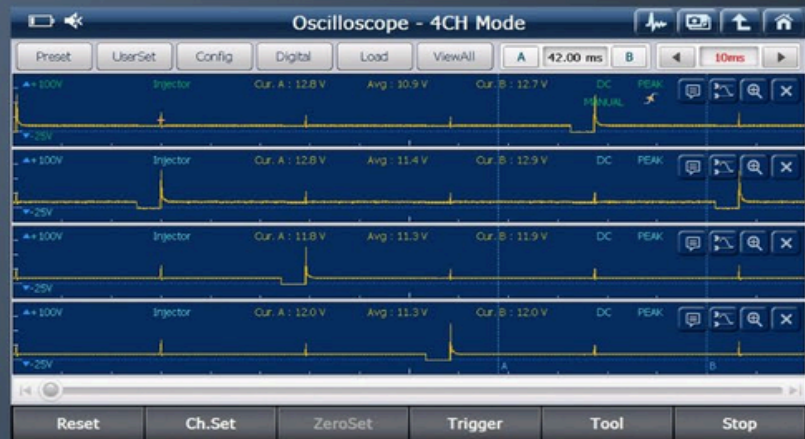
G-scan 3



ZENITH Z5



ZENITH Z7



North American Master Distributor

CAS : 1-877-263-4897

www.OEMTools.com



Zenith Distributor Bulletin

2025 Jan. Update Details

January 16, 2025

TOYOTA/LEXUS	2	HOLDEN	43
NISSAN/INFINITI.....	4	FORD AU	43
HONDA/ACURA	4	HYUNDAI/GENESIS/SEASALL.....	44
mitsubishi.....	10	KIA	44
MAZDA	10	SSANGYONG	45
SUZUKI/MARUTI	11	MAHINDRA.....	45
SUBARU	12	ASIAN TRUCKS.....	48
ISUZU.....	12	TATA	51
HINO.....	13	GREATWALL	54
FUSO.....	13	MAXUS/LDV	62
UD.....	14	MG.....	62
AUDI/VW/SEAT/SKODA.....	14	BYD.....	63
FORD EU	16	ETC	76
RENAULT/DACIA/SAMSUNG.....	16		
BMW/MINI	16		
LAND ROVER	17		
JAGUAR.....	23		
MERCEDES BENZ.....	26		
FIAT/ALFA ROMEO/LANCIA	27		
PEUGEOT/CITROEN	28		
VOLVO	33		
FORD USA/Lincoln.....	35		
CHRYSLER/JEEP/DODGE.....	40		

For more information, please email Sales@OEMtools.com, or call 877-263-4897

TOYOTA/LEXUS

New model added

86 (ZN6)

- Engine
- ECT
- Cruise Control
- ABS/VSC/TRC
- EMPS
- Air Conditioner
- Theft Deterrent
- SRS Airbag
- Main Body
- Master Switch
- Combination Meter
- Entry&Start
- Power Source Control
- Remote Engine Starter

AYGO (AB70)

- Engine
- Transmission
- Stop and Start
- Radar Cruise1
- Radar Cruise2
- Brake
- EMPS
- Front Recognition Camera
- Lane Control
- Steering Angle Sensor
- Air Conditioner
- Immobiliser
- SRS Airbag
- Pre-Collision System
- Main Body
- Central Gateway
- Combination Meter
- Road Sign Assist
- Clearance Warning
- Rain and/or Humidity Sensor
- Front Recognition Camera (Front Lighting Control)
- Entry&Start
- Power Source Control
- Navigation System
- Front Radar Sensor
- Power Integration No.1
- Power Distribution Box
- Telematics

IZOA EV (AX10)

- EV
- Motor Generator

- EV Battery
- Plug-in Control
- DC Quick Charging Control
- Radar Cruise1
- Radar Cruise2
- ABS/VSC/TRAC(TRAC)
- Tire Pressure Monitor
- EMPS
- Electric Parking Brake
- Front Recognition Camera
- Lane Control
- Air Conditioner
- SRS Airbag
- Pre-Collision System
- Main Body
- Central Gateway
- D-Door Motor
- P-Door Motor
- RL-Door Motor
- RR-Door Motor
- Master Switch
- Sliding Roof
- Combination Meter
- AFS
- HL AutoLeveling
- Front Recognition Camera (Front Lighting Control)
- Entry&Start
- Power Source Control
- Front Radar Sensor
- Blind Spot Monitor Master
- Blind Spot Monitor Slave
- Grille Shutter
- Acoustic Vehicle Alerting System
- Telematics

HS (ANF10)

- Engine
- Hybrid Control
- Cruise Control
- Radar Cruise
- ABS/VSC/TRAC(TRAC)
- Tire Pressure Monitor
- EMPS
- Parking Assist Camera
- Lane Departure Alert
- Transmission Control
- Air Conditioner
- SRS Airbag
- Pre-Collision
- Pre-Collision 2
- Main Body
- PM1 Gateway
- PM2 Gateway
- D-Door Motor
- P-Door Motor



Zenith Distributor Bulletin

2025 Jan. Update Details

January 16, 2025

- RL-Door Motor
- RR-Door Motor
- Driver Seat
- Master Switch
- Sliding Roof
- Tilt&Telescopic
- Combination Meter
- Mirror L
- Mirror R
- IPA/ICS/Clearance Sonar
- AFS
- Entry&Start
- Power Source Control
- Occupant Detection
- Remote Engine Starter
- Navigation System
- Telematics

LS (XF50)

- Engine
- Transmission
- Hybrid Control
- Motor Generator
- HV Battery
- Stop and Start
- Radar Cruise1
- Radar Cruise2
- Air suspension
- Adaptive Variable Suspension System
- Front Stabilizer
- Rear Stabilizer
- Brake/EPB
- ABS/VSC/TRAC(TRAC)
- Brake Booster
- Tire Pressure Monitor
- EMPS
- VGRS
- Electric Parking Brake
- Front Recognition Camera
- Lane Control
- Panoramic View Monitor
- Circumference Monitoring Camera Control Module
- DRS
- Steering Angle Sensor
- Driver Monitor Camera Control
- Parking Assist Camera
- Rear Camera
- Air Conditioner
- SRS Airbag
- Driving Support Computer
- Seat Belt Control
- Pre-Collision System
- Main Body
- Central Gateway
- Rear Left Door

- Rear Right Door
- Back Door
- D-Door Motor
- P-Door Motor
- RL-Door Motor
- RR-Door Motor
- Driver Seat
- Passenger Seat
- Rear Left Seat
- Rear Right Seat
- Master Switch
- Rear Console Switch
- Sliding Roof
- Tilt&Telescopic
- Combination Meter
- Head Up Display
- Road Sign Assist
- Digital Rear-View Mirror
- Clearance Warning
- IPA/ICS/Clearance Sonar
- Rain and/or Humidity Sensor
- Wiper
- AFS
- AFS (Sub)
- HL AutoLeveling
- HL AutoLeveling (Sub)
- Front Recognition Camera (Front Lighting Control)
- Entry&Start
- Power Source Control
- Occupant Detection
- Remote Engine Starter
- Starting Control
- Navigation System
- Front Right Door
- Front Left Door
- Front Radar Sensor
- Front Side Radar Master
- Front Side Radar Slave
- Blind Spot Monitor Master
- Blind Spot Monitor Slave
- Acoustic Vehicle Alerting System
- Active Noise Control
- Pedestrian Protection
- Sub Battery System
- Power Integration No.1
- Power Integration No.2
- Power Integration No.3
- Telematics

New system added

TUNDRA (XK50)

- Trailer Brake Controller
- Basic Function
- DTC Analysis
- Data Analysis

For more information, please email Sales@OEMtools.com, or call 877-263-4897

Actuation Test

GX (J150)

- Rear Camera
- Basic Function
- DTC Analysis
- Data Analysis

[Back to Index](#)

NISSAN/INFINITI

New type added

ENGINE

- Basic Function
- DTC Analysis
- Data Analysis
- ECU Information Display

AIRBAG

- Basic Function
- DTC Analysis
- Data Analysis
- ECU Information Display

EPS

- Basic Function
- DTC Analysis
- Data Analysis
- ECU Information Display

MULTI AV

- Basic Function
- DTC Analysis
- Data Analysis
- ECU Information Display

ICC/ADAS AV

- Basic Function
- DTC Analysis
- Data Analysis
- Actuation Test
- ECU Information Display
- Special Function
- Steering Torque Calibration

Side Radar (Rear Left)

- Basic Function
- DTC Analysis
- Data Analysis
- ECU Information Display

Side Radar (Rear Right)

- Basic Function
- DTC Analysis
- Data Analysis
- ECU Information Display

HVAC

- Basic Function
- DTC Analysis
- Data Analysis
- Actuation Test
- ECU Information Display
- Special Function
- TEMP Set Correct
- REC Memory Set
- FRE Memory Set
- Blow Set
- Target Evaporator Temp Upper Limit Setting

METER

- Basic Function
- DTC Analysis
- ECU Information Display

IPDM

- Basic Function
- Actuation Test

Function improvement and bug fixes

- SONAR Special Function bug fixes
- SONAR DTC Analysis bug fixes

[Back to Index](#)

HONDA/ACURA

New function added

Passport 2023, etc : USA

- AT
- Special Function
- Teach In

TLX 2017, etc : USA

- Blind Spot Information
- Special Function
- Left BSI Radar Operation Check
- Right BSI Radar Operation Check

New type added

Civic 2018 : Emirate

- BCM_Lighting
- Basic Function



Zenith Distributor Bulletin

2025 Jan. Update Details

January 16, 2025

DTC Analysis
Data Analysis
Actuation Test

Civic 2016 : USA

BCM_POWER WINDOW

- Basic Function
DTC analysis
Data analysis
Actuation Test
- Special Function
Power Window Reset for Driver side
Power Window Reset for Passenger side
Power Window Reset for Left Rear
Power Window Reset for Right Rear

Odyssey 2023 : USA

Blind Spot Information

- Basic Function
DTC Analysis
Data Analysis
Actuation Test

Passport 2023 : USA

BCM_Lighting

- Basic Function
DTC Analysis
Data Analysis
Actuation Test

BCM_Doorlocks

- Basic Function
DTC Analysis
Data Analysis
Actuation Test

BCM_Keyless

- Basic Function
DTC Analysis
Data Analysis
Actuation Test
- Special Function
Keyless Check

BCM_Security

- Basic Function
DTC Analysis
Data Analysis
Actuation Test
- Special Function
History Data Clear
History Data

BCM_Wiper

- Basic Function

DTC Analysis
Data Analysis
Actuation Test

BCM_HVAC

- Basic Function
DTC Analysis
- Special Function
HVAC Control Unit Self Test

BCM_POWER WINDOW

- Basic Function
DTC analysis
Data analysis
Actuation Test
- Special Function
Power Window Reset for Driver side
Power Window Reset for Passenger side
Power Window Reset for Left Rear
Power Window Reset for Right Rear

BCM_POWER Tailgate

- Basic Function
DTC analysis
Data analysis
Actuation Test

BCM_POWER Seat/Mirror

- Basic Function
DTC analysis
Data analysis
Actuation Test

BCM_Seat Heater

- Basic Function
DTC analysis
Data analysis

BCM_Parking Sensor

- Basic Function
DTC analysis
Data analysis
- Special Function
Initialization

Wireless Charger

- Basic Function
DTC Analysis

Blind Spot Information

- Basic Function
DTC Analysis
Data Analysis
Actuation Test
- Special Function

For more information, please email Sales@OEMtools.com, or call 877-263-4897



Zenith Distributor Bulletin

2025 Jan. Update Details

January 16, 2025

Left BSI Radar Operation Check
Right BSI Radar Operation Check

One Push Start_Keyless Access Control System

- Basic Function
- DTC Analysis
- Data Analysis
- ECU Information Display
- Special Function
- Self Check
- Number of KEYLESS ACCESS Remotes
- History Data
- System Check 1
- System Check 2
- Antenna level 1
- Antenna level 2
- Key Position
- Battery Voltage
- Function Test

Clarity Hybrid 2018 : USA

BCM_Lighting
- Basic Function
DTC Analysis
Data Analysis
Actuation Test

BCM_Doorlocks
- Basic Function
DTC Analysis
Data Analysis
Actuation Test

BCM_Keyless
- Basic Function
DTC Analysis
Data Analysis
Actuation Test
- Special Function
Keyless Check

BCM_Security
- Basic Function
DTC Analysis
Data Analysis
Actuation Test
- Special Function
History Data Clear
History Data

BCM_Wiper
- Basic Function
DTC Analysis
Data Analysis
Actuation Test

BCM_HVAC
- Basic Function
DTC Analysis
- Special Function
HVAC Control Unit Self Test

BCM_POWER WINDOW
- Basic Function
DTC analysis
Data analysis
Actuation Test
- Special Function
Power Window Reset for Driver side
Power Window Reset for Passenger side
Power Window Reset for Left Rear
Power Window Reset for Right Rear

BCM_Seat Heater
- Basic Function
DTC analysis
Data analysis

BCM_Telematics
- Basic Function
DTC analysis
Data analysis

MDX 2022: USA

BCM_Lighting
- Basic Function
DTC Analysis
Data Analysis
Actuation Test

Semiconductor Fuse
- Basic Function
DTC Analysis

Wireless Charger
- Basic Function
DTC Analysis

Blind Spot Information
- Basic Function
DTC Analysis
Data Analysis
Actuation Test

Civic 2023 : USA

BCM_Lighting
- Basic Function
DTC Analysis
Data Analysis
Actuation Test

For more information, please email Sales@OEMtools.com, or call 877-263-4897



Zenith Distributor Bulletin

2025 Jan. Update Details

January 16, 2025

BCM_Doorlocks - Basic Function DTC Analysis Data Analysis Actuation Test	Data Analysis Actuation Test
BCM_Keyless - Basic Function DTC Analysis Data Analysis Actuation Test - Special Function Keyless Check	BCM_Doorlocks - Basic Function DTC Analysis Data Analysis Actuation Test
BCM_Security - Basic Function DTC Analysis Data Analysis Actuation Test - Special Function History Data Clear History Data	BCM_Keyless - Basic Function DTC Analysis Data Analysis Actuation Test - Special Function Keyless Check
BCM_Wiper - Basic Function DTC Analysis Data Analysis Actuation Test	BCM_Security - Basic Function DTC Analysis Data Analysis Actuation Test - Special Function History Data Clear History Data
BCM_HVAC - Basic Function DTC Analysis - Special Function HVAC Control Unit Self Test	BCM_Wiper - Basic Function DTC Analysis Data Analysis Actuation Test
BCM_POWER WINDOW - Basic Function DTC analysis Data analysis Actuation Test - Special Function Power Window Reset for Driver side Power Window Reset for Passenger side Power Window Reset for Left Rear Power Window Reset for Right Rear	BCM_HVAC - Basic Function DTC Analysis - Special Function HVAC Control Unit Self Test
Semiconductor Fuse - Basic Function DTC Analysis	BCM_POWER WINDOW - Basic Function DTC analysis Data analysis Actuation Test - Special Function Power Window Reset for Driver side Power Window Reset for Passenger side Power Window Reset for Left Rear Power Window Reset for Right Rear
Accord Hybrid 2022 : USA BCM_Lighting - Basic Function DTC Analysis	Semiconductor Fuse - Basic Function DTC Analysis
	Wireless Charger - Basic Function

For more information, please email Sales@OEMtools.com, or call 877-263-4897



Zenith Distributor Bulletin

2025 Jan. Update Details

January 16, 2025

DTC Analysis

One Push Start_Keyless Access Control System

- Basic Function
- DTC Analysis
- Data Analysis
- ECU Information Display
- Special Function
- Self Check
- Number of KEYLESS ACCESS Remotes
- History Data
- System Check 1
- System Check 2
- System Type
- Antenna level 1
- Antenna level 2
- Key Position
- Battery Voltage
- Function Test

Ridgeline 2023 : USA

- BCM_Lighting
- Basic Function
- DTC Analysis
- Data Analysis
- Actuation Test

BCM_Doorlocks

- Basic Function
- DTC Analysis
- Data Analysis
- Actuation Test

BCM_Keyless

- Basic Function
- DTC Analysis
- Data Analysis
- Actuation Test
- Special Function
- Keyless Check

BCM_Security

- Basic Function
- DTC Analysis
- Data Analysis
- Actuation Test
- Special Function
- History Data Clear
- History Data

BCM_Wiper

- Basic Function
- DTC Analysis
- Data Analysis
- Actuation Test

BCM_HVAC

- Basic Function
- DTC Analysis
- Special Function
- HVAC Control Unit Self Test

BCM_Parking Sensor

- Basic Function
- DTC analysis
- Data analysis
- Special Function
- Initialization

BCM_POWER Seat/Mirror

- Basic Function
- DTC analysis
- Data analysis
- Actuation Test

Blind Spot Information

- Basic Function
- DTC Analysis
- Data Analysis
- Actuation Test
- Special Function
- Left BSI Radar Operation Check
- Right BSI Radar Operation Check

One Push Start_Keyless Access Control System

- Basic Function
- DTC Analysis
- Data Analysis
- ECU Information Display
- Special Function
- Self Check
- Number of KEYLESS ACCESS Remotes
- History Data
- System Check 1
- System Check 2
- System Type
- Antenna level 1
- Antenna level 2
- Key Position
- Battery Voltage
- Function Test

TLX 2017 : USA

- BCM_Lighting
- Basic Function
- DTC Analysis
- Data Analysis
- Actuation Test
- BCM_Doorlocks

For more information, please email Sales@OEMtools.com, or call 877-263-4897



Zenith Distributor Bulletin

2025 Jan. Update Details

January 16, 2025

- Basic Function
DTC Analysis
Data Analysis
Actuation Test

BCM_Keyless

- Basic Function
DTC Analysis
Data Analysis
Actuation Test
- Special Function
Keyless Check

BCM_Security

- Basic Function
DTC Analysis
Data Analysis
Actuation Test
- Special Function
History Data Clear
History Data

BCM_Wiper

- Basic Function
DTC Analysis
Data Analysis
Actuation Test

BCM_HVAC

- Basic Function
DTC Analysis
- Special Function
HVAC Control Unit Self Test

BCM_POWER Seat/Mirror

- Basic Function
DTC analysis
Data analysis
Actuation Test

BCM_Seat Heater

- Basic Function
DTC analysis
Data analysis

BCM_Telematics

- Basic Function
DTC analysis
Data analysis

Blind Spot Information

- Basic Function
DTC Analysis
Data Analysis
Actuation Test

- Special Function

Left BSI Radar Operation Check
Right BSI Radar Operation Check

Integrated Driver Support System/Monocular Camera
Driver Support System

- Basic Function
Data analysis

One Push Start_Keyless Access Control System

- Basic Function
DTC Analysis
Data Analysis
ECU Information Display
- Special Function
Self Check
Number of KEYLESS ACCESS Remotes
History Data
System Check 1
System Check 2
Antenna level 1
Antenna level 2
Key Position
Battery Voltage
Function Test

HR-V 2022 : USA

BCM_Lighting
- Basic Function
DTC Analysis
Data Analysis
Actuation Test

BCM_Doorlocks

- Basic Function
DTC Analysis
Data Analysis
Actuation Test

BCM_Keyless

- Basic Function
DTC Analysis
Data Analysis
Actuation Test
- Special Function
Keyless Check

BCM_Security

- Basic Function
DTC Analysis
Data Analysis
Actuation Test
- Special Function
History Data Clear
History Data

For more information, please email Sales@OEMtools.com, or call 877-263-4897

BCM_Wiper

- Basic Function
- DTC Analysis
- Data Analysis
- Actuation Test

BCM_HVAC

- Basic Function
- DTC Analysis
- Special Function
- HVAC Control Unit Self Test

BCM_Seat Heater

- Basic Function
- DTC Analysis
- Data Analysis

Function improvement and bug fixes

Accord, ...etc : USA

ABS/VSA

- Basic Function
- Data Analysis

FIT,...etc : AU

SRS

- Basic Function
- DTC Analysis

Auto VIN Improved

System name modified

- BODY -> BODY/Blind Spot Information/Multi View Camera System

[Back to Index](#)

MITSUBISHI

New model added

TRITON / L200 (LA#, LB#, LC#)

- ENGINE
- TRANSMISSION
- ABS
- EPS / DAST 3
- SS4 / ES4 / REAR DIFF LOCK
- CHASSIS CONTROL
- AIR BAG
- HVAC
- BCM
- IPDM E/R
- METER / M&A
- HANDS FREE MODULE

- Multi Around Monitor

- 8ch CAN GATEWAY

- MULTI AV

- IVC

- ICC / ADAS2

- LASER / RADAR

- Side radar (Rear left)

- Side radar (Rear right)

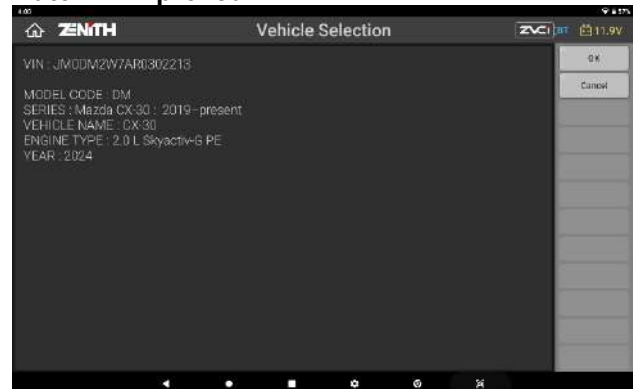
- LANE CAMERA

- SONAR

[Back to Index](#)

MAZDA

AutoVIN improved



System Search Improved

New model added (7th generation-)

- MAZDA3 1.5 L Skyactiv-G P5
- MAZDA3 2.0 L Skyactiv-G PE
- MAZDA3 2.0 L e-Skyactiv-G PE(Hybrid)
- MAZDA3 2.0 L e-Skyactiv-X(M Hybrid)
- MAZDA3 2.5 L Skyactiv-G PY
- MAZDA3 2.5 L Skyactiv-G PY Turbo
- MAZDA3 1.8 L Skyactiv-D S8
- CX-5 2.0 L Skyactiv-G PE
- CX-5 2.5 L Skyactiv-G PY
- CX-5 2.2 L Skyactiv-D SH
- CX-9 2.5 L Skyactiv-G PY
- CX-30 1.5 L Skyactiv-G P5
- CX-30 2.0 L Skyactiv-G PE
- CX-30 2.0 L e-Skyactiv-G PE(Hybrid)
- CX-30 2.0 L e-Skyactiv-X(M Hybrid)
- CX-30 2.5 L Skyactiv-G PY
- CX-30 2.5 L Skyactiv-G PY Turbo
- CX-30 1.8 L Skyactiv-D S8
- CX-50 2.0 L Skyactiv-G PE
- CX-50 2.5 L Skyactiv-G PY

For more information, please email Sales@OEMtools.com, or call 877-263-4897

- CX-50 2.5 L Skyactiv-G PY Turbo
- CX-60 3.3 L e-Skyactiv G(Mild Hybrid)
- CX-60 2.5 L e-Skyactiv PHEV
- CX-60 3.3 L e-Skyactiv D T3 VPTS
- CX-70 3.3 L e-Skyactiv G(Mild Hybrid)
- CX-70 2.5 L e-Skyactiv PHEV
- CX-70 3.3 L e-Skyactiv D T3 VPTH
- CX-80 3.3 L e-Skyactiv G(Mild Hybrid)
- CX-80 2.5 L e-Skyactiv PHEV
- CX-80 3.3 L e-Skyactiv D T3 VPTS
- CX-90 3.3 L e-Skyactiv G(Mild Hybrid)
- CX-90 2.5 L e-Skyactiv PHEV
- CX-90 3.3 L e-Skyactiv D T3 VPTH
- MX-30 e-Skyactiv-G
- MX-30 2.0 L Skyactiv-G PE
- MX-30 2.0 L e-Skyactiv-G(M Hybrid)

New function added

Mazda2 ABS

- Basic Function
- Actuation Test

Mazda2 IC

- Basic Function
- Actuation Test

MX-5 PCM

- Basic Function
- Actuation Test

Mazda3 PCM

- Special Function
- Fuel Injector Correction Factors

Mazda3 PCM

- Special Function
- Fuel Injector Correction Factors

Feedback

Ecuador: BT-50 PCM Data Analysis item added

Australia: AutoVIN bug fixes

[Back to Index](#)

SUZUKI/MARUTI

New type added

EPI(Engine/AT)

- Basic Function
- DTC Analysis
- ECU Information Display

AT/CVT/AGS

- Basic Function
- DTC Analysis
- ECU Information Display
- Special Function
- Gear Shift Count Initialization for Maintenance

ABS

- Basic Function
- DTC Analysis
- ECU Information Display
- Special Function
- Sensor Calibration
- Hydraulic Control Test
- Esp Function Setting

SRS AIRBAG

- Basic Function
- DTC Analysis
- ECU Information Display

EPS

- Basic Function
- DTC Analysis
- ECU Information Display
- Special Function
- Sensor Value Calibration

Idling Stop

- Basic Function
- Actuation Test
- Special Function
- Starter Driving Counter Registration
- Starter Driving Counter Reset

BCM

- Basic Function
- DTC Analysis
- ECU Information Display

METER

- Basic Function
- DTC Analysis
- ECU Information Display

SONAR

- Basic Function
- DTC Analysis
- ECU Information Display

Auxiliary Power

- Basic Function
- DTC Analysis
- ECU Information Display

ISG
 - Basic Function
 DTC Analysis
 ECU Information Display

Central Gateway
 - Basic Function
 DTC Analysis
 ECU Information Display

Front Camera System
 - Basic Function
 DTC Analysis
 ECU Information Display

Blind Spot Monitor System(Main)
 - Basic Function
 DTC Analysis
 ECU Information Display

Blind Spot Monitor System(Sub)
 - Basic Function
 DTC Analysis
 ECU Information Display

Front Radar System
 - Basic Function
 DTC Analysis
 ECU Information Display

[Back to Index](#)

SUBARU

New system ID added
 AHLS(Automatic headlight leveling system)
 - Basic function
 DTC Analysis
 DTC Erase Memory
 Data Analysis
 Actuation Test
 ECU Information Display
 - Special function
 Customize

Reverse automatic braking
 - Basic function
 DTC Analysis
 DTC Erase Memory
 Data Analysis
 ECU Information Display
 - Special function

ECU Initialize

Function improvement and bug fixes

System comm. Stabilized
 System search improved
 DTC item added

[Back to Index](#)

ISUZU

New function added

D-MAX ABS/ESC R4, R5
 - Basic Function
 DTC analysis
 Data analysis
 ECU information
 - Special Function
 Learning for steering central position
 Learning for G sensor central position
 ECU Lock
 EPB Pad Exchange Mode

D-MAX stereo camera
 - Basic Function
 DTC analysis
 Data analysis
 ECU information
 - Special Function
 Camera aiming
 Camera aiming clear
 Restart Camera Aiming
 Camera inspection
 ECU Lock

D-MAX BCM
 - Basic Function
 DTC analysis
 Data analysis
 Actuation Test
 ECU information
 - Special Function
 ECU Lock

D-MAX Meter
 - Basic Function
 ECU information
 - Special Function
 ECU Lock

D-MAX SRS Airbag
 - Basic Function

DTC analysis
 Data analysis
 ECU information

DUTRO (2KG/2PG/2RG/2SG)

VCS (Vehicle Control System) (sub)
 - Basic Function
 ECU Information Display

Driving support
 - Special Function
 Yaw rate sensor 0 point learning
 Adjustment of millimeter-wave radar beam axis
 Initialization of ECU learning value
 System protection data
 Learned Value

Feedback

Australia : F/G Series ABS Special Function bug fixes
 Australia : MU-X Engine Special Function added
 Thailand: D-MAX Engine DTC item added
 Australia : N Series Engine Special Function bug fixes

[Back to Index](#)

HINO

[Back to Index](#)

New model added

HINO 300

- Engine
- Transmission
- Hybrid
- Inverter
- VCS (Vehicle Control System)
- Brake
- FCM (Front image recognition sensor)
- LDWS (Lane departure warning systems)
- SRS (Airbag)
- Immobilizer
- Driving support
- Headlight auto leveling
- Smart System
- Erroneous start suppression function

Blue Ribbon Hybrid Articulated (KX525Z1)

- Engine
- Transmission
- Hybrid
- Inverter
- DCU (Dosing Control Unit)
- Suspension
- Brake
- Meter
- VCS (Vehicle Control System)
- Central gateway
- Vehicle control ECU
- Door control (main)
- Door control (sub)
- Body control module

Dominator 500 / VICTOR 500

- Engine
- SRS (Airbag)

New system added

FUSO

New model added

CANTER ECO Hybrid

- ABS- Antilock brake system control unit
- BCU- Battery Control Unit
- EEC- Engine control unit
- EMCM- Electric motor Control unit
- EZGO- Hill start assist control unit
- HLAL- Control unit 'Automatic headlamp adjustment'
- HVAC- Control and operating unit 'Automatic air conditioning'
- ICUC- Instrument panel
- IMMO- Immobilizer control unit
- ISS- Automatic engine start/stop control unit
- MPC- Multifunction camera
- SRS- Supplemental restraint system control unit
- SSAM- Single signal acquisition and actuation module
- TCM-HEV- DUONIC control unit

AERO ACE (QTG-MS)

- ACM- AdBlue(R) exhaust aftertreatment unit
- CPC- Common powertrain controller
- MCM- Motor Control Module Control unit
- TRANSMISSION
- ABS/EBS
- AMB
- Hill start (EZGO)
- AIR BAG
- MDAS
- Distance Warning
- RADAR

AERO ACE (LKG-MS)

- ACM- AdBlue(R) exhaust aftertreatment unit
- CPC- Common powertrain controller
- MCM- Motor Control Module Control unit

- TRANSMISSION
- Air Suspension
- ABS/EBS
- Hill start (EZGO)
- AIR BAG
- MDAS

[Back to Index](#)

UD

Function improvement and bug fixes

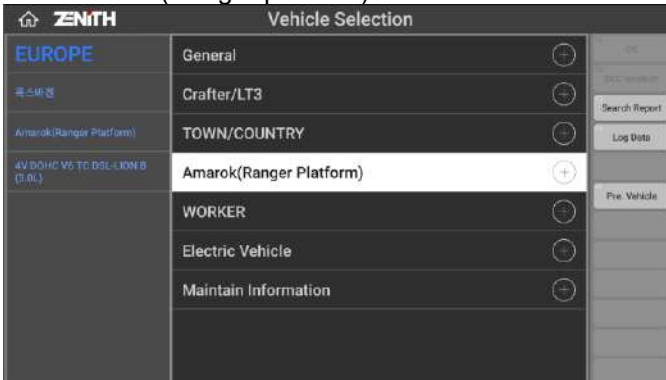
- QUESTER : Thailand
 Engine Control Module
- Basic Function
 - Data Analysis

[Back to Index](#)

AUDI/VW/SEAT/SKODA

New model added

- VW Amarok(Ranger platform) 2023~



Service Function added

- Special Function/Activation
- Auto Stop/Start
- DPF/GPF Reset
- SCR(Addblue)
- Injector Test
- Airbag
- Headlamp
- Wiper
- Cluster/Meter Test
- Suspension
- Throttle
- BMS Monitoring

- Antenna Check
- User Option
- Evap Test/Monitor
- GearBox
- Customize/Coding
- TPMS
- Sunroof
- Door Lock/Unlock
- Rain Sensor
- Idle Control
- Nox
- Clutch
- SOC
- SOH
- Traction Control
- Fuel air remove
- Aircon
- GLOW Test
- Common Rail
- Turbo Charger

Missing ID added (Engine system)

- 59 ea VAG Number (Engine ID)

Coding(Online) Function added (UDS Only)

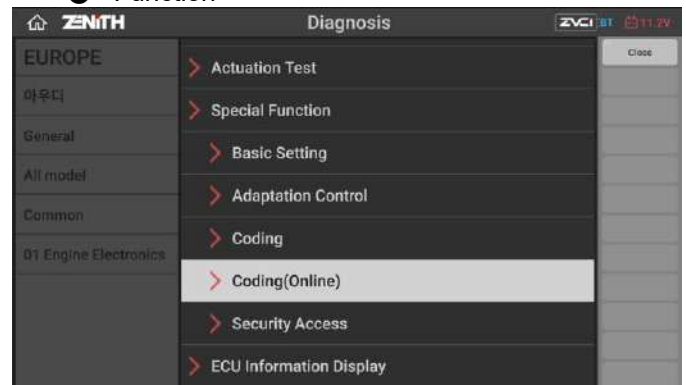
- 01 Engine Electronics
- 02 Transmission Electronics
- 03 Brake Electronics
- 04 Steering Angle
- 05 Access and Start Permission
- 06 Seat Adjustment-Passenger
- 08 Auto HVAC
- 09 Electronic Central Electrics
- 0E Media Player 1
- 10 Park/Steer Assist
- 11 Engine Electronics 2
- 13 Distance Regulation
- 14 Suspension Electronics
- 15 Airbag
- 16 Steering Wheel Electronics
- 17 Instrument Cluster
- 18 Auxiliary Heater
- 19 CAN Gateway
- 1B Active Steering
- 20 High Beam Assist
- 21 Engine Electronics 3
- 22 4WD Electronics
- 23 Brake Booster
- 25 Immobilizer
- 26 Electronic Roof Controls
- 28 Climate Control Unit Rear
- 2B Steering Column Lock
- 30 Special Function 2
- 32 Locking Electronics
- 34 Self Leveling Suspension

For more information, please email Sales@OEMtools.com, or call 877-263-4897

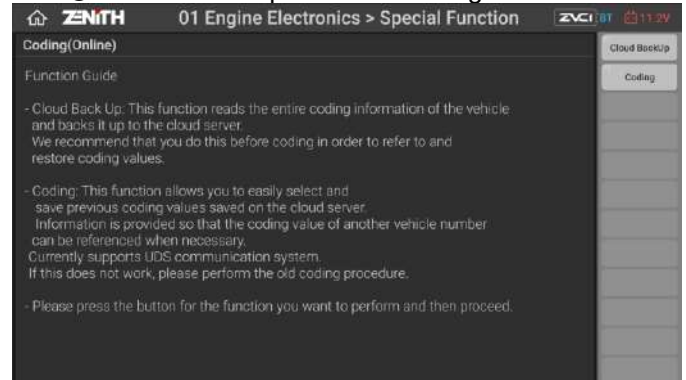
- 36 Seat Adjustment-Driver
- 37 Navigation
- 3B Sensor Electronics
- 3C Lane Change Assistant
- 3D Special Function
- 40 AC Compressor
- 42 Door Electronics-Driver
- 44 Steering Assistance
- 47 Sound System
- 51 Electric Drive
- 52 Door Electronics-Passenger
- 53 Parking Brake
- 55 Headlight Range Control
- 57 TV Tuner
- 5F Information Electronics
- 65 Tire Pressure Monitoring
- 69 Trailer Function
- 6B Seat Adjustment Rear Passenger Side
- 6C Back-up Camera
- 6D Trunk Electronics
- 6F Control Convenience 2
- 71 Battery Charger
- 75 Telematics
- 76 Parking Aid
- 77 Telephone
- 7F Information Control unit-2
- 81 Gear Shift
- 8105 DC/DC Converter 12V (A19)
- 8123 Application server 1
- 8124 Application server 1 system 2
- 8125 Application server 3
- 8128 Light line display 1
- 82 Head Up Display
- 84 Night Vision
- 85 On Board Camera
- 88 Multicont Seat Driver
- 89 Multicont. Seat Pass.
- 8A Multicont Seat Rear DS
- 8B Adaptive Cruise 2
- 8C Battery Energy Control Module
- 8D Multicont Seat Rear PS
- 8E Image Processing
- 8F Pretens Front Left
- 90 Pretens Front Right
- A5 Front sensors Driver Assistance
- AC Reductant Control
- BB Door Electronics Rear Driver side
- BC Door Electronics Rear Passenger side
- BD High Voltage battery charge management
- C0 Actuator for Exterior Noise
- C002 SW Cluster Embedded (SWC2)
- C003 SW Cluster Housekeeping (SWC3)
- C3 Drive Motor 3
- C4 DC/DC Converter
- C5 Therm. Mgt.

- C6 Battery charger control module
- C7 Pedestrian Protec.
- CA Sunroof control module
- CB Rear Axle Steering
- D6 Light control left 2
- D7 Light control right 2
- DB front corner radar 1
- DC front corner radar 2
- DE charging device 1 for mobile end device

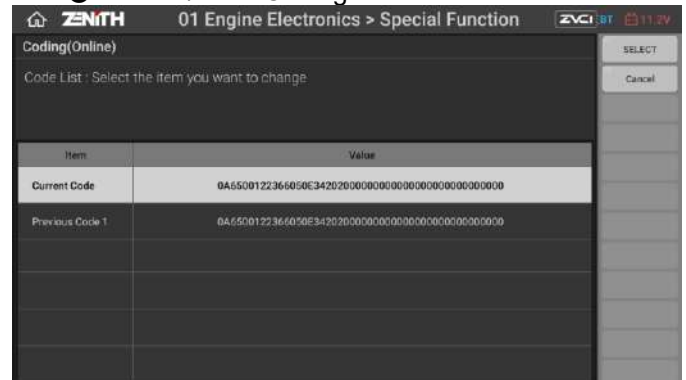
● Function



● Cloud back up – vehicle coding data



● Select/Save Coding



[Back to Index](#)

For more information, please email Sales@OEMtools.com, or call 877-263-4897

FORD EU

New model added

FOCUS 1.5L Dragon I3 DI TC Gas B 2019 ~

- PCM(Powertrain Control Module)
- ABS(Anti-Lock Brake System)
- ACM(Audio Front Control Module)
- APIM(SYNC Module)
- BCM(Body Control Module)
- CCM(Cruise Control Module)
- DDM(Driver Door Module)
- GSM(Gear Shift Module)
- GWM(Gateway Module A)
- HCM(Headlamp Control Module)
- HVAC(Heating Ventilation And Air Conditioning)
- IPC(Instrument Panel Cluster)
- IPM-A(Image Processing Module A)
- PAM(Parking Assist Control Module)
- PDM(Passenger Door Module)
- PSCM(Power Steering Control Module)
- RCM(Restraint Control Module)
- SCCM(Steering Column Control Module)
- SODL(Side Obstacle Detection Control Module LH)
- SODR(Side Obstacle Detection Control Module RH)
- WACM(Wireless Accessory Charging Module)

Ecosport 1.5L DRAGON I3 TIVCT PFI GAS A 2018 ~

- PCM(Powertrain Control Module)
- ABS(Anti-Lock Brake System)
- ACM(Audio Front Control Module)
- APIM(SYNC Module)
- BCM(Body Control Module)
- DDM(Driver Door Module)
- GWM(Gateway Module A)
- HVAC(Heating Ventilation And Air Conditioning)
- IPC(Instrument Panel Control Module)
- PAM(Parking Assist Control Module)
- PDM(Passenger Door Module)
- PSCM(Power Steering Control Module)
- RCM(Restraint Control Module)
- SCCM(Steering Column Control Module)
- TCU(Telematics Control Unit Module)

Topology model added

[Back to Index](#)

RENAULT/DACIA/SAMSUNG

RENAULTSAMSUNG Automatic selection added



Feedback

- KOR : SM6 Front radar special function bug fixes
- KOR : SM7 Idle air volume learning function added
- KOR : SM3 Airbag DTC list improved
- ISR : Megane IV Missing ID added
- KOR : SM5 Idle air volume learning function added
- KOR : QM3 DPF Regeneration function added

[Back to Index](#)

BMW/MINI

New system added

MINI Countryman (F60)

- GWS (Gear selector switch)
- Basic Function
- DTC Analysis
- Data Analysis
- Actuation Test
- ECU Information Display

LMV (Longitudinal torque distribution)

- Basic Function

DTC Analysis
 Data Analysis
 Actuation Test
 ECU Information Display

ASD (Active Sound Design)
 - Basic Function
 DTC Analysis
 Data Analysis
 Actuation Test
 ECU Information Display

FZD (Function center/ roof)
 - Basic Function
 DTC Analysis
 Data Analysis
 Actuation Test
 ECU Information Display

HKFM (Tailgate function module)
 - Basic Function
 DTC Analysis
 Data Analysis
 Actuation Test
 ECU Information Display

[Back to Index](#)

LAND ROVER

New model added

Defender (DoIP) 2024

ABS (ABS Control Module)
 - Basic Function
 DTC Analysis
 ECU Information Display

AAM (Audio Amplifier Module)
 - Basic Function
 DTC Analysis
 ECU Information Display

BCM (Body Control Module)
 - Basic Function
 DTC Analysis
 ECU Information Display

BECM (Battery Energy Control Module)
 - Basic Function
 DTC Analysis
 ECU Information Display

CCM (Adaptive Speed Control Control Module)
 - Basic Function
 DTC Analysis
 ECU Information Display

CHCM (Chassis Control Module)
 - Basic Function
 DTC Analysis
 ECU Information Display

DDM (Driver's Door Module)
 - Basic Function
 DTC Analysis
 ECU Information Display

DRDM (Driver's Rear Door Module)
 - Basic Function
 DTC Analysis
 ECU Information Display

DSM (Driver's Seat Module)
 - Basic Function
 DTC Analysis
 ECU Information Display

DDCM (Driveline Disconnect Control Module)
 - Basic Function
 DTC Analysis
 ECU Information Display

DADC (Driver Assistance Domain Controller)
 - Basic Function
 DTC Analysis
 ECU Information Display

EPICD (Electric Power Inverter Converter Control Module 'D')
 - Basic Function
 DTC Analysis
 ECU Information Display

GSM (Gear Shift Module)
 - Basic Function
 DTC Analysis
 ECU Information Display

GWM (Gateway Module)
 - Basic Function
 DTC Analysis
 ECU Information Display

HUD (Head Up Display)
 - Basic Function
 DTC Analysis
 ECU Information Display



Zenith Distributor Bulletin

2025 Jan. Update Details

January 16, 2025

HVAC (Heating Ventilation and Air Conditioning Control Module) - Basic Function DTC Analysis ECU Information Display	DTC Analysis ECU Information Display
HCM (Headlamp Control Module 'A') - Basic Function DTC Analysis ECU Information Display	PDM (Passenger's Door Module) - Basic Function DTC Analysis ECU Information Display
HCMB (Headlamp Control Module B) - Basic Function DTC Analysis ECU Information Display	PRDM (Passenger's Rear Door Module) - Basic Function DTC Analysis ECU Information Display
IDMA (Interactive Display Module A) - Basic Function DTC Analysis ECU Information Display	PSCM (Power Steering Control Module) - Basic Function DTC Analysis ECU Information Display
IPMA (Image Processing Control Module A) - Basic Function DTC Analysis ECU Information Display	PSM (Passenger Front Seat Module) - Basic Function DTC Analysis ECU Information Display
IGM (Infotainment Gateway Module) - Basic Function DTC Analysis ECU Information Display	PSCMB (Power Steering Control Module B) - Basic Function DTC Analysis ECU Information Display
ICCM (Infotainment Compute Control Module) - Basic Function DTC Analysis ECU Information Display	RCM (Restraints Control Module) - Basic Function DTC Analysis ECU Information Display
IPCB (Instrument Panel Cluster Control Module B) - Basic Function DTC Analysis ECU Information Display	RFA (Remote Function Actuator) - Basic Function DTC Analysis ECU Information Display
NFSM (Near Field Sensing Module) - Basic Function DTC Analysis ECU Information Display	SASM (Steering Angle Sensor Module) - Basic Function DTC Analysis ECU Information Display
OCS (Restraints Occupant Classification System Module) - Basic Function DTC Analysis ECU Information Display	SODL (Side Object Detection - Left) - Basic Function DTC Analysis ECU Information Display
PCM (Powertrain Control Module) - Basic Function	SODR (Side Object Detection - Right) - Basic Function DTC Analysis ECU Information Display
	SGCM (Starter Generator Control Module) - Basic Function

For more information, please email Sales@OEMtools.com, or call 877-263-4897



Zenith Distributor Bulletin

2025 Jan. Update Details

January 16, 2025

DTC Analysis
ECU Information Display

- Basic Function
DTC Analysis
ECU Information Display

TCCM (Transfer Case Control Module)

- Basic Function
DTC Analysis
ECU Information Display

DDM (Driver's Door Module)

- Basic Function
DTC Analysis
ECU Information Display

TCM (Transmission Control Module)

- Basic Function
DTC Analysis
ECU Information Display

DRDM (Driver's Rear Door Module)

- Basic Function
DTC Analysis
ECU Information Display

TPM (Tyre Pressure Monitoring System)

- Basic Function
DTC Analysis
ECU Information Display

DSM (Driver's Seat Module)

- Basic Function
DTC Analysis
ECU Information Display

TCU (Telematic Control Unit Module)

- Basic Function
DTC Analysis
ECU Information Display

GSM (Gear Shift Module)

- Basic Function
DTC Analysis
ECU Information Display

TSCM (Turbocharger / Supercharger Control Module)

- Basic Function
DTC Analysis
ECU Information Display

GWM (Gateway Module)

- Basic Function
DTC Analysis
ECU Information Display

WDCM (Wireless Device Charger Module)

- Basic Function
DTC Analysis
ECU Information Display

HCM (Headlamp Control Module)

- Basic Function
DTC Analysis
ECU Information Display

Range Rover Velar (DoIP) 2018~2020

AAM (Audio Amplifier Module)

- Basic Function
DTC Analysis
ECU Information Display

HCMB (Headlamp Control Module B)

- Basic Function
DTC Analysis
ECU Information Display

ABS (ABS Control Module)

- Basic Function
DTC Analysis
ECU Information Display

HVAC (Heating Ventilation and Air Conditioning Control Module)

- Basic Function
DTC Analysis
ECU Information Display

BCM (Body Control Module)

- Basic Function
DTC Analysis
ECU Information Display

ICDM (Interactive Control Display Module)

- Basic Function
DTC Analysis
ECU Information Display

CCM (Adaptive Speed Control Control Module)

- Basic Function
DTC Analysis
ECU Information Display

IDMA (Interactive Display Module A)

- Basic Function
DTC Analysis
ECU Information Display

CHCM (Chassis Control Module)

For more information, please email Sales@OEMtools.com, or call 877-263-4897



Zenith Distributor Bulletin

2025 Jan. Update Details

January 16, 2025

IMC (Incontrol Touch Pro infotainment Master Controller)

- Basic Function
- DTC Analysis
- ECU Information Display

IPC (Instrument Cluster Control Module)

- Basic Function
- DTC Analysis
- ECU Information Display

IPMA (Image Processing Control Module A)

- Basic Function
- DTC Analysis
- ECU Information Display

IPMB (Image Processing Module B)

- Basic Function
- DTC Analysis
- ECU Information Display

OCS (Restraints Occupancy System)

- Basic Function
- DTC Analysis
- ECU Information Display

PAM (Parking Assist Control Module)

- Basic Function
- DTC Analysis
- ECU Information Display

PCM (Powertrain Control Module)

- Basic Function
- DTC Analysis
- ECU Information Display

PDM (Passenger's Door Module)

- Basic Function
- DTC Analysis
- ECU Information Display

PRDM (Passenger's Rear Door Module)

- Basic Function
- DTC Analysis
- ECU Information Display

PSCM (Power Steering Control Module)

- Basic Function
- DTC Analysis
- ECU Information Display

PSM (Passenger's Seat Module)

- Basic Function
- DTC Analysis
- ECU Information Display

RCM (Restraints Control Module)

- Basic Function
- DTC Analysis
- ECU Information Display

RFA (Remote Function Actuator)

- Basic Function
- DTC Analysis
- ECU Information Display

RGTM (Rear Gate/Trunk Module)

- Basic Function
- DTC Analysis
- ECU Information Display

RHVAC (Rear Heating Ventilation and Air Conditioning Control Module)

- Basic Function
- DTC Analysis
- ECU Information Display

SASM (Steering Angle Sensor Module)

- Basic Function
- DTC Analysis
- ECU Information Display

SODL (Side Object Detection - Left)

- Basic Function
- DTC Analysis
- ECU Information Display

SODR (Side Object Detection - Right)

- Basic Function
- DTC Analysis
- ECU Information Display

TCCM (Transfer Case Control Module)

- Basic Function
- DTC Analysis
- ECU Information Display

TCM (Transmission Control Module)

- Basic Function
- DTC Analysis
- ECU Information Display

TCU (Telematic Control Unit Module)

- Basic Function
- DTC Analysis
- ECU Information Display

TPM (Tyre Pressure Monitoring System)

- Basic Function
- DTC Analysis
- ECU Information Display

For more information, please email Sales@OEMtools.com, or call 877-263-4897



Zenith Distributor Bulletin

2025 Jan. Update Details

January 16, 2025

VIM (Steering Column Control Module) - Basic Function DTC Analysis ECU Information Display	ECU Information Display
Range Rover Velar (DoIP) 2021~ AAM (Audio Amplifier Module) - Basic Function DTC Analysis ECU Information Display	EPICD (Electric Power Inverter Converter Control Module 'D') - Basic Function DTC Analysis ECU Information Display
ABS (ABS Control Module) - Basic Function DTC Analysis ECU Information Display	GSM (Gear Shift Module) - Basic Function DTC Analysis ECU Information Display
BCM (Body Control Module) - Basic Function DTC Analysis ECU Information Display	GWM (Gateway Module) - Basic Function DTC Analysis ECU Information Display
BECM (Battery Energy Control Module) - Basic Function DTC Analysis ECU Information Display	HCM (Headlamp Control Module 'A') - Basic Function DTC Analysis ECU Information Display
CCM (Adaptive Speed Control Control Module) - Basic Function DTC Analysis ECU Information Display	HCMB (Headlamp Control Module B) - Basic Function DTC Analysis ECU Information Display
CHCM (Chassis Control Module) - Basic Function DTC Analysis ECU Information Display	HUD (Head Up Display) - Basic Function DTC Analysis ECU Information Display
DADC (Driver Assistance Domain Controller) - Basic Function DTC Analysis ECU Information Display	HVAC (Heating Ventilation and Air Conditioning Control Module) - Basic Function DTC Analysis ECU Information Display
DDM (Driver's Door Module) - Basic Function DTC Analysis ECU Information Display	ICCM (Infotainment Compute Control Module) - Basic Function DTC Analysis ECU Information Display
DRDM (Driver's Rear Door Module) - Basic Function DTC Analysis ECU Information Display	ICDM (Interactive Control Display Module) - Basic Function DTC Analysis ECU Information Display
DSM (Driver's Seat Module) - Basic Function DTC Analysis	IDMA (Interactive Display Module A) - Basic Function DTC Analysis ECU Information Display
	IGM (Infotainment Gateway Module)

For more information, please email Sales@OEMtools.com, or call 877-263-4897



Zenith Distributor Bulletin

2025 Jan. Update Details

January 16, 2025

- Basic Function
DTC Analysis
ECU Information Display

IPC (Instrument Cluster Control Module)

- Basic Function
DTC Analysis
ECU Information Display

IPCB (Instrument Panel Cluster Control Module B)

- Basic Function
DTC Analysis
ECU Information Display

IPMA (Image Processing Control Module A)

- Basic Function
DTC Analysis
ECU Information Display

NFSM (Near Field Sensing Module)

- Basic Function
DTC Analysis
ECU Information Display

NFSMB (Near Field Sensing Module B)

- Basic Function
DTC Analysis
ECU Information Display

PCM (Powertrain Control Module)

- Basic Function
DTC Analysis
ECU Information Display

PDM (Passenger's Door Module)

- Basic Function
DTC Analysis
ECU Information Display

PRDM (Passenger's Rear Door Module)

- Basic Function
DTC Analysis
ECU Information Display

PSCM (Power Steering Control Module)

- Basic Function
DTC Analysis
ECU Information Display

PSCMB (Power Steering Control Module B)

- Basic Function
DTC Analysis
ECU Information Display

RCM (Restraints Control Module)

- Basic Function
DTC Analysis
ECU Information Display

RFA (Remote Function Actuator)

- Basic Function
DTC Analysis
ECU Information Display

RGTM (Rear Gate/Trunk Module)

- Basic Function
DTC Analysis
ECU Information Display

RHVAC (Rear Heating Ventilation and Air Conditioning Control Module)

- Basic Function
DTC Analysis
ECU Information Display

SASM (Steering Angle Sensor Module)

- Basic Function
DTC Analysis
ECU Information Display

SGCM (Starter Generator Control Module)

- Basic Function
DTC Analysis
ECU Information Display

SODL (Side Object Detection - Left)

- Basic Function
DTC Analysis
ECU Information Display

SODR (Side Object Detection - Right)

- Basic Function
DTC Analysis
ECU Information Display

TCCM (Transfer Case Control Module)

- Basic Function
DTC Analysis
ECU Information Display

TCM (Transmission Control Module)

- Basic Function
DTC Analysis
ECU Information Display

TCU (Telematic Control Unit Module)

- Basic Function
DTC Analysis
ECU Information Display

For more information, please email Sales@OEMtools.com, or call 877-263-4897

TPM (Tyre Pressure Monitoring System)

- Basic Function
- DTC Analysis
- ECU Information Display

TSCM (Turbocharger / Supercharger Control Module)

- Basic Function
- DTC Analysis
- ECU Information Display

VIM (Steering Column Control Module)

- Basic Function
- DTC Analysis
- ECU Information Display

New type and function added

Range Rover Sport (DoIP) 2017~ : KOR

PCM (Powertrain Control Module)

- Special function
- Service Message Reset

Range Rover Sport (DoIP) 2017~ : AUS

ABS (ABS Control Module)

- Special Function
- Parking Brake Pad Replacement - Exit Maintenance Mode

Topology added

Applicable model

- Defender (DoIP) 2024
- Discovery (DoIP) 2017~
- Discovery sport 2017
- Discovery sport 2018
- Discovery sport (DoIP) 2020~
- Range Rover Evoque (DoIP) 2019~
- Range Rover Sport (DoIP) 2017~
- Range Rover Velar (DoIP) 2018~2020
- Range Rover Velar (DoIP) 2021~

Auto Selection enhanced

DoIP System search enhanced

Feedback

KOR : Range Rover Sport (DoIP) 2017~ PCM Special Function bug fixes

KOR : Range Rover Sport (DoIP) 2017~ PCM ID added

AUS : Range Rover Sport (DoIP) 2017~ ABS Special Function added

KOR : Discovery Sport 2018 PCM DTC added

[Back to Index](#)

JAGUAR

New model added

I-Pace (DoIP) 2020

AAM (Audio Amplifier Module)

- Basic Function
- DTC Analysis
- Data Analysis
- ECU Information Display

ABS (ABS Control Module)

- Basic Function
- DTC Analysis
- Data Analysis
- ECU Information Display
- Special Function
- Apply Electric Parking Brake
- Calibrate Electric Parking Brake
- Clear Electric Parking Brake End of Line Mode
- Release Electric Parking Brake
- Rear Brake Pad Replacement - Exit Maintenance Mode
- Rear Brake Pad Replacement - Release to Service Position
- Set Assembly Mode State
- Test Air Volume Consumption and Fluid Leakage

ATCM (All Terrain Control Module)

- Basic Function
- DTC Analysis
- ECU Information Display

BBM (Brake Booster Module)

- Basic Function
- DTC Analysis
- Data Analysis
- ECU Information Display

BCCM (Battery Charger Control Module)

- Basic Function
- DTC Analysis
- Data Analysis
- ECU Information Display
- Special Function
- On Demand Self-Test

BCM (Body Control Module)

- Basic Function
- DTC Analysis
- Data Analysis
- ECU Information Display
- Special Function



Zenith Distributor Bulletin

2025 Jan. Update Details

January 16, 2025

Fuel Pump Enable/Disable
Steering Column Calibration
Rain/Light Sensor Calibration

BEEM (Battery Energy Control Module)

- Basic Function
DTC Analysis
Data Analysis
ECU Information Display
- Special Function
HV Battery Pack Individual Modules – Information
Overview - 40D2
HV Battery State of Health Overview
ISO Resistance - X590
Read HV Battery Pack Information
Read HV Battery Pack Serial Number

CCM (Adaptive Speed Control Control Module)

- Basic Function
DTC Analysis
Data Analysis
ECU Information Display
- Special Function
On Demand Self Test

CHCM (Chassis Control Module)

- Basic Function
DTC Analysis
Data Analysis
ECU Information Display
- Special Function
Suspension Deflation
Suspension Inflate
Suspension Geometry Setup

DDM (Driver's Door Module)

- Basic Function
DTC Analysis
Data Analysis
ECU Information Display
- Special Function
Driver Front Door Glass Calibration

DRDM (Driver's Rear Door Module)

- Basic Function
DTC Analysis
Data Analysis
ECU Information Display
- Special Function
Driver Rear Door Glass Calibration

DSM (Driver's Seat Module)

- Basic Function
DTC Analysis
Data Analysis

ECU Information Display

EPICB (Electric Power Inverter Converter Control Module 'B')

- Basic Function
DTC Analysis
Data Analysis
ECU Information Display

EPICC (Electric Power Inverter Converter Control Module)

- Basic Function
DTC Analysis
Data Analysis
ECU Information Display

EPICD (Electric Power Inverter Converter Control Module 'D')

- Basic Function
DTC Analysis
Data Analysis
ECU Information Display

GSM (Gear Shift Module)

- Basic Function
DTC Analysis
Data Analysis
ECU Information Display

GWM (Gateway Module)

- Basic Function
DTC Analysis
Data Analysis
ECU Information Display
- Special Function
Battery Replacement

HCM (Headlamp Control Module 'A')

- Basic Function
DTC Analysis
Data Analysis
ECU Information Display
- Special Function
Headlamp Calibration

HCMB (Headlamp Control Module B)

- Basic Function
DTC Analysis
Data Analysis
ECU Information Display

HUD (Head Up Display)

- Basic Function
DTC Analysis
Data Analysis

For more information, please email Sales@OEMtools.com, or call 877-263-4897



Zenith Distributor Bulletin

2025 Jan. Update Details

January 16, 2025

ECU Information Display	DTC Analysis
HVAC (Heating Ventilation and Air Conditioning Control Module)	Data Analysis
- Basic Function	ECU Information Display
DTC Analysis	- Special Function
Data Analysis	Service Message Reset
ECU Information Display	DC to DC Converter Mode
IDMA (Interactive Display Module A)	PDM (Passenger's Door Module)
- Basic Function	- Basic Function
DTC Analysis	DTC Analysis
Data Analysis	Data Analysis
ECU Information Display	ECU Information Display
IMC (Infotainment Master Controller)	PRDM (Passenger's Rear Door Module)
- Basic Function	- Basic Function
DTC Analysis	DTC Analysis
Data Analysis	Data Analysis
ECU Information Display	ECU Information Display
IPC (Instrument Panel Cluster Control Module)	PSCM (Power Steering Control Module)
- Basic Function	- Basic Function
DTC Analysis	DTC Analysis
Data Analysis	Data Analysis
ECU Information Display	ECU Information Display
IPMA (Image Processing Control Module A)	PSM (Passenger Front Seat Module)
- Basic Function	- Basic Function
DTC Analysis	DTC Analysis
Data Analysis	Data Analysis
ECU Information Display	ECU Information Display
- Special Function	RCM (Restraints Control Module)
Camera Calibration	- Basic Function
IPMB (Image Processing Control Module B)	DTC Analysis
- Basic Function	Data Analysis
DTC Analysis	ECU Information Display
ECU Information Display	RFA (Remote Function Actuator)
OMM (Occupant Monitoring Module)	- Basic Function
- Basic Function	DTC Analysis
DTC Analysis	Data Analysis
Data Analysis	ECU Information Display
ECU Information Display	RGTM (Rear Gate/Trunk Module)
PAM (Parking Assist Control Module)	- Basic Function
- Basic Function	DTC Analysis
DTC Analysis	Data Analysis
Data Analysis	ECU Information Display
ECU Information Display	RHVAC (Rear HVAC Control Module)
PCM (Powertrain Control Module)	- Basic Function
- Basic Function	DTC Analysis
	ECU Information Display
	SASM (Steering Angle Sensor Module)

For more information, please email Sales@OEMtools.com, or call 877-263-4897

- Basic Function
- DTC Analysis
- Data Analysis
- ECU Information Display

SODL (Side Object Detection - Left)

- Basic Function
- DTC Analysis
- Data Analysis
- ECU Information Display

SODR (Side Object Detection - Right)

- Basic Function
- DTC Analysis
- Data Analysis
- ECU Information Display

TCU (Telematic Control Unit Module)

- Basic Function
- DTC Analysis
- Data Analysis
- ECU Information Display

VIM (Steering Column Control Module)

- Basic Function
- DTC Analysis
- Data Analysis
- ECU Information Display

Topology added

Applicable model

- E-Pace 2018~2019
- I-PACE (DoIP) 2020

DoIP System search enhanced

[Back to Index](#)

MERCEDES BENZ

System search Improved

New system added

A-Class 177 IC

- Basic Function
- DTC analysis
- Data analysis
- Actuation Test
- ECU information
- Special Function
- Control unit reset
- Confirmation of general maintenance

Reset general maintenance

A-Class 177 Transmission

- Basic Function
- DTC analysis
- ECU information

V-Class 447 NBR-LR/IRS-HLA

- Basic Function
- DTC analysis
- ECU information

V-Class 447 PTCU

- Basic Function
- DTC analysis
- ECU information

AMG GT 290 DTR

- Basic Function
- DTC analysis
- ECU information

V-Class 447 BMS

- Basic Function
- DTC analysis
- ECU information

A-Class 177 ZAN

- Basic Function
- DTC analysis
- ECU information
- Special Function
- Control unit reset

A-Class 177 AUDIO/COMAND

- Basic Function
- DTC analysis
- ECU information
- Special Function
- Control unit reset

V-Class 447 Airbag

- Basic Function
- DTC analysis
- Data analysis
- ECU information

GLE-Class 167 Starter-alternator

- Basic Function
- DTC analysis
- ECU information

A-Class 177 SOUND

- Basic Function
- DTC analysis

ECU information

- A-Class 177 TPAD
- Basic Function
 - DTC analysis
 - ECU information
 - Special Function
 - Control unit reset

New function added

- A-Class 177 VGS
- Basic Function
 - Data analysis
 - Actuation Test

- A-Class 177 CPC
- Special Function
 - Bleeding the cooling system of the low-temperature circuit

- E-Class 213 CPC
- Special Function
 - Filling the coolant circuit

- C-Class 205 CDI
- Special Function
 - Regeneration of diesel particulate filter
 - Regeneration of diesel particulate filter when driving
 - Determination of fill level of diesel particulate filter
 - Replace component Diesel particulate filter
 - Reprogram diesel particulate filter in control unit N3/9 (CDI control unit)

- A-Class 176 Headlamp
- Special Function
 - Variant Coding (Customize)

- X-Class 470 IC
- Special Function
 - Confirmation of general maintenance

- V-Class 447 Engine
- Basic Function
 - Data Analysis
 - Actuation Test
 - Special Function
 - Display of SCN
 - Display of CVN
 - Display of model check number
 - Regeneration of diesel particulate filter
 - Regeneration of diesel particulate filter when driving
 - Injector injection quantity adjustment

- C-Class 206 Engine
- Basic Function

- Data Analysis
- Actuation Test

- C-Class 206 Engine
- Basic Function
 - Data Analysis

Feedback

- Russia: CLA-118 VGS Basic Function added
- Russia: CLA-118 DCM-FL Missing ID added
- UAE: Sprinter 906 ESP Special Function bug fixes
- Korea: E-213 Service Function bug fixes
- Korea: S-221 ASSYST Special Function bug fixes
- Korea: E-213 CPC Special Function added
- Korea: E-213 Engine DTC item added
- Korea: C-205 Engine bug fixes
- UAE: Sprinter 906 Engine Actuation bug fixes
- Australia: Sprinter 907 Engine Special Function bug fixes
- Australia: A-176 Headlamp SCN ID added
- Australia: Sprinter 907 Engine DTC item added
- Korea: E-213 ABS/ESP Security added
- Australia: A-177 IC New System added
- Australia: EQB-243 BMS Missing ID added
- Australia: Sprinter 904 SSG Special Function added
- Australia: X-470 IC Special Function bug fixes
- Australia: V-447 AB New System added
- Australia: A-176 Headlamp Special Function added
- Australia: GLA-156 PTS DTC item added

[Back to Index](#)

FIAT/ALFA ROMEO/LANCIA

Auto Selection enhanced

All model system function enhanced

- Engine
- Entertainment
- EPS(Electronic power steering)
- HALF(Haptical lane feedback)
- ICS(Integrated control system)
- Immobilizer
- Instrument
- IPC(Instrument panel cluster)
- LBSS(Left blind spot sensor)
- ORC(Occupant restraint control)
- Parking control
- Power steering
- RADIO
- RBSS(Right blind spot sensor)
- RCM(Roof control module)

- RMN(Radio map navigation)
- SCR(M(Selective Catalytic Reduction Module)
- TPM(Tire pressure module)
- BCM
- DMM(Door management module)
- Electronic Shifter
- AT
- ABS
- Airbag
- Body
- Climate
- PAM(Parking aid module)
- AFLS(Adaptive Front Lighting Systems)

[Back to Index](#)

PEUGEOT/CITROEN

New type added

208 (P21) (2017~)

- Touch screen
- EMF_DGT_UDS_GP

301 (2017~)

- Diesel additive pump
- PADDGO

307 (2001~2005)

- ABS/ESP
- ABS BOSCH 5.3.

308 (2007~2015)

- Diesel additive pump
- PADDGO

308 (T9) (2013~2021)

- Diesel additive pump
- PADDGO

807 (2002~2014)

- Engine
- DCM3.5_BR2

3008 (2009~)

- Diesel additive pump
- PADDGO
- POMPE_MUX_TI

5008 (2009~2016)

- Engine
- HDI_SID807_BR2

PARTNER (B9) (2008~2018)

- Diesel additive pump
- PADDGO

C3 (B618) (2018~)

- Diesel additive pump
- PADDGO_TI_E6

C3 Aircross (A88) (2017~)

- Diesel additive pump
- PADDGO
- PADDGO_TI_E6

C4 (2004~2011)

- Engine
- ME745

C4 II (2011~2015)

- Engine
- ME745

C4 Cactus E3 (2014~)

- Diesel additive pump
- PADDGO

C4 Cactus F3 (2014~)

- Diesel additive pump
- PADDGO
- PADDGO_TI_E6

C5 (X7) (2008~)

- Engine
- DCM3.4_P

C-ELYSEE(2002~)

- Diesel additive pump
- PADDGO_TI_E6

DS3 (2010~)

- Diesel additive pump
- PADDGO

DS4 (2011~)

- Diesel additive pump
- POMPE_MUX_TI

DS5 (2011~)

- Diesel additive pump
- POMPE_MUX_TI

Berlingo (B9) (2015~)

- Diesel additive pump
- PADDGO

New system added

207 (2006~2011)

Diesel additive pump

- PADDGO

208 (2012~2015)

Diesel additive pump

- PADDGO

Driver's door module

- PDPC_UDS

208 (P21) (2017~)

Front right seat heated pads and ventilation regulation ECU

- BRNC_AVD

Front left seat heated pads and ventilation regulation ECU

- BRNC_AVG

Passenger compartment LEDs management ECU

- PLMB

Sequential gear lever

- ESM

301 (2014~)

Diesel additive pump

- PADDGO

- PADDGO_TI_E6

307 (2001~2005)

Diesel additive pump

- PADDGO

307 (CAN) (2005~2008)

Diesel additive pump

408 (T73) (2010~2015)

Diesel additive pump

- PADDGO

- PADDGO_TI_E6

Seat belt not fastened warning lights unit

- TNB

508 RXH (2014~)

Seat belt not fastened warning lights unit

- TNB_2010

508 (R8) (2017~)

Front right seat heated pads and ventilation regulation ECU

- BRNC_AVD

Front left seat heated pads and ventilation regulation ECU

- BRNC_AVG

508L (R83) (2017~)

Front right seat heated pads and ventilation regulation ECU

- BRNC_AVD

Front left seat heated pads and ventilation regulation ECU

- BRNC_AVG

607 (1999~2004)

ABS/ESP

- ABS BOSCH 5.3.

2008 (2013~)

Diesel additive pump

- PADDGO

- PADDGO_TI_E6

2008(P24) (2017~)

Driver's door module

- PDPC_UDS

Front right seat heated pads and ventilation regulation ECU

- BRNC_AVD

Front left seat heated pads and ventilation regulation ECU

- BRNC_AVG

Passenger compartment LEDs management ECU

- PLMB

3008 Hybrid 4 (2014~)

Diesel additive pump

- POMPE_MUX_TI

3008(P84) (2017~)

Driver's door module

- PDPC_UDS

- PDPC_UDS(with a seat memorisation control unit)

Front right seat heated pads and ventilation regulation ECU

- BRNC_AVD

Front left seat heated pads and ventilation regulation ECU

- BRNC_AVG

5008 (2009~2016)

Vehicle distance assistance

- ARTIV
- Diesel additive pump
- PADDGO
- PADDGO_TI_E6
- POMPE_MUX_TI

Seat belt not fastened warning lights unit
 - TNB

5008 (P87)(2016~)

Driver's door module
 - PDPC_UDS
 - PDPC_UDS(with a seat memorisation control unit)

Front right seat heated pads and ventilation regulation ECU
 - BRNC_AVD

Front left seat heated pads and ventilation regulation ECU
 - BRNC_AVG

PARTNER/RIFTER (K9) (2018~)

Driver's door module
 - PDPC_UDS

PARTNER (2002~2007)

Diesel additive pump
 - PADDGO
 - PADDGO_TI_E6
 - POMPE_MUX_TI

RCZ (2010~2015)

Diesel additive pump
 - PADDGO
 - POMPE_MUX_TI

C3 (A51) (2010~2016)

Controls under the steering wheel
 - HDC

Seat belt not fastened warning lights unit
 - TNB

C3 PICASSO (2009~)

Diesel additive pump
 - PADDGO

Seat belt not fastened warning lights unit
 - TNB

C4 (2004~2011)

Diesel additive
 - ADDGO3

Diesel additive pump

- PADDGO

Controls under the steering wheel

- VCCF

C4 II (2011~2015)

Diesel additive pump
 - POMPE_MUX_TI
 - PADDGO_TI_E6

C4 PICASSO (2005~2013)

Diesel additive pump
 - POMPE_MUX_TI
 - PADDGO

C5 R (2007~2015)

Diesel additive
 - ADDGO3

C5 (X7) (2008~)

Seat belt not fastened warning lights unit
 - TNB

C5 Aircross (2017 ~)

Front right seat heated pads and ventilation regulation ECU
 - BRNC_AVD

Front left seat heated pads and ventilation regulation ECU
 - BRNC_AVG

DS3 (2010~)

Seat belt not fastened warning lights unit
 - TNB

DS4 (2011~)

Seat belt not fastened warning lights unit
 - TNB_2010

DS5 (2011~)

Seat belt not fastened warning lights unit
 - TNB_2010

DS5 Hybrid 4 (2016~)

Diesel additive pump
 - POMPE_MUX_TI
 - PADDGO_TI_E6

Seat belt not fastened warning lights unit
 - TNB_2010

New ID added



Zenith Distributor Bulletin

2025 Jan. Update Details

January 16, 2025

- Engine CMM_DCM71
- ABS/ESP ESPMK100_UDS

System function enhanced

- Engine HDI_SID807_BR2
- Basic Function
- DTC Analysis
- Data Analysis

- Engine ME745
- Basic Function
- DTC Analysis
- Data Analysis

- Engine EDC16C39
- Basic Function
- DTC Analysis
- Data Analysis

- Engine PUMA
- Basic Function
- DTC Analysis

- Engine DCM62_F
- Basic Function
- DTC Analysis

- Engine EDC17CP52_UDS
- Basic Function
- DTC Analysis

- Engine SID208
- Basic Function
- DTC Analysis

- Engine HDI_8DF3
- Basic Function
- DTC Analysis

- Engine MM5NP
- Basic Function
- DTC Analysis

- Engine WJY LUCAS DCN2
- Basic Function
- DTC Analysis

- Engine MM48P
- Basic Function
- DTC Analysis

- Engine MM6LP
- Basic Function
- DTC Analysis

- Engine MEVD17_4_4
- Basic Function
- DTC Analysis

- Engine MEV17_4_EURO5
- Basic Function
- DTC Analysis

- Engine MEV17_4_EURO4
- Basic Function
- DTC Analysis

- Engine MEVD17_4_2
- Basic Function
- DTC Analysis

- Engine DCM35
- Basic Function
- DTC Analysis

- Engine DCM35_BR2
- Basic Function
- DTC Analysis

- Engine DCM35_HY
- Basic Function
- DTC Analysis

- Engine MED17_4_EURO4
- Basic Function
- DTC Analysis
- Data Analysis

- Engine MED17_4_EURO5
- Basic Function
- DTC Analysis

- Engine MED17_4_2
- Basic Function
- DTC Analysis

- Engine DCM34
- Basic Function
- DTC Analysis

- Engine DCM34_P
- Basic Function
- DTC Analysis
- Data Analysis
- Actuation Test
- ECU Information Display

- Engine DCM34
- Basic Function
- DTC Analysis

For more information, please email Sales@OEMtools.com, or call 877-263-4897

Built-in systems interface BCM - Basic Function DTC Analysis	Controls on the steering wheel/integral controls steering wheel VCI - Basic Function DTC Analysis Data Analysis ECU Information Display
Built-in systems interface NBC - Basic Function DTC Analysis	Controls under the steering wheel HDC - Basic Function Data Analysis Actuation Test
Built-in systems interface BSI2010_EV - Basic Function DTC Analysis	Controls under the steering wheel VCCF - Basic Function DTC Analysis Data Analysis Actuation Test
Gearbox BVA_AM6 - Basic Function DTC Analysis	Diesel additive pump PADDGO - Basic Function DTC Analysis Data Analysis Actuation Test ECU Information Display
Power steering SSCU - Basic Function DTC Analysis	Diesel additive pump PADDGO_TI_E6 - Basic Function DTC Analysis
ABS/ESP ESP90_F - Basic Function DTC Analysis	Diesel additive pump POMPE_MUX_TI - Basic Function DTC Analysis Data Analysis Actuation Test ECU Information Display
ABS/ESP ABS81 - Basic Function DTC Analysis	Diesel additive ADDGO3 - Basic Function Data Analysis Actuation Test
ABS/ESP EBS81 - Basic Function DTC Analysis	Auto select function enhanced
Airbags and pretensioners ECU SAC_TRW - Basic Function DTC Analysis	Feedback
Vehicle distance assistance ARTIV - Basic Function DTC Analysis	Korea : C4 PICASSO(B78) (2012~) ABS ESP90 Special Function bug fixed UAE : 607 (1999~2004) Engine 4HX BOSCH EDC15C2 comms bug fixed Korea : 308 (2007~2015) Engine SID807 Special Function Korean translation UAE : 406 (1999~2003) Engine SID807 comms bug fixed Chile : TRAVELLER(2016~) Engine DCM71 DTC Analysis bug fixed UAE : 307 (2001~2005) ABS/ESP ESP BOSCH 8, Built-
Diesel additive pump PADDGO_TI_UDS - Basic Function DTC Analysis	
Lane wandering alert HALF - Basic Function DTC Analysis	
Driver's door module PDPC - Basic Function DTC Analysis Data Analysis Actuation Test	

For more information, please email Sales@OEMtools.com, or call 877-263-4897

in systems interface DTC Analysis enhanced

[Back to Index](#)

VOLVO

CAN/DOIP system search Logic Improved

AutoVIN search error modified

Open security logic improved

New model added

XC40 2024

- ECM - Engine Control Module
- TCM - Transmission Control Module
- ASDM - Active Safety Domain Master
- AUD - Audio Module
- BBS - Battery Backed-up Sounder
- BCM2 - Brake Control Module 2
- BECM - Battery Energy Control Module
- BMS - Battery Monitoring Sensor
- CCM - Climate Control Module
- CEM - Central Electronic Module
- CCD - Center Console Display
- DDM - Driver Door Module
- DIM - Driver Information Module
- EGSM - Electronic Gear Selector Module
- FLC2 - Forward Looking Camera 2
- FLR - Forward Looking Radar
- HCML - Headlamp Control Module Left
- HCMR - Headlamp Control Module Right
- IEM - Inverter Electric Rear Axle Drive Module
- IHFA - Inverter High Voltage Front Axle
- IHU - Infotainment Head Unit
- OBC - On-Board Charger Module
- OHC - Overhead Console Control module
- PDM - Passenger Door Module
- POT - Power Operated Tailgate Module
- PSCM - Power Steering Control Module
- PXML - Left pixel module
- PXMR - Right pixel module
- RML - Restraint Module Left
- RMR - Restraint Module Right
- SAS - Steering Angle Sensor Module
- SODL - Side Obstacle Detection Control Module left
- SODR - Side Obstacle Detection Control Module Right
- SRS - Supplemental Restraint System Module
- SWM - Steering Wheel Module
- TCAM - Telematics Connectivity and Antenna Module
- VCU1 - Vehicle Computational Unit 1
- VGM - Vehicle Gateway Module

- WAM - Wide Angle Vision Module
- WPC - Wireless Phone Charge

XC60 2022~2024

- ECM - Engine Control Module
- TCM - Transmission Control Module
- ASDM - Active Safety Domain Master
- AUD - Audio Module
- BBS - Battery Backed-up Sounder
- BMS - Battery Monitoring Sensor
- BECM - Battery Energy Control Module
- BCM2 - Brake Control Module 2
- CCD - Center Console Display
- CEM - Central Electronic Module
- CCM - Climate Control Module
- DEM - Differential Electronic Module
- DDM - Driver Door Module
- DIM - Driver Information Module
- EGSM - Electronic Gear Selector Module
- FLC2 - Forward Looking Camera 2
- FLR - Forward Looking Radar
- HCML - Headlamp Control Module Left
- HCMR - Headlamp Control Module Right
- IHU - Infotainment Head Unit
- ISGM - Integrated Starter Generator Module
- MVBM - Mid Voltage Battery Module
- MVCM - Mid Voltage Converter Module
- OHC - Overhead Console Control module
- PDM - Passenger Door Module
- PSMD - Power Seat Module Driver
- PSMP - Power Seat Module Passenger
- PSCM - Power Steering Control Module
- POT - Power Operated Tailgate Module
- RML - Restraint Module Left
- RMR - Restraint Module Right
- SODL - Side Obstacle Detection Control Module left
- SODR - Side Obstacle Detection Control Module Right
- SAS - Steering Angle Sensor Module
- SWM - Steering Wheel Module
- SRS - Supplemental Restraint System Module
- TCAM - Telematics Connectivity and Antenna Module
- VCU1 - Vehicle Computational Unit 1
- VGM - Vehicle Gateway Module
- WAM - Wide Angle Vision Module

XC90 2022~2024

- ECM - Engine Control Module
- TCM - Transmission Control Module
- ASDM - Active Safety Domain Master
- AUD - Audio Module
- BBS - Battery Backed-up Sounder
- BMS - Battery Monitoring Sensor
- BECM - Battery Energy Control Module
- BCM2 - Brake Control Module 2
- CCD - Center Console Display

For more information, please email Sales@OEMtools.com, or call 877-263-4897



Zenith Distributor Bulletin

2025 Jan. Update Details

January 16, 2025

- CEM - Central Electronic Module
- CCM - Climate Control Module
- DEM - Differential Electronic Module
- DDM - Driver Door Module
- DIM - Driver Information Module
- EGSM - Electronic Gear Selector Module
- FLC2 - Forward Looking Camera 2
- FLR - Forward Looking Radar
- HCML - Headlamp Control Module Left
- HCMR - Headlamp Control Module Right
- IHU - Infotainment Head Unit
- ISGM - Integrated Starter Generator Module
- MVBM - Mid Voltage Battery Module
- MVCM - Mid Voltage Converter Module
- OHC - Overhead Consol Control module
- PDM - Passenger Door Module
- PSMD - Power Seat Module Driver
- PSMP - Power Seat Module Passenger
- PSCM - Power Steering Control Module
- POT - Power Operated Tailgate Module
- RML - Restraint Module Left
- RMR - Restraint Module Right
- SODL - Side Obstacle Detection Control Module left
- SODR - Side Obstacle Detection Control Module Right
- SAS - Steering Angle Sensor Module
- SWM - Steering Wheel Module
- SRS - Supplemental Restraint System Module
- TCAM - Telematics Connectivity and Antenna Module
- VCU1 - Vehicle Computational Unit 1
- VGM - Vehicle Gateway Module
- WAM - Wide Angle Vision Module

C40 Recharge 2022~2024

- ECM - Engine Control Module
- TCM - Transmission Control Module
- ASDM - Active Safety Domain Master
- AUD - Audio Module
- BBS - Battery Backed-up Sounder
- BCM2 - Brake Control Module 2
- BECM - Battery Energy Control Module
- BMS - Battery Monitoring Sensor
- CCM - Climate Control Module
- CEM - Central Electronic Module
- CCD - Ceter Console Display
- DDM - Driver Door Module
- DIM - Driver Information Module
- EGSM - lectronic Gear Selector Module
- FLC2 - Forward Looking Camera 2
- FLR - Forward Looking Radar
- HCML - Headlamp Control Module Left
- HCMR - Headlamp Control Module Right
- IEM - Inverter Electric Rear Axle Drive Module
- IHFA - Inverter High Voltage Front Axle
- IHU - Infotainment Head Unit
- OBC - On-Board Charger Module

- OHC - Overhead Consol Control module
- PDM - Passenger Door Module
- POT - Power Operated Tailgate Module
- PSCM - Power Steering Control Module
- PXML - Left pixel module
- PXMR - Right pixel module
- RML - Restraint Module Left
- RMR - Restraint Module Right
- SAS - Steering Angle Sensor Module
- SODL - Side Obstacle Detection Control Module left
- SODR - Side Obstacle Detection Control Module Right
- SRS - Supplemental Restraint System Module
- SWM - Steering Wheel Module
- TCAM - Telematics Connectivity and Antenna Module
- VCU1 - Vehicle Computational Unit 1
- VGM - Vehicle Gateway Module
- WAM - Wide Angle Vision Module
- WPC - Wireless Phone Charge

New function added

2008~2018 all vehicles

DIM

- Special Function

Resetting service reminder indicator (SRI)

DTC Erase Memory modified

Polestar2 / XC40 2022~2024 all systems

New system added

C30 2010

ECM - Engine Control Module

- Basic Function
- DTC analysis
- Data analysis
- Actuation test
- ECU information

DTC item added

XC90 2007

- ECM

XC90 2013

- ECM

XC90 2017

- ECM

XC90 2019

- CCM

- ECM

XC90 2021

- ECM

S90 2021

For more information, please email Sales@OEMtools.com, or call 877-263-4897

- ABS/BCM

XC60 2018

- CCM
- ECM

XC60 2019

- ABS/BCM
- AUD

XC40 2022

- ECM

XC40 2023

- ECM

[Back to Index](#)

FORD USA/Lincoln

New model added

Ecosport 1.5L DRAGON I3 TIVCT PFI GAS A 2018 ~

- PCM(Powertrain Control Module)
- ABS(Anti-Lock Brake System)
- ACM(Audio Front Control Module)
- APIM(SYNC Module)
- BCM(Body Control Module)
- DDM(Driver Door Module)
- GWM(Gateway Module A)
- HVAC(Heating Ventilation And Air Conditioning)
- IPC(Instrument Panel Control Module)
- PAM(Parking Assist Control Module)
- PDM(Passenger Door Module)
- PSCM(Power Steering Control Module)
- RCM(Restraint Control Module)
- SCCM(Steering Column Control Module)
- TCU(Telematics Control Unit Module)
- SOD-L(Side Obstacle Detection Control Module LH)
- SOD-R(Side Obstacle Detection Control Module RH)

Edge 2.0L EcoBoost (240PS) 2021 ~

- PCM(Powertrain Control Module)
- ABS(Anti-Lock Brake System)
- ACM(Audio Front Control Module)
- APIM(Accessory Protocol Interface Module)
- AWD(All-Wheel Drive)
- BCM(Body Control Module)
- CCM(Cruise Control Module)
- DCDC(Direct Current/Direct Current Converter Control Module)
- DDM(Driver Door Module)
- GSM(Gear Shift Module)

- GWM(Gateway Module A)
- HSWM(Heated Steering Wheel Module)
- HVAC(Heating Ventilation And Air Conditioning)
- IPC(Instrument Panel Cluster)
- IPM-A(Image Processing Module A)
- OCSM(Occupant Classification System Module)
- PAM(Parking Assist Control Module)
- PDM(Passenger Door Module)
- PSCM(Power Steering Control Module)
- RCM(Restraints Control Module)
- RGTM(Rear Gate Trunk Module)
- RTM(Radio Transceiver Module)
- SCCM(Steering Column Control Module)
- SODL(Side Obstacle Detection Control Module LH)
- SODR(Side Obstacle Detection Control Module RH)
- TCU(Telematics Control Unit Module)
- WACM(Wireless Accessory Charging Module)

Edge 2.7L DOHC 4V DI GT V6 GAS 2021 ~

- PCM(Powertrain Control Module)
- ABS(Anti-Lock Brake System)
- ACM(Audio Front Control Module)
- APIM(Accessory Protocol Interface Module)
- AWD(All-Wheel Drive)
- BCM(Body Control Module)
- CCM(Cruise Control Module)
- DACMC(Digital Audio Control Module C)
- DCDC(Direct Current/Direct Current Converter Control Module)
- DDM(Driver Door Module)
- DSM(Driver Front Seat Module)
- DSP(Audio Digital Signal Processing Module)
- GSM(Gear Shift Module)
- GWM(Gateway Module A)
- HCM(Headlamp Control Module)
- HSWM(Heated Steering Wheel Module)
- HVAC(Heating Ventilation And Air Conditioning)
- IPC(Instrument Panel Cluster)
- IPM-A(Image Processing Module A)
- IPM-B(Image Processing Module B)
- OCSM(Occupant Classification System Module)
- PAM(Parking Assist Control Module)
- PDM(Passenger Door Module)
- PSCM(Power Steering Control Module)
- RCM(Restraints Control Module)
- RGTM(Rear Gate Trunk Module)
- RTM(Radio Transceiver Module)
- SCCM(Steering Column Control Module)
- SCME(Front Seat Climate Control Module)
- SODL(Side Obstacle Detection Control Module LH)
- SODR(Side Obstacle Detection Control Module RH)
- TCU(Telematics Control Unit Module)
- TRM(Trailer Module)
- WACM(Wireless Accessory Charging Module)

F150 5.2L Predator 2024 ~

- PCM(Powertrain Control Module)
- ABS(Anti-Lock Brake System)
- ACM(Audio Front Control Module)
- APIM(Accessory Protocol Interface Module)
- ATCM(All Terrain Control Module)
- BCM(Body Control Module)
- BCMC(Body Control Module C)
- CCM(Cruise Control Module)
- DDM(Driver Door Module)
- DSM(Driver Front Seat Module)
- DSP(Audio Digital Signal Processing Module)
- GSM(Gear Shift Module)
- GWM(Gateway Module A)
- HCM(Headlamp Control Module)
- HUD(Head Up Display)
- HVAC(Heating Ventilation And Air Conditioning)
- IPC(Instrument Panel Control Module)
- IPM-A(Image Processing Module A)
- OCSM(Occupant Classification System Module)
- PDM(Passenger Door Module)
- PSCM(Power Steering Control Module)
- RCM(Restraints Control Module)
- RGTM(Rear Gate Trunk Module)
- RTM(Radio Transceiver Module)
- SCCM(Steering Column Control Module)
- SODL(Side Obstacle Detection Control Module LH)
- SODR(Side Obstacle Detection Control Module RH)
- TCCM(Transfer Case Control Module)
- TCU(Telematics Control Unit Module)
- TRM(Trailer Module)
- VDM(Vehicle Dynamics Control Module)
- WACM(Wireless Accessory Charging Module)

ESCAPE 2.5L DURA D4 IVCT ATK HEV/PHEV 2020 ~

- PCM(Powertrain Control Module)
- ABS(Anti-Lock Brake System)
- ACCM(Air Conditioning Control Module)
- ACM(Audio Front Control Module)
- APIM(Accessory Protocol Interface Module)
- BCM(Body Control Module)
- BCMC(Body Control Module C)
- BECM(Battery Energy Control Module)
- BECMB(Battery Energy Control Module B)
- CCM(Cruise Control Module)
- DCDC(Direct Current/Direct Current Converter Control Module)
- DDM(Driver Door Module)
- DSM(Driver Front Seat Module)
- DSP(Audio Digital Signal Processing Module)
- GSM(Gear Shift Module)
- GWM(Gateway Module A)
- HVAC(Heating Ventilation And Air Conditioning)
- IPC(Instrument Panel Cluster)
- IPM-A(Image Processing Module A)

- OCSM(Occupant Classification System Module)
- PACM(Pedestrian Alert Control Module)
- PAM(Parking Assist Control Module)
- PDM(Passenger Door Module)
- PSCM(Power Steering Control Module)
- RCM(Restraints Control Module)
- RGTM(Rear Gate Trunk Module)
- RTM(Radio Transceiver Module)
- SCCM(Steering Column Control Module)
- SOBDM(Secondary On-Board Diagnostic Control Module A)
- SOBDMC(Secondary On-Board Diagnostic Control Module C)
- SODL(Side Obstacle Detection Control Module LH)
- SODR(Side Obstacle Detection Control Module RH)
- TCU(Telematic Control Unit Module)
- WACM(Wireless Accessory Charging Module)

F250 6.7L 4V V8 T/C Diesel 2021 ~

- PCM(Powertrain Control Module)
- ABS(Anti-Lock Brake System)
- ACM(Audio Front Control Module)
- APIM(Accessory Protocol Interface Module)
- BCM(Body Control Module)
- CCM(Cruise Control Module)
- DDM(Driver Door Module)
- DSM(Driver Front Seat Module)
- DSP(Audio Digital Signal Processing Module)
- GWM(Gateway Module A)
- HVAC(Heating Ventilation And Air Conditioning)
- IPC(Instrument Panel Cluster)
- IPM-A(Image Processing Module A)
- IPM-B(Image Processing Module B)
- PAM(Parking Assist Control Module)
- PDM(Passenger Door Module)
- PSCM(Power Steering Control Module)
- RCM(Restraints Control Module)
- RTM(Radio Transceiver Module)
- SCCM(Steering Column Control Module)
- SCME(Front Seat Climate Control Module)
- SODL(Side Obstacle Detection Control Module LH)
- SODR(Side Obstacle Detection Control Module RH)
- TCCM(Transfer Case Control Module)
- TCM(Transmission Control Module)
- TCU(Telematics Control Unit Module)
- TRM(Trailer Module)
- WACM(Wireless Accessory Charging Module)

F-Series Super Duty 6.7L 4V V8 T/C Diesel 2021 ~

- PCM(Powertrain Control Module)
- ABS(Anti-Lock Brake System)
- ACM(Audio Front Control Module)
- APIM(Accessory Protocol Interface Module)
- BCM(Body Control Module)
- CCM(Cruise Control Module)



Zenith Distributor Bulletin

2025 Jan. Update Details

January 16, 2025

- DDM(Driver Door Module)
- DSM(Driver Front Seat Module)
- DSP(Audio Digital Signal Processing Module)
- GWM(Gateway Module A)
- HVAC(Heating Ventilation And Air Conditioning)
- IPC(Instrument Panel Cluster)
- IPM-A(Image Processing Module A)
- IPM-B(Image Processing Module B)
- PAM(Parking Assist Control Module)
- PDM(Passenger Door Module)
- PSCM(Power Steering Control Module)
- RCM(Restraints Control Module)
- RTM(Radio Transceiver Module)
- SCCM(Steering Column Control Module)
- SCME(Front Seat Climate Control Module)
- SODL(Side Obstacle Detection Control Module LH)
- SODR(Side Obstacle Detection Control Module RH)
- TCCM(Transfer Case Control Module)
- TCM(Transmission Control Module)
- TCU(Telematics Control Unit Module)
- TRM(Trailer Module)
- WACM(Wireless Accessory Charging Module)

F-650/F-750 6.7L 4V V8 T/C Diesel 2021 ~

- PCM(Powertrain Control Module)
- ABS(Anti-Lock Brake System)
- ACM(Audio Front Control Module)
- APIM(Accessory Protocol Interface Module)
- BCM(Body Control Module)
- CCM(Cruise Control Module)
- DDM(Driver Door Module)
- DSM(Driver Front Seat Module)
- DSP(Audio Digital Signal Processing Module)
- GWM(Gateway Module A)
- HVAC(Heating Ventilation And Air Conditioning)
- IPC(Instrument Panel Cluster)
- IPM-A(Image Processing Module A)
- IPM-B(Image Processing Module B)
- PAM(Parking Assist Control Module)
- PDM(Passenger Door Module)
- PSCM(Power Steering Control Module)
- RCM(Restraints Control Module)
- RTM(Radio Transceiver Module)
- SCCM(Steering Column Control Module)
- SCME(Front Seat Climate Control Module)
- SODL(Side Obstacle Detection Control Module LH)
- SODR(Side Obstacle Detection Control Module RH)
- TCCM(Transfer Case Control Module)
- TCM(Transmission Control Module)
- TCU(Telematics Control Unit Module)
- TRM(Trailer Module)
- WACM(Wireless Accessory Charging Module)

Escape 2.0L GTDI A 2023 ~

- PCM(Powertrain Control Module)

- ABS(Anti-Lock Brake System)
- ACM(Audio Front Control Module)
- APIM(Accessory Protocol Interface Module)
- AWD(All Wheel Drive Module)
- BCM(Body Control Module)
- BECMB(Battery Energy Control Module B)
- CCM(Cruise Control Module)
- DDM(Driver Door Module)
- DSM(Driver Front Seat Module)
- DSP(Audio Digital Signal Processing Module)
- GSM(Gear Shift Module)
- GWM(Gateway Module A)
- HUD(Head Up Display)
- HVAC(Heating Ventilation And Air Conditioning)
- IPC(Instrument Panel Control Module)
- IPM-A(Image Processing Module A)
- OCSM(Occupant Classification System Module)
- PDM(Passenger Door Module)
- PSCM(Power Steering Control Module)
- RCM(Restraints Control Module)
- RGTM(Rear Gate Trunk Module)
- RTM(Radio Transceiver Module)
- SCCM(Steering Column Control Module)
- SODL(Side Obstacle Detection Control Module LH)
- SODR(Side Obstacle Detection Control Module RH)
- TCU(Telematics Control Unit Module)
- TRM(Trailer Module)
- WACM(Wireless Accessory Charging Module)

F150 3.3L DURATEC 2021 ~

- PCM(Powertrain Control Module)
- ABS(Anti-Lock Brake System)
- ACM(Audio Front Control Module)
- APIM(Accessory Protocol Interface Module)
- ATCM(All Terrain Control Module)
- BCM(Body Control Module)
- BCMC(Body Control Module C)
- CCM(Cruise Control Module)
- CMR(Camera Module - Rear)
- DCACA(Direct Current/Alternating Current Converter Module A)
- DDM(Driver Door Module)
- DSM(Driver Front Seat Module)
- DSP(Audio Digital Signal Processing Module)
- GSM(Gear Shift Module)
- GWM(Gateway Module A)
- HCM(Headlamp Control Module)
- HVAC(Heating Ventilation And Air Conditioning)
- IPC(Instrument Panel Control Module)
- IPM-A(Image Processing Module A)
- OCSM(Occupant Classification System Module)
- PDM(Passenger Door Module)
- PSCM(Power Steering Control Module)
- RCM(Restraints Control Module)
- RGTM(Rear Gate Trunk Module)

For more information, please email Sales@OEMtools.com, or call 877-263-4897

- RTM(Radio Transceiver Module)
- SCCM(Steering Column Control Module)
- SODCMC(Side Obstacle Detection Control Module C)
- SODCMD(Side Obstacle Detection Control Module D)
- SODL(Side Obstacle Detection Control Module LH)
- SODR(Side Obstacle Detection Control Module RH)
- TCCM(Transfer Case Control Module)
- TCM(Transmission Control Module)
- TCU(Telematics Control Unit Module)
- TRM(Trailer Module)
- VDM(Vehicle Dynamics Control Module)
- WACM(Wireless Accessory Charging Module)

Mustang 5.0L 4V DOHC SEFI NA 2024 ~

- PCM(Powertrain Control Module)
- ABS(Anti-Lock Brake System)
- ACM(Audio Front Control Module)
- APIM(Accessory Protocol Interface Module)
- BCM(Body Control Module)
- BCMB(Body Control Module B)
- BCMC(Body Control Module C)
- CCM(Cruise Control Module)
- DDM(Driver Door Module)
- DSM(Driver Front Seat Module)
- DSP(Audio Digital Signal Processing Module)
- GWM(Gateway Module A)
- HCM(Headlamp Control Module)
- HVAC(Heating Ventilation And Air Conditioning)
- IPC(Instrument Panel Control Module)
- IPM-A(Image Processing Module A)
- LDCMA(Lighting Driver Control Module A)
- LDCMB(Lighting Driver Control Module B)
- OCSM(Occupant Classification System Module)
- PDM(Passenger Door Module)
- PSCM(Power Steering Control Module)
- RCM(Restraints Control Module)
- RTM(Radio Transceiver Module)
- SCCM(Steering Column Control Module)
- SODL(Side Obstacle Detection Control Module LH)
- SODR(Side Obstacle Detection Control Module RH)
- TCU(Telematics Control Unit Module)
- WACM(Wireless Accessory Charging Module)

Ranger 2.3L 4V TIVCT DI TC Gas 2019 ~ 2024

- PCM(Powertrain Control Module)
- ABS(Anti-Lock Brake System)
- ACM(Audio Control Module)
- APIM(Accessory Protocol Interface Module)
- BCM(Body Control Module)
- BECMB(Battery Energy Control Module B)
- DCDC(Direct Current/Direct Current Converter Control Module)
- FCIM(Front Controls Interface Module)
- GWM(Gateway Module A)
- IPC(Instrument Panel Cluster)

- IPM-A(Image Processing Module A)
- OCSM(Occupant Classification System Module)
- PAM(Parking Aid Module)
- PSCM(Power Steering Control Module)
- RCM(Restraint Control Module)
- RTM(Radio Transceiver Module)
- SCCM(Steering Column Control Module)
- SODL(Side Obstacle Detection Control Module LH)
- SODR(Side Obstacle Detection Control Module RH)
- TCU(Telematics Control Unit Module)
- TRM(Trailer Module)

Corsair 2.5L DURA D4 IVCT ATK HEV/PHEV 2021 ~

- PCM(Powertrain Control Module)
- ABS(Anti-Lock Brake System)
- ACCM(Air Conditioning Control Module)
- ACM(Audio Front Control Module)
- APIM(Accessory Protocol Interface Module)
- ATCM(All Terrain Control Module)
- BCM(Body Control Module)
- BCMC(Body Control Module C)
- BECM(Battery Energy Control Module)
- BECMB(Battery Energy Control Module B)
- CCM(Cruise Control Module)
- DCDC(Direct Current/Direct Current Converter Control Module)
- DDM(Driver Door Module)
- DSM(Driver Front Seat Module)
- DSP(Audio Digital Signal Processing Module)
- FCIMB(Front Controls Interface Module B)
- GSM(Gear Shift Module)
- GWM(Gateway Module A)
- HCM(Headlamp Control Module)
- HUD(Head Up Display)
- HVAC(Heating Ventilation And Air Conditioning)
- IPC(Instrument Panel Cluster)
- IPM-A(Image Processing Module A)
- IPM-B(Image Processing Module B)
- OCSM(Occupant Classification System Module)
- PACM(Pedestrian Alert Control Module)
- PDM(Passenger Door Module)
- PSCM(Power Steering Control Module)
- RCM(Restraints Control Module)
- RFA(Remote Function Actuator)
- RGTM(Rear Gate Trunk Module)
- RTM(Radio Transceiver Module)
- SCCM(Steering Column Control Module)
- SCMB(Passenger Front Seat Module)
- SCME(Front Seat Climate Control Module)
- SCMG(Driver Multi-Contour Seat Module)
- SCMH(Passenger Multi-Contour Seat Module)
- SIMA(Switch Input Module A)
- SOBDM(Secondary On-Board Diagnostic Control Module A)
- SOBDMB(Secondary On-Board Diagnostic Control

Module B)

- SOBDMC(Secondary On-Board Diagnostic Control Module C)
- SODL(Side Obstacle Detection Control Module LH)
- SODR(Side Obstacle Detection Control Module RH)
- TCU(Telematic Control Unit Module)
- VDM(Vehicle Dynamics Control Module)
- WACM(Wireless Accessory Charging Module)

Corsair 2.0L GTDI A 2023 ~

- PCM(Powertrain Control Module)
- ABS(Anti-Lock Brake System)
- ACM(Audio Front Control Module)
- APIM(Accessory Protocol Interface Module)
- ATCM(All Terrain Control Module)
- AWD(All Wheel Drive Module)
- BCM(Body Control Module)
- BECMB(Battery Energy Control Module B)
- CCM(Cruise Control Module)
- CMR(Camera Module - Rear)
- DDM(Driver Door Module)
- DSM(Driver Front Seat Module)
- DSP(Audio Digital Signal Processing Module)
- GSM(Gear Shift Module)
- GWM(Gateway Module A)
- HCM(Headlamp Control Module)
- HUD(Head Up Display)
- HVAC(Heating Ventilation And Air Conditioning)
- IPC(Instrument Panel Control Module)
- IPM-A(Image Processing Module A)
- OCSM(Occupant Classification System Module)
- PDM(Passenger Door Module)
- PSCM(Power Steering Control Module)
- RCM(Restraints Control Module)
- RFA(Remote Function Actuator)
- RGTM(Rear Gate Trunk Module)
- RTM(Radio Transceiver Module)
- SCCM(Steering Column Control Module)
- SCMB(Passenger Front Seat Module)
- SCME(Front Seat Climate Control Module)
- SIMA(Switch Input Module A)
- SODCMC(Side Obstacle Detection Control Module C)
- SODCMD(Side Obstacle Detection Control Module D)
- SODL(Side Obstacle Detection Control Module LH)
- SODR(Side Obstacle Detection Control Module RH)
- TCU(Telematics Control Unit Module)
- VDM(Vehicle Dynamic Module)
- WACM(Wireless Accessory Charging Module)

Nautilus 2.0L GTDI B 2024 ~

- PCM(Powertrain Control Module)
- ABS(Anti-Lock Brake System)
- ACCM(Air Conditioning Control Module)
- ACM(Audio Front Control Module)
- APIM(Accessory Protocol Interface Module)

- AWD(All-Wheel Drive)
- BCM(Body Control Module)
- BCMB(Body Control Module B)
- BCMC(Body Control Module C)
- BECM(Battery Energy Control Module)
- CCM(Cruise Control Module)
- CMR(Camera Module - Rear)
- DCDC(Direct Current/Direct Current Converter Control Module)
- DCME(Door Control Module E)
- DCMF(Door Control Module F)
- DCMG(Door Control Module G)
- DCMH(Door Control Module H)
- DDM(Driver Door Module)
- DSM(Driver Front Seat Module)
- DSP(Audio Digital Signal Processing Module)
- GSM(Gear Shift Module)
- GWM(Gateway Module A)
- HCM(Headlamp Control Module)
- HVAC(Heating Ventilation And Air Conditioning)
- IPM-A(Image Processing Module A)
- LDCMA(Lighting Driver Control Module A)
- LDCMB(Lighting Driver Control Module B)
- OCSM(Occupant Classification System Module)
- PDM(Passenger Door Module)
- PSCM(Power Steering Control Module)
- RCM(Restraints Control Module)
- RFA(Remote Function Actuator)
- RGTM(Rear Gate Trunk Module)
- RTM(Radio Transceiver Module)
- SCCM(Steering Column Control Module)
- SCMB(Passenger Front Seat Module)
- SCMG(Driver Multi-Contour Seat Module)
- SCMH(Passenger Multi-Contour Seat Module)
- SIMA(Switch Input Module A)
- SOBDMC(Secondary On-Board Diagnostic Control Module C)
- SODCMC(Side Obstacle Detection Control Module C)
- SODCMD(Side Obstacle Detection Control Module D)
- SODL(Side Obstacle Detection Control Module LH)
- SODR(Side Obstacle Detection Control Module RH)
- TCU(Telematics Control Unit Module)
- VDM(Vehicle Dynamics Control Module)
- WACM(Wireless Accessory Charging Module)

Zephyr/MKZ 2.5L HEV/ATKINSON 4V 2011 ~ 2012

- PCM(Powertrain Control Module)
- ABS(Anti-Lock Brake System)
- 4X4(4X4 Control Module)
- ACCM(Air Conditioning Control Module)
- ACM(Audio Control Module)
- APIM(Accessory Protocol Interface Module)
- BECM(Battery Energy Control Module)
- DCDC(DC to DC Converter Control Module)
- DCSM(Driver/Dual Climate-Control Seat Module)

- DDM(Driver's Door Module)
- DSM(Driver's Seat Module)
- DSP(Digital Signal Processing Module)
- FCIM(Front Controls Interface Module)
- FDIM(Front Display Interface Module)
- GEM/SJB(Generic Electronic Module/Smart Junction Box)
- GPSM(Global Positioning System Module)
- HCM(Headlamp Control Module)
- HVAC(Heating Ventilation Air Conditioning)
- ILCM(Interior Lighting Control Module)
- IPC(Instrument Panel Control Module)
- OCSM(Occupant Classification System Module)
- PAM(Parking Aid Module)
- PSCM(Power Steering Control Module)
- RCM(Restraint Control Module)
- SOD-L(Side Obstacle Detection Control Module Left)
- SOD-R(Side Obstacle Detection Control Module Right)
- TCM(Transmission Control Module)

Navigator 3.5L CYCLON-D4- G-DI-TIVCT-UPG 2023 ~

- PCM(Powertrain Control Module)
- ABS(Anti-Lock Brake System)
- ACM(Audio Front Control Module)
- APIM(Accessory Protocol Interface Module)
- ATCM(All Terrain Control Module)
- BCM(Body Control Module)
- BCMC(Body Control Module C)
- CCM(Cruise Control Module)
- CMR(Camera Module - Rear)
- DDM(Driver Door Module)
- DSM(Driver Front Seat Module)
- DSP(Audio Digital Signal Processing Module)
- FCIM(Front Controls Interface Module)
- GSM(Gear Shift Module)
- GWM(Gateway Module A)
- HCM(Headlamp Control Module)
- HUD(Head Up Display)
- IPC(Instrument Panel Cluster)
- IPM-A(Image Processing Module A)
- LDCMA(Lighting Driver Control Module A)
- LDCMB(Lighting Driver Control Module B)
- OCSM(Occupant Classification System Module)
- PDM(Passenger Door Module)
- PSCM(Power Steering Control Module)
- RACM(Rear Audio Control Module)
- RBM(Running Board Control Module)
- RCM(Restraints Control Module)
- RFA(Remote Function Actuator)
- RGTM(Rear Gate Trunk Module)
- RTM(Radio Transceiver Module)
- SCCM(Steering Column Control Module)
- SCMB(Passenger Front Seat Module)
- SCME(Front Seat Climate Control Module)
- SCMF(Rear Seat Climate Control Module)

- SCMG(Driver Multi-Contour Seat Module)
- SCMH(Passenger Multi-Contour Seat Module)
- SCMJ(Seat Control Module J)
- SODCMC(Side Obstacle Detection Control Module C)
- SODCMD(Side Obstacle Detection Control Module D)
- SODL(Side Obstacle Detection Control Module LH)
- SODR(Side Obstacle Detection Control Module RH)
- TCCM(Transfer Case Control Module)
- TCU(Telematics Control Unit Module)
- TRM(Trailer Module)
- VDM(Vehicle Dynamics Control Module)
- WACM(Wireless Accessory Charging Module)

Topology model added

[Back to Index](#)

CHRYSLER/JEEP/DODGE

New model added

Hornet (2024my)

- ACC (Adaptive Cruise Control)
- Basic Function
- DTC Analysis
- ECU Information

AHCP (Auxiliary Hybrid Control Processor)

- Basic Function
- DTC Analysis
- ECU Information

APM (Accessory Power Module)

- Basic Function
- DTC Analysis
- ECU Information

BCM (Body Control Module)

- Basic Function
- DTC Analysis
- ECU Information

BPCM (Battery Pack Control Module)

- Basic Function
- DTC Analysis
- ECU Information

DCU (Dosing Control Unit)

- Basic Function
- DTC Analysis
- ECU Information

DTCM (Drive Train Control Module)

For more information, please email Sales@OEMtools.com, or call 877-263-4897



Zenith Distributor Bulletin

2025 Jan. Update Details

January 16, 2025

- Basic Function
 - DTC Analysis
 - Data Analysis
 - ECU Information
- Special Function
 - 2WD Dyno Mode
 - Self test
 - PTU Replacement (Power take-off unit)
 - RDU Replacement
- ESM (Electronic Shifter)
 - Basic Function
 - DTC Analysis
 - Data Analysis
 - Actuation Test
 - ECU Information
 - Special Function
 - LED Display test of gear lever position
- HCP (Hybrid Control Processor)
 - Basic Function
 - DTC Analysis
 - ECU Information
- IDCM (Integrated Dual Charge Module)
 - Basic Function
 - DTC Analysis
 - ECU Information
- IPC (Instrument Panel Cluster)
 - Basic Function
 - DTC Analysis
 - Data Analysis
 - Actuation Test
 - ECU Information
 - Special Function
 - Last Service Date
 - Reset Odometer
 - Reset Service Information
- MPCB (Motor Control Processor B)
 - Basic Function
 - DTC Analysis
 - ECU Information
- OCM (Occupant Classification)
 - Basic Function
 - DTC Analysis
 - ECU Information
- PCM (Powertrain Control Module)
 - Basic Function
 - DTC Analysis
 - Data Analysis
 - Actuation Test
- ECU Information
 - Special Function
 - Active Grille Shutter Test
 - ETC Throttle Follower Test
 - Injector Kill Test
 - O2 System Heater Test
 - Purge Vapors System Test
 - Active Grille Shutter Replaced
 - Brake Pedal Learn
 - Cam Crank Relearn
 - Clear Stored Accumulated Fuel Mass
 - GPF Regen Service Procedure
 - GPF Replace Service Procedure
 - GSE Injector Adaptation
 - Learn ETC
 - Reset Oil Change Indicator
 - Reset Memory
 - Reset VCM Adptives
 - Set Engine RPM
 - TLC Learn for PHEV
- SGW (Security Gateway Module)
 - Basic Function
 - DTC Analysis
 - Data Analysis
 - ECU Information
- TBM2 (Telematic Box Module 2)
 - Basic Function
 - DTC Analysis
 - ECU Information
- TCM (Transmission Control Module)
 - Basic Function
 - DTC Analysis
 - Data Analysis
 - Actuation Test
 - ECU Information
 - Special Function
 - Clear Self Learning Data
 - N Position Self Learning
- WSMD (Window Smart Motor Driver)
 - Basic Function
 - DTC Analysis
 - ECU Information
- WSMP (Window Smart Motor Passenger)
 - Basic Function
 - DTC Analysis
 - ECU Information
- WSMRL (Window Smart Motor Rear Left)
 - Basic Function
 - DTC Analysis

For more information, please email Sales@OEMtools.com, or call 877-263-4897



Zenith Distributor Bulletin

2025 Jan. Update Details

January 16, 2025

ECU Information

WSMRR (Window Smart Motor Rear Right)

- Basic Function
- DTC Analysis
- ECU Information

AMP (Amplifier)

- Basic Function
- DTC Analysis
- ECU Information

CSWM (Comfort Seat Wheel Module)

- Basic Function
- DTC Analysis
- Data Analysis
- Actuation Test
- ECU Information
- Special Function
- Slide Initialization

CVPM (Central Vision Processing Module)

- Basic Function
- DTC Analysis
- ECU Information

DSCM (Drive Style Control Module)

- Basic Function
- DTC Analysis
- ECU Information

DSM (Display Screen Module)

- Basic Function
- DTC Analysis
- ECU Information

EMCM (Entertainment Multimedia Control Module)

- Basic Function
- DTC Analysis
- ECU Information

ETM (Entertainment Telematic Module)

- Basic Function
- DTC Analysis
- ECU Information

HVAC (Heat Vent A/C)

- Basic Function
- DTC Analysis
- ECU Information

ICS (Integrated Center Stack)

- Basic Function
- DTC Analysis
- ECU Information

LBSS (Left Blind Spot Sensor)

- Basic Function
- DTC Analysis
- ECU Information

PLGM (Power Liftgate)

- Basic Function
- DTC Analysis
- ECU Information

RBSS (Right Blind Spot Sensor)

- Basic Function
- DTC Analysis
- ECU Information

TTM (Trailer Tow Module)

- Basic Function
- DTC Analysis
- ECU Information

ABS (Anti Lock Brakes)

- Basic Function
- DTC Analysis
- Data Analysis
- Actuation Test
- ECU Information
- Special Function
- Brake Oil substitution / ABS brake system bleeding / Caliper substitution
- Brake Pads / Discs Substitution
- Check air presence in ABS unit
- Control unit reprogramming
- Electric Park Brake management
- EPB motor substitution
- Pressure Build Up
- Service Filling
- Volume Tightness Check On Wheel Side
- Calibrate Tandem Master Cylinder Sensor
- TPMS calibration Reset

ADCM (Active Damping Control Module)

- Basic Function
- DTC Analysis
- ECU Information

AFLS (Adaptive Front Lighting System)

- Basic Function
- DTC Analysis
- ECU Information

EPS (Electric Power Steering)

- Basic Function
- DTC Analysis
- Data Analysis

For more information, please email Sales@OEMtools.com, or call 877-263-4897

Actuation Test
 ECU Information
 - Special Function
 Reset Steering Angle Calibration
 Steering Angle Calibration
 Torque Sensor offset Calibration

ESL (Electronic Steering Lock)

- Basic Function
 DTC Analysis
 Data Analysis
 ECU Information

HALF (Haptical Lane Feedback)

- Basic Function
 DTC Analysis
 ECU Information
 - Special Function
 Service Single Pole Calibration

ORC (Occupant Restraint)

- Basic Function
 DTC Analysis
 Data Analysis
 ECU Information

PAM (Parking Aid Module)

- Basic Function
 DTC Analysis
 ECU Information

All model system function enhanced

- PCM (Powertrain Control Module)
- ABS (Anti Lock Brake System)
- ACC (Adaptive Cruise Control)
- ADCM (Adaptive Damper Control Module)
- AMP (Audio)
- BCM (Body Control Module)
- CCN (Instrument Cluster / Cabin Compartment Node)
- BCM (Body Control Module)
- DDM (Drivers Door Module)
- DTCM (Drive Train Control Module)
- EPS (Electric Power Steering)
- ESM (Electronic Shifter Module)
- FFCM (Front Facing Camera Module)
- HSM (Heated Seat Module)
- HVAC (Heat Vent A/C)
- ICS (Integrated Center Stack)
- IPC (Instrument Panel Cluster)
- ITM (Intrusion)
- LBSS (Left Blind Spot Sensor)
- MSMD (Memory Seat Module)
- ORC (Occupant Restraint Control)
- PDM (Passenger Door Module)
- PTS (Park Assist Module)

- RADIO (Radio)
- RBSS (Right Blind Spot Sensor)
- RFH (Radio Frequency Hub)
- SCCM (Steering Column Module)
- TCM (Transmission Control Module)
- TPM (Tire Pressure Monitor)
- SGW (Security Gateway)

Feedback

MEX: Proamster TCM Special function bug fixes
 KOR: Renegade PCM Special function added
 KOR: Renegade Autovin bug fixes
 KOR: Grand cherokee Service function enhanced
 USA: Wrangler PCM Sensor data bug fixes
 USA: Ram 1500 ABS Special function added
 USA: Ram 1500 Autovin bug fixes
 KOR: Renegade PCM Service function enhanced
 KOR: Grand cherokee PCM Sensor data enhanced
 USA: Pacifica PCM Sensor data enhanced
 USA: Pacifica LBSS Sensor data enhanced

[Back to Index](#)

HOLDEN

New system added

- V6 SIDI
- Basic function
 - DTC Analysis
 - DTC Erase Memory
 - Data Analysis
 - Actuation Test
 - ECU Information Display
 - Special function
 - Read PIN
 - Forced Read PIN
 - Program immobilizer function
 - ECM Reset
 - Fuel trim reset
 - Idle learn reset
 - Oil life reset

Function improvement and bug fixes

System comm. Stabilized

[Back to Index](#)

FORD AU

New model added

FOCUS 1.5L Dragon I3 DI TC Gas B 2019 ~

- PCM(Powertrain Control Module)
- ABS(Anti-Lock Brake System)
- ACM(Audio Front Control Module)
- APIM(SYNC Module)
- BCM(Body Control Module)
- CCM(Cruise Control Module)
- DDM(Driver Door Module)
- GSM(Gear Shift Module)
- GWM(Gateway Module A)
- HCM(Headlamp Control Module)
- HVAC(Heating Ventilation And Air Conditioning)
- IPC(Instrument Panel Cluster)
- IPM-A(Image Processing Module A)
- PAM(Parking Assist Control Module)
- PDM(Passenger Door Module)
- PSCM(Power Steering Control Module)
- RCM(Restraint Control Module)
- SCCM(Steering Column Control Module)
- SODL(Side Obstacle Detection Control Module LH)
- SODR(Side Obstacle Detection Control Module RH)
- WACM(Wireless Accessory Charging Module)

Topology model added

[Back to Index](#)

HYUNDAI/GENESIS/SEASALL

New model added

HYUNDAI USA

- GV70(JK1) 25
- GV70(JK1a) 25
- GV70 electrified(JK1 EV) 25
- GV70 electrified(JK1a EV) 25
- GV60(JW1 EV) 25
- G70(IK) 25
- G80 electrified(RG3 EV) 25
- G90(RS4) 25
- GV80(JX1) 25
- IONIQ 5N(NE EV N) 25
- TUCSON(NX4) 25
- TUCSON(NX4A) 25
- TUCSON hybrid(NX4 HEV) 25
- TUCSON PHEV(NX4 PHEV) 25
- KONA(SX2) 25
- VENUE(QX) 25
- TUCSON(NX4m) 25
- SANTA CRUZ(NX4A OB) 25

HYUNDAI General

- IONIQ 5N(NE EV N) 24~25

- CRETA(SU2i)/ALCAZAR(PS7i) 24
- CRETA(SU2i)/ALCAZAR(PS7i) 25
- GRANDEUR/AZERA(GN7) 25
- GRANDEUR/AZERA hybrid(GN7 HEV) 25
- HB20(BR2) 25
- i10(AC3) 25
- i20 N(BC3N) 25
- i20/BAYON(BC3) 25
- IONIQ 5(NEi EV) 25
- IONIQ 6(CE EV) 25
- KONA electric(OS EV) 24
- STARGAZER(KS) 25
- VENUE(QX) 25
- VENUE(QXI) 25
- CUSTO(KU) 24
- PALISADE(LX2) 25
- GV80(JX1) 24~25
- i30N(PDEN) 25
- i30(PDE) 25
- IONIQ 5(NE EV) 25

HYUNDAI Korea

- IONIQ 5N(NE EV N) 24~25
- TUCSON(NX4) 24~25
- TUCSON hybrid(NX4 HEV) 24~25
- KONA N(OSN) 24
- SONATA TAXI(DN8C) 24~25
- GV80(JX1) 24~25
- IONIQ 5(NE EV) 25

GENESIS USA

- GV70(JK1) 25
- GV70(JK1a) 25
- GV70 electrified(JK1 EV) 25
- GV70 electrified(JK1a EV) 25
- GV60(JW1 EV) 25
- G70(IK) 25
- G80 electrified(RG3 EV) 25
- G90(RS4) 25
- GV80(JX1) 25

GENESIS General

- GV80(JX1) 24~25

[Back to Index](#)

KIA

New model added

KIA USA

- Niro(SG2 EV) 25
- Niro(SG2 HEV) 25

- Niro(SG2 PHEV) 25
- RIO(SC) 24~25

KIA General

- K5(DL3C) 23~25
- Niro(SG2 EV) 25
- Niro(SG2 HEV) 25
- Niro(SG2 HEV) - For Mexico 24~25
- Niro(SG2 PHEV) 25
- EV6(CV) 24~25
- EV6(CV)-For Mexico 22~24
- K8 HEV(GL3 HEV) 24
- Telluride(ON) 25
- EV5(OV) 23~25
- PICANTO/MORNING(JA) 24~25
- STONIC(YB CUV) 25
- Niro Plus(DE EV PBV) 24~25
- Niro Plus(DE HEV PBV) 24~25
- Niro Plus(DE PHEV PBV) 24~25
- Ceed(CD) 25
- Ceed(CD) - ProCeed (Shooting Brake) 24~25
- Ceed(CD) - Sportswagon 24~25
- Ceed PHEV(CD PHEV) 24~25
- XCeed PHEV(CD CUV PHEV) 24~25
- XCeed(CD CUV) 25
- PEGAS/SOLUTO(AB) 25

KIA Korea

- Niro(SG2 EV) 25
- Niro(SG2 HEV) 25
- EV6(CV) 25
- MORNING(JA) 24~25
- Niro Plus(DE EV PBV) 25

[Back to Index](#)

SSANGYONG

New system added

ACTYON COUPE

SBWA(Shift by Wire Actuator)

- Basic Function
- DTC Analysis
- Data Analysis
- Actuation Test
- System Identification
- Special Function
- N Position Learning

SBW(Shift by Wire)

- Basic Function

- DTC Analysis
- Data Analysis
- System Identification

TORRES

SBWA(Shift by Wire Actuator)

- Basic Function
- DTC Analysis
- Data Analysis
- Actuation Test
- System Identification
- Special Function
- N Position Learning

SBW(Shift by Wire)

- Basic Function
- DTC Analysis
- Data Analysis
- System Identification

New function added

KORANDO C

ECM(Engine Control Module) – D20DTF

- Special Function
- Multi Calibration
- ECU Replace

[Back to Index](#)

MAHINDRA

New type and function added

SUPROMAXITRUCK_BS6

EMS

- Basic Function
- DTC Analysis
- Data Analysis
- Actuation Test
- ECU Information Display
- Special Function
- DPF Service Regeneration
- Write IQA Values
- DPF Reset
- Reset DEF Tank Level
- Write EVGT
- SCR AutoEOL Status
- Reset SCR First Filling Status
- Reset SCR Inducement - 50 Kms distance extension
- SCR NH3 Initialization Load Value
- SDPF Change
- Dosing Module / Supply Pump Change
- DPS Learning Reset



Zenith Distributor Bulletin

2025 Jan. Update Details

January 16, 2025

First Filling Test
Pressure Preparation Test
DEF Leak Detection Test
Dosing Valve Dry Actuation Test
DEF Metered Dosing Test
DEF Static Dosing Test
DEF Dynamic Dosing Test
DEF Dosing Module Spray Test
SCR Auto EOL Test
SCR AutoEOL Status (SM 5.3)
Reset SCR First Filling Status (SM 5.3)
Reset SCR Inducement - 50 Kms distance extension(5 times) (SM 5.3)
Reset SCR Inducement - 50 Kms distance extension (SM 5.3)
DNOX53 SCR First Filling Test
DNOX53 SCR Pressure Preparation Test
DNOX53 SCR Emptying Test
DNOX53 SCR Leak Detection Test
DNOX53 SCR Dosing Valve Dry Actuation Test
DNOX53 SCR Auto EOL Test

SCORPIO-N_BS6

EMS
- Basic Function
Actuation Test

MBFM
- Basic Function
Data Analysis

ESP
- Basic Function
Data Analysis

SRS
- Basic Function
Data Analysis
Actuation Test

DATC
- Basic Function
Data Analysis
Actuation Test

SILVER_BOX
- Basic Function
Data Analysis
Actuation Test

PKE
- Basic Function
Data Analysis
Actuation Test

EPS
- Basic Function
Data Analysis

ESCL
- Basic Function
Data Analysis

FVC
- Basic Function
Data Analysis

RVC
- Basic Function
Data Analysis

AMP
- Basic Function
Data Analysis

MGM
- Basic Function
Data Analysis

XUV700_BS6
EMS
- Basic Function
Data Analysis
Actuation Test
- Special Function
Injector 1
Injector 2
Injector 3
Injector 4
Ignition Coil 1
Ignition Coil 2
Ignition Coil 3
Ignition Coil 4
High Pressure Pump

MBFM
- Basic Function
Data Analysis
Actuation Test

ABS
- Basic Function
Data Analysis

SRS
- Basic Function
Data Analysis
Actuation Test

IMMO

For more information, please email Sales@OEMtools.com, or call 877-263-4897

- Basic Function
Data Analysis

PKE
- Basic Function
Data Analysis
Actuation Test

EPS
- Basic Function
Data Analysis

ESCL
- Basic Function
Data Analysis

TCU
- Basic Function
Data Analysis
Actuation Test

XUV500_BS6
EMS
- Basic Function
Actuation Test

THAR_BS6
EMS
- Basic Function
Actuation Test

SCORPIO_BS6
EMS
- Basic Function
Actuation Test

BOLEROPOWERPLUSE_BS6
EMS
- Basic Function
Actuation Test

BOLEROPIKUP_BS6
EMS
- Basic Function
Actuation Test

JEETO_BS6
EMS
- Basic Function
Actuation Test

MARAZZO_BS6
EMS
- Basic Function
Actuation Test

SUPRO_BS6

EMS
- Basic Function
Actuation Test

Bolero Pickup BS6 : India

EMS
- Special Function
IMV Test
Injector 1 Shut Off Test
Injector 2 Shut Off Test
Injector 3 Shut Off Test
Injector 4 Shut Off Test
Power Balance Test
RPC Priming by RVD Test
Injector 1 Buzz Test
Injector 2 Buzz Test
Injector 3 Buzz Test
Injector 4 Buzz Test
Hydraulic Test
Compression Test
Fan 1 Actuator Test
Fan 2 Actuator Test
IMV Buzz Test
eVGT Valve Test
AC Compressor Relay Test
Glow Plug Relay Test
Fuel Lift Pump Test
Throttle Valve Actuator Test
EGR Test
Stop and Start Feature Test
Rail Pressure Test
Reset Service - Injectors Replacement
Reset Service - CAM Crank Replacement
Reset Service - EGR Replacement
Reset Service - Throttle Replacement
Reset Service - eVGT Replacement
Reset Service - Lambda Sensor Replacement
Reset Service - Rail Pressure Sensor Replacement
Variable Oil Pump Actuator Valve Test
Piston Cooling Jet Test
Static injector learning process – SPCS
Reset CDPF Values - Filter EATS
Reset CDPF Values - DP Sensor EATS
Reset CDPF Values - DTC EATS

XUV300_BS6 : India

EMS
- Special Function
IMV Test
Injector 1 Shut Off Test
Injector 2 Shut Off Test
Injector 3 Shut Off Test
Injector 4 Shut Off Test

Power Balance Test
 RPC Priming by RVD Test
 Injector 1 Buzz Test
 Injector 2 Buzz Test
 Injector 3 Buzz Test
 Injector 4 Buzz Test
 Hydraulic Test
 Compression Test
 Fan 1 Actuator Test
 Fan 2 Actuator Test
 IMV Buzz Test
 eVGT Valve Test
 AC Compressor Relay Test
 Glow Plug Relay Test
 Fuel Lift Pump Test
 Throttle Valve Actuator Test
 EGR Test
 Stop and Start Feature Test
 Rail Pressure Test
 Reset Service - Injectors Replacement
 Reset Service - CAM Crank Replacement
 Reset Service - EGR Replacement
 Reset Service - Throttle Replacement
 Reset Service - eVGT Replacement
 Reset Service - Lambda Sensor Replacement
 Reset Service - Rail Pressure Sensor Replacement
 Variable Oil Pump Actuator Valve Test
 Piston Cooling Jet Test
 Static injector learning process – SPCS
 Reset CDPF Values - Filter EATS
 Reset CDPF Values - DP Sensor EATS
 Reset CDPF Values - DTC EATS

EMS
 - Basic Function
 Data Analysis

THAR_BS6

EMS
 - Basic Function
 Data Analysis

SCORPIO_BS6

EMS
 - Basic Function
 Data Analysis

BOLEROPOWERPLUS_BS6

EMS
 - Basic Function
 Data Analysis

BOLEROPIKUP_BS6

EMS
 - Basic Function
 Data Analysis

JEETO_BS6

EMS
 - Basic Function
 Data Analysis

MARAZZO_BS6

EMS
 - Basic Function
 Data Analysis

SUPRO_BS6

EMS
 - Basic Function
 Data Analysis

Bolero Pickup BS6,...etc : India

EMS
 - Special Function
 Write IQA Value

Boleropick-up CNG

EMS
 - Basic Function
 DTC Analysis
 Data Analysis
 ECU Information Display
 - Special Function
 Write VIN
 Write Engine Serial Number

Function improvement and bug fixes

SCORPIO-N_BS6

EMS
 - Basic Function
 Data Analysis

XUV700_BS6

EMS
 - Basic Function
 Data Analysis

XUV500_BS6

[Back to Index](#)



New type added

Ashok Leyland AVTR Denso (BS6)
 - Basic Function
 DTC Analysis



Zenith Distributor Bulletin

2025 Jan. Update Details

January 16, 2025

- Data Analysis
- ECU Information Display
- Ashok Leyland BOSS LX DELPHI (BS6)
 - Basic Function
 - DTC Analysis
 - Data Analysis
 - ECU Information Display
- FORCE TRAX DELPHI(BS6)
 - Basic Function
 - DTC Analysis
 - Data Analysis
 - Actuation Test
 - ECU Information Display
 - Special Function
 - VIN (Vehicle Identification Number)
 - Injector coding
- FORCE MONOBUS BOSCH MD1(BS6)
 - Basic Function
 - DTC Analysis
 - Data Analysis
 - Actuation Test
 - ECU Information Display
 - Special Function
 - VIN (Vehicle Identification Number)
 - Injector coding
 - Starting Torque
 - Engine Demand Adaptation Value
 - Low Idle Set Point
 - PRV Open Count
 - PRV-Time Open
 - EGR Valve-Learning
 - Throttle Valve-Learning
 - Engine ON Time
 - ASMod:Nox-and Sot-Distance travelled by Vehicle
 - Low Idle RPM Adjustment
 - Fuel Consumption Over life Time
 - Accumulated Fuel Consumption
 - Fuel Consumption Over Life Time having Higher Resolution
 - Bit Coded Message for Tank Level
 - Fuel Consumption Read from the EEPROM During Initialisation
 - Global Data for Total Distance(Oddometer)
 - ECU Operating ON Time
 - SCR: Test Result Counter
 - SCR-DNOx: Status of First Filling Collected Information
 - SCR-DNOx: Routine to Set the Tank-Level
 - SCR-DNOx: Governor Deviation between Nominal Pressure and Currently Modelled System Pressure
 - SCR-DNOx: Set and Reset the EOL Service Informations
 - SCR-DNOx: Offset Resetting Factor
- SCR-DNOx: Reset the Time Overtemperature
- SCR-DNOx: The Number of Replacement Functions of Pressure Reduction
- SCR-DNOx: The Long Term Dosing Quantity
- SCR-The Long Term Adaption Factor
- Airbag-Crash Input
- TrbCh_stMonVdSens
- SCRFBC_facNG3corrEEP
- SCRFBC_facNOxCorr
- SCRFBC_facNOxCtalEEP2S16
- SCRFBC_IDetReFill
- SCRFBC_mEstNG3LdMaxAVS
- FORCE SCHOLAR BOSCH EDC17C53(BS4)
 - Basic Function
 - DTC Analysis
 - Data Analysis
 - Actuation Test
 - ECU Information Display
 - Special Function
 - VIN (Vehicle Identification Number)
 - Injector coding
 - Starting Torque
 - Torque Limitation
 - Air Flow mass
 - Low IDLE Speed
- FORCE SMOOTH BOSCH MD1(BS6)
 - Basic Function
 - DTC Analysis
 - Data Analysis
 - Actuation Test
 - ECU Information Display
 - Special Function
 - VIN (Vehicle Identification Number)
 - Injector coding
 - Starting Torque
 - Engine Demand Adaptation Value
 - Low Idle Set Point
 - PRV Open Count
 - PRV-Time Open
 - EGR Valve-Learning
 - Throttle Valve-Learning
 - Engine ON Time
 - ASMod:Nox-and Sot-Distance travelled by Vehicle
 - Low Idle RPM Adjustment
 - Fuel Consumption Over life Time
 - Accumulated Fuel Consumption
 - Fuel Consumption Over Life Time having Higher Resolution
 - Bit Coded Message for Tank Level
 - Fuel Consumption Read from the EEPROM During Initialisation
 - Global Data for Total Distance(Oddometer)
 - ECU Operating ON Time

For more information, please email Sales@OEMtools.com, or call 877-263-4897



Zenith Distributor Bulletin

2025 Jan. Update Details

January 16, 2025

- SCR: Test Result Counter
- SCR-DNOx: Status of First Filling Collected Information
- SCR-DNOx: Routine to Set the Tank-Level
- SCR-DNOx: Governor Deviation between Nominal Pressure and Currently Modelled System Pressure
- SCR-DNOx: Set and Reset the EOL Service Informations
- SCR-DNOx: Offset Resetting Factor
- SCR-DNOx: Reset the Time Overtemperature
- SCR-DNOx: The Number of Replacement Functions of Pressure Reduction
- SCR-DNOx: The Long Term Dosing Quantity
- SCR-The Long Term Adaption Factor
- Airbag-Crash Input
- TrbCh_stMonVdSens
- SCRFBFC_facNG3corrEEP
- SCRFBFC_facNOxCorr
- SCRFBFC_facNOxCtalIEEP2S16
- SCRFBFC_IDetReFill
- SCRFBFC_mEstNG3LdMaxAVS

- TATA CV Ultra BS6 LCV 3.3-12V Engine
 - Basic Function
 - DTC Analysis
 - Data Analysis
 - Actuation Test
 - ECU Information Display
 - Special Function
 - VIN
 - Injector Coding
 - High pressure test
 - Leak test of SCR system
 - Dosing Quantity Test from tester
 - Emptying Test
 - Pressure Preparation Test
 - Dynamic Dosing Quantity Test from Calibration
 - Static Dosing Quantity Test from Calibration
 - Medium mass flow and dosing quantity test
 - Spray Test
 - First Filling
 - Backflow Pump Test
 - Dosing valve dry actuation
 - EOL command combining first filling, pressure preparation and emptying test
 - Idle Regeneration
 - Injector Valve Adjustment raw values for all injectors
 - Wear out opening counter of PRV implemented using AVS
 - Wear out timer of PRV open time implemented using AVS
 - EEP MEUNADAPT CRV DATA
 - UDC DosQnt
 - AVS routine to set and reset the EOL service informations
 - AVS routine for resetting the Offset Factor
- AVS routine for governor deviation between nominal pressure and currently modelled system pressure (DnoxSA pDifSysNom)
- AVS routine to read and write the collected system information
- AVS routine to set the Tank-level
- AVS routine to read and write the number of replacement functions of pressure reduction (SCR Mon nrPRednRepl)
- Noncontinuous soot mass
- Continuous soot mass
- Max thresholds for covered distance since last successful regeneration
- Engine operation time thresholds for regeneration

- TATA CV Ultra BS6 LCV 3.3-12V VECU
 - Basic Function
 - DTC Analysis
 - Data Analysis
 - Actuation Test
 - ECU Information Display
 - Special Function
 - VIN
 - Vehicle Configuration Number

- TATA CV Ultra BS6 LCV 3.3-12V IC
 - Basic Function
 - DTC Analysis
 - Data Analysis
 - ECU Information Display
 - Special Function
 - VIN
 - Date of last programming
 - Hour Meter write
 - Reset Service Reminder Service

- TATA CV Ultra BS6 1918 HCV DCM7.24 Engine
 - Basic Function
 - DTC Analysis
 - Data Analysis
 - Actuation Test
 - ECU Information Display
 - Special Function
 - VIN
 - Vehicle Configuration Number
 - Engine Data Reset
 - Injector Backleak Test
 - IMV Test
 - Cylinder 1 Shut Off Test
 - Cylinder 2 Shut Off Test
 - Cylinder 3 Shut Off Test
 - Cylinder 4 Shut Off Test
 - Reset PFM Sensor Learning
 - Compression Leak Test
 - IMV Buzzing Test

For more information, please email Sales@OEMtools.com, or call 877-263-4897

HPV Valve Test
 ETV Learning Test
 EGR Learning Test
 Reset Injectors Values Test
 Reset IMV Values Test
 Reset HP Pump Values Test
 Reset APS Values Test
 Reset Starter Active Counter Test
 Turbocharger Learning Test
 Reset EGR Learning
 Reset Turbocharger Learning
 Reset ETV Learning
 Service Regeneration at IDLE
 Cylinder 1 Buzz Test
 Cylinder 2 Buzz Test
 Cylinder 3 Buzz Test
 Cylinder 4 Buzz Test

Idle Speed Adjustment Value
 Exhaust Gas Recirculation (EGR) Adjustment Value -
 Newly Learned Values (Open Position)
 Exhaust Gas Recirculation (EGR) Adjustment Value -
 Newly Learned Values (Close Position)
 Exhaust Gas Recirculation (EGR) Adjustment Value -
 Previously Learned Values (Open Position)
 Exhaust Gas Recirculation (EGR) Adjustment Value -
 Previously Learned Values (Close Position)
 Pressure Regulating Valve (PRV) Counter
 Pressure Regulating Valve (PRV) Timer

[Back to Index](#)

TATA

TATA CV Ultra BS6 1918 HCV DCM7.24 IC

- Basic Function
 Data Analysis
 ECU Information Display
 - Special Function
 Date of last programming
 VIN
 Hour Meter write
 Reset Service Reminder Service

TATA CV Ultra BS6 1918 HCV DCM7.24 TCU

- Basic Function
 DTC Analysis
 Data Analysis
 Actuation Test
 ECU Information Display
 - Special Function
 VIN
 Vehicle Configuration Number
 SCR - Pressure Preparation Test
 SCR - Dosing Quantity Test 60g/55ml
 SCR - Emptying Test
 SCR - Leak detection Test
 SCR - Average Dosing Quantity Test 110g/100ml
 SCR - Spray Test
 HCI - Dosing Test
 HCI - System Test

TATA 1512 CR-X BS4 12V 4cyl Engine

- Basic Function
 DTC Analysis
 Data Analysis
 Actuation Test
 ECU Information Display
 - Special Function
 VIN
 Injector Coding

New type added

TIGOR PETROL Automatic Transmission

- Basic Function
 DTC Analysis
 Data Analysis
 Actuation Test
 ECU Information Display
 - Special Function
 Vehicle Identification Number
 Clutch Circuit Bleeding
 Hydraulic Circuit Depressurization
 Clutch kiss point self tuning
 Grid self tuning
 Reset Data - after Clutch components replacement
 Reset Data - after AMT KIT replacement
 Reset Data - after Gearbox replacement
 Reset Data - after shift lever replacement
 Reset Data - after sports button replacement

TIAGO PETROL Fully Automatic Temperature Control System

- Basic Function
 DTC Analysis
 Data Analysis
 Actuation Test
 ECU Information Display
 - Special Function
 Vehicle Identification Number
 Service Self Test
 CCH CCM Read ECU Parameter Routine
 Actuator Motor Calibration

TIAGO PETROL Head Unit Control System

- Basic Function
 DTC Analysis
 Data Analysis

Set All Gauges to Minimum
 Set All Warning Lamps On
 Service Reminder Reset
 Auto-learn other ECUs present in vehicle
 Odometer Reset
 Clock Setting
 IC Configuration Parameter -2 (Type Size / Market Type / Drive Type)
 Configure Fuel Tank Size
 Season Odometer
 Configure Engine Type
 Out Side Ambient Temperature Sensor Presence
 ECO / SPORT / CITY Warning Indicator

AT (AT System) - 7DCT-300S - UMC Electronic Control Type
 - Basic Function
 DTC Analysis
 Data Analysis
 ECU Information Display

ESP (Electronic Stability Program)
 - Basic Function
 DTC Analysis
 Data Analysis
 Actuation Test
 ECU Information Display

- Special Function
 Enter Service Mode
 Exit Service Mode
 Calipers Calibration
 Clamp Calipers
 Release Calipers
 Left Caliper Clamped
 Right Caliper Clamped
 Left Caliper Released
 Right Caliper Released
 Caliper Clamped to Specified Clamping Force
 Stepper Calipers
 Left Caliper Clamped to Specified Clamping Force
 Right Caliper Clamped to Specified Clamping Force
 Stepper Left Caliper
 Stepper Right Caliper
 Left Caliper Count Reset
 Right Caliper Count Reset
 Calipers Restored to Factory Default Settings

PUNCH Instrument Panel Cluster System

- Special Function
 Set All Gauges to Maximum
 Set All Gauges to Minimum
 Set All Warning Lamps On
 Service Reminder Reset
 Auto-learn other ECUs present in vehicle
 Odometer Reset
 Vehicle Identification Number
 IC Configuration Parameters -2 (Tyre Size/Market Type/Drive Type)
 Out Side Ambient Temperature Sensor Presence
 AFE (Avg Fuel Economy) biasing
 Configure Engine Type
 Season Odometer

Function improvement and bug fixes

NEXON BS4 ENGINE Injector Coding bug fixes

[Back to Index](#)

SRS (Airbag Module)
 - Basic Function
 DTC Analysis
 Data Analysis
 ECU Information Display

ICM / IP (Instrument Cluster System)
 - Basic Function
 DTC Analysis
 Data Analysis
 Actuation Test
 ECU Information Display

A/C (Automatic Air Conditioning System) - Behr Hella Type
 - Basic Function
 DTC Analysis
 Data Analysis
 Actuation Test
 ECU Information Display

New model added

HAVAL

HAVAL Cool Dog 2023 (Fuel Edition)

ECM (Engine Control Module)

- Basic Function
 DTC Analysis
 Data Analysis
 Actuation Test
 ECU Information Display

AT (AT System) - 7DCT-300S - Continent Control Type

- Basic Function
 DTC Analysis
 Data Analysis
 ECU Information Display

For more information, please email Sales@OEMtools.com, or call 877-263-4897

GREATWALL

ESP (Electronic Stability Program)

- Basic Function
- DTC Analysis
- Data Analysis
- Actuation Test
- ECU Information Display
- Special Function
- Enter Service Mode
- Exit Service Mode
- Calipers Calibration
- Clamp Calipers
- Release Calipers
- Left Caliper Clamped
- Right Caliper Clamped
- Left Caliper Released
- Right Caliper Released
- Caliper Clamped to Specified Clamping Force
- Stepper Calipers
- Left Caliper Clamped to Specified Clamping Force
- Right Caliper Clamped to Specified Clamping Force
- Stepper Left Caliper
- Stepper Right Caliper
- Left Caliper Count Reset
- Right Caliper Count Reset
- Calipers Restored to Factory Default Settings

[Back to Index](#)

MAXUS/LDV

New system added

- G10**
 Engine Management System (EMS)
- Basic Function
 - DTC Analysis
 - Data Analysis
 - Actuation Test
 - ECU Information Display

Instrument Cluster (IC)

- Basic Function
- DTC Analysis
- Data Analysis
- Actuation Test
- ECU Information Display
- Special Function
- Write maintenance mileage
- Perform Service Interval Display (SID) service lamp reset

D90

Instrument Cluster (IC)

- Basic Function
- DTC Analysis
- Data Analysis
- Actuation Test
- ECU Information Display
- Special Function
- Write maintenance mileage
- Perform Service Interval Display (SID) service lamp reset

[Back to Index](#)

MG

MG Topology error modified

New function added

MG HS (AS23 UK)

- EPS
- Special Function
 - Front Detective Radar Calibration

DTC item added

MG HS PHEV (AS23P)

- CS/ABS
- FVCM

eMG 5 EV (EP22)

- CS/ABS

MG 5 HS (AS23 TT)

- TCM
- ECM

MG ZS (ZS11)

- TCM
- T-BOX

MG ZS (ZS11 MCE TT)

- BCM

eMG 5, MG 5 (AP31)

- ECM
- FICM

eMG 6 PHEV (IP32P CN6)

- ECM

MG 6 (IP31)

- ECM

MG eZS, MG ZS (EU)

For more information, please email Sales@OEMtools.com, or call 877-263-4897

- FICM

MG eZS, MG ZS(EU)

- FICM

MG eRX5, MG eRX5(AS24)

- FICM

MG ZS(ZS11 MCE TT)

- T-BOX

[Back to Index](#)

BYD

New model added

Dolphin 2023

APS ((Valeo) Accelerator pedal suppression controller)

- Basic Function
- DTC Analysis
- Actuation Test
- ECU Information Display

BASU ((BYD) battery execution and sampling unit)

- Basic Function
- DTC Analysis
- Data Analysis
- Battery Data Analysis
- Actuation Test
- ECU Information Display
- Special Function
- One-click battery cooling active test
- One-button battery heating active test ended

BCMA_B2 ((BYD) rear body domain controller A_B1)

- Basic Function
- DTC Analysis
- Data Analysis
- Actuation Test
- ECU Information Display

BSC ((BYD) safety system)

- Basic Function
- DTC Analysis
- Data Analysis
- ECU Information Display
- Special Function
- Wheel bleeding

CEPS1 ((Nexteer) Power steering)

- Basic Function
- DTC Analysis
- Data Analysis

- ECU Information Display
- Special Function
- Steering angle zero calibration

CEPS2 ((Tianhe) Power steering)

- Basic Function
- DTC Analysis
- Data Analysis
- Actuation Test
- ECU Information Display
- Special Function
- Steering wheel zero calibration

FMCU (Front drive motor control unit)

- Basic Function
- DTC Analysis
- Data Analysis
- ECU Information Display
- Special Function
- Motor zero calibration

IPB ((Bosch) Power hydraulic brake)

- Basic Function
- DTC Analysis
- Data Analysis
- Actuation Test
- ECU Information Display

BCMA_L1 ((BYD) Left body domain controller A_L1Pro)

- Basic Function
- DTC Analysis
- Data Analysis
- Actuation Test
- ECU Information Display
- Special Function
- Write the Vehicle Identification Number (VIN)
- Brake System Shield/Not Shield
- Check System Shield/Not Shield
- Device Check System Shield/Not Shield
- Driving Assist System Shield/Not Shield
- Engine System Shield/Not Shield
- Indicator Lamp Shield/Not Shield
- Key System Shield/Not Shield
- Oil System Shield/Not Shield
- Power System Shield/Not Shield
- Repair Check System Shield/Not Shield
- Select Language
- Select unit initial value
- Text Information Shield/not Shield
- Tire System Shield/Not Shield
- Transmission System Shield/Not Shield

PDC ((BYD) Power domain controller)

- Basic Function
- DTC Analysis

- Basic Function
DTC Analysis
Data Analysis
Actuation Test
ECU Information Display
- BLE ((BYD) Bluetooth module)
 - Basic Function
 - Data Analysis
 - ECU Information Display
- HFRM ((BYD) high frequency receiver module)
 - Basic Function
 - DTC Analysis
 - ECU Information Display
- HFRM_315 ((BYD) high frequency receiver module_315 frequency)
 - Basic Function
 - DTC Analysis
 - ECU Information Display
- INS1 ((BYD) Instrument Cluster _MCU)
 - Basic Function
 - DTC Analysis
 - ECU Information Display
- INS2 ((BYD) Instrument Cluster _SOC)
 - Basic Function
 - ECU Information Display
- Media ((BYD) Multimedia system_Android)
 - Basic Function
 - DTC Analysis
 - ECU Information Display
- SEC ((BYD) smart access controller)
 - Basic Function
 - DTC Analysis
 - ECU Information Display
- ACC ((BYD) Air conditioning compressor)
 - Basic Function
 - DTC Analysis
 - Data Analysis
 - ECU Information Display
- BASU ((BYD) battery execution and sampling unit)
 - Basic Function
 - DTC Analysis
 - Data Analysis
 - Battery Data Analysis
 - Actuation Test
 - ECU Information Display
 - Special Function
- One-click battery cooling active test
- One-button battery heating active test ended
- EVCC1 ((BYD) communication converter)
 - Basic Function
 - DTC Analysis
 - Data Analysis
 - ECU Information Display
- EVCC2 ((RNL) communication converter)
 - Basic Function
 - DTC Analysis
 - Data Analysis
 - ECU Information Display
- TPMS ((Sensata) tire pressure management module)
 - Basic Function
 - DTC Analysis
 - Data Analysis
 - ECU Information Display

Topology added

Applicable Model

- Dolphin 2023
- SEAL 2023
- ATTO3

**BMS(Battery Management Systems) function added
Dolphin 2023**

- BASU ((BYD) battery execution and sampling unit)
- Battery Data Analysis

SEAL 2023

- BASU ((BYD) battery execution and sampling unit)
- Battery Data Analysis

ATTO3

- BASU ((BYD) battery execution and sampling unit)
- Battery Data Analysis

Battery Data Analysis

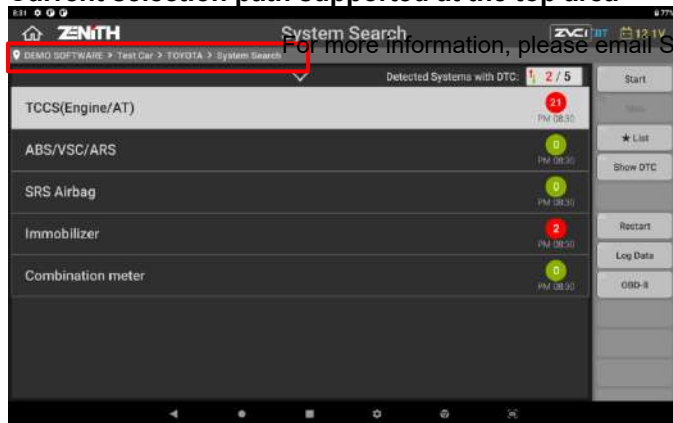
[Back to Index](#)

ETC

WWH-OBD protocol supported in OBD Mode

ZMA-101 update supported in ZENITH Z7 Lite's Settings

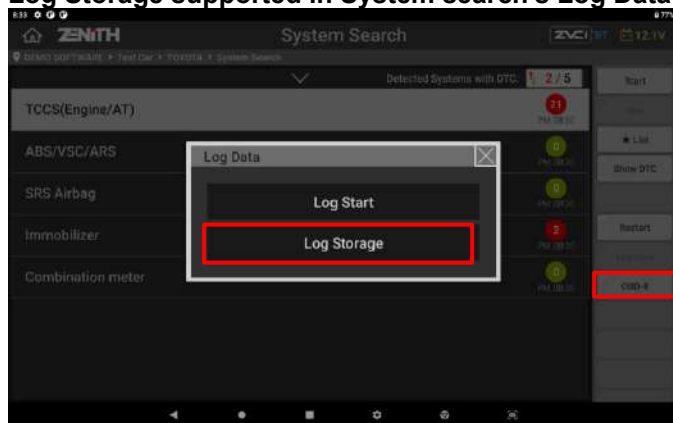
Current selection path supported at the top area



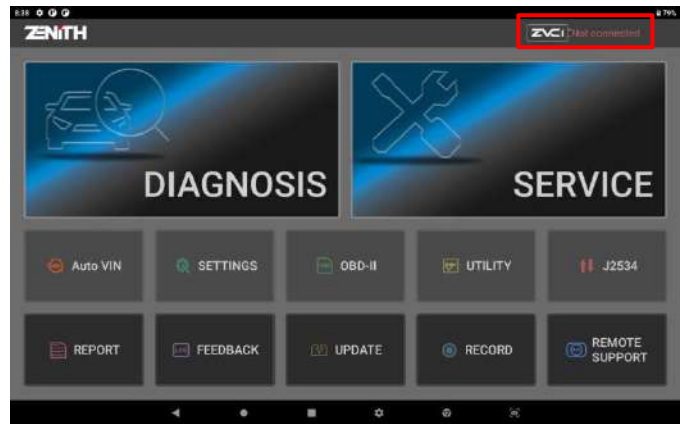
For more information, please email Sales@OEMtools.com

OBd-II supported in System search

Log Storage supported in System search's Log Data

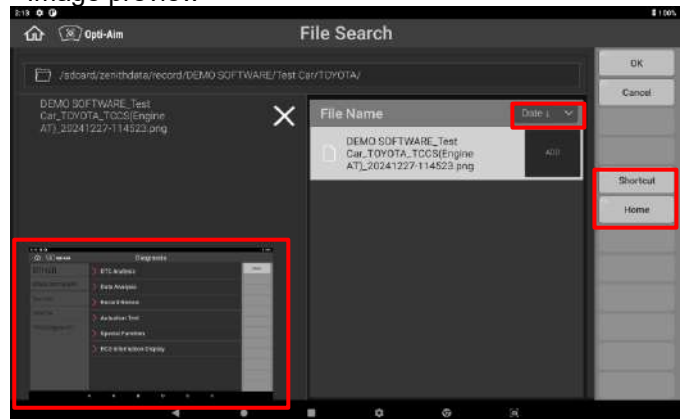


"Not connected" display when ZVCI not connected



New functions supported in Log storage's File Search

- File sorting
- Shortcut and Home
- Image preview



[Back to Index](#)